



Chipsmall Limited consists of a professional team with an average of over 10 year of expertise in the distribution of electronic components. Based in Hongkong, we have already established firm and mutual-benefit business relationships with customers from,Europe,America and south Asia,supplying obsolete and hard-to-find components to meet their specific needs.

With the principle of “Quality Parts,Customers Priority,Honest Operation,and Considerate Service”,our business mainly focus on the distribution of electronic components. Line cards we deal with include Microchip,ALPS,ROHM,Xilinx,Pulse,ON,Everlight and Freescale. Main products comprise IC,Modules,Potentiometer,IC Socket,Relay,Connector.Our parts cover such applications as commercial,industrial, and automotives areas.

We are looking forward to setting up business relationship with you and hope to provide you with the best service and solution. Let us make a better world for our industry!



## Contact us

Tel: +86-755-8981 8866 Fax: +86-755-8427 6832

Email & Skype: info@chipsmall.com Web: www.chipsmall.com


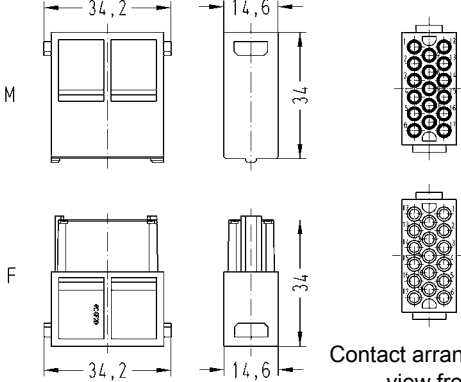
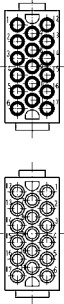

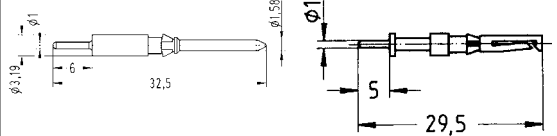
Address: A1208, Overseas Decoration Building, #122 Zhenhua RD., Futian, Shenzhen, China


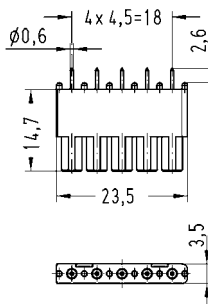


# PCB Adapter for Han® DDD module



## 5 pin PCB adapter

Identification	Part number		Drawing	Dimensions in mm
	Male insert (M)	Female insert (F)		
<b>Han® DDD module</b> PCB termination/ crimp termination Order crimp contacts separately 	09 14 017 3001	09 14 017 3101		 Contact arrangement view from termination side
<b>Han D® double contacts</b> to connect PCB adapter only for Han® DDD male module 	09 15 000 6197	09 15 000 6291		

Identification	PCB thickness	Part number	Drawing	Dimensions in mm
<b>PCB adapter 5 pins*</b> 	1.6 mm	09 16 000 9915		

\* For a 17 pin PCB termination with the Han® DDD module two 6 pin and one 5 pin PCB adapters are necessary.

## Features

- Modular construction
- Robust design
- Suitable for standard Han® and EMC hoods and housings
- Low wiring costs

For further information and Han-Modular® frames please refer to chapter 06 (Han-Modular®) in the main catalogue Industrial Connectors Han®

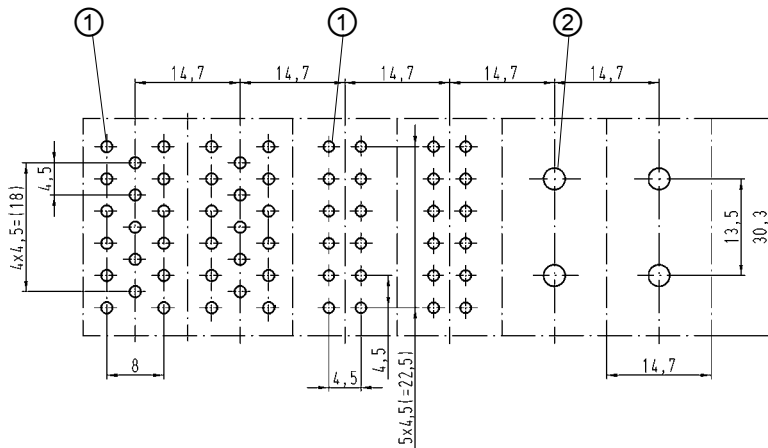
## Technical characteristics

Han® DDD module with PCB adapter

Electrical data	
acc. to DIN EN 61 984	<b>7.5 A 160 V 2.5 kV 3</b>
Rated current	7.5 A
Rated voltage	160 V
Rated impulse voltage	2.5 kV
Pollution degree	3
Wire gauge	0.14 ... 2.5 mm <sup>2</sup>

## Layout of PCB

Dimensions in mm

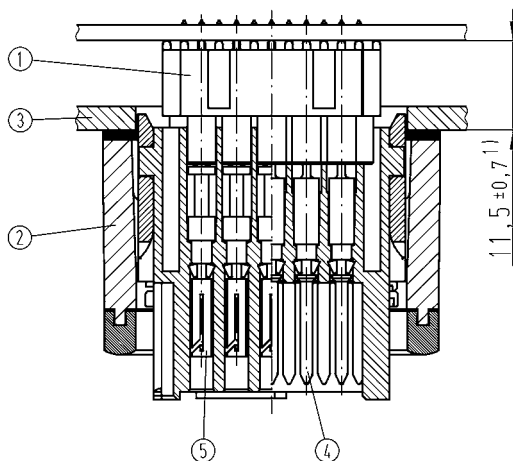


Han® DDD module   Han® DD module   Han® 70 A module

- ① Recommended hole diameter: 0.8 mm
- ② Recommended hole diameter: 3.2 mm

## Assembly situation

Dimensions in mm



- ① Han DDD® PCB adapter 5 pins
- ② Han® B bulkhead mounted housing
- ③ Switch board panel
- ④ Han D® double male contact, 09 15 000 6197
- ⑤ Han D® double female contact, 09 15 000 6291

<sup>1)</sup> for Han® B EMV hood and housing spacing of 12.5 ± 0.7 mm is necessary as no flange seal is used.