



Chipsmall Limited consists of a professional team with an average of over 10 year of expertise in the distribution of electronic components. Based in Hongkong, we have already established firm and mutual-benefit business relationships with customers from,Europe,America and south Asia,supplying obsolete and hard-to-find components to meet their specific needs.

With the principle of “Quality Parts,Customers Priority,Honest Operation,and Considerate Service”,our business mainly focus on the distribution of electronic components. Line cards we deal with include Microchip,ALPS,ROHM,Xilinx,Pulse,ON,Everlight and Freescale. Main products comprise IC,Modules,Potentiometer,IC Socket,Relay,Connector.Our parts cover such applications as commercial,industrial, and automotives areas.

We are looking forward to setting up business relationship with you and hope to provide you with the best service and solution. Let us make a better world for our industry!



## Contact us

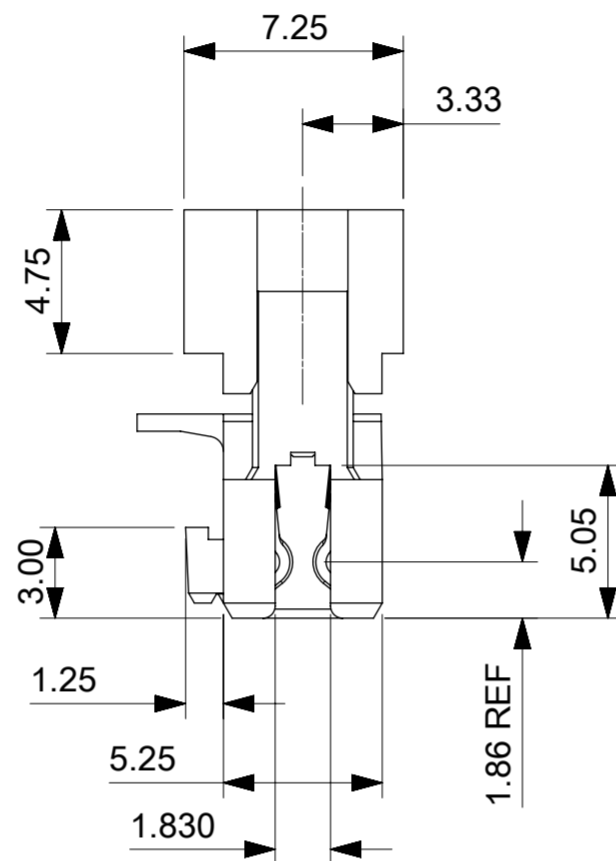
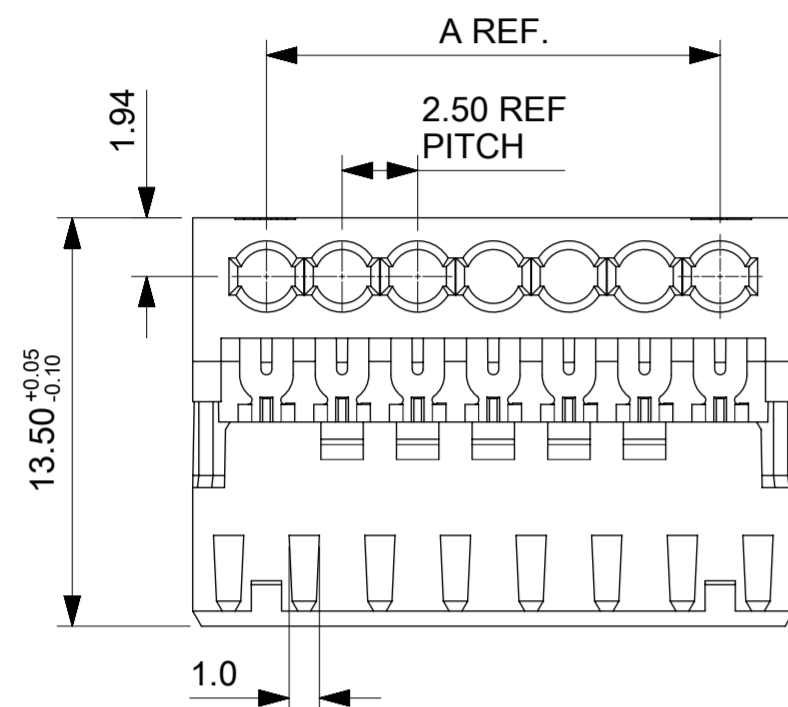
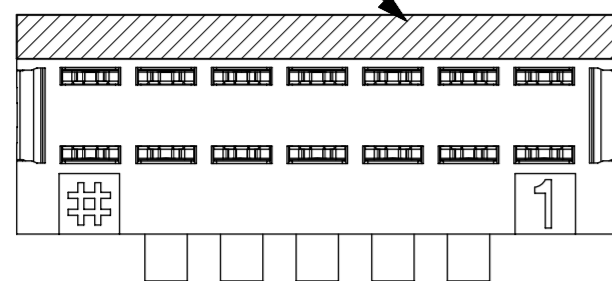
Tel: +86-755-8981 8866 Fax: +86-755-8427 6832

Email & Skype: info@chipsmall.com Web: www.chipsmall.com

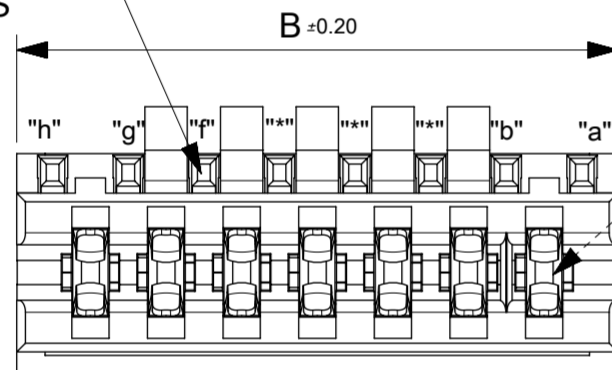
Address: A1208, Overseas Decoration Building, #122 Zhenhua RD., Futian, Shenzhen, China



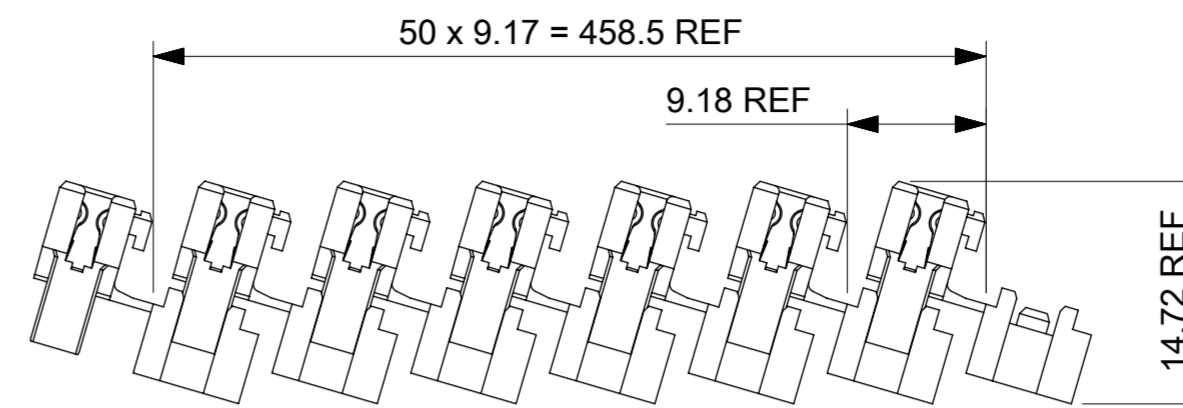
POSITION OF COLOUR STRIPE (see note 3)



POSITION KEYS



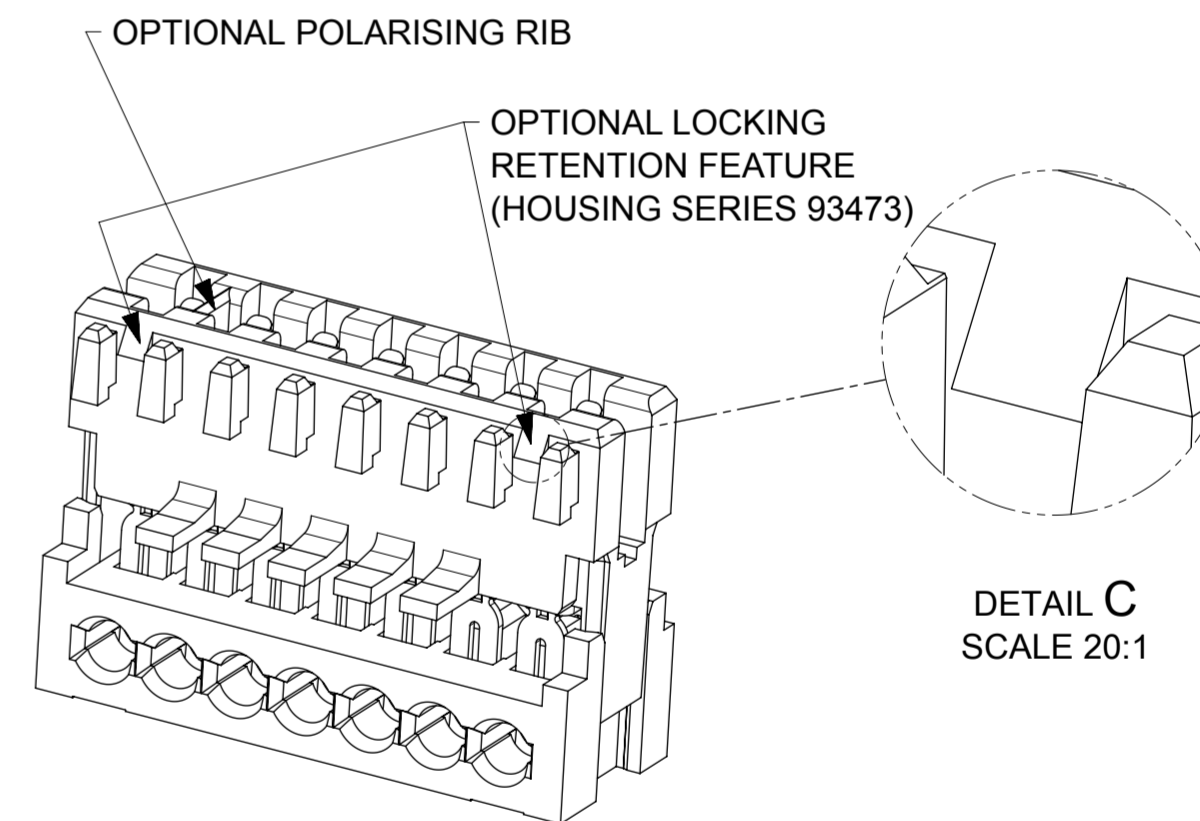
CIRCUIT 1



SHIPPING ARRANGEMENT

CCT	A	B
3	5.0	9.875
4	7.5	12.375
5	10.0	14.875
6	12.5	17.375
7	15.0	19.875
8	17.5	22.375
9	20.0	24.875
10	22.5	27.375
11	25.0	29.875
12	27.5	32.375
13	30.0	34.875
14	32.5	37.375
15	35.0	39.875
16	37.5	42.375
17	40.0	44.875
18	42.5	47.375
19	45.0	49.875
20	47.5	52.375

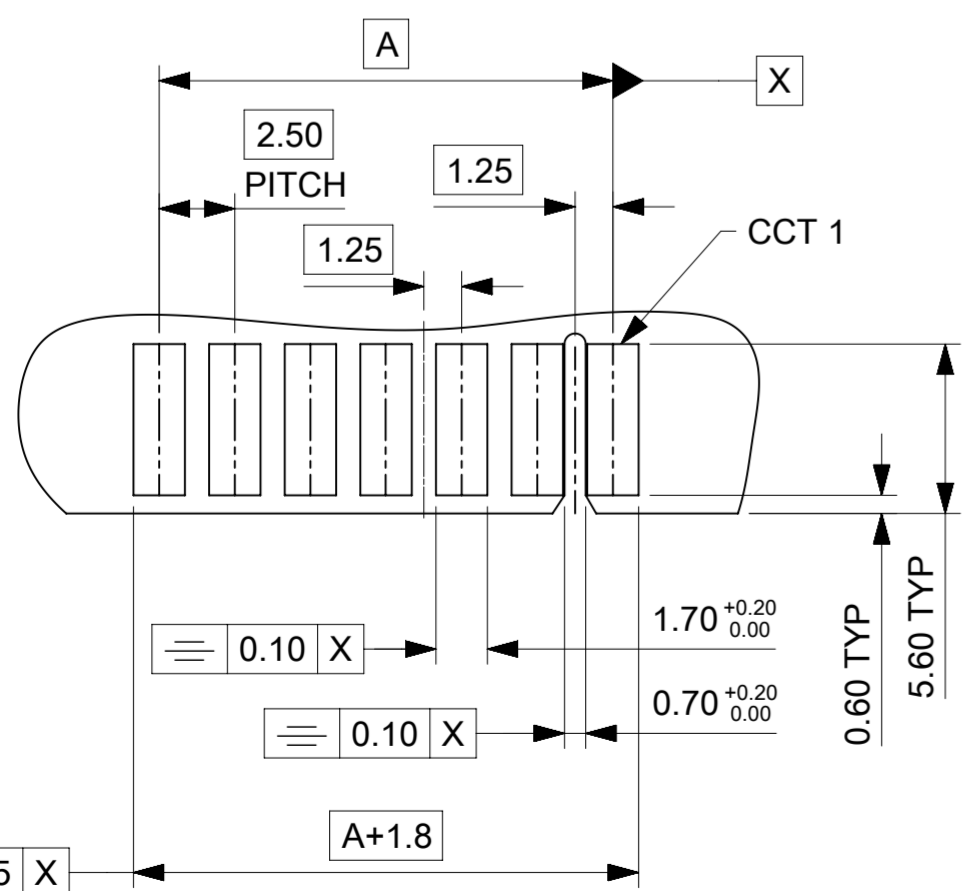
OPTIONAL PART FEATURES



SEE SUBSEQUENT SHEETS FOR RELEVANT PART NUMBERS.  
 \*LOCKING RETENTION FEATURE AVAILABLE FIRST AND LAST CIRCUIT ONLY  
 SMALLEST CIRCUIT SIZE AVAILABLE WITH LOCKING RETENTION FEATURE IS 5 CKT

NOTES:

1. REFER TO PRODUCT SPECIFICATION: PS-99020-0040.
2. MATERIAL: HOUSING - NYLON PA6 UL94-VO, COLOUR: NATURAL (WHITE).  
 TERMINAL: PHOSPHOR BRONZE 0.30 REF. THICK - PLATING HOT TIN DIP.
3. COLOUR STRIPE IS OPTIONAL. AVAILABLE IN THE FOLLOWING COLOURS: RED, GREEN, BLUE, PURPLE (BOLD SIGNIFIES CUSTOMER SPECIFIC CONFIGURATION).
4. REFER TO PACKAGING SPEC (PK-90871-001)
5. REFER TO APPLICATION SPEC (AS-99033-0008)



- PCB LAYOUT FOR 7CCT (2.5mm) CONNECTOR  
 (WITH OPTIONAL POSITIONAL RIB SLOT BETWEEN CCT 1 & 2)  
 - RECOMMENDED PCB THICKNESS 1.5±0.14

THIS DRAWING CONTAINS INFORMATION THAT IS PROPRIETARY TO MOLEX ELECTRONIC TECHNOLOGIES, LLC AND SHOULD NOT BE USED WITHOUT WRITTEN PERMISSION

NX - RELEASE EC NO: 105095 DRWN: CFISHER01 CHKD: CMONAHAN REV / APPR: BRUTTLE	2016/05/06	GENERAL TOLERANCES (UNLESS SPECIFIED)	DIMENSION UNITS	SCALE		
	2016/06/12	ANGULAR TOL ± 0.5 °	MM			
	2016/07/01	4 PLACES ±	DRWN BY	DATE		APPLI-MATE 2.5 FEMALE (MATL: NYLON PA6)
		3 PLACES ± 0.05	CFISHER01	2016/05/06		
	2 PLACES ± 0.1	CHK'D BY	DATE			
	1 PLACE ± 0.2	CMONAHAN	2016/06/12			
	0 PLACES ±	APPR BY	DATE			
	DRAFT WHERE APPLICABLE MUST REMAIN WITHIN DIMENSIONS	BRUTTLE	2016/07/01		PRODUCT CUSTOMER DRAWING	
A		DRAWING SIZE	THIRD ANGLE PROJECTION		SERIES MATERIAL NUMBER CUSTOMER	
		A2			91716 SEE CHARTS	
					DOCUMENT NUMBER DOC TYPE DOC PART SHEET NUMBER	
					917160001 PSD 000 1 OF 10	

3 CIRCUIT									
PART NUMBER	HOUSING USED	TERMINAL VOID POSITION	REMOVED POSITION KEYS	CONFIGURATION	FIRST ENDWALL	LAST ENDWALL	POLARIZING RIB BETWEEN	COLOUR STRIPE	
91716-0001	91715-0003	NONE	NONE		OPEN	OPEN	NONE	NONE	
91716-0002	91715-0003	NONE	a d		OPEN	OPEN	NONE	RED	
91716-0013	91715-0003	NONE	a		OPEN	OPEN	NONE	NONE	
91716-0014	91715-0003	NONE	b		OPEN	OPEN	NONE	NONE	
91716-0015	91715-0003	NONE	c		OPEN	OPEN	NONE	NONE	
91716-0016	91715-0003	NONE	d		OPEN	OPEN	NONE	NONE	
91716-0017	91715-0003	NONE	b d		OPEN	OPEN	NONE	NONE	
91716-0018	91715-0003	NONE	a c		OPEN	OPEN	NONE	NONE	
91716-0019	91715-0003	NONE	a d		OPEN	OPEN	NONE	NONE	
91716-0020	91715-0003	NONE	a b		OPEN	OPEN	NONE	NONE	
91716-0021	91715-0003	NONE	b c		OPEN	OPEN	NONE	NONE	
91716-0022	91715-0003	NONE	c d		OPEN	OPEN	NONE	NONE	
91716-0023	91715-0003	CCT 2	b d		OPEN	OPEN	NONE	NONE	
91716-0024	91715-0003	CCT 3	c		OPEN	OPEN	NONE	BLUE	
91716-0034	91715-0103	NONE	NONE		OPEN	OPEN	1&2	NONE	
91716-0041	91715-0203	NONE	NONE		OPEN	OPEN	2&3	NONE	
91716-0042	91715-0003	CCT 1	NONE		OPEN	OPEN	NONE	NONE	
91716-0043	91715-0003	CCT 1	c		OPEN	OPEN	NONE	NONE	
91716-0044	91715-0003	NONE	b d		OPEN	OPEN	NONE	BLUE	
91716-0045	91715-0003	NONE	b		OPEN	OPEN	NONE	BLUE	
91716-0046	91715-0003	CCT 1	d		OPEN	OPEN	NONE	NONE	
91716-0047	91715-0003	NONE	b d		OPEN	OPEN	NONE	RED	
91716-0048	91715-0003	NONE	b c d		OPEN	OPEN	NONE	NONE	
91716-0049	91715-0003	NONE	c		OPEN	OPEN	NONE	PURPLE	
91716-0050	91715-9903	NONE	NONE		OPEN	NARROW	NONE	NONE	
91716-0051	91715-0003	NONE	d		OPEN	OPEN	NONE	BLACK	

NOTES

- + DENOTES TERMINAL VOIDED POSITION  
 ⊕ DENOTES TERMINAL LOADED POSITION  
 | DENOTES POLARIZING RIB POSITION
- MOLEX HOUSING NO. FOR REFERENCE ONLY

THIS DRAWING CONTAINS INFORMATION THAT IS PROPRIETARY TO MOLEX ELECTRONIC TECHNOLOGIES, LLC AND SHOULD NOT BE USED WITHOUT WRITTEN PERMISSION												
NX - RELEASE EC NO: 105095 DRWN: CFISHER01 CHKD: CMONAHAN REV: APPR: BRUTTLE	GENERAL TOLERANCES (UNLESS SPECIFIED)		DIMENSION UNITS	SCALE	<b>molex</b>							
	ANGULAR TOL ± 0.5 °		MM									
	4 PLACES ±	CFISHER01	DATE	2016/05/06		APPLI-MATE 2.5 FEMALE (MATL: NYLON PA6)						
	3 PLACES ± 0.05	CHK'D BY	DATE	2016/06/12								
	2 PLACES ± 0.1	CMONAHAN	DATE	2016/06/12		PRODUCT CUSTOMER DRAWING						
	1 PLACE ± 0.2	APPR BY	DATE	2016/07/01								
0 PLACES ±	BRUTTLE	DATE	2016/07/01		SERIES	MATERIAL NUMBER	CUSTOMER					
DRAFT WHERE APPLICABLE MUST REMAIN WITHIN DIMENSIONS	DRAWING SIZE	THIRD ANGLE PROJECTION	A2		91716	SEE CHARTS						
A	REV	APP	A2		DOCUMENT NUMBER	917160001	DOC TYPE	PSD	DOC PART	000	SHEET NUMBER	2 OF 10

4 CIRCUIT								
PART NUMBER	HOUSING USED	TERMINAL VOID POSITION	REMOVED POSITION KEYS	CONFIGURATION	FIRST ENDWALL	LAST ENDWALL	POLARIZING RIB BETWEEN	COLOUR STRIPE
91716-0501	91715-0004	NONE	NONE		OPEN	OPEN	NONE	NONE
91716-0502	91715-0004	NONE	d		OPEN	OPEN	NONE	NONE
91716-0503	91715-0004	NONE	a d		OPEN	OPEN	NONE	NONE
91716-0504	91715-0004	NONE	c e		OPEN	OPEN	NONE	NONE
91716-0505	91715-0004	NONE	a		OPEN	OPEN	NONE	NONE
91716-0506	91715-0204	NONE	NONE		OPEN	OPEN	2&3	NONE
91716-0538	91715-0004	NONE	b		OPEN	OPEN	NONE	NONE
91716-0530	91715-0004	NONE	b c		OPEN	OPEN	NONE	NONE
91716-0539	91715-0004	NONE	a b		OPEN	OPEN	NONE	NONE
91716-0540	91715-0004	NONE	d e		OPEN	OPEN	NONE	NONE
91716-0541	91715-0004	NONE	ALL		OPEN	OPEN	NONE	NONE
91716-0542	91715-0004	NONE	a b e		OPEN	OPEN	NONE	NONE
91716-0507	91715-0004	CCT 1	NONE		OPEN	OPEN	NONE	NONE
91716-0543	91715-0304	NONE	NONE		OPEN	OPEN	3&4	RED
91716-0544	91715-0204	NONE	NONE		OPEN	OPEN	2&3	BLUE
91716-0545	91715-0004	NONE	d		OPEN	OPEN	NONE	BLUE
91716-0546	91715-0004	NONE	b		OPEN	OPEN	NONE	RED
91716-0547	91715-0004	NONE	b c		OPEN	OPEN	NONE	GREEN
91716-0548	91715-0004	NONE	c d		OPEN	OPEN	NONE	RED
91716-0549	91715-0004	NONE	a c e		OPEN	OPEN	NONE	NONE
91716-0550	91715-0104	NONE	NONE		OPEN	OPEN	1&2	NONE
91716-0551	91715-0004	NONE	NONE		OPEN	OPEN	NONE	GREEN
91716-0552	91715-0004	NONE	b c d		OPEN	OPEN	NONE	NONE
91716-0553	91715-0004	NONE	b d		OPEN	OPEN	NONE	NONE
91716-0554	91715-0004	NONE	a b d		OPEN	OPEN	NONE	NONE
91716-0555	91715-0004	NONE	a c e		OPEN	OPEN	NONE	BLACK
91716-0556	91715-0004	NONE	a e		OPEN	OPEN	NONE	NONE
91716-0557	91715-0104	NONE	a b d e		OPEN	OPEN	1&2	NONE
91716-0558	91715-0004	NONE	a c		OPEN	OPEN	NONE	NONE
91716-0559	91715-0004	NONE	b e		OPEN	OPEN	NONE	NONE

NOTES

- + DENOTES TERMINAL VOIDED POSITION  
⊕ DENOTES TERMINAL LOADED POSITION  
| DENOTES POLARIZING RIB POSITION
- MOLEX HOUSING NO. FOR REFERENCE ONLY

THIS DRAWING CONTAINS INFORMATION THAT IS PROPRIETARY TO MOLEX ELECTRONIC TECHNOLOGIES, LLC AND SHOULD NOT BE USED WITHOUT WRITTEN PERMISSION											
NX - RELEASE EC NO: 105095 DRWN: CFISHER01 CHKD: CMONAHAN REV / APPR: BRUTTLE	2016/05/06	2016/06/12	2016/07/01	GENERAL TOLERANCES (UNLESS SPECIFIED)	DIMENSION UNITS	SCALE					
				ANGULAR TOL ± 0.5 °	MM						
				4 PLACES ±	DRWN BY	DATE	<b>APPLI-MATE 2.5 FEMALE (MATL: NYLON PA6)</b>				
				3 PLACES ± 0.05	CFISHER01	2016/05/06					
				2 PLACES ± 0.1	CHK'D BY	DATE	<b>PRODUCT CUSTOMER DRAWING</b>				
			1 PLACE ± 0.2	CMONAHAN	2016/06/12						
			0 PLACES ±	APPR BY	DATE	SERIES	MATERIAL NUMBER	CUSTOMER			
			DRAFT WHERE APPLICABLE MUST REMAIN WITHIN DIMENSIONS	BRUTTLE	2016/07/01	91716	SEE CHARTS				
A	DRAWING SIZE		THIRD ANGLE PROJECTION		A2	DOCUMENT NUMBER		DOC TYPE	DOC PART	SHEET NUMBER	
						917160001	PSD	000	3 OF 10		

# 5 CIRCUIT

PART NUMBER	HOUSING USED	TERMINAL VOID POSITION	REMOVED POSITION KEYS	CONFIGURATION	FIRST ENDWALL	LAST ENDWALL	POLARIZING RIB BETWEEN	COLOUR STRIPE	
91716-1001	91715-0005	NONE	NONE		OPEN	OPEN	NONE	NONE	
91716-1002	91715-0305	NONE	ALL		OPEN	OPEN	3&4	NONE	
91716-1003	91715-0405	NONE	NONE		OPEN	OPEN	4&5	NONE	
91716-1004	91715-0005	NONE	cd		OPEN	OPEN	NONE	NONE	
91716-1005	91715-0005	NONE	a		OPEN	OPEN	NONE	NONE	
91716-1006	91715-0005	NONE	b		OPEN	OPEN	NONE	NONE	
91716-1007	91715-0005	NONE	abef		OPEN	OPEN	NONE	NONE	
91716-1008	91715-0205	NONE	NONE		OPEN	OPEN	2&3	NONE	
91716-1009	91715-0005	CCT 2,3,4	NONE		OPEN	OPEN	NONE	NONE	
91716-1010	91715-0005	CCT 2	c		OPEN	OPEN	NONE	NONE	
91716-1011	91715-0005	CCT 2	d		OPEN	OPEN	NONE	NONE	
91716-1012	91715-0005	CCT 2	b		OPEN	OPEN	NONE	NONE	
91716-1013	91715-0005	CCT 2	a		OPEN	OPEN	NONE	NONE	
91716-1014	91715-0005	NONE	b c d e		OPEN	OPEN	NONE	NONE	
91716-1015	91715-0305	CCT 2,3,4	NONE		OPEN	OPEN	3&4	RED	
91716-1016	91715-0005	CCT 2	b		OPEN	OPEN	NONE	RED	
91716-1017	91715-0005	NONE	d e		OPEN	OPEN	NONE	NONE	
91716-1018	91715-0005	NONE	a d f		OPEN	OPEN	NONE	NONE	
91716-1019	91715-0105	NONE	NONE		OPEN	OPEN	1&2	NONE	
91716-1020	91715-0005	CCT 2,3,4	b		OPEN	OPEN	NONE	NONE	
91716-1021	91715-0005	NONE	d		OPEN	OPEN	NONE	NONE	
91716-1022	91715-0005	NONE	b f		OPEN	OPEN	NONE	RED	
91716-1023	91715-0005	CCT 2,3,4	ce		OPEN	OPEN	NONE	NONE	
91716-1024	91715-0205	NONE	abef		OPEN	OPEN	2&3	NONE	
91716-1025	91715-0005	CCT 2,3,4	cf		OPEN	OPEN	NONE	NONE	
91716-1026	93473-0205	NONE	ALL		OPEN	OPEN	2&3	NONE	LOCKING RETENTION FEATURE
91716-1027	91715-0205	NONE	ALL		OPEN	OPEN	2&3	NONE	
91716-1028	93473-0005	NONE	NONE		OPEN	OPEN	NONE	NONE	LOCKING RETENTION FEATURE

## NOTES

- + DENOTES TERMINAL VOIDED POSITION
- ⊕ DENOTES TERMINAL LOADED POSITION
- | DENOTES POLARIZING RIB POSITION
2. MOLEX HOUSING NO. FOR REFERENCE ONLY

THIS DRAWING CONTAINS INFORMATION THAT IS PROPRIETARY TO MOLEX ELECTRONIC TECHNOLOGIES, LLC AND SHOULD NOT BE USED WITHOUT WRITTEN PERMISSION

NX - RELEASE EC NO: 105095 DRWN: CFISHER01 CHKD: CMONAHAN REV / APPR: BRUTTLE	2016/05/06	2016/06/12	2016/07/01	GENERAL TOLERANCES (UNLESS SPECIFIED)	DIMENSION UNITS	SCALE	
				ANGULAR TOL ± 0.5 °	MM		
	4 PLACES	±		CFISHER01	DATE	2016/05/06	
	3 PLACES	±	0.05	CHK'D BY	DATE		
			2 PLACES	±	0.1	CMONAHAN	2016/06/12
			1 PLACE	±	0.2	APPR BY	DATE
			0 PLACES	±		BRUTTLE	2016/07/01
DRAFT WHERE APPLICABLE MUST REMAIN WITHIN DIMENSIONS				DRAWING SIZE	THIRD ANGLE PROJECTION		
				A2			
PRODUCT CUSTOMER DRAWING		SERIES	MATERIAL NUMBER	CUSTOMER			
		91716	SEE CHARTS				
DOCUMENT NUMBER		DOC TYPE	DOC PART	SHEET NUMBER			
917160001		PSD	000	4 OF 10			

6 CIRCUIT								
PART NUMBER	HOUSING USED	TERMINAL VOID POSITION	REMOVED POSITION KEYS	CONFIGURATION	FIRST ENDWALL	LAST ENDWALL	POLARIZING RIB BETWEEN	COLOUR STRIPE
91716-1501	91715-0006	NONE	NONE		OPEN	OPEN	NONE	NONE
91716-1502	91715-0306	NONE	ALL		OPEN	OPEN	3&4	NONE
91716-1503	91715-0006	NONE	c e f g		OPEN	OPEN	NONE	NONE
91716-1504	91715-0206	NONE	ALL		OPEN	OPEN	2&3	NONE
91716-1505	91715-0006	CCT 2,5	d f		OPEN	OPEN	NONE	NONE
91716-1506	91715-0006	NONE	a b f g		OPEN	OPEN	NONE	NONE
91716-1507	91715-0006	NONE	e f		OPEN	OPEN	NONE	NONE
91716-1509	91715-0006	NONE	g		OPEN	OPEN	NONE	NONE
91716-1510	91715-0006	CCT 2	c f		OPEN	OPEN	NONE	NONE
91716-1511	91715-0006	CCT 2,5	NONE		OPEN	OPEN	NONE	NONE
91716-1512	91715-0006	CCT 3,5	NONE		OPEN	OPEN	NONE	NONE
91716-1513	91715-0006	CCT 2,4	b d e f		OPEN	OPEN	NONE	NONE
91716-1514	91715-0106	CCT 3,5	NONE		OPEN	OPEN	1&2	NONE
91716-1515	91715-0206	CCT 2,5	NONE		OPEN	OPEN	2&3	NONE
91716-1516	91715-0306	NONE	c f		OPEN	OPEN	3&4	NONE
91716-1517	91715-0006	NONE	c e		OPEN	OPEN	NONE	NONE
91716-1518	91715-0006	CCT 2,4	NONE		OPEN	OPEN	NONE	NONE
91716-1519	91715-0006	NONE	a c e		OPEN	OPEN	NONE	NONE
91716-1520	91715-0006	CCT 5	c e		OPEN	OPEN	NONE	NONE
91716-1521	91715-0006	CCT 2,4,5,6	c e		OPEN	OPEN	NONE	NONE
91716-1522	91715-0006	CCT 2,6	c e		OPEN	OPEN	NONE	NONE
91716-1523	91715-0406	NONE	NONE		OPEN	OPEN	4&5	NONE
91716-1524	91715-0006	CCT 2,4,5,6	NONE		OPEN	OPEN	NONE	NONE
91716-1525	91715-0006	CCT 2,6	NONE		OPEN	OPEN	NONE	NONE
91716-1526	91715-0006	CCT 2,5	NONE		OPEN	OPEN	NONE	NONE
91716-1527	91715-0006	CCT 2,5	c e		OPEN	OPEN	NONE	NONE
91716-1528	91715-0006	CCT 2,5	a b d f g		OPEN	OPEN	NONE	GREEN
91716-1529	91715-0006	NONE	d		OPEN	OPEN	NONE	NONE
91716-1531	91715-0006	CCT 1,2,3,5	NONE		OPEN	OPEN	NONE	NONE
91716-1532	91715-0006	CCT 1,2,3,5	d f		OPEN	OPEN	NONE	NONE

6 CIRCUIT								
PART NUMBER	HOUSING USED	TERMINAL VOID POSITION	REMOVED POSITION KEYS	CONFIGURATION	FIRST ENDWALL	LAST ENDWALL	POLARIZING RIB BETWEEN	COLOUR STRIPE
91716-1534	91715-0006	CCT 3,4	b d f		OPEN	OPEN	NONE	NONE
91716-1535	91715-0006	CCT 4,5	b d f		OPEN	OPEN	NONE	NONE
91716-1536	91715-0206	NONE	NONE		OPEN	OPEN	2&3	NONE
91716-1537	91715-0006	NONE	d		OPEN	OPEN	NONE	BLUE
91716-1538	91715-0006	CCT 2,5	b d		OPEN	OPEN	NONE	NONE
91716-1539	91715-0006	CCT 5,6	c f		OPEN	OPEN	NONE	NONE
91716-1540	91715-0006	CCT 2,4	d e		OPEN	OPEN	NONE	GREEN
91716-1541	91715-0006	NONE	a f g		OPEN	OPEN	NONE	NONE
91716-1542	91715-0006	NONE	NONE		OPEN	OPEN	NONE	RED
91716-1543	91715-0506	NONE	NONE		OPEN	OPEN	5&6	NONE
91716-1544	91715-0006	NONE	c e g		OPEN	OPEN	NONE	RED
91716-1545	91715-0006	NONE	d f		OPEN	OPEN	NONE	BLACK
91716-1546	91715-0006	NONE	a d		OPEN	OPEN	NONE	NONE
91716-1547	91715-0006	NONE	b e f		OPEN	OPEN	NONE	NONE
91716-1548	91715-0006	NONE	c d e		OPEN	OPEN	NONE	NONE
91716-1549	91715-0406	NONE	NONE		OPEN	OPEN	4&5	NONE
91716-1550	91715-0006	NONE	b d f		OPEN	OPEN	NONE	NONE
91716-1551	91715-0006	NONE	a c e g		OPEN	OPEN	NONE	NONE
91716-1552	91715-0006	NONE	a b d f		OPEN	OPEN	NONE	NONE
91716-1553	91715-0006	CCT 2,5	c d		OPEN	OPEN	NONE	BLACK
91716-1554	91715-0006	CCT 2,4	b		OPEN	OPEN	NONE	RED
91716-1555	91715-0006	NONE	c f		OPEN	OPEN	NONE	NONE
91716-1556	91715-0006	NONE	b d e g		OPEN	OPEN	NONE	NONE
91716-1557	91715-0006	CCT 2,4	b g		OPEN	OPEN	NONE	RED
91716-1558	91715-0006	NONE	d f		OPEN	OPEN	NONE	NONE

6CCT CONTINUED ON NEXT SHEET

NOTES

- + DENOTES TERMINAL VOIDED POSITION  
⊕ DENOTES TERMINAL LOADED POSITION  
| DENOTES POLARIZING RIB POSITION
- MOLEX HOUSING NO. FOR REFERENCE ONLY

THIS DRAWING CONTAINS INFORMATION THAT IS PROPRIETARY TO MOLEX ELECTRONIC TECHNOLOGIES, LLC AND SHOULD NOT BE USED WITHOUT WRITTEN PERMISSION

NX - RELEASE EC NO: 105095 DRWN: CFISHER01 CHKD: CMONAHAN APPR: BRUTTLE	GENERAL TOLERANCES (UNLESS SPECIFIED) DIMENSION UNITS: MM SCALE:			
	ANGULAR TOL ± 0.5 ° DRWN BY: CFISHER01 DATE: 2016/05/06		APPLI-MATE 2.5 FEMALE (MATL: NYLON PA6)	
	4 PLACES ± 3 PLACES ± 0.05 2 PLACES ± 0.1 1 PLACE ± 0.2 0 PLACES ±			PRODUCT CUSTOMER DRAWING SERIES: 91716 MATERIAL NUMBER: SEE CHARTS CUSTOMER:
	DRAFT WHERE APPLICABLE MUST REMAIN WITHIN DIMENSIONS DRAWING SIZE: A2 THIRD ANGLE PROJECTION			

6 CIRCUIT									
PART NUMBER	HOUSING USED	TERMINAL VOID POSITION	REMOVED POSITION KEYS	CONFIGURATION	FIRST ENDWALL	LAST ENDWALL	POLARIZING RIB BETWEEN	COLOUR STRIPE	
91716-1559	91715-0006	CCT 1	NONE		OPEN	OPEN	NONE	NONE	
91716-1560	91715-0006	NONE	a c e f g		OPEN	OPEN	NONE	NONE	
91716-1561	91715-0006	NONE	a d g		OPEN	OPEN	NONE	NONE	
91716-1562	91715-0006	NONE	a c d e f g		OPEN	OPEN	NONE	NONE	
91716-1563	91715-0006	CCT 5	a c d e f g		OPEN	OPEN	NONE	NONE	
91716-1564	91715-0006	CCT 6	a c d e f g		OPEN	OPEN	NONE	NONE	
91716-1565	91715-0006	CCT 5	NONE		OPEN	OPEN	NONE	NONE	
91716-1566	93473-0006	NONE	NONE		OPEN	OPEN	NONE	NONE	LOCKING RETENTION FEATURE
91716-1567	93473-0006	NONE	d f		OPEN	OPEN	NONE	NONE	LOCKING RETENTION FEATURE
91716-1568	93473-0006	CCT 1	NONE		OPEN	OPEN	NONE	NONE	LOCKING RETENTION FEATURE
91716-1569	93473-0006	NONE	a c d e f g		OPEN	OPEN	NONE	NONE	LOCKING RETENTION FEATURE
91716-1570	93473-0006	CCT 5	a c d e f g		OPEN	OPEN	NONE	NONE	LOCKING RETENTION FEATURE
91716-1571	93473-0006	CCT 5	NONE		OPEN	OPEN	NONE	NONE	LOCKING RETENTION FEATURE
91716-1572	93473-0006	NONE	d		OPEN	OPEN	NONE	PURPLE	LOCKING RETENTION FEATURE
91716-1573	91715-0006	CCT 2.5	c e g		OPEN	OPEN	NONE	RED	

NOTES

- + DENOTES TERMINAL VOIDED POSITION  
⊕ DENOTES TERMINAL LOADED POSITION  
| DENOTES POLARIZING RIB POSITION
- MOLEX HOUSING NO. FOR REFERENCE ONLY

THIS DRAWING CONTAINS INFORMATION THAT IS PROPRIETARY TO MOLEX ELECTRONIC TECHNOLOGIES, LLC AND SHOULD NOT BE USED WITHOUT WRITTEN PERMISSION									
NX - RELEASE EC NO: 105095 DRWN: CFISHER01 CHKD: CMONAHAN APPR: BRUTTLE	GENERAL TOLERANCES (UNLESS SPECIFIED)		DIMENSION UNITS	SCALE					
	ANGULAR TOL ± 0.5 °		MM						
	4 PLACES ±	DRWN BY		DATE	APPLI-MATE 2.5 FEMALE (MATL: NYLON PA6)				
	3 PLACES ± 0.05	CFISHER01		2016/05/06					
	2 PLACES ± 0.1	CHK'D BY		DATE	PRODUCT CUSTOMER DRAWING				
1 PLACE ± 0.2	CMONAHAN		2016/06/12						
0 PLACES ±	APPR BY		DATE	SERIES: 91716 MATERIAL NUMBER: SEE CHARTS CUSTOMER:					
DRAFT WHERE APPLICABLE MUST REMAIN WITHIN DIMENSIONS		BRUTTLE							2016/07/01
DRAWING SIZE		THIRD ANGLE PROJECTION		DOCUMENT NUMBER		DOC TYPE	DOC PART	SHEET NUMBER	
A2				917160001		PSD	000	6 OF 10	

7 CIRCUIT									
PART NUMBER	HOUSING USED	TERMINAL VOID POSITION	REMOVED POSITION KEYS	CONFIGURATION	FIRST ENDWALL	LAST ENDWALL	POLARIZING RIB BETWEEN	COLOUR STRIPE	
91716-2001	91715-0007	NONE	NONE		OPEN	OPEN	NONE	NONE	
91716-2002	91715-0207	NONE	ALL		OPEN	OPEN	2&3	NONE	
91716-2004	91715-0007	NONE	a		OPEN	OPEN	NONE	NONE	
91716-2005	91715-0007	CCT 2	h		OPEN	OPEN	NONE	NONE	
91716-2006	91715-0007	CCT 4	a		OPEN	OPEN	NONE	NONE	
91716-2007	91715-0007	CCT 2	NONE		OPEN	OPEN	NONE	NONE	
91716-2008	91715-0007	CCT 6	NONE		OPEN	OPEN	NONE	NONE	
91716-2009	91715-0007	CCT 2	b c e g		OPEN	OPEN	NONE	BLUE	
91716-2010	91715-0007	CCT 4,6	b d f		OPEN	OPEN	NONE	RED	
91716-2011	91715-0007	CCT 4,6	b d f		OPEN	OPEN	NONE	BLUE	
91716-2012	91715-0007	CCT 2	NONE		OPEN	OPEN	NONE	BLUE	
91716-2013	91715-0007	CCT 2	b d e f h		OPEN	OPEN	NONE	BLUE	
91716-2014	91715-0007	CCT 4,6	NONE		OPEN	OPEN	NONE	BLUE	
91716-2015	91715-0007	CCT 4,6	c d e f h		OPEN	OPEN	NONE	BLUE	
91716-2016	91715-0007	CCT 6	c d e f h		OPEN	OPEN	NONE	BLUE	
91716-2017	91715-0007	CCT 6	c d e f		OPEN	OPEN	NONE	BLUE	
91716-2018	91715-0007	CCT 6	NONE		OPEN	OPEN	NONE	BLUE	
91716-2019	91715-0007	CCT 2	NONE		OPEN	OPEN	NONE	BLACK	
91716-2020	91715-0007	NONE	a c e f h		OPEN	OPEN	NONE	NONE	
91716-2021	91715-0007	NONE	a		OPEN	OPEN	NONE	BLACK	
91716-2022	91715-0007	NONE	b c d f		OPEN	OPEN	NONE	NONE	
91716-2023	91715-0007	NONE	a d		OPEN	OPEN	NONE	NONE	
91716-2024	91715-0007	NONE	a b e f		OPEN	OPEN	NONE	NONE	
91716-2025	91705-0507	NONE	NONE		OPEN	OPEN	5&6	NONE	
91716-2026	91705-0007	NONE	ALL		OPEN	OPEN	NONE	NONE	
91716-2027	91715-0007	CCT 6	a c d e f		OPEN	OPEN	NONE	BLUE	
91716-2028	91715-0007	CCT 1,2,3,4,6	a c f		OPEN	OPEN	NONE	NONE	
91716-2029	91715-0007	CCT 4	a		OPEN	OPEN	NONE	RED	
91716-2030	93473-0307	NONE	ALL		OPEN	OPEN	3&4	NONE	LOCKING RETENTION FEATURE
91716-2031	91715-0307	NONE	ALL		OPEN	OPEN	3&4	NONE	

7 CIRCUIT									
PART NUMBER	HOUSING USED	TERMINAL VOID POSITION	REMOVED POSITION KEYS	CONFIGURATION	FIRST ENDWALL	LAST ENDWALL	POLARIZING RIB BETWEEN	COLOUR STRIPE	
91716-2032	93473-0007	NONE	NONE		OPEN	OPEN	NONE	NONE	LOCKING RETENTION FEATURE
91716-2033	91715-0627	NONE	NONE		CLOSED	CLOSED	6&7	NONE	

NOTES

- + DENOTES TERMINAL VOIDED POSITION  
⊕ DENOTES TERMINAL LOADED POSITION  
| DENOTES POLARIZING RIB POSITION
- MOLEX HOUSING NO. FOR REFERENCE ONLY

THIS DRAWING CONTAINS INFORMATION THAT IS PROPRIETARY TO MOLEX ELECTRONIC TECHNOLOGIES, LLC AND SHOULD NOT BE USED WITHOUT WRITTEN PERMISSION

NX - RELEASE EC NO: 105095 DRWN: CFISHER01 CHKD: CMONAHAN REV / APPR: BRUTTLE	2016/05/06 2016/06/12 2016/07/01	GENERAL TOLERANCES (UNLESS SPECIFIED) ANGULAR TOL ± 0.5 °	DIMENSION UNITS: MM SCALE:	
	4 PLACES ± 3 PLACES ± 0.05 2 PLACES ± 0.1 1 PLACE ± 0.2 0 PLACES ±	DRWN BY: CFISHER01 DATE: 2016/05/06 CHKD BY: CMONAHAN DATE: 2016/06/12	PRODUCT CUSTOMER DRAWING	
	DRAFT WHERE APPLICABLE MUST REMAIN WITHIN DIMENSIONS	DRAWING SIZE: A2 THIRD ANGLE PROJECTION	SERIES: 91716 MATERIAL NUMBER: SEE CHARTS CUSTOMER:	
	DOCUMENT NUMBER: 917160001 DOC TYPE: PSD DOC PART: 000 SHEET NUMBER: 7 OF 10			



# 8 CIRCUIT

PART NUMBER	HOUSING USED	TERMINAL VOID POSITION	REMOVED POSITION KEYS	CONFIGURATION	FIRST ENDWALL	LAST ENDWALL	POLARIZING RIB BETWEEN	COLOUR STRIPE
91716-2501	91715-0008	NONE	NONE		OPEN	OPEN	NONE	NONE
91716-2502	91715-0308	NONE	NONE		OPEN	OPEN	3&4	NONE
91716-2503	91715-0008	NONE	cfhi		OPEN	OPEN	NONE	NONE
91716-2504	91715-0008	NONE	bcdhi		OPEN	OPEN	NONE	NONE
91716-2505	91715-0008	NONE	bcgh		OPEN	OPEN	NONE	BLUE
91716-2506	91715-0008	NONE	cf		OPEN	OPEN	NONE	NONE
91716-2507	91715-0008	NONE	cfhi		OPEN	OPEN	NONE	BLUE
91716-2508	91715-0008	NONE	NONE		OPEN	OPEN	NONE	BLUE
91716-2509	91715-0008	NONE	acdegi		OPEN	OPEN	NONE	BLUE
91716-2510	91715-0008	NONE	cdef		OPEN	OPEN	NONE	BLUE
91716-2511	91715-0008	NONE	NONE		OPEN	OPEN	NONE	BLACK
91716-2512	91715-0008	NONE	cfhi		OPEN	OPEN	NONE	BLACK
91716-2513	91715-0008	NONE	cdgh		OPEN	OPEN	NONE	NONE
91716-2514	91715-0008	NONE	acdefghi		OPEN	OPEN	NONE	BLUE
91716-2515	91715-0008	NONE	abdfhi		OPEN	OPEN	NONE	NONE
91716-2516	91715-0008	NONE	bcdhi		OPEN	OPEN	NONE	BLUE
91716-2517	91715-2008	NONE	NONE		OPEN	OPEN	1&2, 7&8	NONE
91716-2518	91715-0008	NONE	bcdfhi		OPEN	OPEN	NONE	NONE
91716-2519	91715-0008	NONE	acefhi		OPEN	OPEN	NONE	NONE
91716-2520	91715-0008	NONE	ALL		OPEN	OPEN	NONE	NONE
91716-2521	91715-0008	CCT 7 & 8	abdfhi		OPEN	OPEN	NONE	NONE
91716-2522	91715-0008	NONE	bcdfhi		OPEN	OPEN	NONE	BLUE

# 9 CIRCUIT

PART NUMBER	HOUSING USED	TERMINAL VOID POSITION	REMOVED POSITION KEYS	CONFIGURATION	FIRST ENDWALL	LAST ENDWALL	POLARIZING RIB BETWEEN	COLOUR STRIPE
91716-3001	91715-0009	NONE	NONE		OPEN	OPEN	NONE	NONE
91716-3002	91715-0409	NONE	NONE		OPEN	OPEN	4&5	NONE
91716-3003	91715-0009	CCT 2,5,8	NONE		OPEN	OPEN	NONE	NONE
91716-3004	91715-0209	NONE	NONE		OPEN	OPEN	2&3	NONE
91716-3005	91715-0009	CCT 2,5,8	bcegi		OPEN	OPEN	NONE	GREEN
91716-3006	91715-0009	CCT 2,5,8	NONE		OPEN	OPEN	NONE	GREEN
91716-3007	91715-0009	CCT 2,5,8	bcefgij		OPEN	OPEN	NONE	GREEN
91716-3008	91715-0009	CCT 2,5,8	bcefgi		OPEN	OPEN	NONE	GREEN
91716-3009	91715-0009	CCT 2,5,7	cg		OPEN	OPEN	NONE	NONE
91716-3010	91715-0009	CCT 2,5,8	bchi		OPEN	OPEN	NONE	NONE
91716-3011	91715-0709	NONE	NONE		OPEN	OPEN	7&8	NONE
91716-3012	91715-0509	NONE	NONE		OPEN	OPEN	5&6	NONE
91716-3013	91715-0029	NONE	NONE		CLOSED	CLOSED	NONE	NONE

## NOTES

- + DENOTES TERMINAL VOIDED POSITION  
⊕ DENOTES TERMINAL LOADED POSITION  
| DENOTES POLARIZING RIB POSITION
- MOLEX HOUSING NO. FOR REFERENCE ONLY

THIS DRAWING CONTAINS INFORMATION THAT IS PROPRIETARY TO MOLEX ELECTRONIC TECHNOLOGIES, LLC AND SHOULD NOT BE USED WITHOUT WRITTEN PERMISSION

NX - RELEASE EC NO: 105095 DRWN: CFISHER01 CHKD: CMONAHAN REV APPR: BRUTTLE	2016/05/06 2016/06/12 2016/07/01	GENERAL TOLERANCES (UNLESS SPECIFIED) ANGULAR TOL ± 0.5 ° 4 PLACES ± 3 PLACES ± 0.05 2 PLACES ± 0.1 1 PLACE ± 0.2 0 PLACES ±	DIMENSION UNITS: MM SCALE: DRWN BY: CFISHER01 DATE: 2016/05/06 CHK'D BY: CMONAHAN DATE: 2016/06/12 APPR BY: BRUTTLE DATE: 2016/07/01		
	APPLI-MATE 2.5 FEMALE (MATL: NYLON PA6)		PRODUCT CUSTOMER DRAWING		
	DRAFT WHERE APPLICABLE MUST REMAIN WITHIN DIMENSIONS		DRAWING SIZE: A2 THIRD ANGLE PROJECTION	SERIES: 91716 MATERIAL NUMBER: SEE CHARTS CUSTOMER:	
	DOCUMENT NUMBER: 917160001 DOC TYPE: PSD DOC PART: 000 SHEET NUMBER: 8 OF 10				

10 CIRCUIT								
PART NUMBER	HOUSING USED	TERMINAL VOID POITION	REMOVED POSITION KEYS	CONFIGURATION	FIRST ENDWALL	LAST ENDWALL	POLARIZING RIB BETWEEN	COLOUR STRIPE
91716-3501	91715-0010	NONE	NONE		OPEN	OPEN	NONE	NONE
91716-3502	91715-0210	NONE	ALL		OPEN	OPEN	2&3	NONE
91716-3503	91715-0010	Cct 2,5,7,9	NONE		OPEN	OPEN	NONE	NONE
91716-3504	91715-0410	NONE	NONE		OPEN	OPEN	4&5	NONE

13 CIRCUIT								
PART NUMBER	HOUSING USED	TERMINAL VOID POITION	REMOVED POSITION KEYS	CONFIGURATION	FIRST ENDWALL	LAST ENDWALL	POLARIZING RIB BETWEEN	COLOUR STRIPE
91716-5001	91715-0013	NONE	NONE		OPEN	OPEN	NONE	NONE
91716-5002	91715-0013	CCT 4,6,8,10,12	NONE		OPEN	OPEN	NONE	NONE
91716-5003	91715-0013	NONE	cfhikl		OPEN	OPEN	NONE	NONE

11 CIRCUIT								
PART NUMBER	HOUSING USED	TERMINAL VOID POITION	REMOVED POSITION KEYS	CONFIGURATION	FIRST ENDWALL	LAST ENDWALL	POLARIZING RIB BETWEEN	COLOUR STRIPE
91716-4001	91715-0011	NONE	NONE		OPEN	OPEN	NONE	NONE
91716-4002	91715-0031	NONE	NONE		CLOSED	CLOSED	NONE	NONE
91716-4003	91715-0511	NONE	NONE		OPEN	OPEN	5&6	NONE
91716-4004	91715-1031	NONE	NONE		CLOSED	CLOSED	10&11	NONE
91716-4005	91715-1011	NONE	NONE		OPEN	OPEN	10&11	NONE

14 CIRCUIT								
PART NUMBER	HOUSING USED	TERMINAL VOID POITION	REMOVED POSITION KEYS	CONFIGURATION	FIRST ENDWALL	LAST ENDWALL	POLARIZING RIB BETWEEN	COLOUR STRIPE
91716-5501	91715-0014	NONE	NONE		OPEN	OPEN	NONE	NONE

12 CIRCUIT								
PART NUMBER	HOUSING USED	TERMINAL VOID POITION	REMOVED POSITION KEYS	CONFIGURATION	FIRST ENDWALL	LAST ENDWALL	POLARIZING RIB BETWEEN	COLOUR STRIPE
91716-4501	91715-0012	NONE	NONE		OPEN	OPEN	NONE	NONE
91716-4502	91715-0012	CCT 2,5,8,11	bcdejkl		OPEN	OPEN	NONE	GREEN
91716-4503	91715-0012	CCT 2,5,8,11	NONE		OPEN	OPEN	NONE	GREEN
91716-4504	91715-0012	CCT 2,5,8,11	acdeghiklm		OPEN	OPEN	NONE	GREEN
91716-4505	91715-0012	CCT 2,5,8,11	cdeghiklm		OPEN	OPEN	NONE	GREEN

15 CIRCUIT								
PART NUMBER	HOUSING USED	TERMINAL VOID POITION	REMOVED POSITION KEYS	CONFIGURATION	FIRST ENDWALL	LAST ENDWALL	POLARIZING RIB BETWEEN	COLOUR STRIPE
91716-6001	91715-0015	NONE	NONE		OPEN	OPEN	NONE	NONE
91716-6002	91715-0015	CCT 4,6,8,10,12,14	op		OPEN	OPEN	NONE	NONE
91716-6003	91715-0515	NONE	ap		OPEN	OPEN	5&6	NONE

- NOTES
- + DENOTES TERMINAL VOIDED POSITION  
⊕ DENOTES TERMINAL LOADED POSITION  
| DENOTES POLARIZING RIB POSITION
  - MOLEX HOUSING NO. FOR REFERENCE ONLY

THIS DRAWING CONTAINS INFORMATION THAT IS PROPRIETARY TO MOLEX ELECTRONIC TECHNOLOGIES, LLC AND SHOULD NOT BE USED WITHOUT WRITTEN PERMISSION

NX - RELEASE EC NO: 105095 DRWN: CFISHER01 CHKD: CMONAHAN REV APPR: BRUTTLE	2016/05/06	2016/06/12	2016/07/01	GENERAL TOLERANCES (UNLESS SPECIFIED)	DIMENSION UNITS	SCALE	<b>molex</b>  APPLI-MATE 2.5 FEMALE (MATL: NYLON PA6)
				ANGULAR TOL ± 0.5 °	MM		
				4 PLACES ±	DRWN BY	DATE	
				3 PLACES ± 0.05	CFISHER01	2016/05/06	
			2 PLACES ± 0.1	CHK'D BY	DATE	PRODUCT CUSTOMER DRAWING	
			1 PLACE ± 0.2	CMONAHAN	2016/06/12		
			0 PLACES ±	APPR BY	DATE	SERIES	
			DRAFT WHERE APPLICABLE MUST REMAIN WITHIN DIMENSIONS	BRUTTLE	2016/07/01	91716	
				DRAWING SIZE	THIRD ANGLE PROJECTION	MATERIAL NUMBER	
				A2		SEE CHARTS	
						CUSTOMER	
						DOCUMENT NUMBER	
						917160001	
						DOC TYPE	
						PSD	
						DOC PART	
						000	
						SHEET NUMBER	
						9 OF 10	

### 16 CIRCUIT

PART NUMBER	HOUSING USED	TERMINAL VOID POITION	REMOVED POSITION KEYS	CONFIGURATION	FIRST ENDWALL	LAST ENDWALL	POLARIZING RIB BETWEEN	COLOUR STRIPE
91716-6501	91716-0016	NONE	NONE		OPEN	OPEN	NONE	NONE

### 17 CIRCUIT

PART NUMBER	HOUSING USED	TERMINAL VOID POITION	REMOVED POSITION KEYS	CONFIGURATION	FIRST ENDWALL	LAST ENDWALL	POLARIZING RIB BETWEEN	COLOUR STRIPE
91716-7001	91715-0017	NONE	NONE		OPEN	OPEN	NONE	NONE

### 18 CIRCUIT

PART NUMBER	HOUSING USED	TERMINAL VOID POITION	REMOVED POSITION KEYS	CONFIGURATION	FIRST ENDWALL	LAST ENDWALL	POLARIZING RIB BETWEEN	COLOUR STRIPE
91716-7501	91715-0018	NONE	NONE		OPEN	OPEN	NONE	NONE

### 19 CIRCUIT

PART NUMBER	HOUSING USED	TERMINAL VOID POITION	REMOVED POSITION KEYS	CONFIGURATION	FIRST ENDWALL	LAST ENDWALL	POLARIZING RIB BETWEEN	COLOUR STRIPE
91716-8001	91715-0019	NONE	NONE		OPEN	OPEN	NONE	NONE

### 20 CIRCUIT

PART NUMBER	HOUSING USED	TERMINAL VOID POITION	REMOVED POSITION KEYS	CONFIGURATION	FIRST ENDWALL	LAST ENDWALL	POLARIZING RIB BETWEEN	COLOUR STRIPE
91716-8501	91715-0020	NONE	NONE		OPEN	OPEN	NONE	NONE

#### NOTES

- + DENOTES TERMINAL VOIDED POSITION  
⊕ DENOTES TERMINAL LOADED POSITION  
| DENOTES POLARIZING RIB POSITION
- MOLEX HOUSING NO. FOR REFERENCE ONLY

THIS DRAWING CONTAINS INFORMATION THAT IS PROPRIETARY TO MOLEX ELECTRONIC TECHNOLOGIES, LLC AND SHOULD NOT BE USED WITHOUT WRITTEN PERMISSION

NX - RELEASE EC NO: 105095 DRWN: CFISHER01 CHKD: CMONAHAN APPR: BRUTTLE	2016/05/06	2016/06/12	2016/07/01	GENERAL TOLERANCES (UNLESS SPECIFIED)	DIMENSION UNITS	SCALE			
				4 PLACES ±	MM			APPLI-MATE 2.5 FEMALE (MATL: NYLON PA6)	
				3 PLACES ± 0.05	DRWN BY	DATE			
				2 PLACES ± 0.1	CFISHER01	2016/05/06			
			1 PLACE ± 0.2	CHK'D BY	DATE	PRODUCT CUSTOMER DRAWING			
			0 PLACES ±	CMONAHAN	2016/06/12				
			DRAFT WHERE APPLICABLE MUST REMAIN WITHIN DIMENSIONS	APPR BY	DATE	SERIES	MATERIAL NUMBER	CUSTOMER	
				BRUTTLE	2016/07/01	91716	SEE CHARTS		
				DRAWING SIZE	THIRD ANGLE PROJECTION	DOCUMENT NUMBER	DOC TYPE	DOC PART	SHEET NUMBER
				A2		917160001	PSD	000	10 OF 10