



Chipsmall Limited consists of a professional team with an average of over 10 year of expertise in the distribution of electronic components. Based in Hongkong, we have already established firm and mutual-benefit business relationships with customers from,Europe,America and south Asia,supplying obsolete and hard-to-find components to meet their specific needs.

With the principle of “Quality Parts,Customers Priority,Honest Operation,and Considerate Service”,our business mainly focus on the distribution of electronic components. Line cards we deal with include Microchip,ALPS,ROHM,Xilinx,Pulse,ON,Everlight and Freescale. Main products comprise IC,Modules,Potentiometer,IC Socket,Relay,Connector.Our parts cover such applications as commercial,industrial, and automotives areas.

We are looking forward to setting up business relationship with you and hope to provide you with the best service and solution. Let us make a better world for our industry!



Contact us

Tel: +86-755-8981 8866 Fax: +86-755-8427 6832

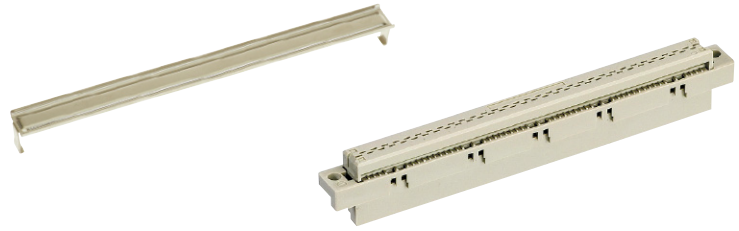
Email & Skype: info@chipsmall.com Web: www.chipsmall.com

Address: A1208, Overseas Decoration Building, #122 Zhenhua RD., Futian, Shenzhen, China



Number of contacts

64



Female connectors

DIN Signal up to 2 A

| Identification | No. of contacts | Part number | Drawing | Dimensions in mm |
|--|---------------------|--|---|--|
| Female connector for insulation displacement | 64 | Performance level 2 ¹⁾ 09 02 264 6828 Performance level 3 ¹⁾ 09 02 264 7828 | <p>Cable 1 to contact 1 b Contact arrangement View from termination side</p> | |
| Strain relief (metal) | | 09 03 000 9940 | | |
| Panel cut out | | | | |
| Flat cable AWG 28/7 | | | <p>Wire (tinned) Gauge AWG 28/7 Insulation material as per UL style PVC</p> | ²⁾ Termination area spacing = 508 mm Important: always store reels vertically |
| Round flat cable ³⁾ | | | | ³⁾ Termination area spacing = 100 mm |
| with screening | 30.48 m 100.00 m | 64 64 | 09 18 064 7007 09 18 064 7010 | |
| without screening | 30.48 m | 64 | 09 18 064 7008 | |
| with colour coded twisted pair ²⁾ | 30.48 m | 64 | 09 18 064 7005 09 18 064 7006 | |
| Bench press Base plate | | | 09 99 000 0114 09 99 000 0150 | |
| Cable cutter | | | 09 99 000 0116 | |
| Spare parts | | | | |
| Blade | | | 09 99 000 0179 | |
| Cutting plate | | | 09 99 000 0180 | |