



Chipsmall Limited consists of a professional team with an average of over 10 year of expertise in the distribution of electronic components. Based in Hongkong, we have already established firm and mutual-benefit business relationships with customers from,Europe,America and south Asia,supplying obsolete and hard-to-find components to meet their specific needs.

With the principle of "Quality Parts,Customers Priority,Honest Operation,and Considerate Service",our business mainly focus on the distribution of electronic components. Line cards we deal with include Microchip,ALPS,ROHM,Xilinx,Pulse,ON,Everlight and Freescale. Main products comprise IC,Modules,Potentiometer,IC Socket,Relay,Connector.Our parts cover such applications as commercial,industrial, and automotives areas.

We are looking forward to setting up business relationship with you and hope to provide you with the best service and solution. Let us make a better world for our industry!



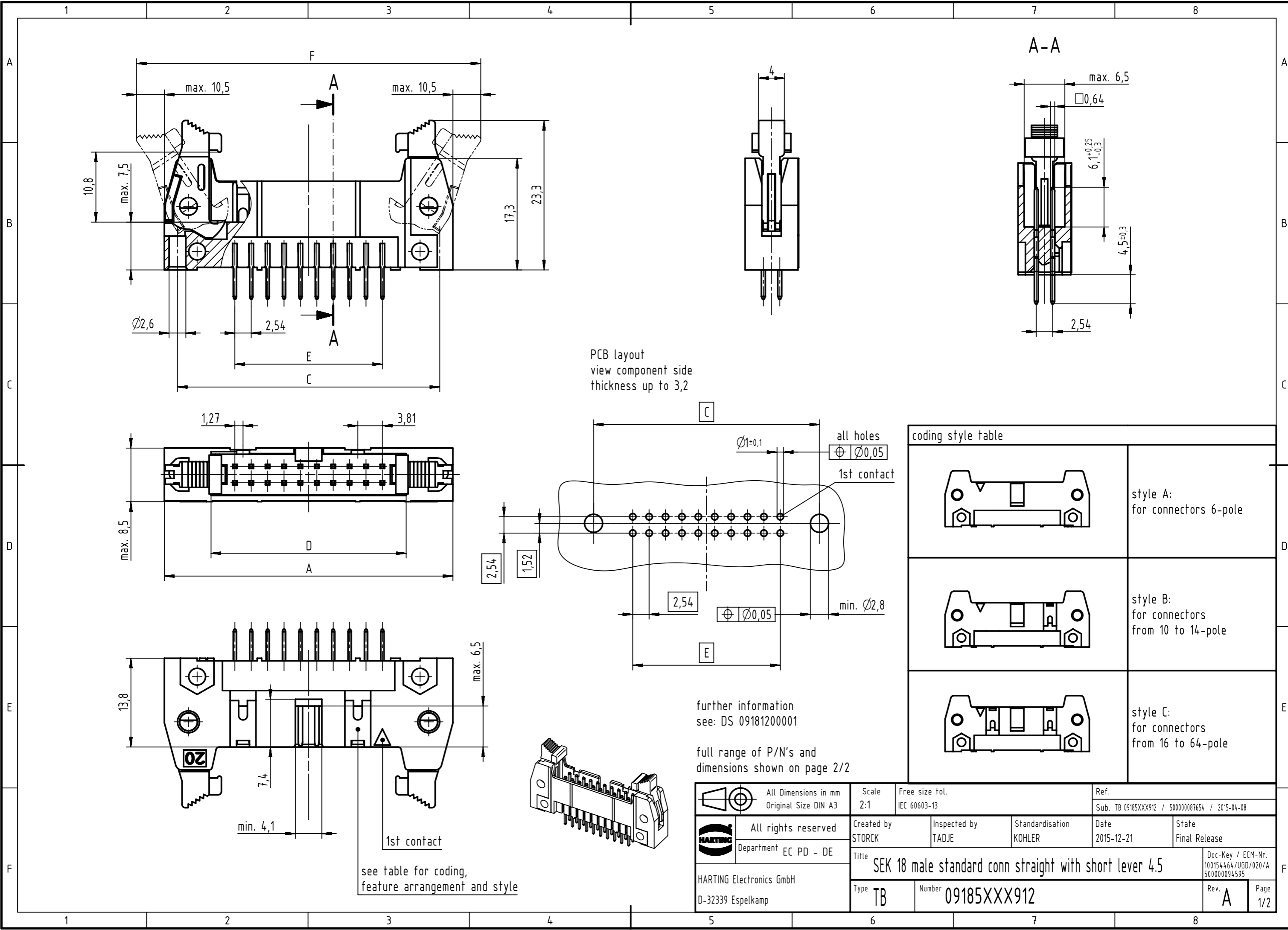
## Contact us

Tel: +86-755-8981 8866 Fax: +86-755-8427 6832

Email & Skype: info@chipsmall.com Web: www.chipsmall.com


Address: A1208, Overseas Decoration Building, #122 Zhenhua RD., Futian, Shenzhen, China





	All Dimensions in mm Original Size DIN A3	Scale 2:1	Free size tol. IEC 60603-13	Ref. Sub. TB 09185XXX912 / 500000087654 / 2015-04-08
	All rights reserved Department EC PD - DE	Created by STORCK	Inspected by TADJE	Standardisation KOHLER
HARTING Electronics GmbH D-32339 Espelkamp	Title SEK 18 male standard conn straight with short lever 4.5		Date 2015-12-21	State Final Release
	Type TB	Number 09185XXX912	Doc-Key / ECM-Nr. 100154464/UGD/020/A 50000094595	Rev. A Page 1/2

no. of contacts	performance level			insulator colour	dimensions				
	PL3	PL2	S4		A max.	C	D	E	F
	part number	part number	part number						
06	09 18 506 7912	09 18 506 6912	09 18 506 5912	grey	27,2	22,86	12,45	2,54 x 2 = 5,08	36,9
10	09 18 510 7912	09 18 510 6912	09 18 510 5912		32,3	27,94	17,53	2,54 x 4 = 10,16	42,0
14	09 18 514 7912	09 18 514 6912	09 18 514 5912		37,4	33,02	22,61	2,54 x 6 = 15,24	47,1
16	09 18 516 7912	09 18 516 6912	09 18 516 5912		39,9	35,56	25,15	2,54 x 7 = 17,78	49,6
20	09 18 520 7912	09 18 520 6912	09 18 520 5912		45,0	40,64	30,23	2,54 x 9 = 22,86	54,7
24	09 18 524 7912	09 18 524 6912	09 18 524 5912		50,1	45,72	35,91	2,54 x 11 = 27,94	59,8
26	09 18 526 7912	09 18 526 6912	09 18 526 5912		52,6	48,26	37,85	2,54 x 12 = 30,48	62,3
30	09 18 530 7912	09 18 530 6912	09 18 530 5912		58,0	53,34	43,83	2,54 x 14 = 35,56	68,2
34	09 18 534 7912	09 18 534 6912	09 18 534 5912		62,8	58,42	48,01	2,54 x 16 = 40,64	72,5
40	09 18 540 7912	09 18 540 6912	09 18 540 5912		70,4	66,04	55,63	2,54 x 19 = 48,26	80,1
50	09 18 550 7912	09 18 550 6912	09 18 550 5912		83,1	78,74	68,33	2,54 x 24 = 60,96	92,8
60	09 18 560 7912	09 18 560 6912	09 18 560 5912		95,8	91,44	81,03	2,54 x 29 = 73,66	105,5
64	09 18 564 7912	09 18 564 6912	09 18 564 5912		100,9	96,52	86,11	2,54 x 31 = 78,74	110,6
06	09 18 506 7912 001	09 18 506 6912 001	09 18 506 5912 001		black	27,2	22,86	12,45	2,54 x 2 = 5,08
10	09 18 510 7912 001	09 18 510 6912 001	09 18 510 5912 001	32,3		27,94	17,53	2,54 x 4 = 10,16	42,0
14	09 18 514 7912 001	09 18 514 6912 001	09 18 514 5912 001	37,4		33,02	22,61	2,54 x 6 = 15,24	47,1
16	09 18 516 7912 001	09 18 516 6912 001	09 18 516 5912 001	39,9		35,56	25,15	2,54 x 7 = 17,78	49,6
20	09 18 520 7912 001	09 18 520 6912 001	09 18 520 5912 001	45,0		40,64	30,23	2,54 x 9 = 22,86	54,7
24	09 18 524 7912 001	09 18 524 6912 001	09 18 524 5912 001	50,1		45,72	35,91	2,54 x 11 = 27,94	59,8
26	09 18 526 7912 001	09 18 526 6912 001	09 18 526 5912 001	52,6		48,26	37,85	2,54 x 12 = 30,48	62,3
30	09 18 530 7912 001	09 18 530 6912 001	09 18 530 5912 001	58,0		53,34	43,83	2,54 x 14 = 35,56	68,2
34	09 18 534 7912 001	09 18 534 6912 001	09 18 534 5912 001	62,8		58,42	48,01	2,54 x 16 = 40,64	72,5
40	09 18 540 7912 001	09 18 540 6912 001	09 18 540 5912 001	70,4		66,04	55,63	2,54 x 19 = 48,26	80,1
50	09 18 550 7912 001	09 18 550 6912 001	09 18 550 5912 001	83,1		78,74	68,33	2,54 x 24 = 60,96	92,8
60	09 18 560 7912 001	09 18 560 6912 001	09 18 560 5912 001	95,8		91,44	81,03	2,54 x 29 = 73,66	105,5
64	09 18 564 7912 001	09 18 564 6912 001	09 18 564 5912 001	100,9		96,52	86,11	2,54 x 31 = 78,74	110,6

	All rights reserved Department EC PD - DE	Created by STORCK	Inspected by TADJE	Standardisation KOHLER	Date 2015-12-21	State Final Release	Ref. Sub. TB 09185XXX912 / 500000087654 / 2015-04-08
	HARTING Electronics GmbH D-32339 Espelkamp	Title SEK 18 male standard conn straight with short lever 4.5			Doc-Key / ECM-Nr. 100154464/UGD/020/A 500000094595		Rev. <b>A</b>