



Chipsmall Limited consists of a professional team with an average of over 10 year of expertise in the distribution of electronic components. Based in Hongkong, we have already established firm and mutual-benefit business relationships with customers from,Europe,America and south Asia,supplying obsolete and hard-to-find components to meet their specific needs.

With the principle of “Quality Parts,Customers Priority,Honest Operation,and Considerate Service”,our business mainly focus on the distribution of electronic components. Line cards we deal with include Microchip,ALPS,ROHM,Xilinx,Pulse,ON,Everlight and Freescale. Main products comprise IC,Modules,Potentiometer,IC Socket,Relay,Connector.Our parts cover such applications as commercial,industrial, and automotives areas.

We are looking forward to setting up business relationship with you and hope to provide you with the best service and solution. Let us make a better world for our industry!



## Contact us

Tel: +86-755-8981 8866 Fax: +86-755-8427 6832

Email & Skype: [info@chipsmall.com](mailto:info@chipsmall.com) Web: [www.chipsmall.com](http://www.chipsmall.com)

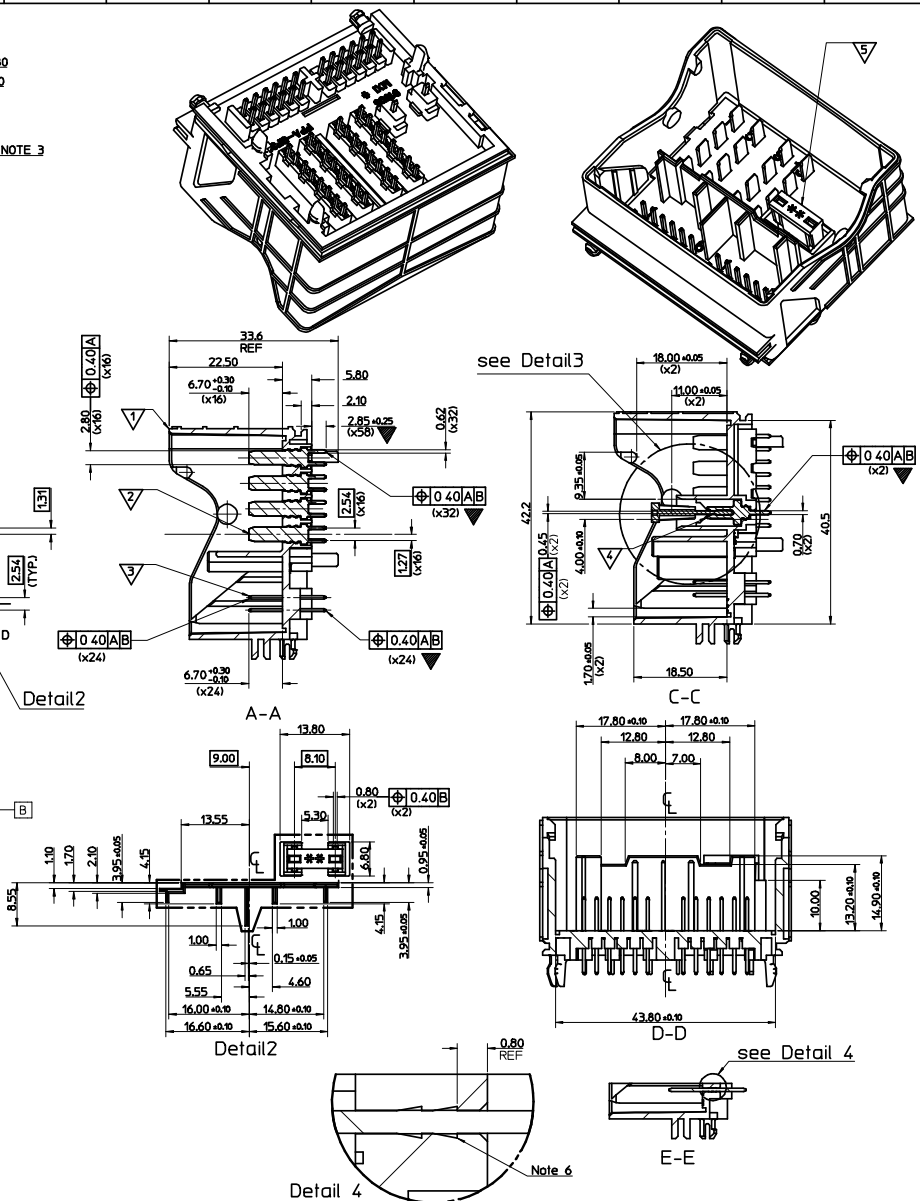
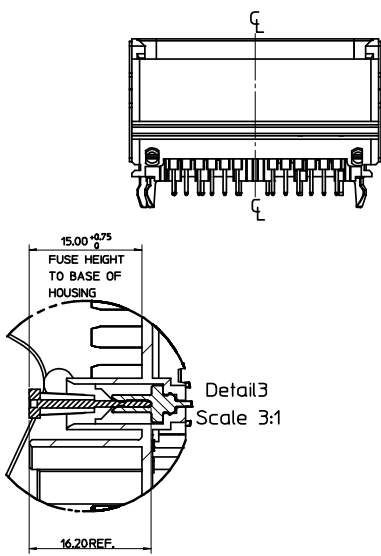
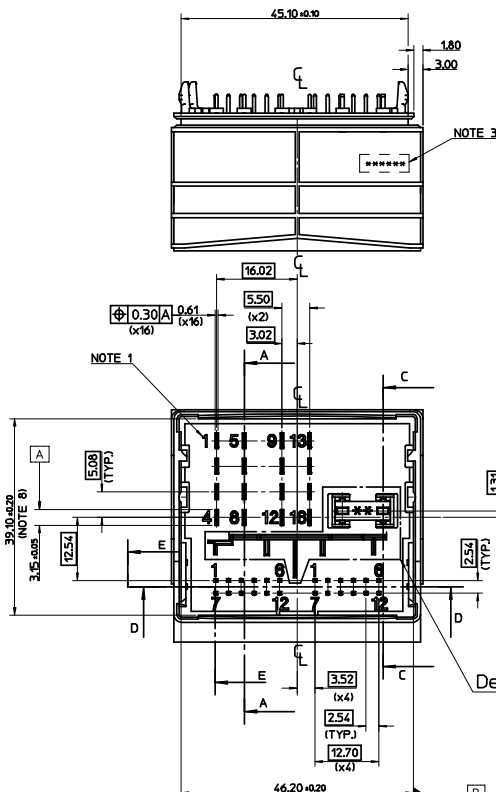
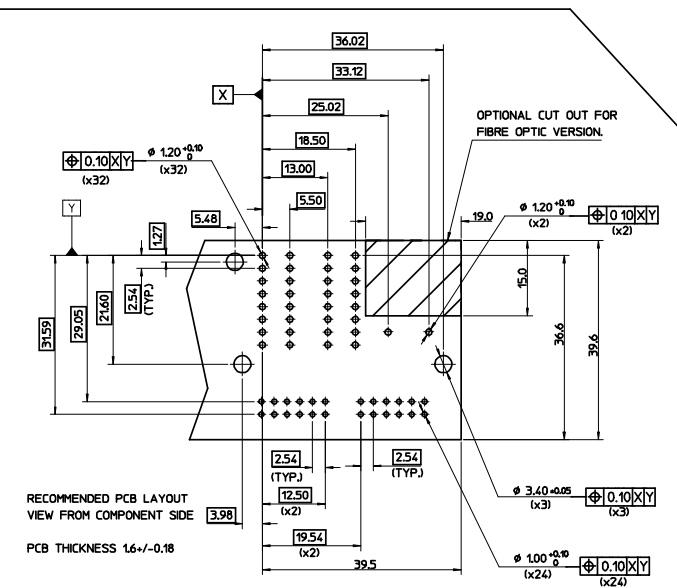
Address: A1208, Overseas Decoration Building, #122 Zhenhua RD., Futian, Shenzhen, China



- 1) INTERNAL NUMBERING RECESSED BELOW THE SURFACE.
- 2) EXTERNAL MOLEX AND CUSTOMER IDENTIFICATION 0.2 PROUD OF SURFACE.
- 3) PART TRACABILITY MARKING IN THIS AREA. FORMAT IS:

HOUR	DAY 1-7 (1=MONDAY)	WEEK	YEAR
**	*	**	*

- 4) FOR THE PRODUCT SPECIFICATION REFER TO DOC: PS-91905-001.  
5) FOR THE PACKAGING SPECIFICATION REFER TO APPLICABLE DOC:  
PK-91905-001.  
6) PIN BARB ORIENTATION AS SHOWN.  
7) CLIP TO SUIT 3.35 +/- 0.05 DIA HOLE  
8) MINIMUM DIMENSION ALLOWABLE POST REFLOW = 38.70MIN.



ORIGINAL RELEASE: EC NO: E2008-0359 DRAWN BY: 2008/02/04 CHKD: 2008/02/05 APPR: WALLACE	QUALITY SYMBOLS	GENERAL TOLERANCES (UNLESS SPECIFIED)		DIMENSION STYLE MM ONLY		SCALE 2:1	DESIGN UNITS METRIC	THIRD ANGLE PROJECTION	
	▽=4 ▽=0		mm	INCH	DRAWN BY	DATE	TITLE J.BOX MOST STR		
		4 PLACES	± .005	± .0005	S MCMAHON	19-07-2007			
		3 PLACES	± .005	± .0005	CHECKED BY	DATE			
		2 PLACES	± .015	± .001	N MCNAMARA	20-07-2007			
		1 PLACE	± .025	± .002	APPROVED BY	DATE			
			ANGULAR ± 2°		B MAGUIRE	20-07-2007	MOLEX INCORPORATED		
			MATERIAL NO.		DOCUMENT NO.				
			DRAFT WHERE APPLICABLE		See Sheet 2		SD-91905-002		
			MUST REMAIN WITHIN DIMENSIONS		SIZE Δ 1	THIS DRAWING CONTAINS INFORMATION THAT IS PROPRIETARY TO MOLEX INCORPORATED AND SHOULD NOT BE RE-USED WITHOUT WRITTEN PERMISSION			

			Assembly Part No: 91905-1010	Suitable for INTRUSIVE REFLOW Process
REF NO	DESCRIPTION	QTY	MADE FROM	REMARKS
▽	HOUSING	1	GRIVORY(PPA), GLASS FILLED	COLOUR = BLACK
▽	SPADE TERMINAL	16	0.61 REF THICK BRASS	0.001-0.003mm Bright TIN on first 5mm of Contact End 0.003-0.005mm Bright TIN on Remainder Undercoat of 0.00127-0.0022mm NICKEL Overall
▽	SQUARE TERMINAL	24	0.61 REF SQUARE BRASS	
▽	FUSE TERMINAL	2	0.80 REF THICK PHOSPHOR BRONZE	0.003-0.005um TIN BRIGHT OVER Undercoat of 0.00127-0.0022mm NICKEL OVERALL
▽	FUSE (10A) **	1	CU58F DIN 1787 OR EQUIVALENT	PLATED 0.004mm TIN

			Assembly Part No: 91905-1015	Suitable for INTRUSIVE REFLOW Process
REF NO	DESCRIPTION	QTY	MADE FROM	REMARKS
▽	HOUSING	1	GRIVORY(PPA), GLASS FILLED	COLOUR = BLACK
▽	SPADE TERMINAL	16	0.61 REF THICK BRASS	0.001-0.003mm Bright TIN on first 5mm of Contact End 0.003-0.005mm Bright TIN on Remainder Undercoat of 0.00127-0.0022mm NICKEL Overall
▽	SQUARE TERMINAL	24	0.61 REF SQUARE BRASS	
▽	FUSE TERMINAL	2	0.80 REF THICK PHOSPHOR BRONZE	0.003-0.005um TIN BRIGHT OVER Undercoat of 0.00127-0.0022mm NICKEL OVERALL
▽	FUSE	0	CU58F DIN 1787 OR EQUIVALENT	PLATED 0.004mm TIN

			Assembly Part No: 91905-1020	Suitable for INTRUSIVE REFLOW Process
REF NO	DESCRIPTION	QTY	MADE FROM	REMARKS
▽	HOUSING	1	GRIVORY(PPA), GLASS FILLED	COLOUR = BLACK
▽	SPADE TERMINAL	16	0.61 REF THICK BRASS	0.001-0.003mm Bright TIN on first 5mm of Contact End 0.003-0.005mm Bright TIN on Remainder Undercoat of 0.00127-0.0022mm NICKEL Overall
▽	SQUARE TERMINAL	24	0.61 REF SQUARE BRASS	
▽	FUSE TERMINAL	2	0.80 REF THICK PHOSPHOR BRONZE	0.003-0.005um TIN BRIGHT OVER Undercoat of 0.00127-0.0022mm NICKEL OVERALL
▽	FUSE (15A) **	1	CU58F DIN 1787 OR EQUIVALENT	PLATED 0.004mm TIN

NOTE: \*\* THE FUSE COMPONENT IS NOT CAPABLE OF GOING THROUGH THE REFLOW PROCESS. IF THE JUNCTION BOX PRODUCT IS BEING PROCESSED THROUGH THE REFLOW OVEN THE FUSE COMPONENT IS TO BE REMOVED AND INSERTED AFTER REFLOW.

See Sheet 1 EC NO: E2008-0359 DRAWN: BYRNES 2008/02/01 CHKD: 2008/02/05 APPR: J WALLACE 2008/02/05 REV: A	QUALITY SYMBOLS ▽=0 ▽=0	GENERAL TOLERANCES (UNLESS SPECIFIED)		DIMENSION STYLE MM ONLY		SCALE 2:1	DESIGN UNITS METRIC	THIRD ANGLE PROJECTION		
			mm	INCH	DRAWN BY S MCMAHON	DATE 19-07-2007	TITLE J.BOX MOST STR			
		4 PLACES ± ---	± ---	± ---	CHECKED BY N MCNAMARA	DATE 20-07-2007				
		3 PLACES ± ---	± ---	± ---	APPROVED BY B MAGUIRE	DATE 20-07-2007	MATERIAL NO. SD-91905-002			
2 PLACES ± 0.15	± ---	± ---	SHEET NO. 2 OF 2							
1 PLACE ± 0.25		± ---	DRAFT WHERE APPLICABLE MUST REMAIN WITHIN DIMENSIONS		THIS DRAWING CONTAINS INFORMATION THAT IS PROPRIETARY TO MOLEX INCORPORATED AND SHOULD NOT BE USED WITHOUT WRITTEN PERMISSION					