



Chipsmall Limited consists of a professional team with an average of over 10 year of expertise in the distribution of electronic components. Based in Hongkong, we have already established firm and mutual-benefit business relationships with customers from,Europe,America and south Asia,supplying obsolete and hard-to-find components to meet their specific needs.

With the principle of "Quality Parts,Customers Priority,Honest Operation,and Considerate Service",our business mainly focus on the distribution of electronic components. Line cards we deal with include Microchip,ALPS,ROHM,Xilinx,Pulse,ON,Everlight and Freescale. Main products comprise IC,Modules,Potentiometer,IC Socket,Relay,Connector.Our parts cover such applications as commercial,industrial, and automotives areas.

We are looking forward to setting up business relationship with you and hope to provide you with the best service and solution. Let us make a better world for our industry!



Contact us

Tel: +86-755-8981 8866 Fax: +86-755-8427 6832

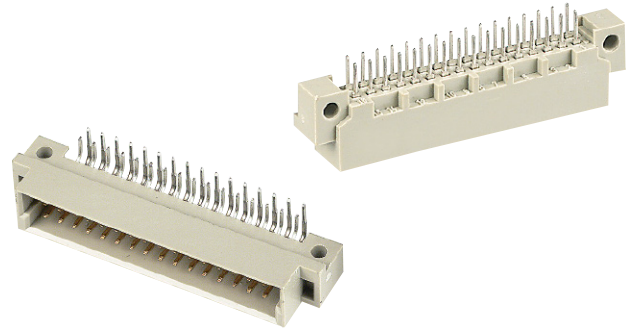
Email & Skype: info@chipsmall.com Web: www.chipsmall.com

Address: A1208, Overseas Decoration Building, #122 Zhenhua RD., Futian, Shenzhen, China



Number of contacts

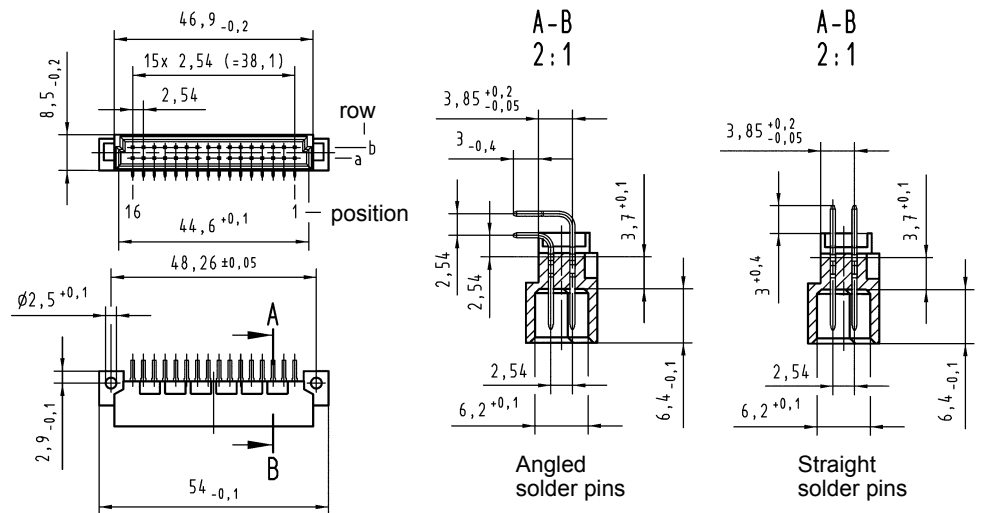
32, 16



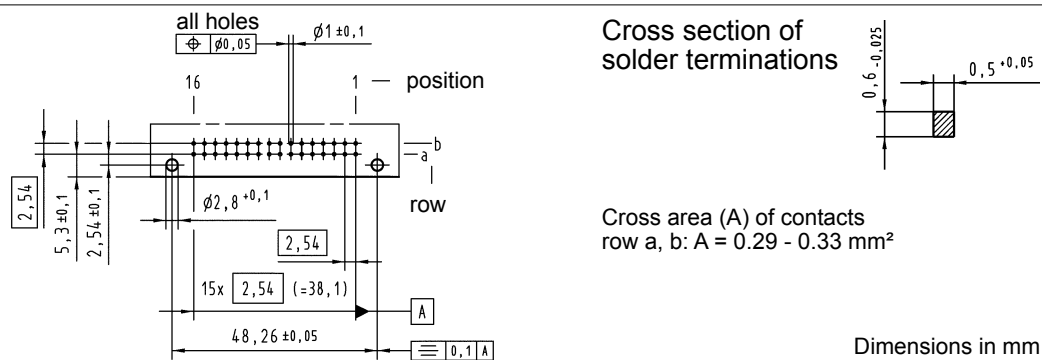
Male connectors

Identification	No. of contacts	Contact arrangement	Part number	Performance levels according to IEC 60603-2. Explanation chapter 00		
				3	2	1
Male connector with angled solder pins	32		09 22 132 7921	09 22 132 6921 09 22 132 6921 222 ^{f)} 09 22 332 6921 ^{b)}	09 22 132 2921	
	16		09 22 132 7922	09 22 132 6922	09 22 132 2922	
30 + 2 [▲]			09 22 132 6951			
Male connector with straight solder pins	32		09 22 132 7921	09 22 132 6921 09 22 132 6921 222 ^{f)} 09 22 332 6921 ^{b)}	09 22 132 2921	
	30 + 2 [▲]			09 22 132 6918 ^{d)}		

Dimensions



Board drillings
Mounting side



01
16

▲ Male connectors with 2 leading contacts [(0.8 mm) pos. a1 and a16]. Lagging pins on request.

b) Connectors with snap-in clips see chapter 00

d) CTI > 400

f) Railway classification NFF 16-101, Smoke index: F1, Flammability class: I2

Other contact arrangements on request

Dimensions in mm