



Chipsmall Limited consists of a professional team with an average of over 10 year of expertise in the distribution of electronic components. Based in Hongkong, we have already established firm and mutual-benefit business relationships with customers from,Europe,America and south Asia,supplying obsolete and hard-to-find components to meet their specific needs.

With the principle of “Quality Parts,Customers Priority,Honest Operation,and Considerate Service”,our business mainly focus on the distribution of electronic components. Line cards we deal with include Microchip,ALPS,ROHM,Xilinx,Pulse,ON,Everlight and Freescale. Main products comprise IC,Modules,Potentiometer,IC Socket,Relay,Connector.Our parts cover such applications as commercial,industrial, and automotives areas.

We are looking forward to setting up business relationship with you and hope to provide you with the best service and solution. Let us make a better world for our industry!



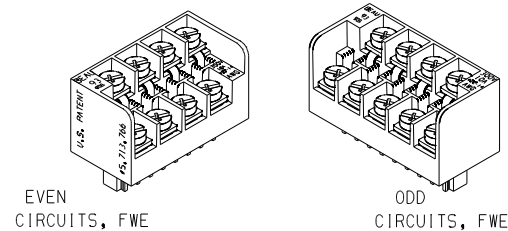
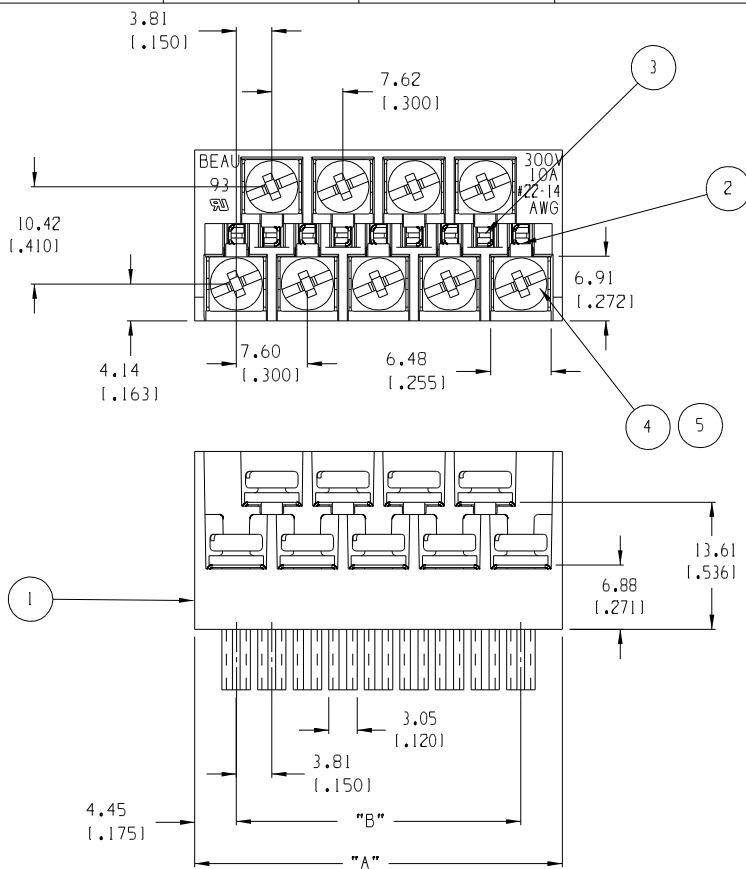
Contact us

Tel: +86-755-8981 8866 Fax: +86-755-8427 6832

Email & Skype: info@chipsmall.com Web: www.chipsmall.com

Address: A1208, Overseas Decoration Building, #122 Zhenhua RD., Futian, Shenzhen, China





ISO VIEW SCALE 1:1

NUMBER OF CIRCUITS	"A" DIM.	"B" DIM.	MATERIAL NUMBER
03	16.51 (1.650)	7.62 (1.300)	399300303
04	20.32 (1.800)	11.43 (1.450)	399300304
05	24.13 (1.950)	15.24 (1.600)	399300305
06	27.94 (1.100)	19.05 (1.750)	399300306
07	31.75 (1.250)	22.86 (1.900)	399300307
08	35.56 (1.400)	26.67 (1.050)	399300308
09	39.37 (1.550)	30.48 (1.200)	399300309
10	43.18 (1.700)	34.29 (1.350)	399300310
11	46.99 (1.850)	38.10 (1.500)	399300311
12	50.80 (2.000)	41.91 (1.650)	399300312
13	54.61 (2.150)	45.72 (1.800)	399300313
14	58.42 (2.300)	49.53 (1.950)	399300314
15	62.23 (2.450)	53.34 (2.100)	399300315
16	66.04 (2.600)	57.15 (2.250)	399300316
17	69.85 (2.750)	60.96 (2.400)	399300317
18	73.66 (2.900)	64.77 (2.550)	399300318
19	77.47 (3.050)	68.58 (2.700)	399300319
20	81.28 (3.200)	72.39 (2.850)	399300320
21	85.09 (3.350)	76.20 (3.000)	399300321

- NOTES:
1. MATERIAL: SEE TABLE
 2. FINISHES: SEE TABLE
 3. PRODUCT SPECIFICATION: NOT REQUIRED
 4. INCH DIMS ARE SHOWN IN PARENTHESIS (XXX)
 5. "XX" REFERS TO THE NUMBER OF CIRCUITS
 6. MATES WITH 3.81MM HEADERS

ITEM	QTY. (EVEN NO. OF CIRCUITS)	QTY. (ODD NO. OF CIRCUITS)	DESCRIPTION	MATERIAL	FINISH
5	"XX"	"XX"	SCREW M3 SQUARE WASHER	STEEL	ZINC CHROMATE
4	"XX"	"XX"	NUT HEX M3	STEEL	ZINC CHROMATE
3	XX/2	(XX-1)/2	TERMINAL LONG	COPPER	TIN
2	XX/2	(XX+1)/2	TERMINAL SHORT	COPPER	TIN
1	1	1	BODY FWE 3.81	THERMOPLASTIC	BLACK

EC NO. 11648 DRWN: RK 8-23-05 CHK: CH*K APPR:	DESCRIPTION MAJOR CRITICAL SPC S:	QUALITY SYMBOLS	GENERAL TOLERANCES: (UNLESS SPECIFIED)	SCALE 2:1	DESIGN UNITS <input type="checkbox"/> mm <input checked="" type="checkbox"/> INCH	THIRD ANGLE PROJECTION	PROJECT NO. - - DIMENSIONS: <input checked="" type="checkbox"/> mm <input type="checkbox"/> INCH <input type="checkbox"/> mm ONLY	SHEET REV REVISE ON CAD ONLY
		DRAWN BY & DATE J. FARMER 12-02-04	CHECKED BY & DATE R. KEMP 12-02-04	APPROVED BY & DATE GHR 12-02-04	CAD FILENAME 9309XX.PRT	MATERIAL NO. SEE CHART	DRAWING NO. SD-39930-004	SHEET NO. 1 OF 1
		TITLE: PLUG, FWE, 3.81MM EUROMATE ASY - C			MOLEX INCORPORATED			THIS DRAWING CONTAINS INFORMATION THAT IS PROPRIETARY TO MOLEX INCORPORATED AND SHOULD NOT BE USED WITHOUT WRITTEN PERMISSION.
		DRAFT WHERE APPLICABLE MUST REMAIN WITHIN DIMENSIONS			ANGULAR: ±2°			SIZE B