



Chipsmall Limited consists of a professional team with an average of over 10 year of expertise in the distribution of electronic components. Based in Hongkong, we have already established firm and mutual-benefit business relationships with customers from,Europe,America and south Asia,supplying obsolete and hard-to-find components to meet their specific needs.

With the principle of "Quality Parts,Customers Priority,Honest Operation,and Considerate Service",our business mainly focus on the distribution of electronic components. Line cards we deal with include Microchip,ALPS,ROHM,Xilinx,Pulse,ON,Everlight and Freescale. Main products comprise IC,Modules,Potentiometer,IC Socket,Relay,Connector.Our parts cover such applications as commercial,industrial, and automotives areas.

We are looking forward to setting up business relationship with you and hope to provide you with the best service and solution. Let us make a better world for our industry!



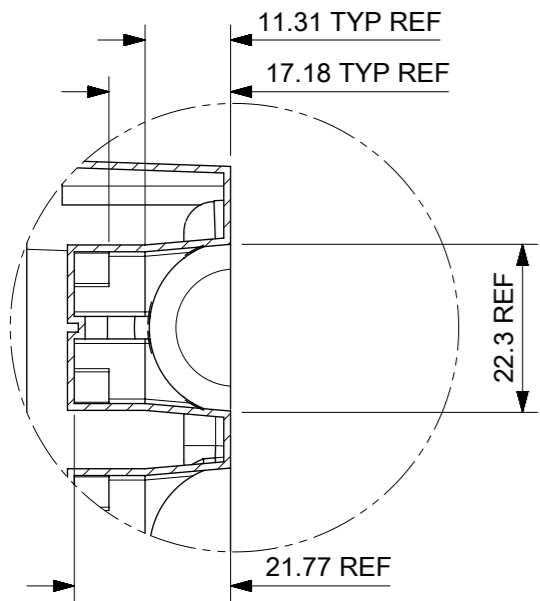
Contact us

Tel: +86-755-8981 8866 Fax: +86-755-8427 6832

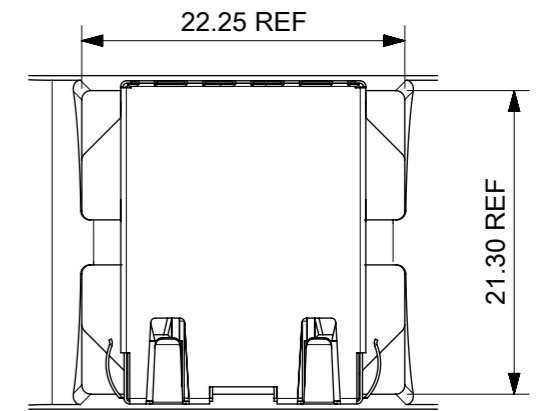
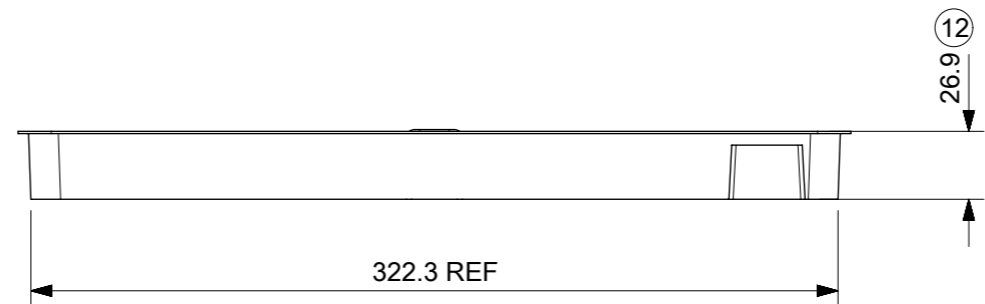
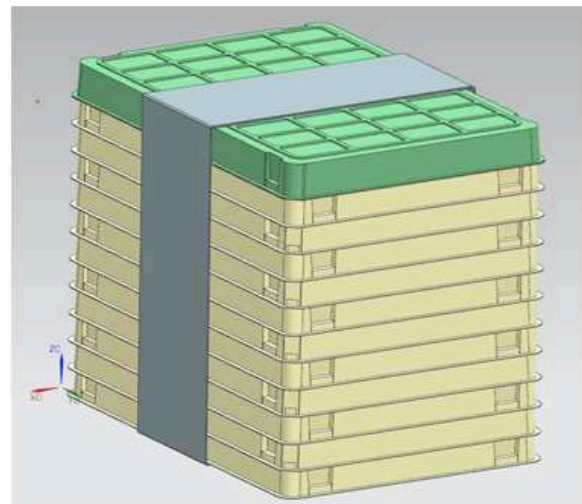
Email & Skype: info@chipsmall.com Web: www.chipsmall.com

Address: A1208, Overseas Decoration Building, #122 Zhenhua RD., Futian, Shenzhen, China

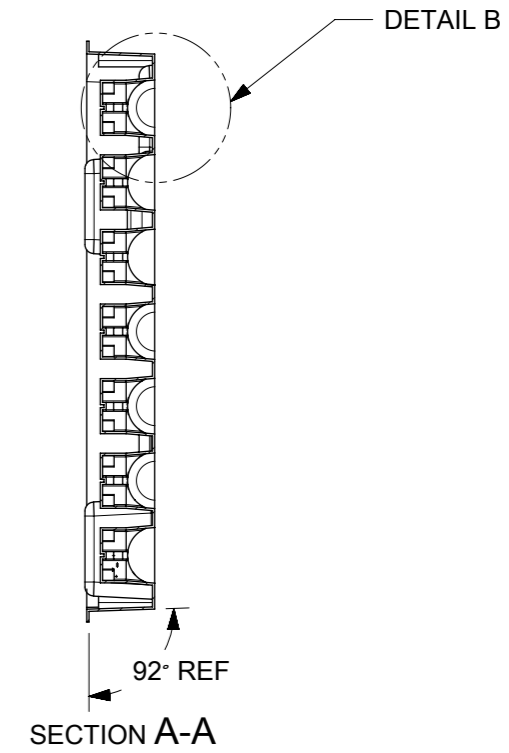
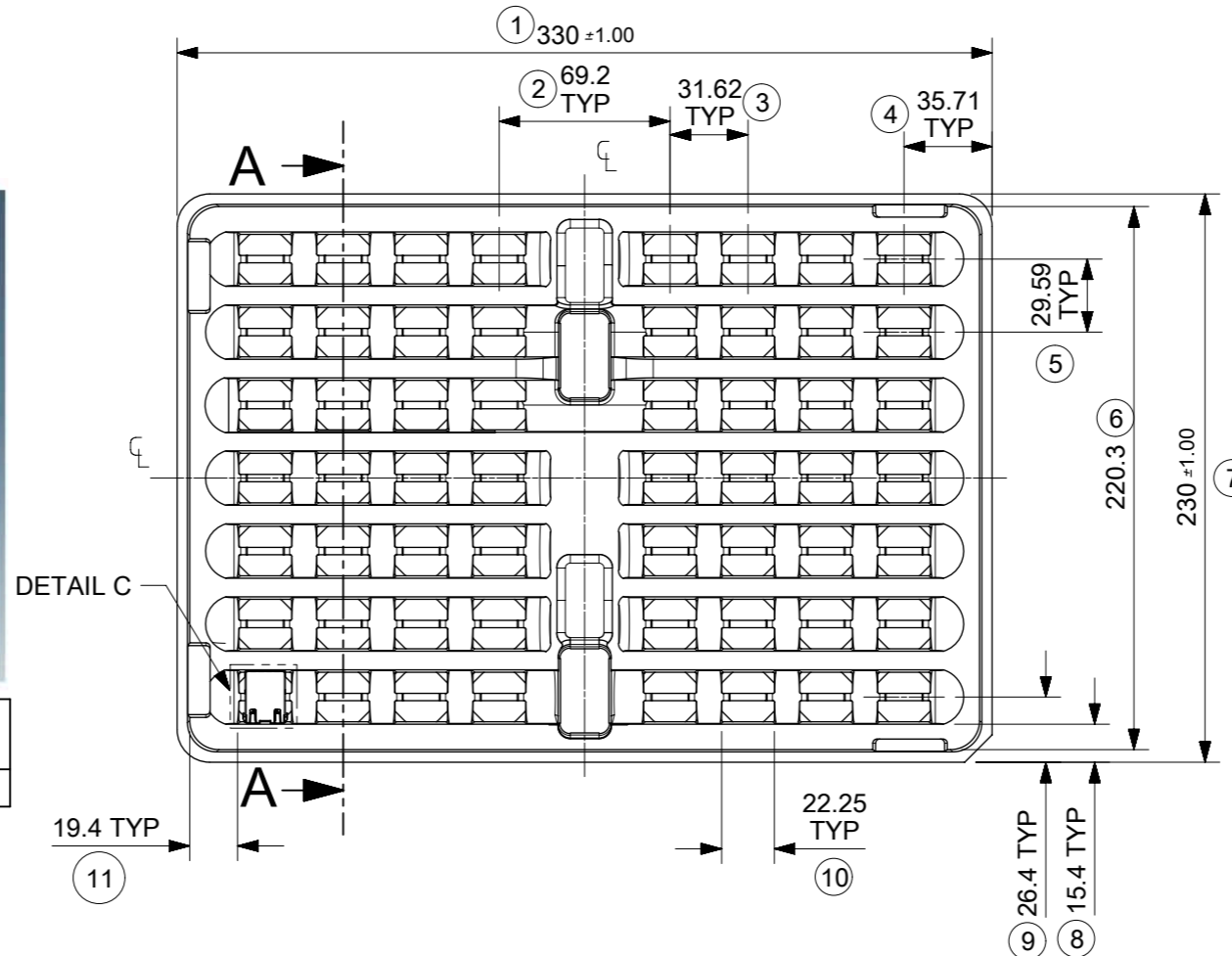




DETAIL B



DETAIL C
SCALE 2:1



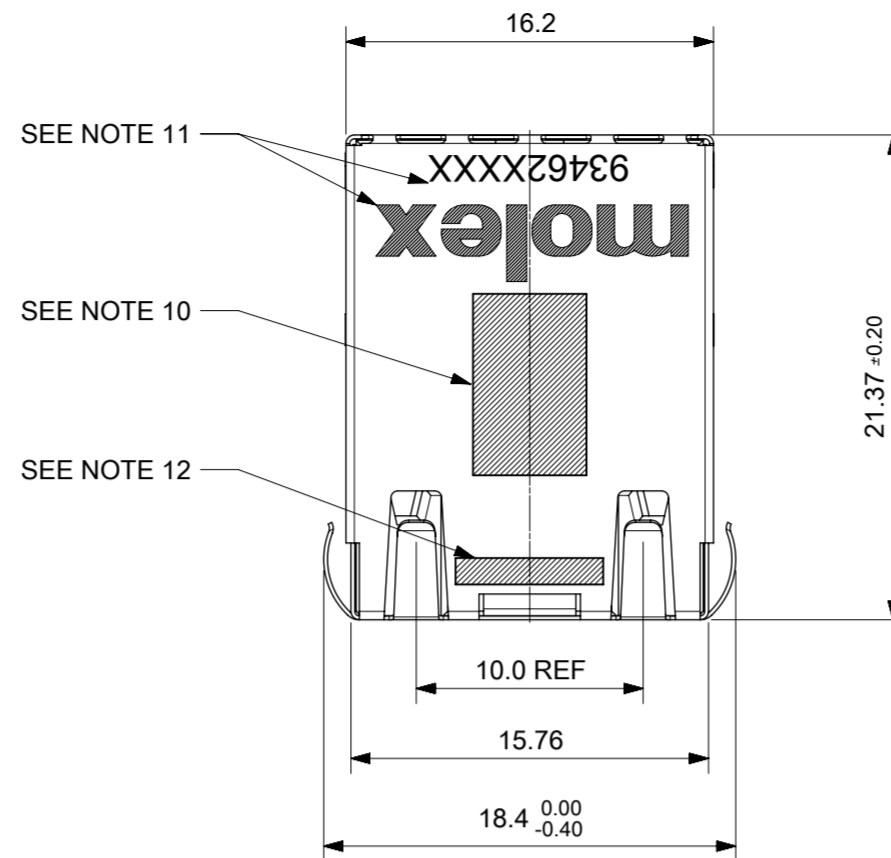
| VERSION | QUANTITY PER TRAY | QUANTITY OF TRAYS PER BOX | QUANTITY PER BOX | QUANTITY PER PALLET |
|---------------|-------------------|---------------------------|------------------|---------------------|
| 0.85" VERSION | 56 | 12 | 672 | 18,144 |

- NOTES:
- MATERIAL: PETA ANTISTATIC
 - THICKNESS: 0.9mm ±0.05mm
 - COLOUR: CLEAR
 - BOW 2mm MAXIMUM PER 330mm
 - TWIST 2mm MAXIMUM PER 330mm
 - TRAY PART NO. AND RECYCLE LOGO TO BE CLEARLY MARKED ON TRAY
RECYCLE LOGO SHOULD BE APPROPRIATE TO MATERIAL USED
 - WHERE RELEVANT, DIMENSIONS SHOULD BE SYMMETRICAL ABOUT THE CENTRELINE
 - GENERAL PROFILE TOLERANCE $\overline{\cup}$ 0.40 ON NON DIMENSIONED FEATURES

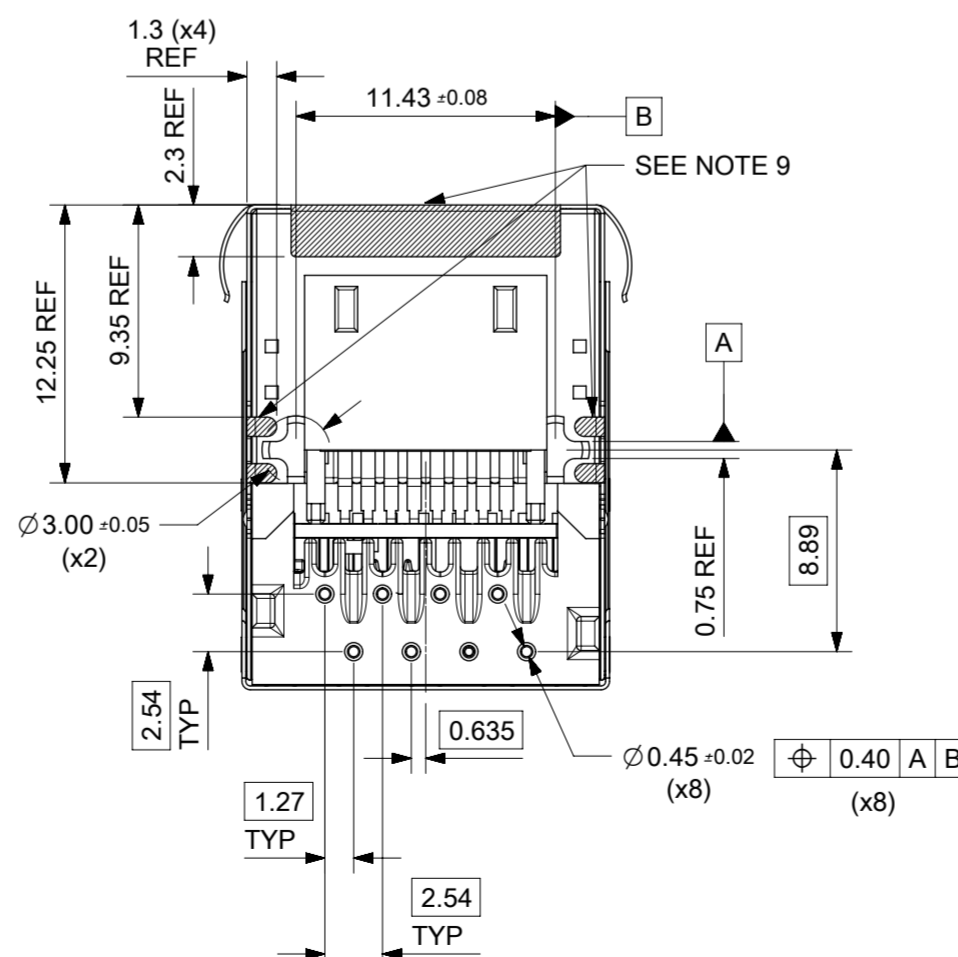
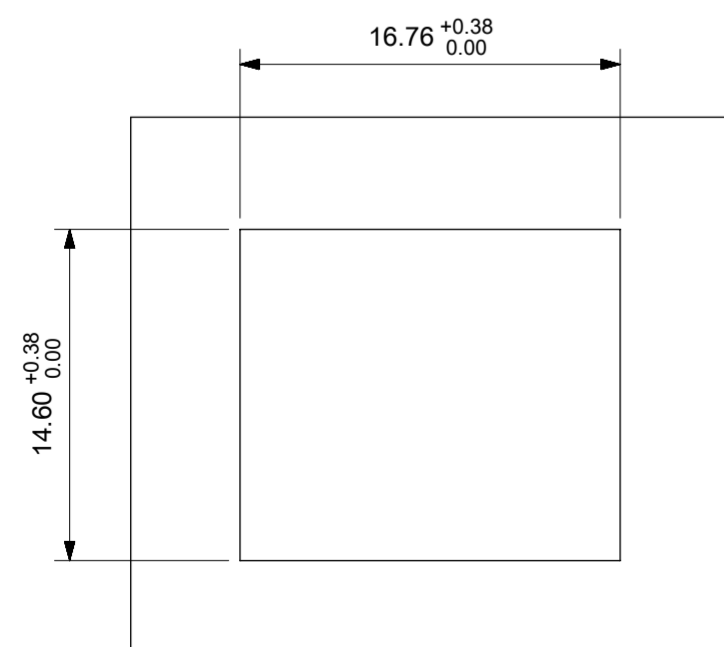
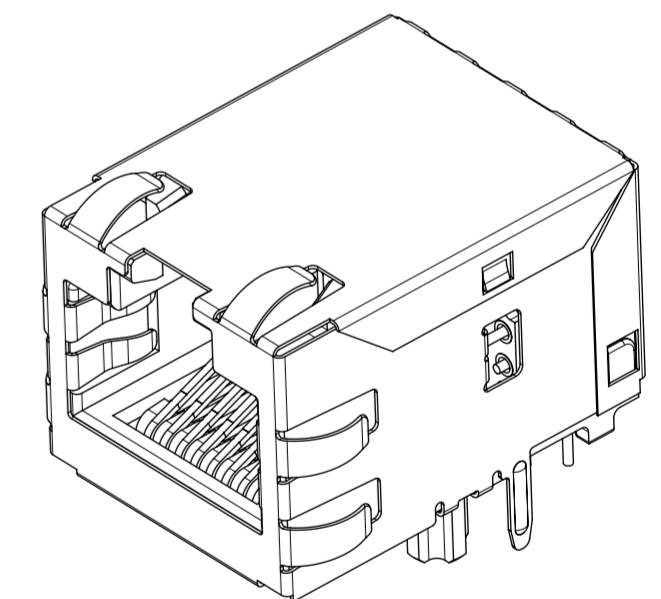
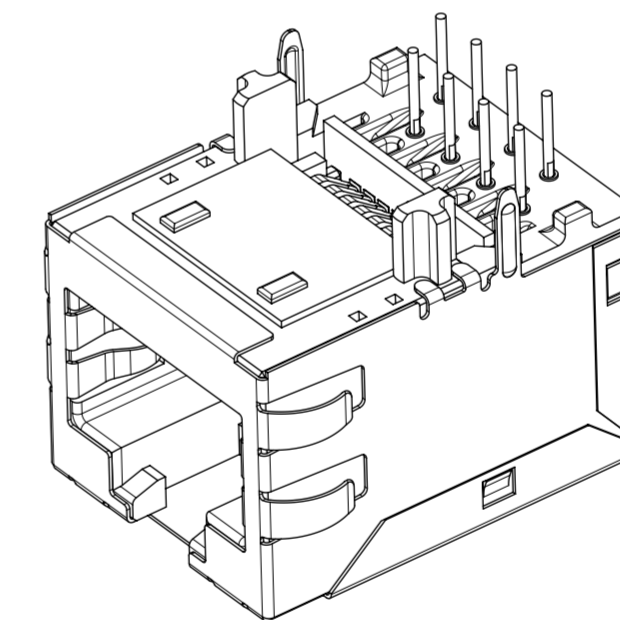
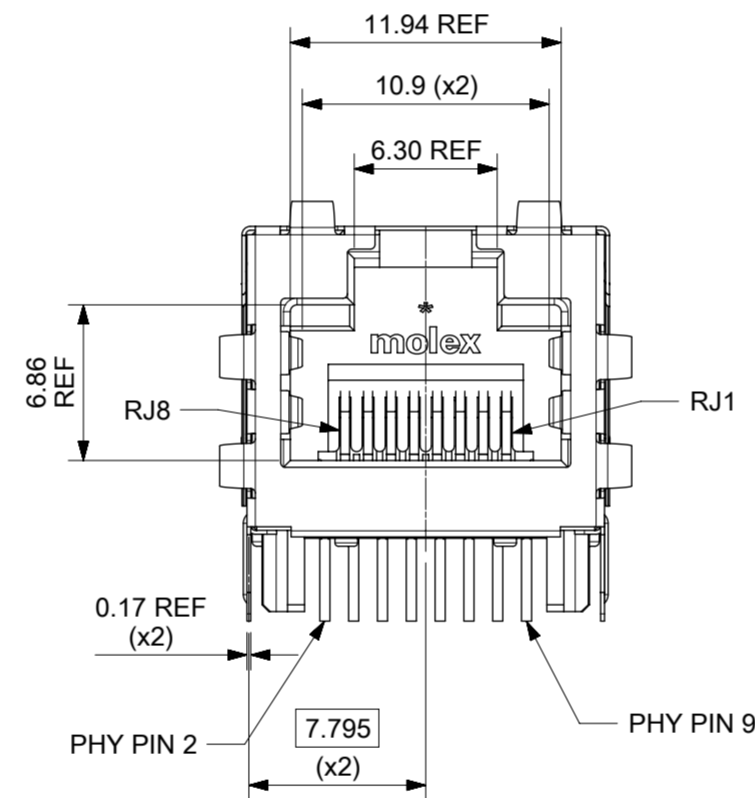
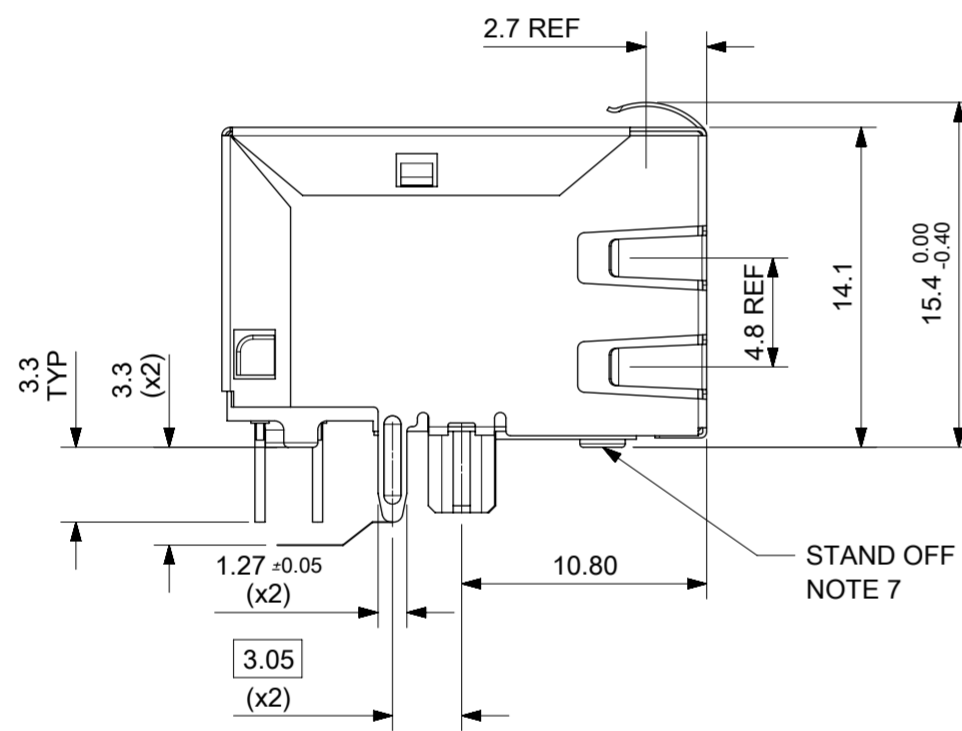
LAST INSPECTION NUMBER USED: 12

| | | | | | | | | | | | | | |
|---|--|---|---------------------------|-------------------------------------|---------------------------|-----------------------------------|------------------------|---------------------------------|--|--|--|---|--|
| THIS DRAWING CONTAINS INFORMATION THAT IS PROPRIETARY TO MOLEX ELECTRONIC TECHNOLOGIES, LLC AND SHOULD NOT BE USED WITHOUT WRITTEN PERMISSION | | | | | | | | | | | | | |
| QUALITY SYMBOLS ∇_A = 0 ∇_E = 0 ∇_F = 0 \blacktriangledown = 0 ∇_C = 0 \boxtimes = 0 \blacksquare = 0 ∇_V = 0 | ORIGINAL RELEASE EC NO: 109024 DRWN: DALLEN01 CHK'D: DALLEN01 APPR: STGRIFFIN | GENERAL TOLERANCES (UNLESS SPECIFIED) ANGULAR TOL ± 1.0 ° | | DIMENSION UNITS MM | SCALE 1:3 | | | | | | | | |
| | | 4 PLACES ± 3 PLACES ± 2 PLACES ± 0.2 1 PLACE ± 0.5 0 PLACES ± | DRWN BY KREILLY | | DATE 2016/05/06 | | | | | | | MXMAG STANDARD AND INVERTED TRAY | |
| | | DRAFT WHERE APPLICABLE MUST REMAIN WITHIN DIMENSIONS | | | | DRAWING SIZE A3 | THIRD ANGLE PROJECTION | PRODUCT CUSTOMER DRAWING | | | | | |
| | | SERIES 93462 | | MATERIAL NUMBER 990250150 | | CUSTOMER GENERAL MARKET | | | | | | | |
| DOCUMENT NUMBER 934620003 | | DOC TYPE PSD | DOC PART K | SHEET NUMBER 1 OF 1 | | | | | | | | | |

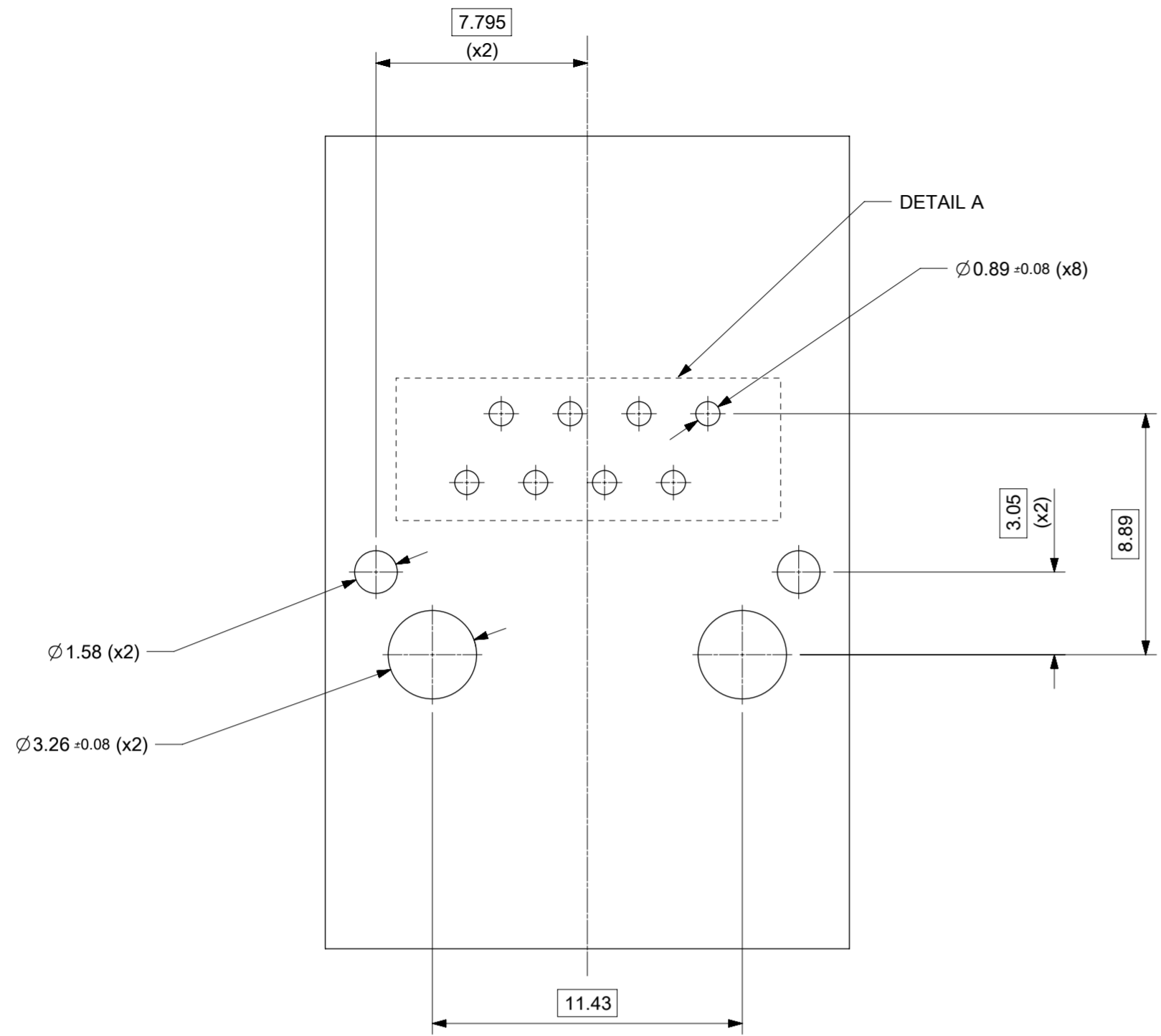
INVERTED PROFILE MAGNETIC JACK
FAST ETHERNET W/SHIELD TABS



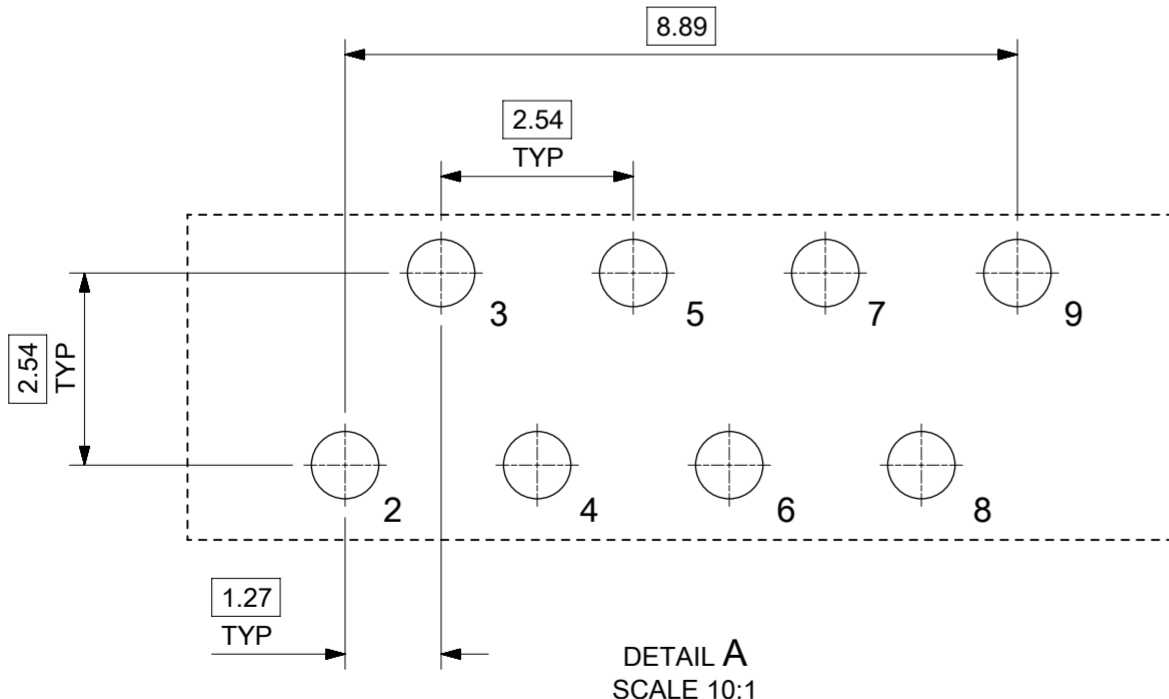
- NOTES:
- SHIELD MATERIAL: 0.17 mm THICK BRASS PRE-PLATED WITH NICKEL
SOLDER TABS POST DIPPED WITH MIN 1.27 μm TIN
 - HOUSING MATERIAL: LCP, BLACK, UL 94V-0
 - TERMINALS MATERIAL: PHOSPHOR BRONZE
RJ45 CONTACTS PLATING: BASE NICKEL PLATED WITH GOLD
FLASH OVER PALLADIUM NICKEL. REFER TO 934620001 PSP
PHY SOLDER TAILS: COPPER ALLOY
 - MATING INTERFACE ACCORDING TO IEC 60603-7 & TIA-1096-A
 - PRODUCT SPECIFICATION: 934620001 PSP
 - PACKAGING SPECIFICATION: 934620001 PSK - TRAY
 - STAND OFF TO SYSTEM BOARD 0.30 mm MIN
 - RECOMMENDED PCB THICKNESS: 1.57 mm
 - SHIELD: AVOID ROUTING TRACES
OR PLACING ANY VIAS BELOW THESE AREAS
 - AREA FOR PICK AND PLACE: 5.0 mm X 8.0 mm
 - INSCRIPTION MARKED BY LASER:
1st : MOLEX
2nd : P/N (SEE BOM)
 - INSCRIPTION MARKED BY LASER:
DATE CODE(DAY/WEEK/YEAR)
 - MATERIAL COMPLIANT TO RoHS DIRECTIVE 2002/95/EC



| | | | | | | | | | |
|--|------------|---------------------------------------|-----|-----------------|--------------------------|--|--|--|------|
| REVISED | | GENERAL TOLERANCES (UNLESS SPECIFIED) | | DIMENSION UNITS | SCALE | molex INV MX-MAG 4 CORE FE W/SHIELD TABS | | | |
| EC NO: 116686 | 2017/05/09 | mm | 3:1 | DRWN BY | | | | | DATE |
| DRWN: KREILLY | 2017/09/12 | ANGULAR TOL ± 2.0 ° | | KREILLY | | 2015/09/28 | | | |
| CHKD: DSHEA | 2017/09/26 | 4 PLACES ± | | CHK'D BY | | DATE | | | |
| REV APPR: DBYRNES | | 3 PLACES ± | | DSHEA | | 2017/09/12 | | | |
| | | 2 PLACES ± 0.1 | | APPR BY | | DATE | | | |
| | | 1 PLACE ± 0.2 | | STGRIFFIN | | 2015/11/19 | | | |
| | | 0 PLACES ± | | DRAWING SIZE | | THIRD ANGLE PROJECTION | | | |
| DRAFT WHERE APPLICABLE MUST REMAIN WITHIN DIMENSIONS | | | | A2 | PRODUCT CUSTOMER DRAWING | | | | |
| SERIES | | MATERIAL NUMBER | | CUSTOMER | | GENERAL MARKET | | | |
| 93462 | | SEE TABLE ON SHEET 2 | | | | | | | |
| DOCUMENT NUMBER | | | | DOC TYPE | DOC PART | SHEET NUMBER | | | |
| 934620004 | | | | PSD | 000 | 1 OF 3 | | | |



SUGGESTED BOARD LAYOUT
FAST ETHERNET VERSION
COMPONENT SIDE
ALL DIMS REFERENCE DIMS



DETAIL A
SCALE 10:1

PIN CONFIGURATION
FOR FAST ETHERNET VERSION

| PART NUMBER | LEFT LED | RIGHT LED |
|-------------|----------|-----------|
| 93462-8320 | N/A | N/A |

| | | | | | | | | | | | |
|---|------------|------------|--|---------------------------------------|------------------------|--|---|--|--|--|--|
| THIS DRAWING CONTAINS INFORMATION THAT IS PROPRIETARY TO MOLEX ELECTRONIC TECHNOLOGIES, LLC AND SHOULD NOT BE USED WITHOUT WRITTEN PERMISSION | | | | | | | | | | | |
| REVISED EC NO: 116686 DRWN: KREILLY CHKD: DSHEA REV APPR: DBYRNES | 2017/05/09 | 2017/09/12 | 2017/09/26 | GENERAL TOLERANCES (UNLESS SPECIFIED) | DIMENSION UNITS | SCALE | molex INV MX-MAG 4 CORE FE W/SHIELD TABS | | | | |
| | | | | mm | 5:1 | | | | | | |
| | | | | ANGULAR TOL ± 2.0 ° | DRWN BY | DATE | PRODUCT CUSTOMER DRAWING | | | | |
| | | | | 4 PLACES ± | KREILLY | 2015/09/28 | | | | | |
| | | | | 3 PLACES ± | CHK'D BY | DATE | SERIES MATERIAL NUMBER CUSTOMER 93462 SEE TABLE GENERAL MARKET | | | | |
| | | | | 2 PLACES ± 0.1 | DSHEA | 2017/09/12 | | | | | |
| | | | 1 PLACE ± 0.2 | APPR BY | DATE | DOCUMENT NUMBER DOC TYPE DOC PART SHEET NUMBER 934620004 PSD 000 2 OF 3 | | | | | |
| | | | 0 PLACES ± | STGRIFFIN | 2015/11/19 | | | | | | |
| | | | DRAFT WHERE APPLICABLE MUST REMAIN WITHIN DIMENSIONS | DRAWING SIZE | THIRD ANGLE PROJECTION | | | | | | |
| B | | | | A2 | | | | | | | |

| Description | Value | |
|---|-------------------|--------------------------|
| OCL @100 kHz, 0.1 V 8 mA DC bias (-40°C to +85°C) | 350 μH min. | |
| Turns ratio | 1CT:1CT | |
| Transmission characteristics @ 25°C, all four pairs | | |
| Insertion Loss | | |
| Frequency f, (MHz) | Limits (dB max.) | Typical Values (dB max.) |
| 1.0-9.9 | 0.4+0.1*log(f) | 0.5 @ 10 MHz |
| 10-49.9 | 0.5+0.3*log(f/10) | 0.7 @ 50 MHz |
| 50-79.9 | 1+1.4*log(f/80) | 1.0 @ 80 MHz |
| 80-100 | 1.3+3*log(f/100) | 1.3 @ 100 MHz |
| Return Loss | | |
| Frequency f, (MHz) | Limits (dB min.) | Typical Values (dB min.) |
| 1.0-39.9 | 18 | 18 @ 40 MHz |
| 40-100 | 12-20*log(f/80) | 10 @ 100 MHz |
| CMR | | |
| Frequency f, (MHz) | Limits (dB min.) | Typical Values (dB min.) |
| 1.0-100 | 30 | 30 @ 100 MHz |
| Next | | |
| Frequency f, (MHz) | Limits (dB min.) | Typical Values (dB min.) |
| 1.0-39.9 | 35 | 35 @ 40 MHz |
| 40-100 | 33-20*log(f/50) | 27 @ 100 MHz |
| Isolation PHY to wire side | | |
| 2.25 kVDC/60sec | | |

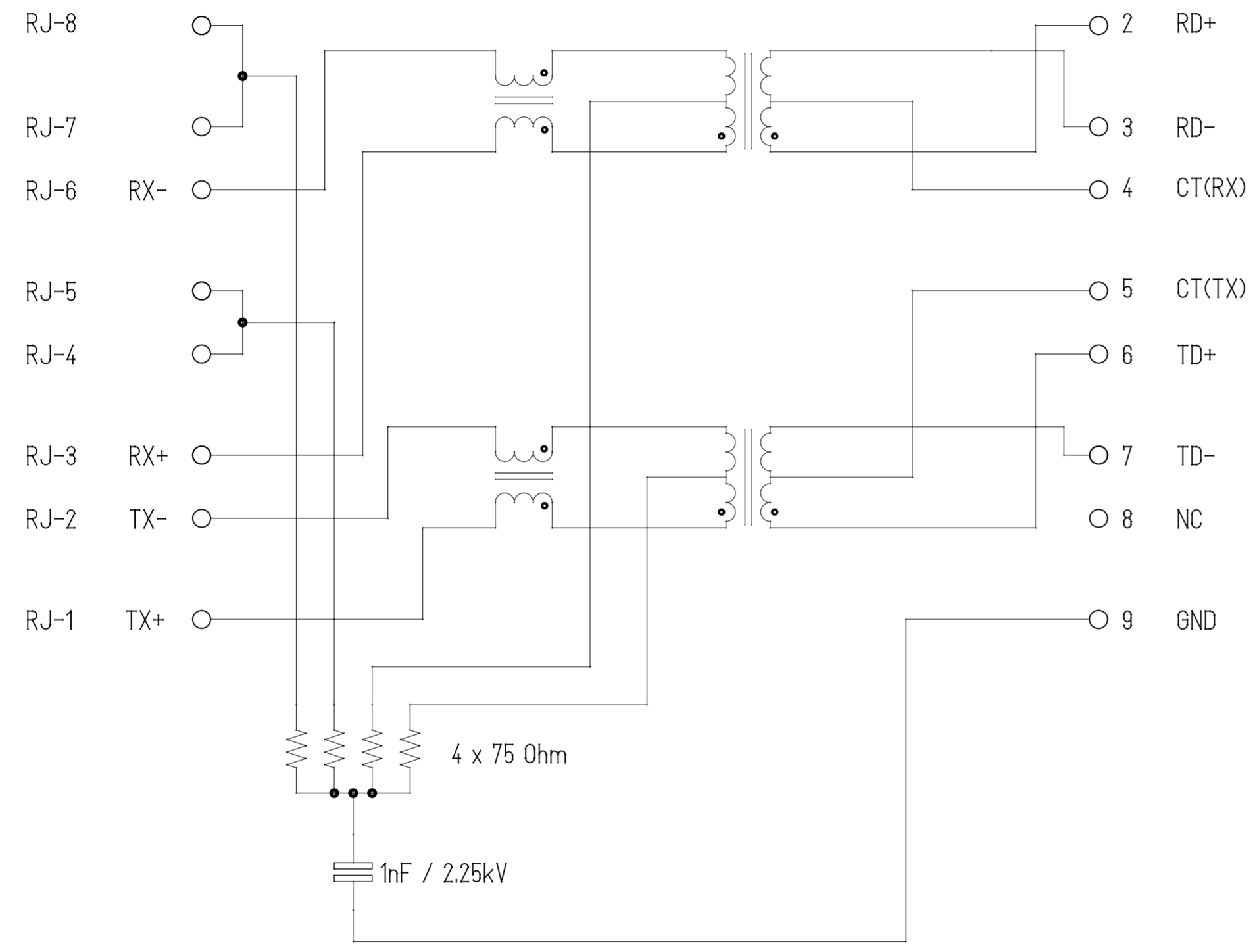
WIRE-SIDE / RJ-45

ETHERNET MAGNETICS

PHY-SIDE / PCB SIDE

RJ-45 CONTACTS

ETHERNET TERMINALS



Shield

THIS DRAWING CONTAINS INFORMATION THAT IS PROPRIETARY TO MOLEX ELECTRONIC TECHNOLOGIES, LLC AND SHOULD NOT BE USED WITHOUT WRITTEN PERMISSION

| | | | | | | |
|---|--|---------------------------------------|------------------------|--------------------------|----------------------|------------------------------------|
| REVISED EC NO: 116686 DRWN: KREILLY CHKD: DSHEA REV APPR: DBYRNES | 2017/05/09 | GENERAL TOLERANCES (UNLESS SPECIFIED) | DIMENSION UNITS | SCALE | | |
| | 2017/09/12 | (UNLESS SPECIFIED) | mm | 1:1 | | |
| | 2017/09/26 | ANGULAR TOL ± 2.0 ° | DRWN BY | DATE | | INV MX-MAG 4 CORE FE W/SHIELD TABS |
| | | 4 PLACES ± | KREILLY | 2015/09/28 | | |
| | | 3 PLACES ± | CHK'D BY | DATE | | |
| | 2 PLACES ± 0.1 | DSHEA | 2017/09/12 | | | |
| | 1 PLACE ± 0.2 | APPR BY | DATE | | | |
| | 0 PLACES ± | STGRIFFIN | 2015/11/19 | PRODUCT CUSTOMER DRAWING | | |
| | DRAFT WHERE APPLICABLE MUST REMAIN WITHIN DIMENSIONS | DRAWING SIZE | THIRD ANGLE PROJECTION | SERIES | MATERIAL NUMBER | CUSTOMER |
| | | A2 | | 93462 | SEE TABLE ON SHEET 2 | GENERAL MARKET |
| | | | | DOCUMENT NUMBER | DOC TYPE | DOC PART SHEET NUMBER |
| | | | | 934620004 | PSD | 000 3 OF 3 |