



Chipsmall Limited consists of a professional team with an average of over 10 year of expertise in the distribution of electronic components. Based in Hongkong, we have already established firm and mutual-benefit business relationships with customers from,Europe,America and south Asia,supplying obsolete and hard-to-find components to meet their specific needs.

With the principle of “Quality Parts,Customers Priority,Honest Operation,and Considerate Service”,our business mainly focus on the distribution of electronic components. Line cards we deal with include Microchip,ALPS,ROHM,Xilinx,Pulse,ON,Everlight and Freescale. Main products comprise IC,Modules,Potentiometer,IC Socket,Relay,Connector.Our parts cover such applications as commercial,industrial, and automotives areas.

We are looking forward to setting up business relationship with you and hope to provide you with the best service and solution. Let us make a better world for our industry!



Contact us

Tel: +86-755-8981 8866 Fax: +86-755-8427 6832

Email & Skype: info@chipsmall.com Web: www.chipsmall.com

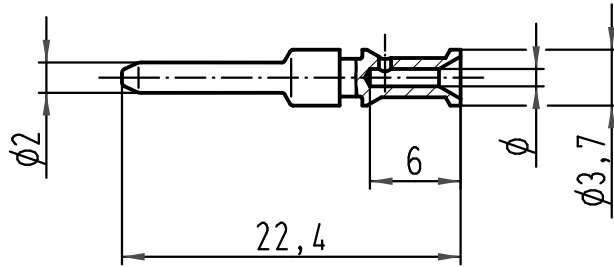
Address: A1208, Overseas Decoration Building, #122 Zhenhua RD., Futian, Shenzhen, China



1 2 3 4 5 6

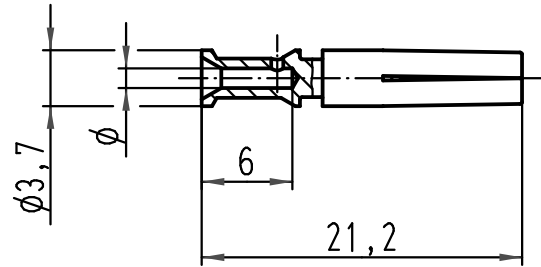
A

Stiftkontakt
male contact



B

Buchsenkontakt
female contact



C

	Bestell-Nummer /PART NO versilbert /silverplated	φ	Leiterquerschnitt wire gauge		Abisolierlänge der Litze stripping length
			mm ²	AWG	
Stiftkontakt male contact	09 35 000 6103	1,15	0,5	20	6,0
	09 35 000 6104	1,3	0,75	18	
	09 35 000 6105	1,45	1,0	18	
	09 35 000 6106	1,75	1,5	16	
	09 35 000 6107	2,25	2,5	14	
Buchsenkontakt female contact	09 35 000 6203	1,15	0,5	20	6,0
	09 35 000 6204	1,3	0,75	18	
	09 35 000 6205	1,45	1,0	18	
	09 35 000 6206	1,75	1,5	16	
	09 35 000 6207	2,25	2,5	14	

D

All Dimensions in mm Original Size DIN A 4	Techn. Character.			Nicht tolerierte Maß/Free size tolerances	
		Dat.	Name	Maßstab/Scale 2:1	Han P Kontakte gedreht 16A Han P contacts turned 16A
	Detail.	10.11.10	ML		
	Insp.		Be		
	Stand.				
A	HARTING Electric GmbH & Co. KG			TB 09 35 000 6...	Blatt/ page
Mod.	Dat.	Name	D-32339 Espelkamp		
				Sub. f. TB 09 35 000 6... v. 28.03.07	