



Chipsmall Limited consists of a professional team with an average of over 10 year of expertise in the distribution of electronic components. Based in Hongkong, we have already established firm and mutual-benefit business relationships with customers from,Europe,America and south Asia,supplying obsolete and hard-to-find components to meet their specific needs.

With the principle of “Quality Parts,Customers Priority,Honest Operation,and Considerate Service”,our business mainly focus on the distribution of electronic components. Line cards we deal with include Microchip,ALPS,ROHM,Xilinx,Pulse,ON,Everlight and Freescale. Main products comprise IC,Modules,Potentiometer,IC Socket,Relay,Connector.Our parts cover such applications as commercial,industrial, and automotives areas.

We are looking forward to setting up business relationship with you and hope to provide you with the best service and solution. Let us make a better world for our industry!



## Contact us

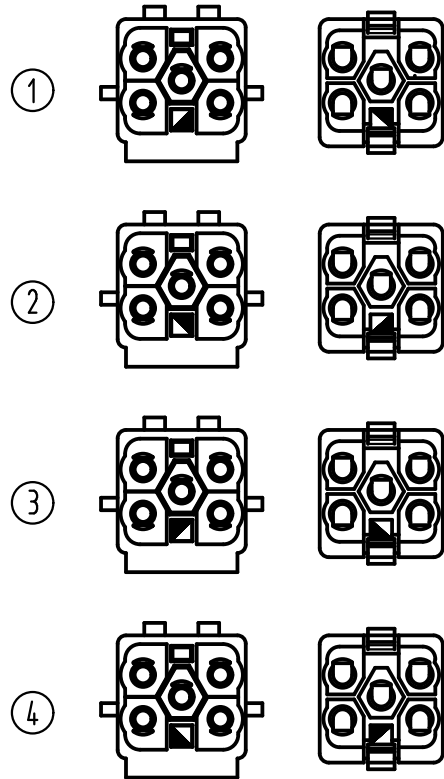
Tel: +86-755-8981 8866 Fax: +86-755-8427 6832

Email & Skype: [info@chipsmall.com](mailto:info@chipsmall.com) Web: [www.chipsmall.com](http://www.chipsmall.com)

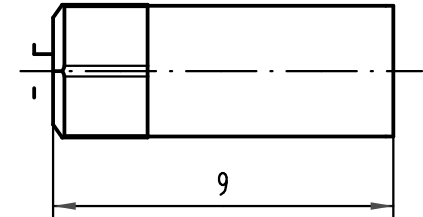
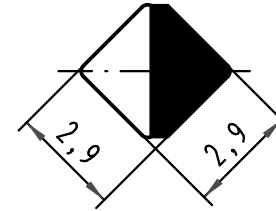
Address: A1208, Overseas Decoration Building, #122 Zhenhua RD., Futian, Shenzhen, China



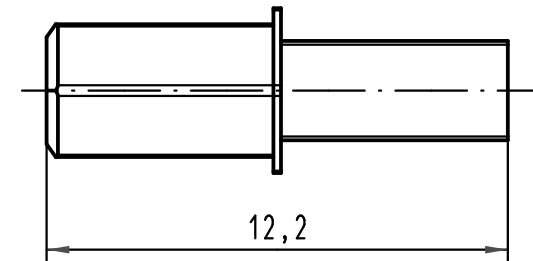
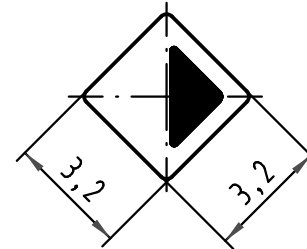
Kodiermöglichkeiten /coding possibilities



Codierstift für Han PushPull Power 4/0 Sti/  
coding pins for Han PushPull Power 4/0 male

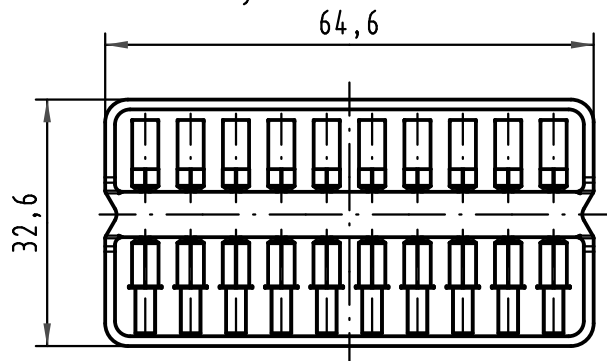




Codierstift für Han PushPull Power 4/0 Bu/  
coding pins for Han PushPull Power 4/0 female



Lieferform/  
kind of delivery

1:1



			All Dimensions in mm Original Size DIN A 4				Techn. Character.			Nicht tolerierte Maßel/Free size tolerances		
				Dat.	Name	Maßstab/Scale  2 : 1	Kodierstifte/ <i>coding pins</i> Han PushPull Power 4/0 male/female					
			Detail.	24.11.08	ML							
			Insp.		FER							
			Stand.									
35975	08.01.09	hsv	HARTING Electronics GmbH & Co. KG					TB 09 35 000 6190				Blatt/ page /
A			D-32339 ESPELKAMP									
Mod.	Dat.	Name					Sub.					