



Chipsmall Limited consists of a professional team with an average of over 10 year of expertise in the distribution of electronic components. Based in Hongkong, we have already established firm and mutual-benefit business relationships with customers from,Europe,America and south Asia,supplying obsolete and hard-to-find components to meet their specific needs.

With the principle of "Quality Parts,Customers Priority,Honest Operation,and Considerate Service",our business mainly focus on the distribution of electronic components. Line cards we deal with include Microchip,ALPS,ROHM,Xilinx,Pulse,ON,Everlight and Freescale. Main products comprise IC,Modules,Potentiometer,IC Socket,Relay,Connector.Our parts cover such applications as commercial,industrial, and automotives areas.

We are looking forward to setting up business relationship with you and hope to provide you with the best service and solution. Let us make a better world for our industry!



Contact us

Tel: +86-755-8981 8866 Fax: +86-755-8427 6832

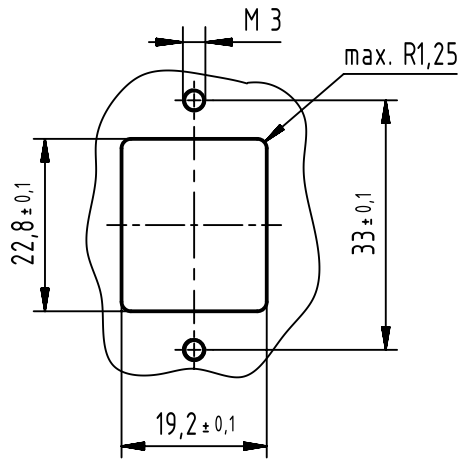
Email & Skype: info@chipsmall.com Web: www.chipsmall.com

Address: A1208, Overseas Decoration Building, #122 Zhenhua RD., Futian, Shenzhen, China

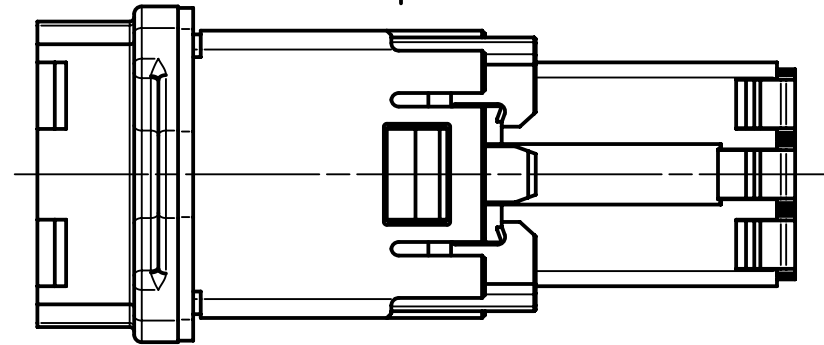
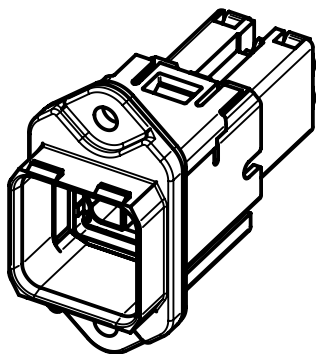


(1:1)

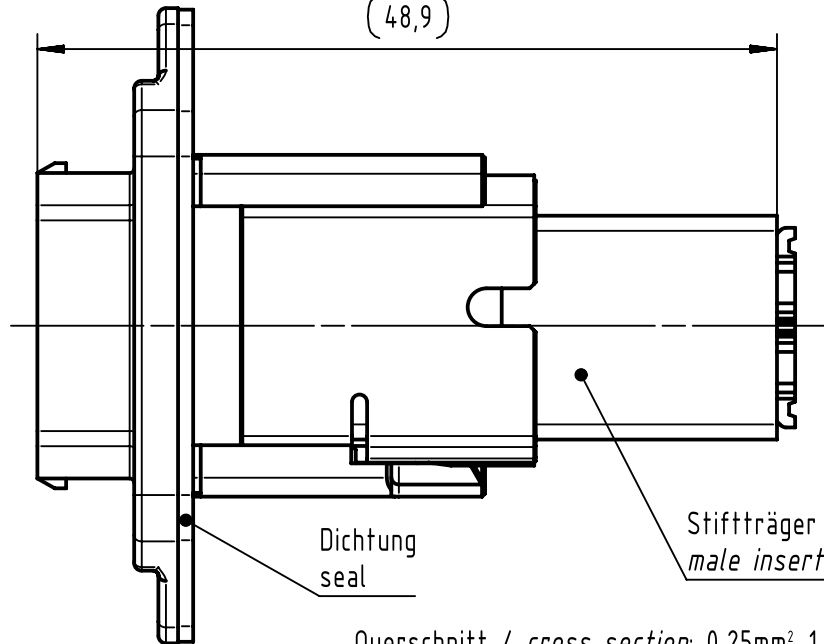
Montageausschnitt
panel cut out



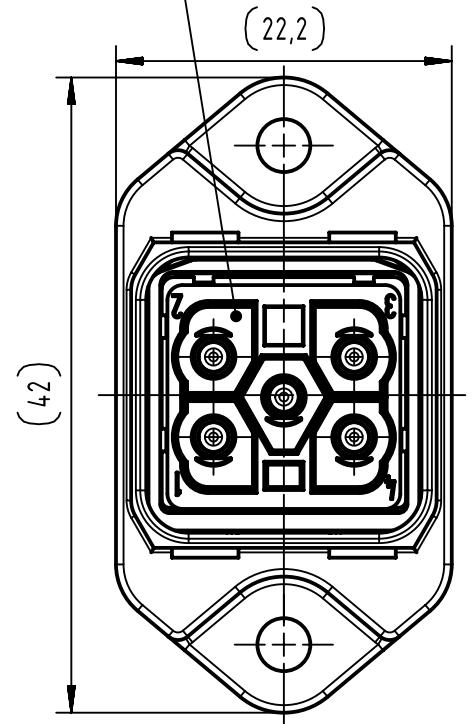
Wandstärke: 1mm bis 6mm
 thickness panel: 1mm to 6mm
 Anzugsmoment: 0,3Nm bis 0,5Nm
 screwing torque: 0.3Nm to 0.5Nm



Steckgesicht nach
 IEC 61076-03-118
 mating face acc to
 IEC 61076-3-118



Querschnitt / cross section: 0,25mm²-1,5mm²



	All Dimensions in mm Original Size DIN A4	Scale	Free size tol.		Ref.	
		2:1			Sub. TB 09352340311 500000058722 2013-02-06	
	All rights reserved Department EC PD - DE	Created by	Inspected by	Standardisation	Date	State
		ELLERMANN	DAHMS	HOFFMANN	2013-06-12	Final Release
HARTING Electronics GmbH D-32339 Espelkamp		Title			Doc-Key / ECM-Nr.	
		Han PP Power PFT metal QL AWG23-16			100228038/UGD/003/C 500000062511	
		Type	Number		Rev.	Page
		TB	09352340311		C	1/1