



Chipsmall Limited consists of a professional team with an average of over 10 year of expertise in the distribution of electronic components. Based in Hongkong, we have already established firm and mutual-benefit business relationships with customers from,Europe,America and south Asia,supplying obsolete and hard-to-find components to meet their specific needs.

With the principle of “Quality Parts,Customers Priority,Honest Operation,and Considerate Service”,our business mainly focus on the distribution of electronic components. Line cards we deal with include Microchip,ALPS,ROHM,Xilinx,Pulse,ON,Everlight and Freescale. Main products comprise IC,Modules,Potentiometer,IC Socket,Relay,Connector.Our parts cover such applications as commercial,industrial, and automotives areas.

We are looking forward to setting up business relationship with you and hope to provide you with the best service and solution. Let us make a better world for our industry!



Contact us

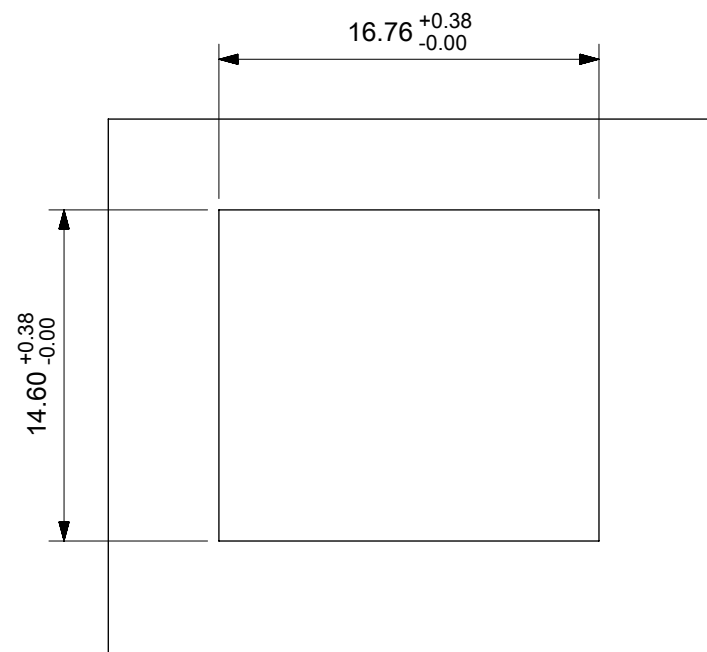
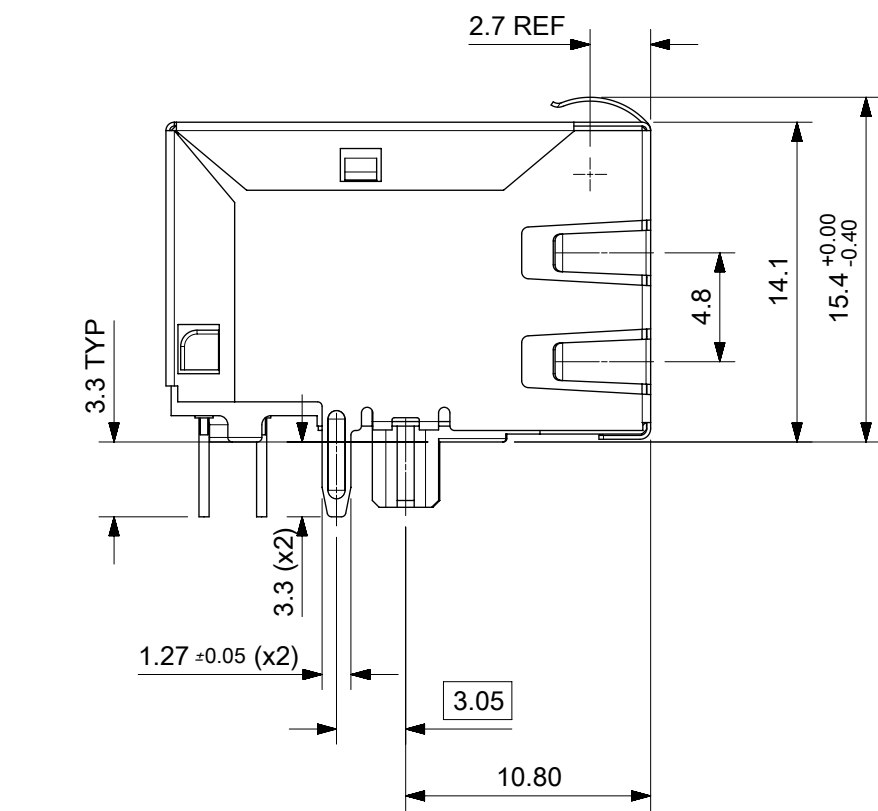
Tel: +86-755-8981 8866 Fax: +86-755-8427 6832

Email & Skype: info@chipsmall.com Web: www.chipsmall.com

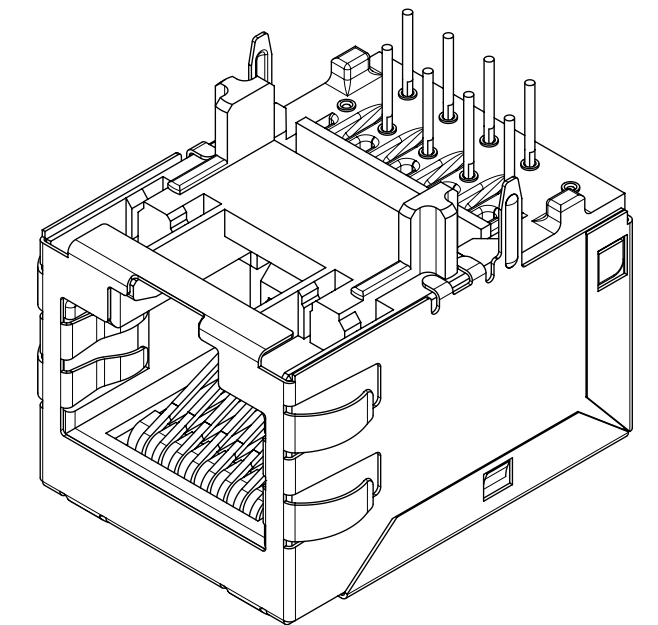
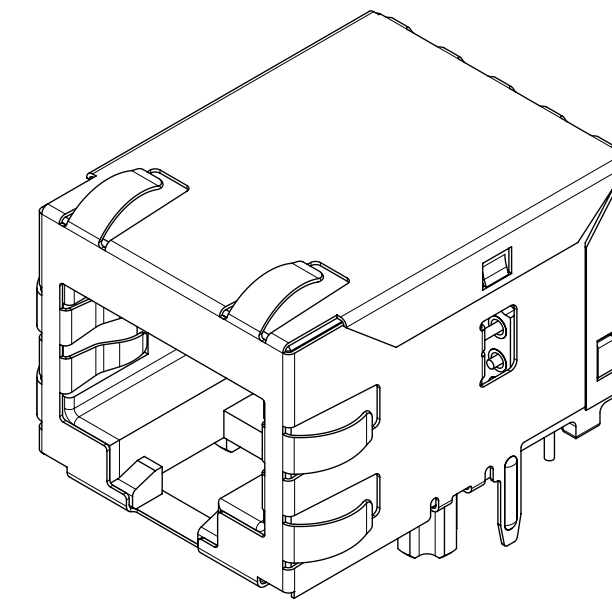
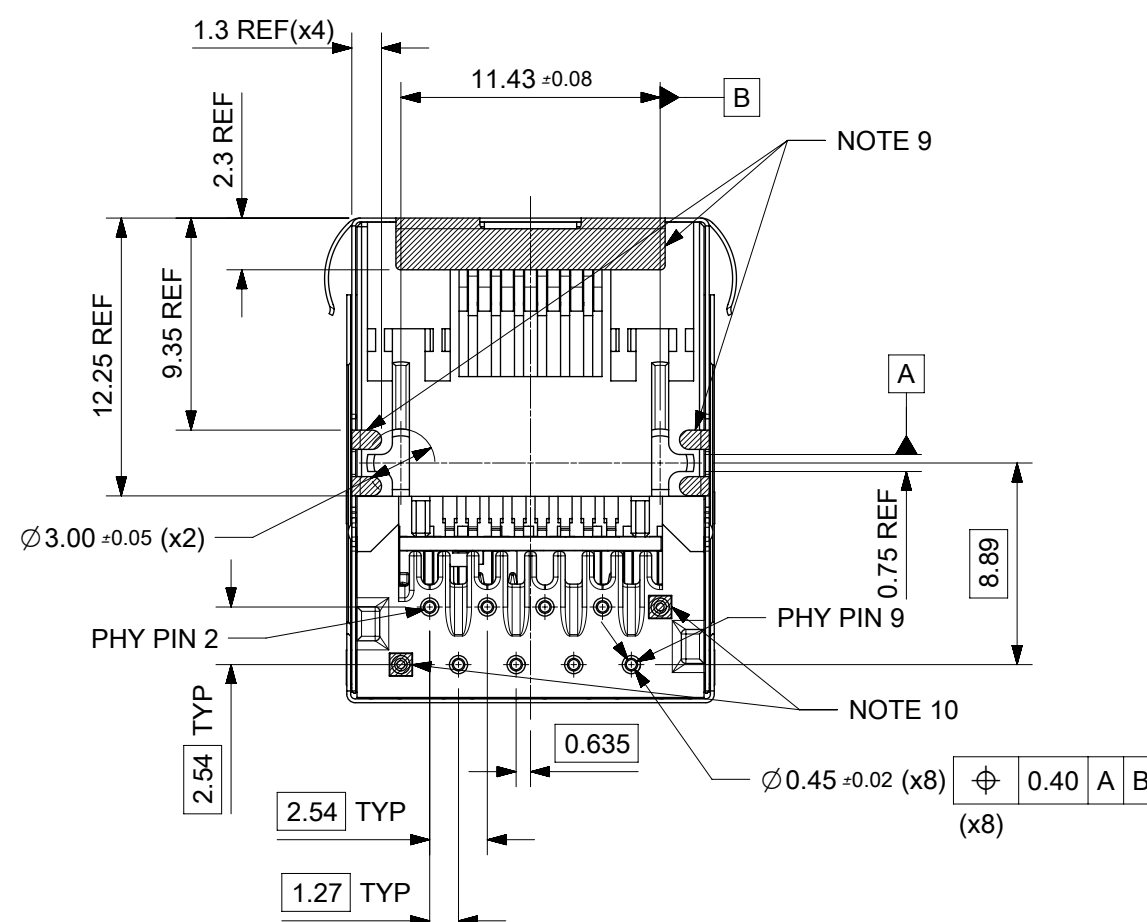
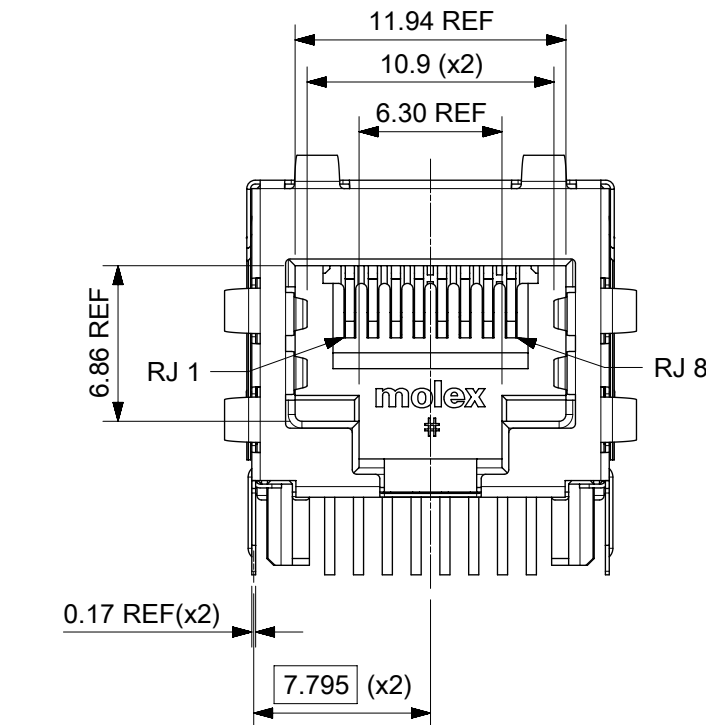
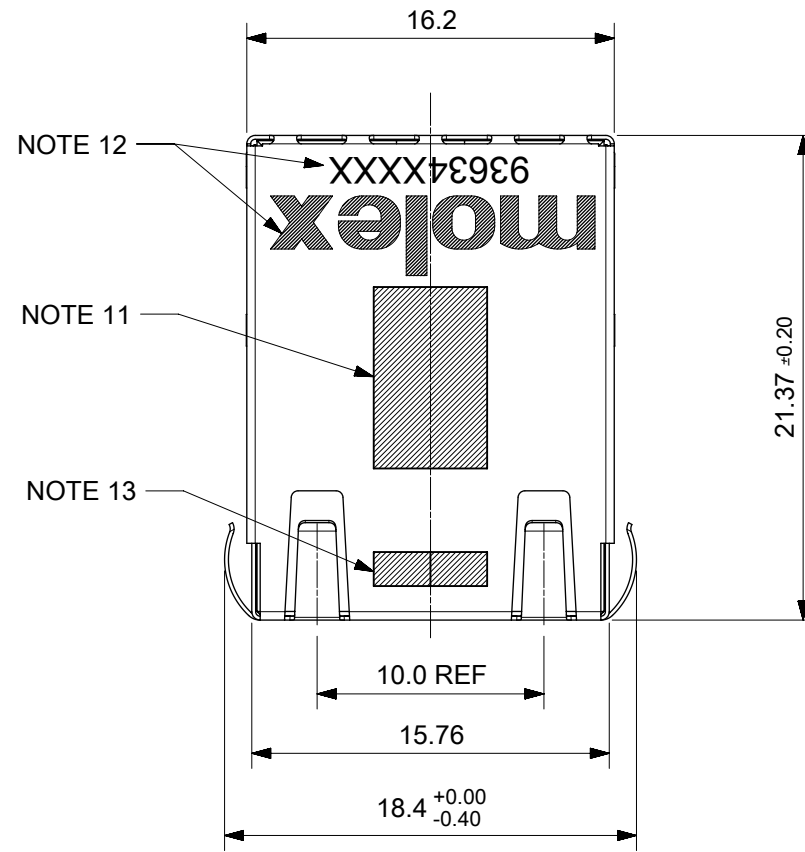
Address: A1208, Overseas Decoration Building, #122 Zhenhua RD., Futian, Shenzhen, China



STANDARD PROFILE MAGNETIC JACK
FAST ETHERNET W/O LEDs
AND W/ SHIELD TABS TOP AND SIDE

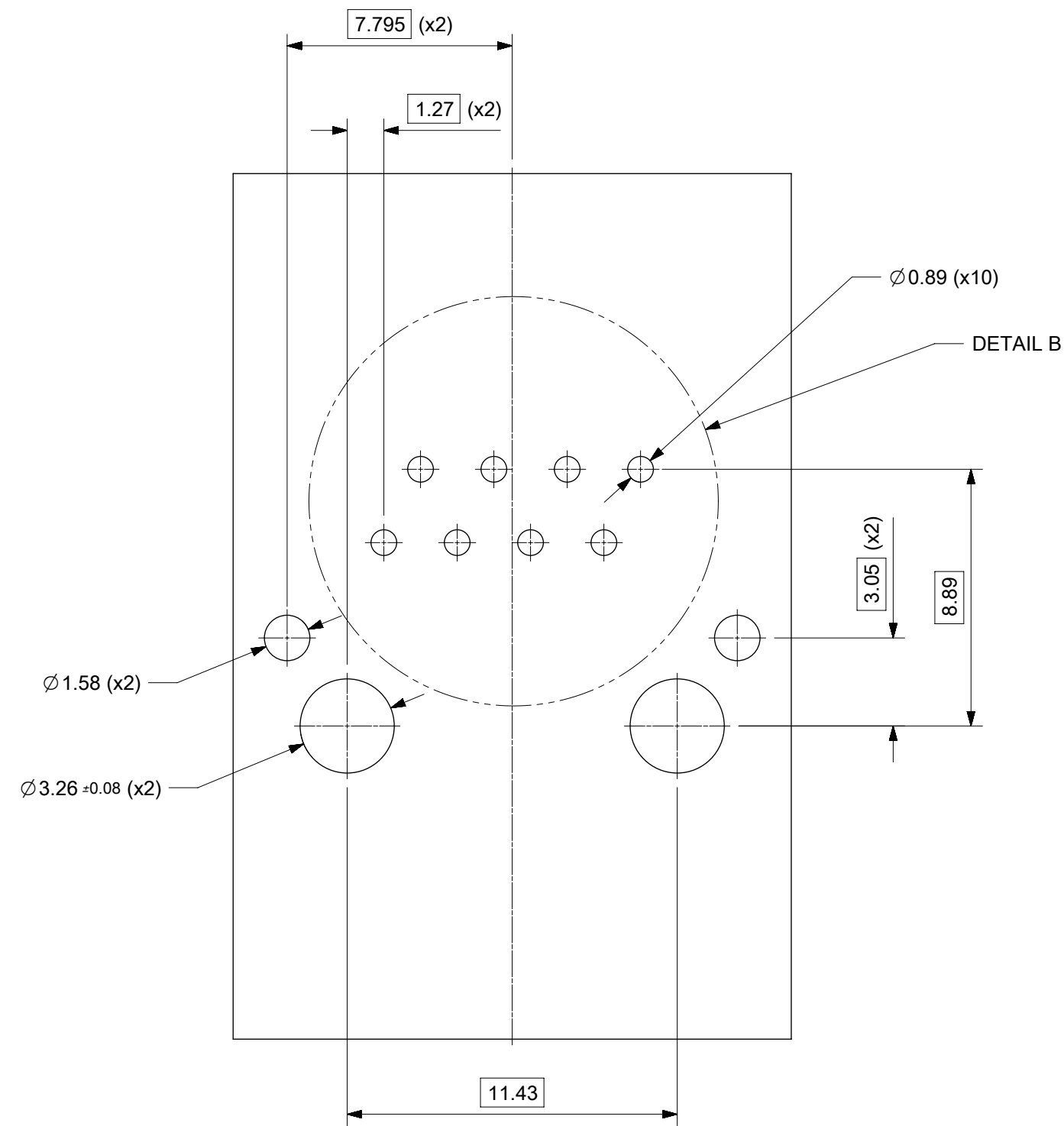


SUGGESTED PANEL CUT-OUT



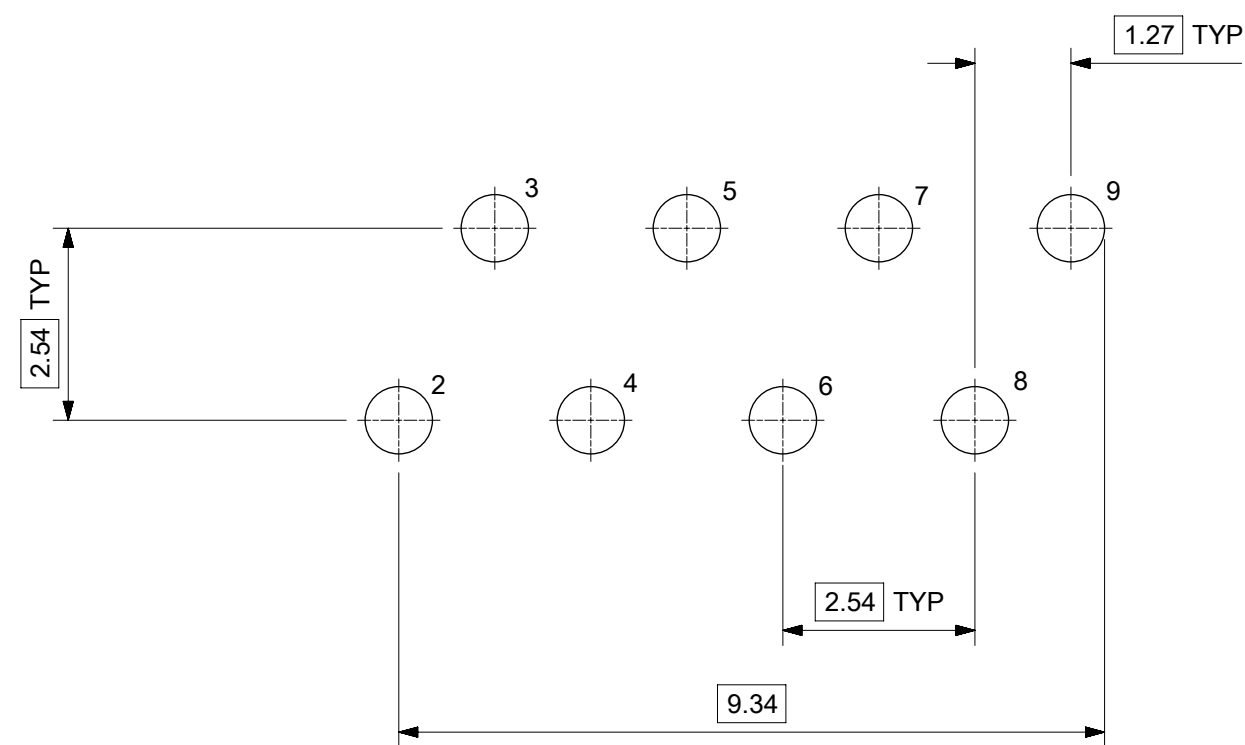
- NOTES:
- SHIELD MATERIAL: 0.17mm THICK BRASS PRE-PLATED WITH NICKEL.
SOLDER TABS POST DIPPED WITH MIN. 1.27µm TIN
 - HOUSING MATERIAL: LCP, BLACK, UL 94V-0
 - TERMINAL MATERIAL: PHOSPHOR BRONZE
RJ45 CONTACT PLATING: BASE NICKEL, GOLD
FLASH OVER PALLADIUM NICKEL REFER TO 934620001 PSP
PHY SOLDER TAILS: COPPER ALLOY
 - MATING INTERFACE ACCORDING TO IEC 60603-7 & TIA-1096-A
 - PRODUCT SPECIFICATION: 934620001 PSP
 - PACKAGING SPECIFICATION: 934620001 PSK TRAY
 - STAND OFF TO SYSTEM BOARD 0.30mm MINIMUM
 - RECOMMENDED PCB THICKNESS: 1.57mm
 - SHIELD: AVOID ROUTING TRACES
OR PLACING ANY VIAS BELOW THESE AREAS
 - PIN NOT ASSEMBLED
 - AREA FOR PICK AND PLACE: 5.0mm X 8.0mm
 - INSCRIPTION MARKED BY LASER:
1st : MOLEX
2nd : P/N (SEE BOM)
 - DATE CODE (DAY/WEEK/YEAR)
 - MATERIAL COMPLIANT TO RoHS DIRECTIVE 2002/95/EC

EC NO: 114553 DRWN: DSHEA CHKD: DBYRNES APPR: STGRIFFIN		2017/03/15 2017/04/14 2017/04/25	GENERAL TOLERANCES (UNLESS SPECIFIED) ANGULAR TOL ± 2.0 ° 4 PLACES ± 3 PLACES ± 2 PLACES ± 0.1 1 PLACE ± 0.2 0 PLACES ±	DIMENSION UNITS: MM SCALE: 3:1 DRWN BY: KREILLY DATE: 2015/10/19 CHK'D BY: DBYRNES DATE: 2016/09/19 APPR BY: STGRIFFIN DATE: 2016/10/07	
DRAFT WHERE APPLICABLE MUST REMAIN WITHIN DIMENSIONS		A2	THIRD ANGLE PROJECTION	PRODUCT CUSTOMER DRAWING	
SERIES: 93634 MATERIAL NUMBER: SEE CHART CUSTOMER: GENERAL MARKET		DOCUMENT NUMBER: 936340002 DOC TYPE: PSD DOC PART: 000 SHEET NUMBER: 1 OF 3			



PART NUMBER 93634-8020

SUGGESTED BOARD LAYOUT
FAST ETHERNET VERSION
COMPONENT SIDE
ALL DIMS REFERENCE DIMS



PIN CONFIGURATION
FOR FAST ETHERNET VERSION

DETAIL B
SCALE 10:1

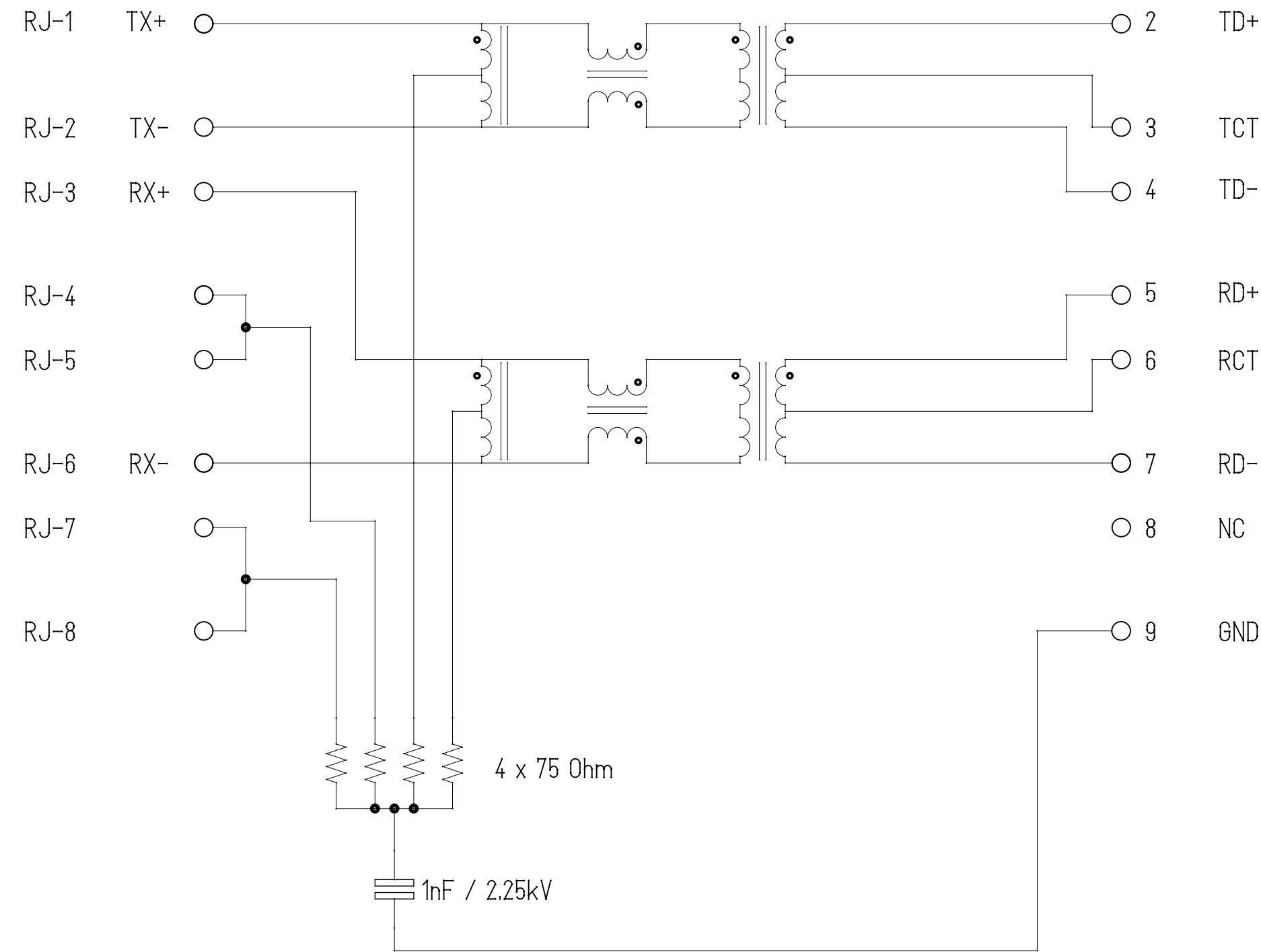
THIS DRAWING CONTAINS INFORMATION THAT IS PROPRIETARY TO MOLEX ELECTRONIC TECHNOLOGIES, LLC AND SHOULD NOT BE USED WITHOUT WRITTEN PERMISSION

REVISED EC NO: 114553 DRWN: DSHEA CHKD: DBYRNES APPR: STGRIFFIN 2017/03/15 2017/04/14 2017/04/25	GENERAL TOLERANCES (UNLESS SPECIFIED)		DIMENSION UNITS	SCALE	
	ANGULAR TOL ± 2.0 °		MM	5:1	
	4 PLACES ±	DRWN BY	DATE		
	3 PLACES ±	KREILLY	2015/10/19		
	2 PLACES ± 0.1	CHK'D BY	DATE		
	1 PLACE ± 0.2	DBYRNES	2016/09/19		
0 PLACES ±	APPR BY	DATE		PRODUCT CUSTOMER DRAWING	
DRAFT WHERE APPLICABLE MUST REMAIN WITHIN DIMENSIONS		DRAWING SIZE	THIRD ANGLE PROJECTION		SERIES
		A2			93634
				SEE CHART	CUSTOMER
				GENERAL MARKET	
				DOCUMENT NUMBER	DOC TYPE
				936340002	PSD
				DOC PART	SHEET NUMBER
				000	2 OF 3

WIRE-SIDE / RJ-45

ETHERNET MAGNETICS

PHY-SIDE / PCB SIDE



Shield

Description	Value	
OCL @100kHz, 0.1V, 8mA DC bias (-40°C to +85°C)	350µH min.	
Turns ratio	1CT:1CT	
Transmission characteristics @ 25°C, all four pairs		
Insertion Loss		
Frequency (MHz)	Limits (dB max.)	Typical Values (dB max.)
1.0-9.9 MHz	0.4+0.1*log(F)	0.5 @ 10MHz
10-49.9 MHz	0.5+0.3*log(F/10)	0.7 @ 50MHz
50-79.9 MHz	1+1.4*log(F/80)	1.0 @ 80MHz
80-100 MHz	1.3+3*log(F/100)	1.3 @ 100MHz
Return Loss		
Frequency (MHz)	Limits (dB min.)	Typical Values (dB min.)
1.0-39.9 MHz	18	18 @ 40MHz
40-100 MHz	12-20*log(F/80)	10 @ 100MHz
CMR		
Frequency (MHz)	Limits (dB min.)	Typical Values (dB min.)
1.0-100MHz	30	30 @ 100MHz
Next		
Frequency (MHz)	Limits (dB min.)	Typical Values (dB min.)
1.0-39.9MHz	35	35 @ 40MHz
40-100MHz	33-20*log(F/50)	27 @ 100MHz
Isolation PHY to wire side	2.25kVDC/60sec	

RJ-45 CONTACTS

ETHERNET TERMINALS

THIS DRAWING CONTAINS INFORMATION THAT IS PROPRIETARY TO MOLEX ELECTRONIC TECHNOLOGIES, LLC AND SHOULD NOT BE USED WITHOUT WRITTEN PERMISSION

REVISED EC NO: 114653 DRWN: DSHEA CHKD: DBYRNES REV APPR: STGRIFFIN	2017/03/15	GENERAL TOLERANCES (UNLESS SPECIFIED)	DIMENSION UNITS	SCALE		
	2017/04/14	(UNLESS SPECIFIED)	MM	1:1		
	2017/04/25	ANGULAR TOL ± 2.0 °	DRWN BY	DATE		STD MXMAG 6 CORE FE W/ SHIELD TABS
		4 PLACES ±	KREILLY	2015/10/19		
		3 PLACES ±	CHK'D BY	DATE		
	2 PLACES ± 0.1	DBYRNES	2016/09/19			
	1 PLACE ± 0.2	APPR BY	DATE			
	0 PLACES ±	STGRIFFIN	2016/10/07	PRODUCT CUSTOMER DRAWING		
	DRAFT WHERE APPLICABLE MUST REMAIN WITHIN DIMENSIONS	DRAWING SIZE	THIRD ANGLE PROJECTION	SERIES	MATERIAL NUMBER	CUSTOMER
		A2		93634	SEE CHART	GENERAL MARKET
				DOCUMENT NUMBER	DOC TYPE	DOC PART SHEET NUMBER
				936340002	PSD	000 3 OF 3