



Chipsmall Limited consists of a professional team with an average of over 10 year of expertise in the distribution of electronic components. Based in Hongkong, we have already established firm and mutual-benefit business relationships with customers from,Europe,America and south Asia,supplying obsolete and hard-to-find components to meet their specific needs.

With the principle of “Quality Parts,Customers Priority,Honest Operation,and Considerate Service”,our business mainly focus on the distribution of electronic components. Line cards we deal with include Microchip,ALPS,ROHM,Xilinx,Pulse,ON,Everlight and Freescale. Main products comprise IC,Modules,Potentiometer,IC Socket,Relay,Connector.Our parts cover such applications as commercial,industrial, and automotives areas.

We are looking forward to setting up business relationship with you and hope to provide you with the best service and solution. Let us make a better world for our industry!



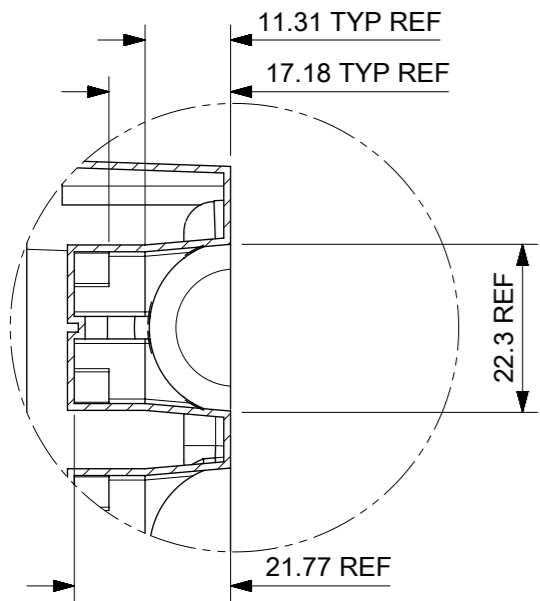
Contact us

Tel: +86-755-8981 8866 Fax: +86-755-8427 6832

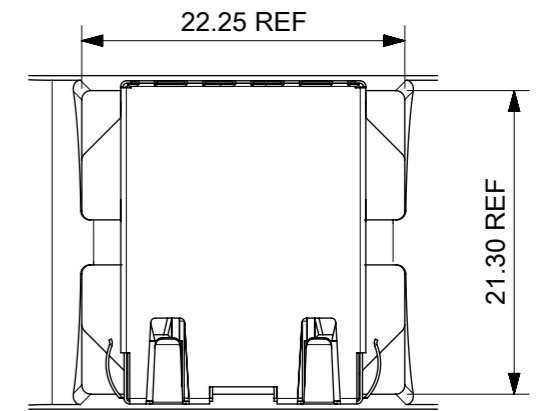
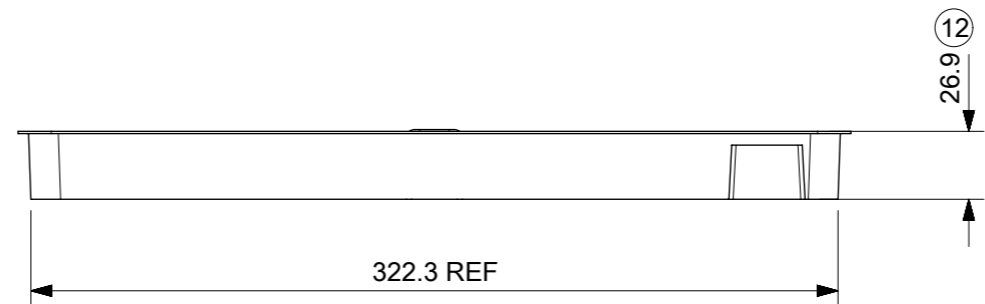
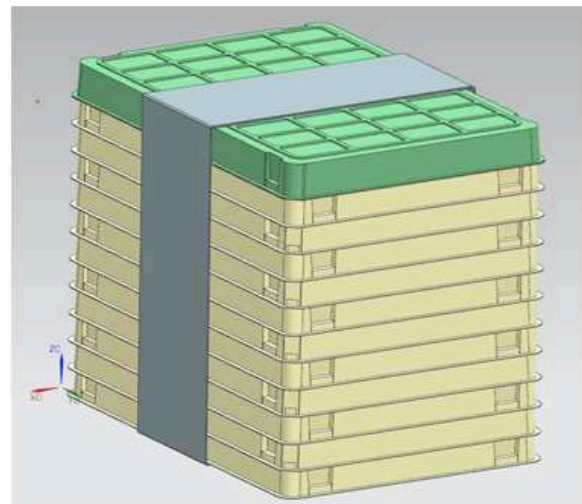
Email & Skype: info@chipsmall.com Web: www.chipsmall.com

Address: A1208, Overseas Decoration Building, #122 Zhenhua RD., Futian, Shenzhen, China

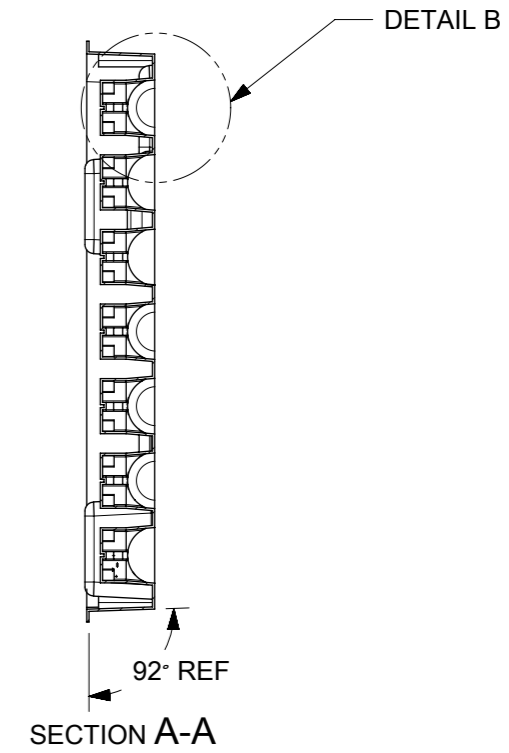
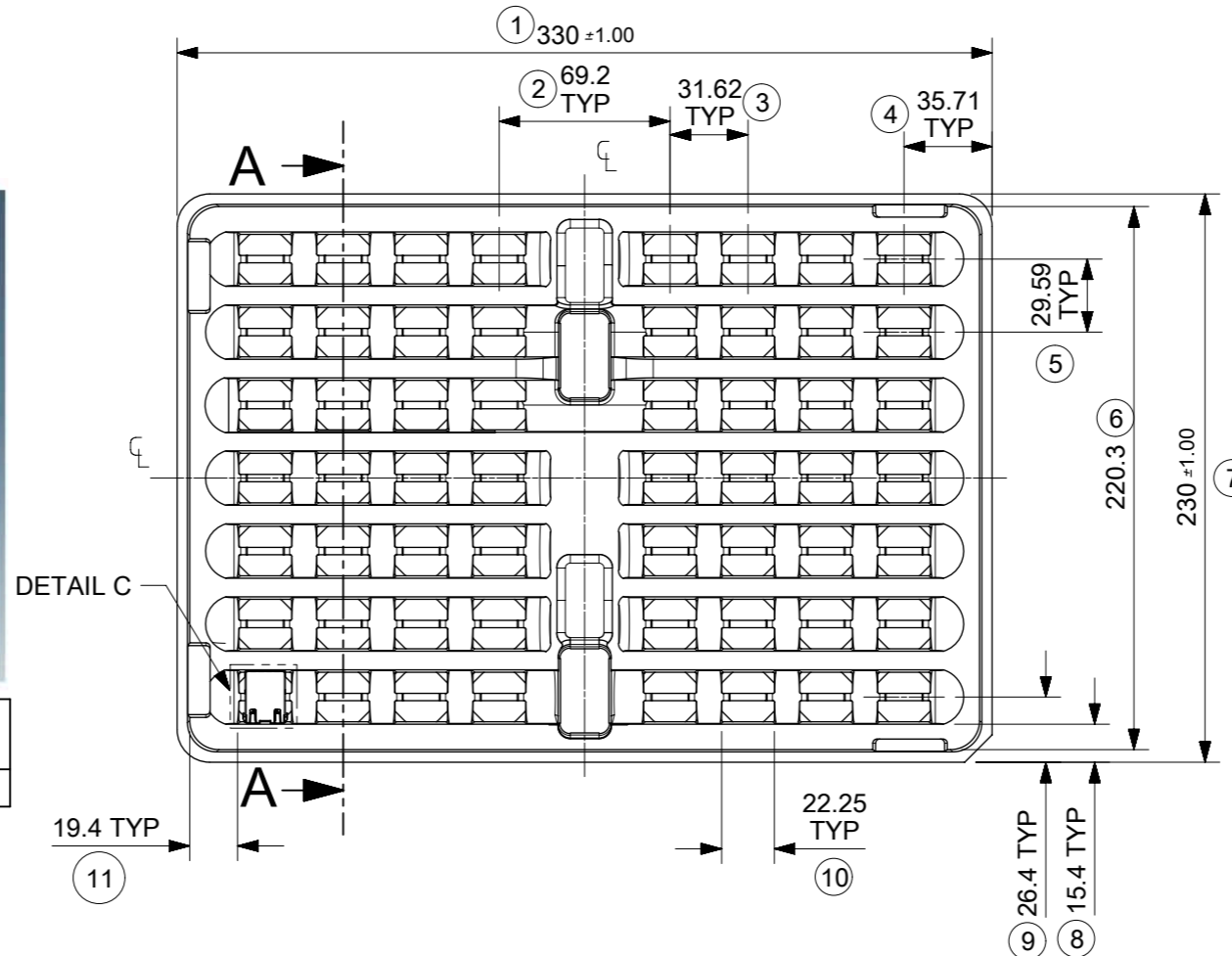




DETAIL B



DETAIL C
SCALE 2:1



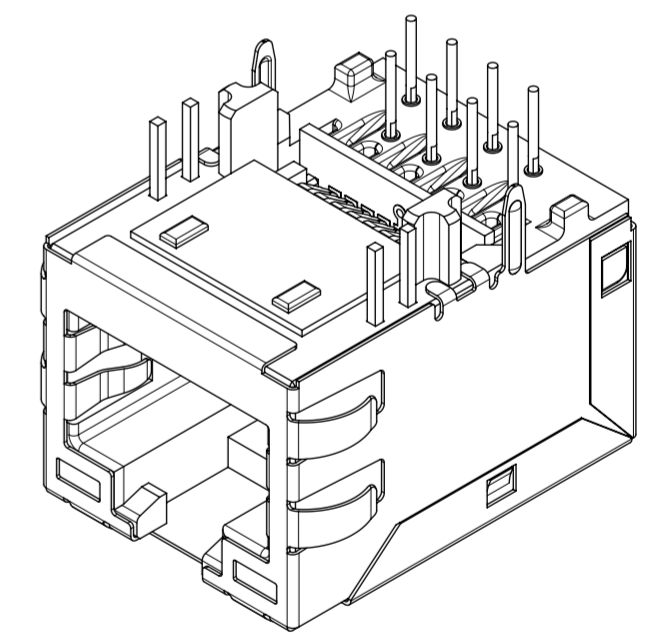
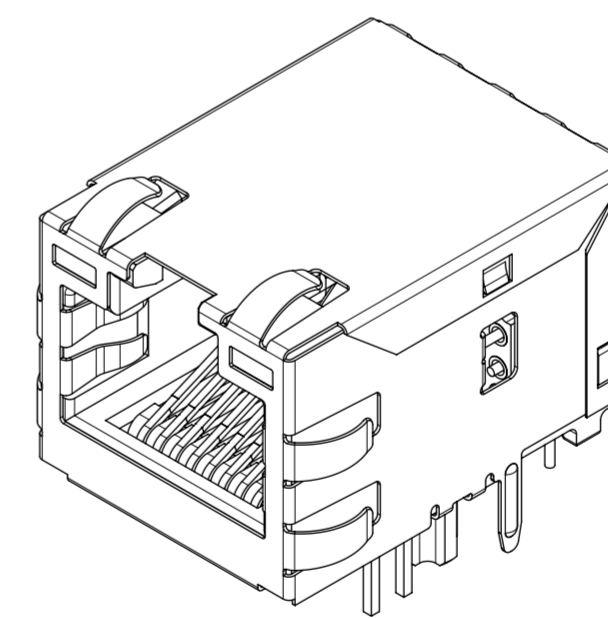
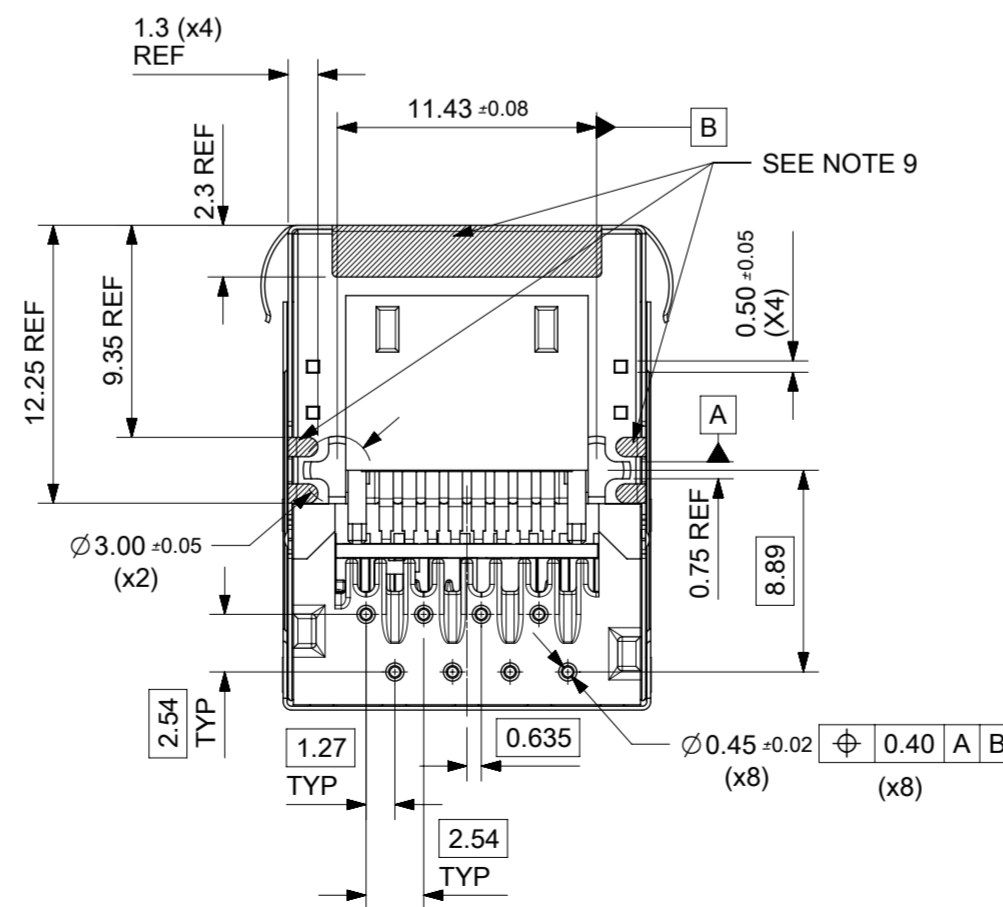
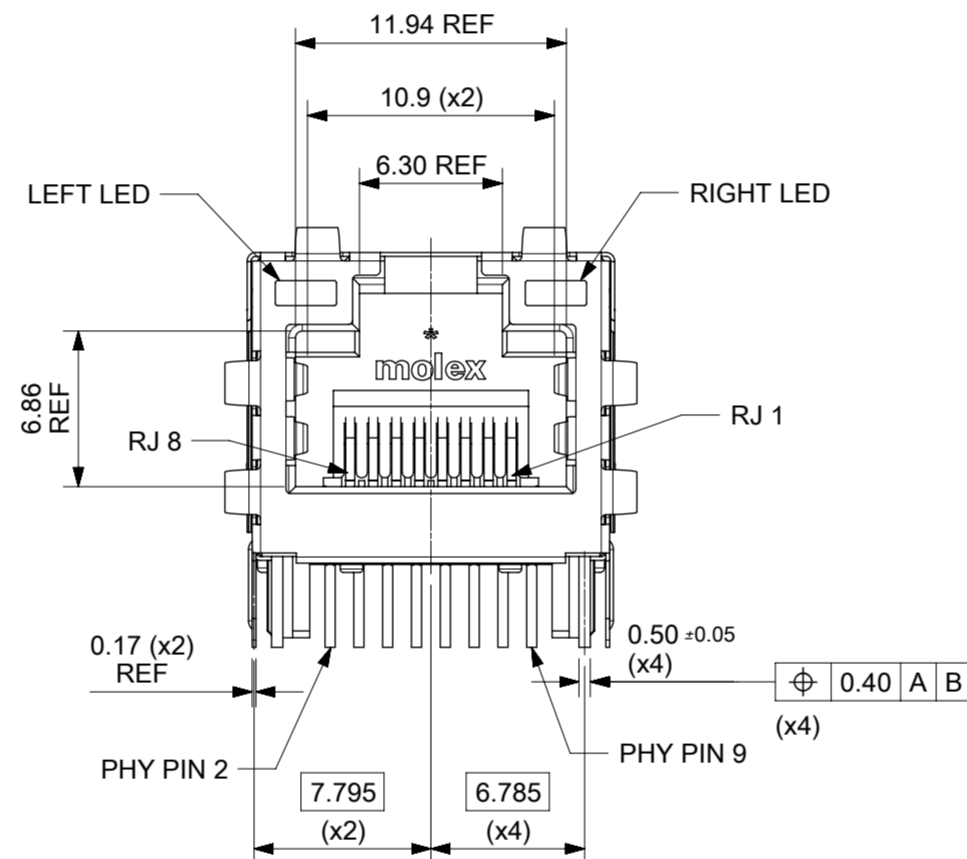
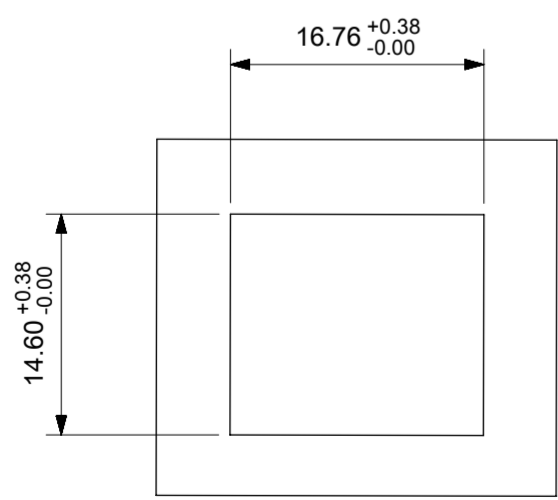
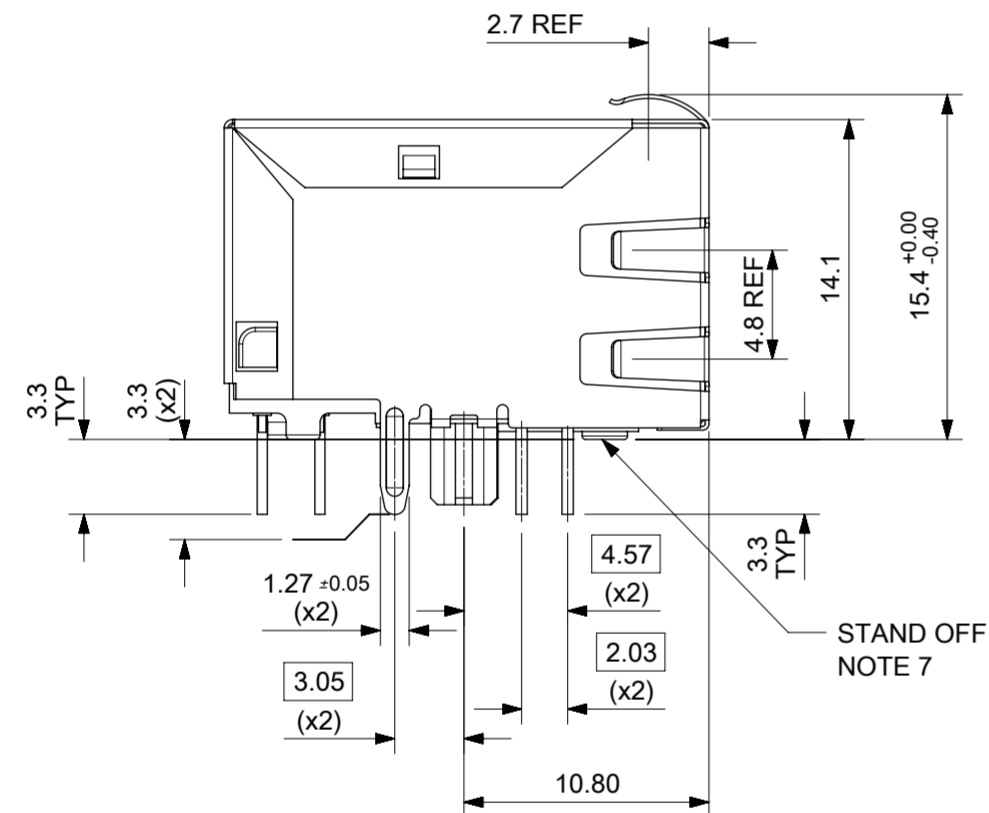
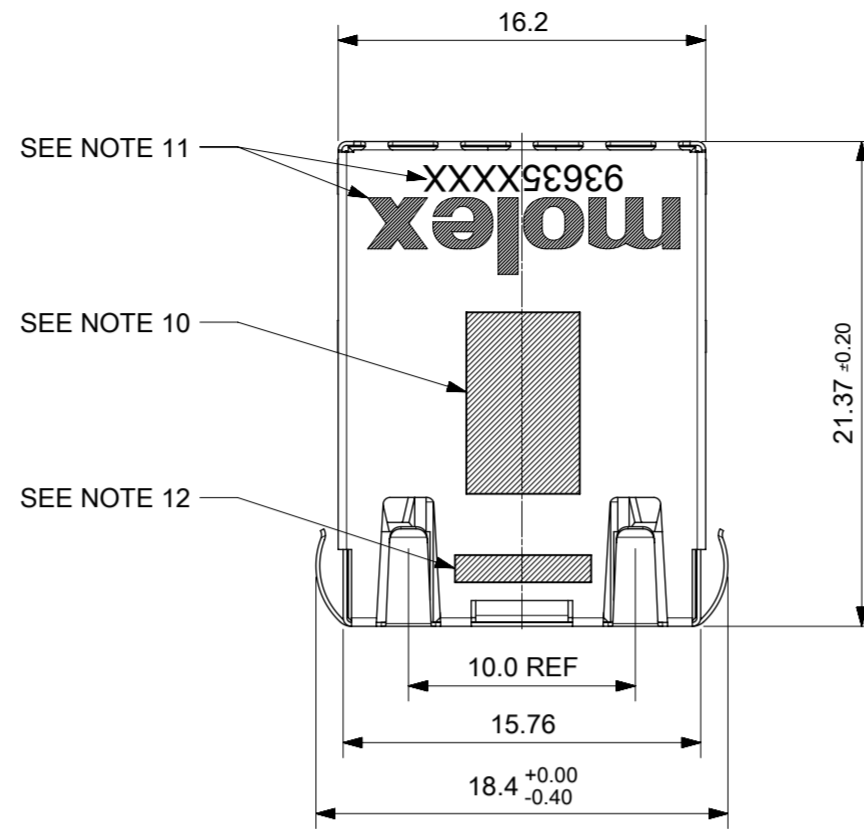
VERSION	QUANTITY PER TRAY	QUANTITY OF TRAYS PER BOX	QUANTITY PER BOX	QUANTITY PER PALLET
0.85" VERSION	56	12	672	18,144

- NOTES:
- MATERIAL: PETA ANTISTATIC
 - THICKNESS: 0.9mm ±0.05mm
 - COLOUR: CLEAR
 - BOW 2mm MAXIMUM PER 330mm
 - TWIST 2mm MAXIMUM PER 330mm
 - TRAY PART NO. AND RECYCLE LOGO TO BE CLEARLY MARKED ON TRAY
RECYCLE LOGO SHOULD BE APPROPRIATE TO MATERIAL USED
 - WHERE RELEVANT, DIMENSIONS SHOULD BE SYMMETRICAL ABOUT THE CENTRELINE
 - GENERAL PROFILE TOLERANCE $\overline{\cup}$ 0.40 ON NON DIMENSIONED FEATURES

LAST INSPECTION NUMBER USED: 12

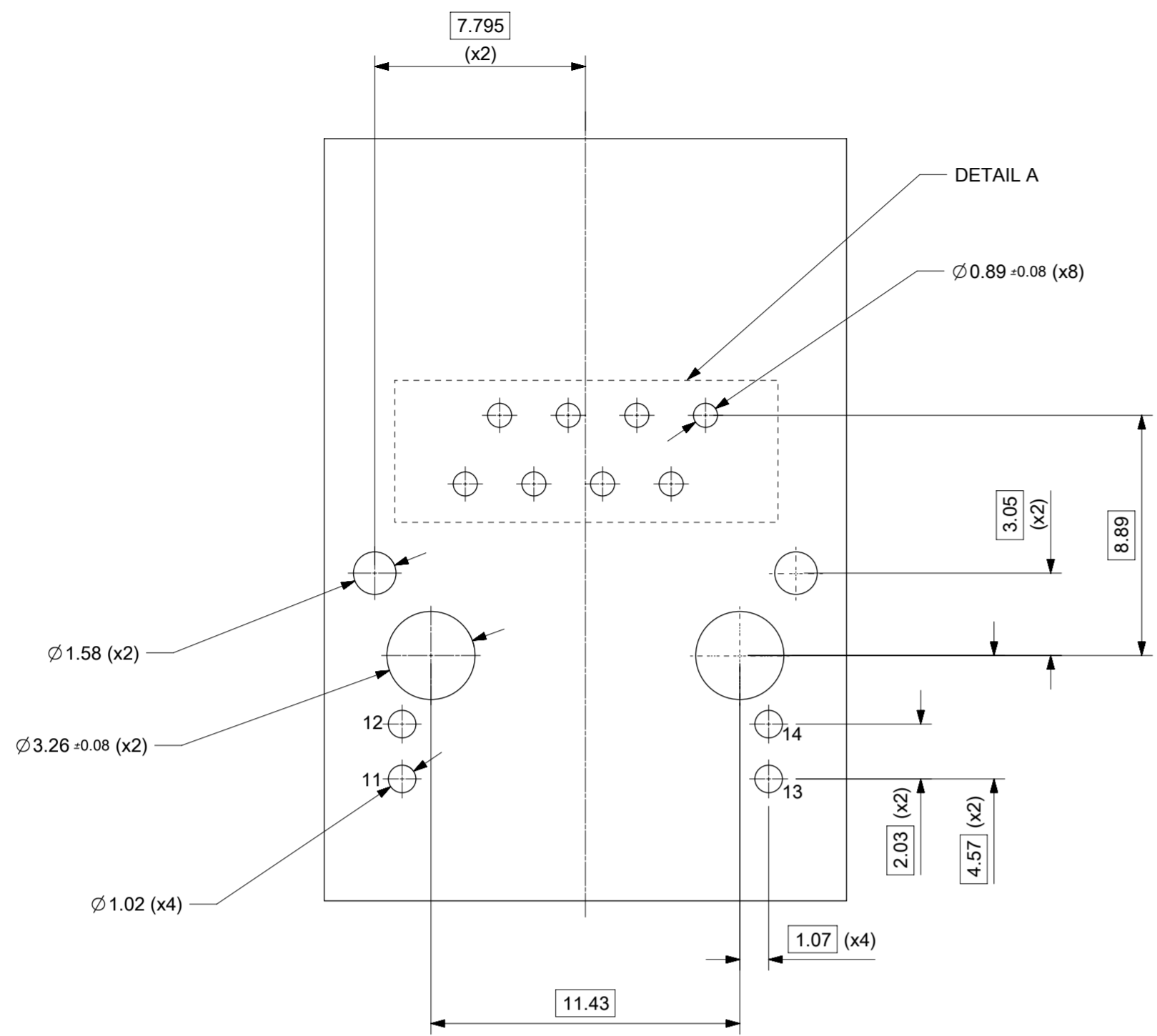
THIS DRAWING CONTAINS INFORMATION THAT IS PROPRIETARY TO MOLEX ELECTRONIC TECHNOLOGIES, LLC AND SHOULD NOT BE USED WITHOUT WRITTEN PERMISSION												
QUALITY SYMBOLS ∇_A = 0 ∇_E = 0 ∇_F = 0 ∇_G = 0 ∇_C = 0 ∇_X = 0 \blacksquare = 0 ∇_V = 0	ORIGINAL RELEASE EC NO: 109024 DRWN: DALLENO1 CHK'D: DALLENO1 APPR: STGRIFFIN		GENERAL TOLERANCES (UNLESS SPECIFIED) ANGULAR TOL ± 1.0 ° 4 PLACES ± 3 PLACES ± 2 PLACES ± 0.2 1 PLACE ± 0.5 0 PLACES ±		DIMENSION UNITS: MM SCALE: 1:3					MXMAG STANDARD AND INVERTED TRAY		
	DRWN BY: KREILLY DATE: 2016/05/06		APPR BY: STGRIFFIN DATE: 2016/12/07		DRAFT WHERE APPLICABLE MUST REMAIN WITHIN DIMENSIONS							DRAWING SIZE: A3 THIRD ANGLE PROJECTION
	SERIES: 93462		MATERIAL NUMBER: 990250150		CUSTOMER: GENERAL MARKET		DOCUMENT NUMBER: 934620003		DOC TYPE: PSD		DOC PART: K	
	SHEET NUMBER: 1 OF 1		SHEET NUMBER: 1 OF 1		SHEET NUMBER: 1 OF 1		SHEET NUMBER: 1 OF 1		SHEET NUMBER: 1 OF 1		SHEET NUMBER: 1 OF 1	

INVERTED PROFILE MAGNETIC JACK
FAST ETHERNET W/SHIELD TABS

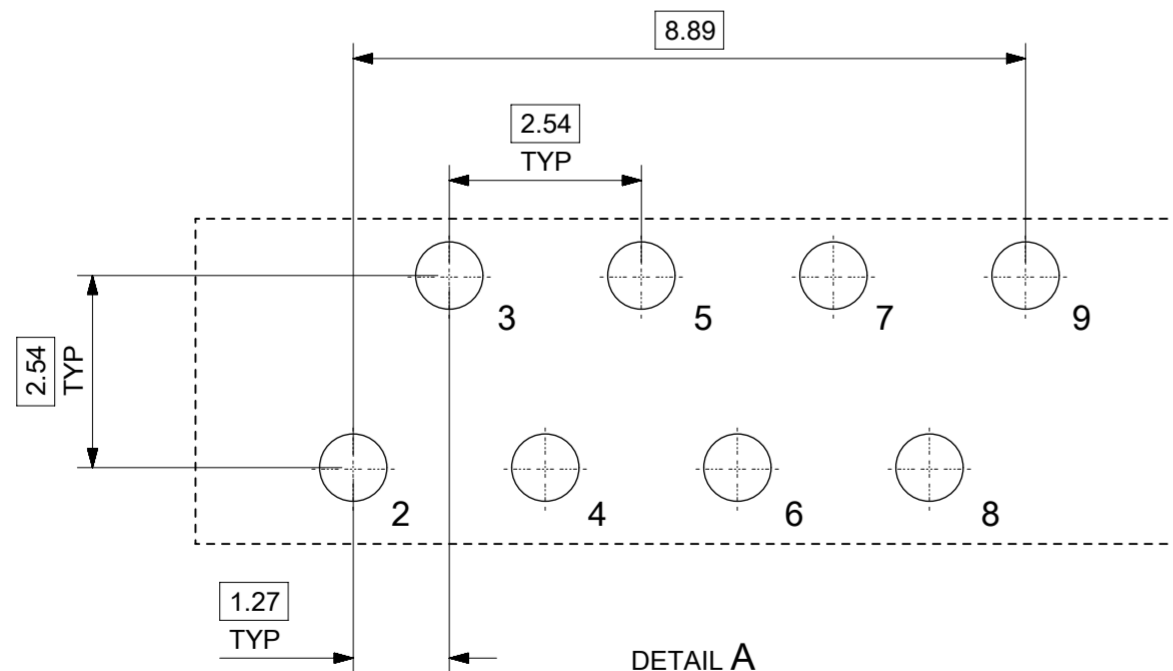


- NOTES:
- SHIELD MATERIAL: 0.17 mm THICK BRASS PRE-PLATED WITH NICKEL
SOLDER TABS POST DIPPED WITH MIN 1.27 μm TIN
 - HOUSING MATERIAL: LCP, BLACK, UL 94V-0
 - TERMINALS MATERIAL: PHOSPHOR BRONZE
RJ45 CONTACTS PLATING: BASE NICKEL PLATED WITH GOLD
FLASH OVER PALLADIUM NICKEL. REFER TO 934620001 PSP
PHY SOLDER TAILS: COPPER ALLOY
 - MATING INTERFACE ACCORDING TO IEC 60603-7 & TIA-1096-A
 - PRODUCT SPECIFICATION: 934620001 PSP
 - PACKAGING SPECIFICATION: 934620001 PSK - TRAY
 - STAND OFF TO SYSTEM BOARD 0.30 mm MIN
 - RECOMMENDED PCB THICKNESS: 1.57 mm
 - SHIELD: AVOID ROUTING TRACES
OR PLACING ANY VIAS BELOW THESE AREAS
 - AREA FOR PICK AND PLACE: 5.0 mm X 8.0 mm
 - INSCRIPTION MARKED BY LASER:
1st : MOLEX
2nd : P/N (SEE BOM)
 - INSCRIPTION MARKED BY LASER:
DATE CODE(DAY/WEEK/YEAR)
 - MATERIAL COMPLIANT TO RoHS DIRECTIVE 2002/95/EC

THIS DRAWING CONTAINS INFORMATION THAT IS PROPRIETARY TO MOLEX ELECTRONIC TECHNOLOGIES, LLC AND SHOULD NOT BE USED WITHOUT WRITTEN PERMISSION		GENERAL TOLERANCES (UNLESS SPECIFIED)		DIMENSION UNITS	SCALE	molex	
mm		3:1		DRWN BY DATE			
ANGULAR TOL ± 2.0 °		4 PLACES ±		KREILLY 2015/10/02		INV MX-MAG 6 CORE FE W/SHIELD	
3 PLACES ±		2 PLACES ± 0.1		CHK'D BY DATE			
1 PLACE ± 0.2		0 PLACES ±		DBYRNES 2015/09/12		PRODUCT CUSTOMER DRAWING	
DRAFT WHERE APPLICABLE MUST REMAIN WITHIN DIMENSIONS		DRAWING SIZE		THIRD ANGLE PROJECTION			
A2		A2		STGRIFFIN 2015/11/19		93635 SEE TABLE ON SHEET 2 GENERAL MARKET	
REVISED		EC NO: 116686		DOCUMENT NUMBER		DOC TYPE DOC PART SHEET NUMBER	
2017/05/09		2017/09/12		936350001		000 1 OF 3	
DRWN: KREILLY		CHKD: DSHEA		APPR BY		DATE	
2017/09/26		2017/09/26		DBYRNES		2015/09/12	



SUGGESTED BOARD LAYOUT
GIGABIT VERSION
COMPONENT SIDE
ALL DIMS REFERENCE DIMS



DETAIL A
SCALE 10:1

PIN CONFIGURATION
FOR FAST ETHERNET VERSION

PART NUMBER	LEFT LED	RIGHT LED
93635-8314	YELLOW	GREEN

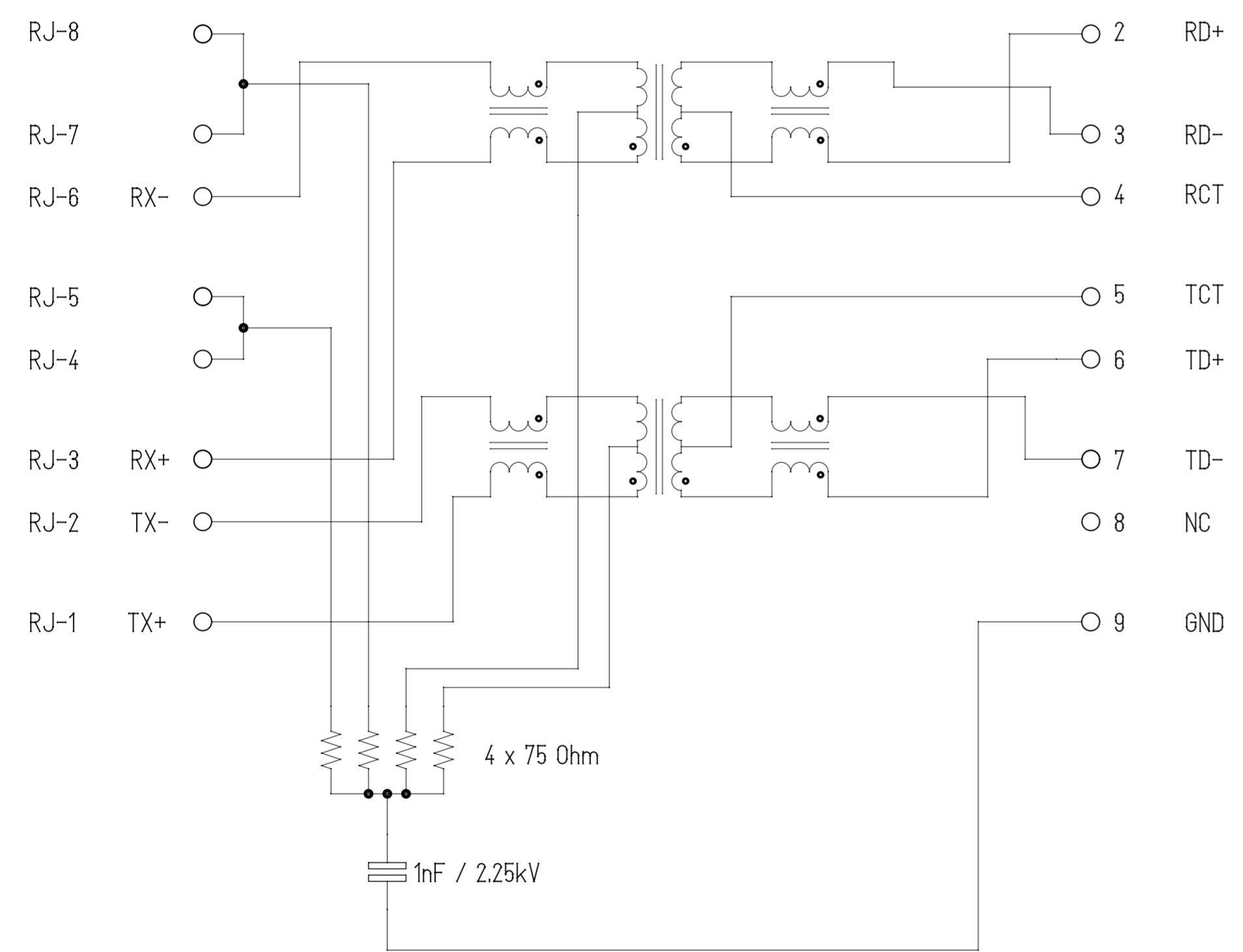
THIS DRAWING CONTAINS INFORMATION THAT IS PROPRIETARY TO MOLEX ELECTRONIC TECHNOLOGIES, LLC AND SHOULD NOT BE USED WITHOUT WRITTEN PERMISSION													
REVISED	EC NO: 116686	2017/05/09	GENERAL TOLERANCES (UNLESS SPECIFIED)	DIMENSION UNITS	SCALE	molex INV MX-MAG 6 CORE FE W/SHIELD							
	DRWN: KREILLY	2017/09/12	ANGULAR TOL ± 2.0 °	mm	5:1								
	CHKD: DSHEA	2017/09/26	4 PLACES ±	DRWN BY	DATE	KREILLY 2015/10/02							
	APP: DBYRNES		3 PLACES ±	CHK'D BY	DATE	DBYRNES 2015/09/12							
			2 PLACES ± 0.1	APPR BY	DATE	STGRIFFIN 2015/11/19							
		1 PLACE ± 0.2	DRAFT WHERE APPLICABLE MUST REMAIN WITHIN DIMENSIONS	DRAWING SIZE	THIRD ANGLE PROJECTION	SERIES		MATERIAL NUMBER		CUSTOMER			
B		0 PLACES ±	A2	A2	THIRD ANGLE PROJECTION	93635	SEE TABLE	GENERAL MARKET					
						DOCUMENT NUMBER	936350001	DOC TYPE	PSD	DOC PART	000	SHEET NUMBER	2 OF 3

RJ-45 CONTACTS

WIRE-SIDE / RJ-45

ETHERNET MAGNETICS

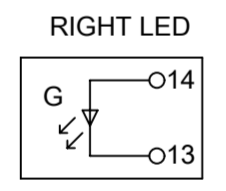
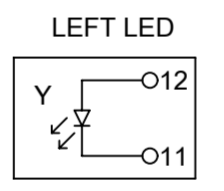
PHY-SIDE / PCB SIDE



Description	Value	
OCL @100 kHz, 0.1 V 8 mA DC bias (-40°C to +85°C)	350 µH min.	
Turns ratio	1CT:1CT	
Transmission characteristics @ 25°C, all four pairs		
Insertion Loss		
Frequency f, (MHz)	Limits (dB max.)	Typical Values (dB max.)
1.0-9.9	0.4+0.1*log(f)	0.5 @ 10 MHz
10-49.9	0.5+0.3*log(f/10)	0.7 @ 50 MHz
50-79.9	1+1.4*log(f/80)	1.0 @ 80 MHz
80-100	1.3+3*log(f/100)	1.3 @ 100 MHz
Return Loss		
Frequency f, (MHz)	Limits (dB min.)	Typical Values (dB min.)
1.0-39.9	18	18 @ 40 MHz
40-100	12-20*log(f/80)	10 @ 100 MHz
CMR		
Frequency f, (MHz)	Limits (dB min.)	Typical Values (dB min.)
1.0-100	30	30 @ 100 MHz
Next		
Frequency f, (MHz)	Limits (dB min.)	Typical Values (dB min.)
1.0-39.9	35	35 @ 40 MHz
40-100	33-20*log(f/50)	27 @ 100 MHz
Isolation PHY to wire side	2.25 kVDC/60sec	

ETHERNET TERMINALS

Shield



THIS DRAWING CONTAINS INFORMATION THAT IS PROPRIETARY TO MOLEX ELECTRONIC TECHNOLOGIES, LLC AND SHOULD NOT BE USED WITHOUT WRITTEN PERMISSION

REVISED EC NO: 116686 DRWN: KREILLY CHKD: DSHEA REV APPR: DBYRNES	2017/05/09	GENERAL TOLERANCES (UNLESS SPECIFIED)	DIMENSION UNITS	SCALE	molex INV MX-MAG 6 CORE FE W/SHIELD		
	2017/09/12	(UNLESS SPECIFIED)	mm	1:1			
	2017/09/26	ANGULAR TOL ± 2.0 °	DRWN BY	DATE	PRODUCT CUSTOMER DRAWING		
		4 PLACES ±	KREILLY	2015/10/02			
		3 PLACES ±	CHK'D BY	DATE	SERIES MATERIAL NUMBER CUSTOMER 93635 SEE TABLE ON SHEET 2 GENERAL MARKET		
	2 PLACES ± 0.1	DBYRNES	2015/09/12				
	1 PLACE ± 0.2	APPR BY	DATE	DOCUMENT NUMBER DOC TYPE DOC PART SHEET NUMBER 936350001 PSD 000 3 OF 3			
	0 PLACES ±	STGRIFFIN	2015/11/19				
	DRAFT WHERE APPLICABLE MUST REMAIN WITHIN DIMENSIONS	DRAWING SIZE	THIRD ANGLE PROJECTION				
		A2					