



Chipsmall Limited consists of a professional team with an average of over 10 year of expertise in the distribution of electronic components. Based in Hongkong, we have already established firm and mutual-benefit business relationships with customers from,Europe,America and south Asia,supplying obsolete and hard-to-find components to meet their specific needs.

With the principle of “Quality Parts,Customers Priority,Honest Operation,and Considerate Service”,our business mainly focus on the distribution of electronic components. Line cards we deal with include Microchip,ALPS,ROHM,Xilinx,Pulse,ON,Everlight and Freescale. Main products comprise IC,Modules,Potentiometer,IC Socket,Relay,Connector.Our parts cover such applications as commercial,industrial, and automotives areas.

We are looking forward to setting up business relationship with you and hope to provide you with the best service and solution. Let us make a better world for our industry!



## Contact us

Tel: +86-755-8981 8866 Fax: +86-755-8427 6832

Email & Skype: info@chipsmall.com Web: www.chipsmall.com

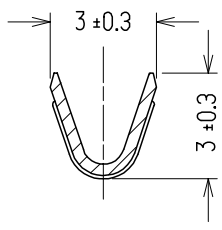
Address: A1208, Overseas Decoration Building, #122 Zhenhua RD., Futian, Shenzhen, China



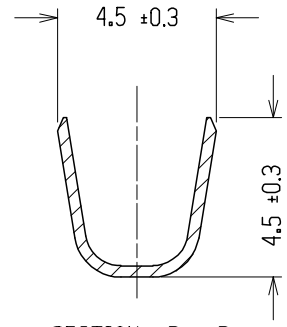
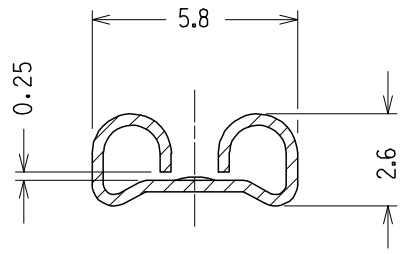
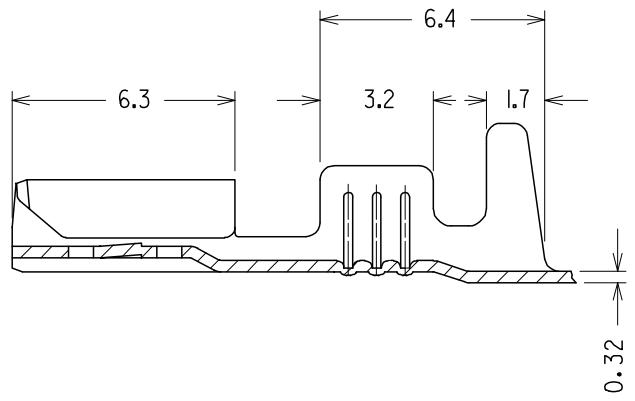
7 6 5 4 3 2 1

E  
D  
C  
B  
A

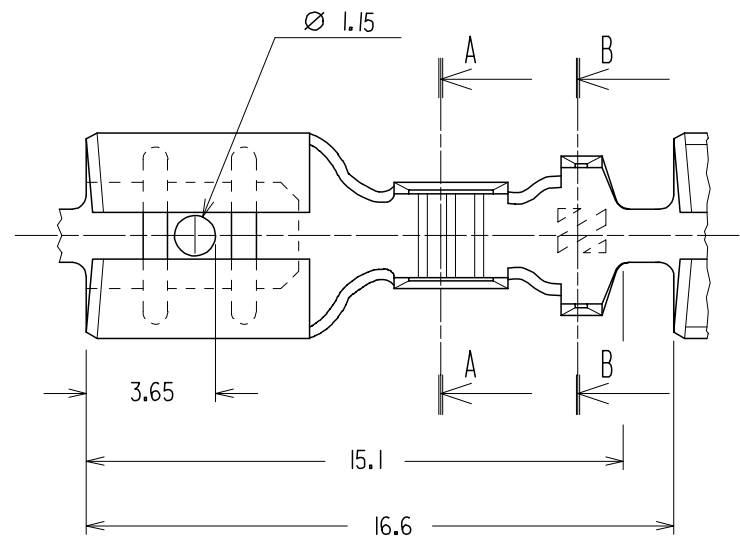
E  
D  
C  
B  
A



SECTION A - A



SECTION B - B



CODICE P/N	MATERIALE MATERIAL	FINITURA PLATING
94030-4530	OTTONE	GREGGIO/ PLAIN
94030-4531	BRASS	STAGNATO/ TIN

SPQ = 36000 pz.

Std. Descr.: FEM TERM 4,8/0,5 BRS TIN 05-1

ENTER DESCRIPTION EC NO: Z2005-0195 DRWN:FGOTTARD 2005/06/16 CHKD:RSANDANO 2005/06/16 APPR:GZUIN 2005/06/17 A2	QUALITY SYMBOLS ▽=0 ◻=0	GENERAL TOLERANCES (UNLESS SPECIFIED)		DIMENSION STYLE MM ONLY		SCALE 5:1	DESIGN UNITS METRIC	FIRST ANGLE PROJECTION		
		4 PLACES ± --- ± ---	3 PLACES ± --- ± ---	2 PLACES ± 0.2 ± ---	1 PLACE ± 0.1 ± ---	DRAWN BY FGOTTARDO	DATE 1990/01/15	TITLE QIK KONNECT RECEPTACLE FOR 4,8X0,5 TABS WIRE RANGE 0,5-1,0 MMQ		
		ANGULAR ± 2 °				CHECKED BY	DATE	MOLEX INCORPORATED		
		DRAFT WHERE APPLICABLE MUST REMAIN WITHIN DIMENSIONS				APPROVED BY MPREVIATO	DATE 1990/01/15	MATERIAL NO. SEE CHART	DOCUMENT NO. SD-94030-062	SHEET NO. 1 OF 1

6 5 4 3 2 1