



Chipsmall Limited consists of a professional team with an average of over 10 year of expertise in the distribution of electronic components. Based in Hongkong, we have already established firm and mutual-benefit business relationships with customers from,Europe,America and south Asia,supplying obsolete and hard-to-find components to meet their specific needs.

With the principle of “Quality Parts,Customers Priority,Honest Operation,and Considerate Service”,our business mainly focus on the distribution of electronic components. Line cards we deal with include Microchip,ALPS,ROHM,Xilinx,Pulse,ON,Everlight and Freescale. Main products comprise IC,Modules,Potentiometer,IC Socket,Relay,Connector.Our parts cover such applications as commercial,industrial, and automotives areas.

We are looking forward to setting up business relationship with you and hope to provide you with the best service and solution. Let us make a better world for our industry!



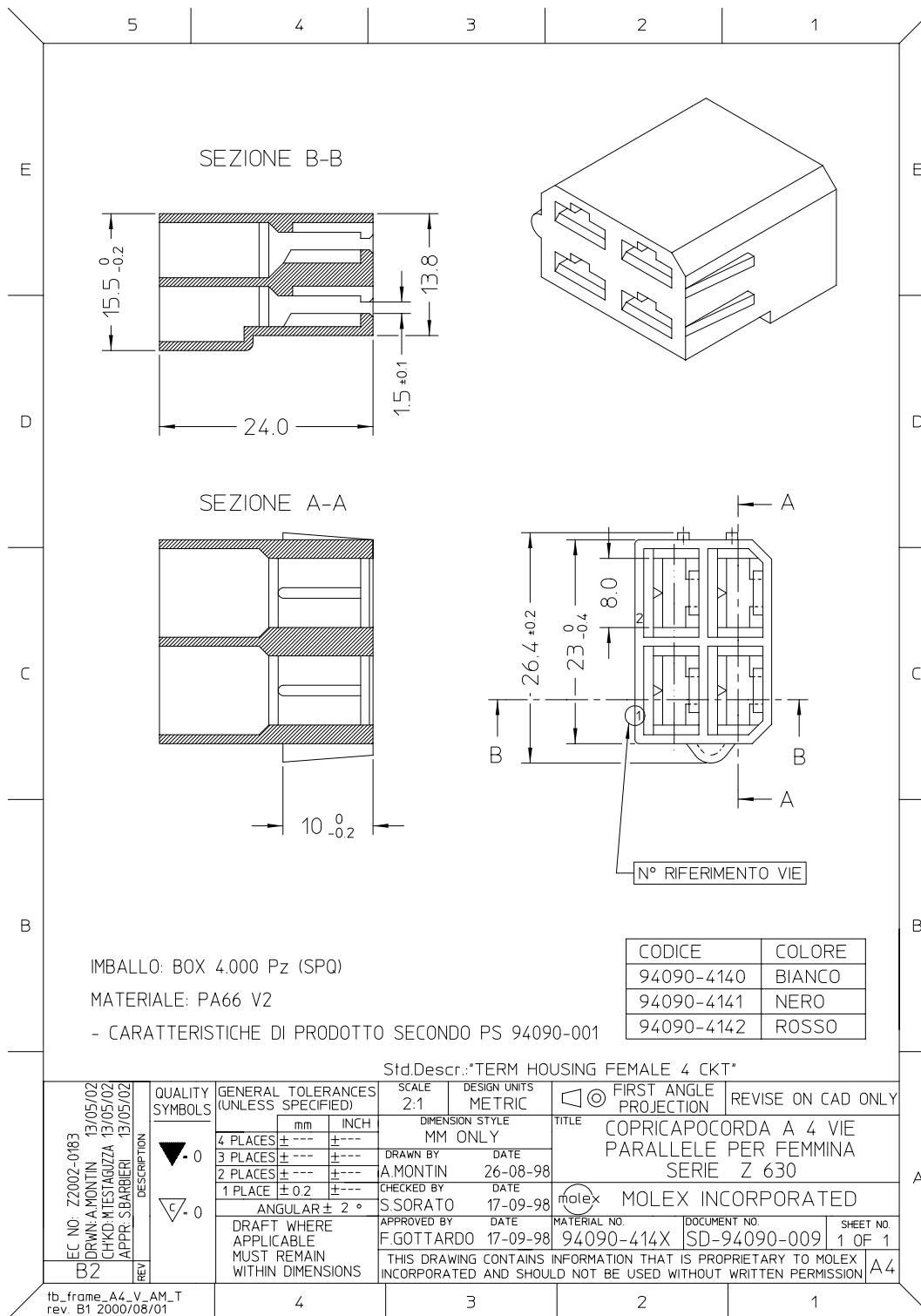
## Contact us

Tel: +86-755-8981 8866 Fax: +86-755-8427 6832

Email & Skype: info@chipsmall.com Web: www.chipsmall.com

Address: A1208, Overseas Decoration Building, #122 Zhenhua RD., Futian, Shenzhen, China





IMBALLO: BOX 4.000 Pz (SPQ)

MATERIALE: PA66 V2

- CARATTERISTICHE DI PRODOTTO SECONDO PS 94090-001

CODICE	COLORE
94090-4140	BIANCO
94090-4141	NERO
94090-4142	ROSSO

Std.Descr.: "TERM HOUSING FEMALE 4 CKT"

EC NO: Z2002-0183 DRAWN BY: A.MONTIN 13/05/02 CHKD BY: M.TEAGUZZA 13/05/02 APPR: S.BARBIERI 13/05/02 B2 REV	QUALITY SYMBOLS	GENERAL TOLERANCES (UNLESS SPECIFIED)	SCALE 2:1	DESIGN UNITS METRIC	FIRST ANGLE PROJECTION	REVISE ON CAD ONLY
	▽ 0 ▽ 0.2 ANGULAR ± 2°	4 PLACES ± 0.15	mm INCH	DIMENSION STYLE MM ONLY		TITLE COPRICAPOCORDA A 4 VIE PARALLELE PER FEMMINA SERIE Z 630 MOLEX INCORPORATED
		3 PLACES ± 0.2		DRAWN BY A.MONTIN	DATE 26-08-98	
		2 PLACES ± 0.3		CHECKED BY S.SORATO	DATE 17-09-98	
	1 PLACE ± 0.2		APPROVED BY F.GOTTARDO	DATE 17-09-98	MATERIAL NO. 94090-414X	DOCUMENT NO. SD-94090-009
		DRAFT WHERE APPLICABLE MUST REMAIN WITHIN DIMENSIONS	THIS DRAWING CONTAINS INFORMATION THAT IS PROPRIETARY TO MOLEX INCORPORATED AND SHOULD NOT BE USED WITHOUT WRITTEN PERMISSION		SHEET NO. 1 OF 1	A4