



Chipsmall Limited consists of a professional team with an average of over 10 year of expertise in the distribution of electronic components. Based in Hongkong, we have already established firm and mutual-benefit business relationships with customers from,Europe,America and south Asia,supplying obsolete and hard-to-find components to meet their specific needs.

With the principle of “Quality Parts,Customers Priority,Honest Operation,and Considerate Service”,our business mainly focus on the distribution of electronic components. Line cards we deal with include Microchip,ALPS,ROHM,Xilinx,Pulse,ON,Everlight and Freescale. Main products comprise IC,Modules,Potentiometer,IC Socket,Relay,Connector.Our parts cover such applications as commercial,industrial, and automotives areas.

We are looking forward to setting up business relationship with you and hope to provide you with the best service and solution. Let us make a better world for our industry!



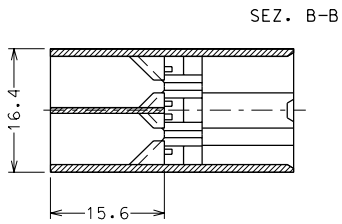
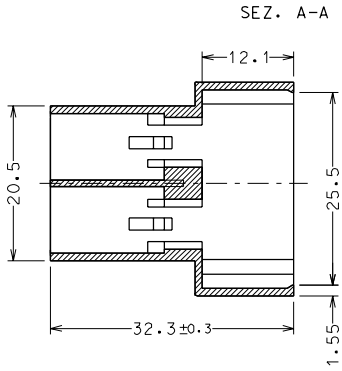
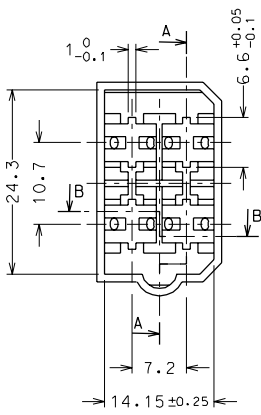
## Contact us

Tel: +86-755-8981 8866 Fax: +86-755-8427 6832

Email & Skype: info@chipsmall.com Web: www.chipsmall.com

Address: A1208, Overseas Decoration Building, #122 Zhenhua RD., Futian, Shenzhen, China





NOTE:  
 DA USARSI CON PORTAFEMMINE  
 COD. 94090-4140 SENZA AGGANCI O  
 94090-4150 CON AGGANCI

MATERIALE: NYLON 6.6 UL94 V2  
 CONFEZIONE: 2000 PEZZI (S.P.O.) IN SACCHETTO  
 POSTI IN UNA SCATOLA DI CARTONE

Std. Descr.: HSG FOR 6.3 M TERM 4 CKT

| REV  | DESCRIPTION | QUALITY SYMBOLS                    | GENERAL TOLERANCES (UNLESS SPECIFIED) |      | SCALE  | DESIGN UNITS   | FIRST ANGLE PROJECTION      | DIMENSIONS:   |   |                      | SHT | REV |
|--|-------------|------------------------------------|---------------------------------------|------|--|--|-----------------------------|---|---|----------------------|-----|-----|
|  |             |                                    | mm                                    | INCH | 2:1  | <input checked="" type="checkbox"/> mm <input type="checkbox"/> INCH       |                             | <input type="checkbox"/> mm <input type="checkbox"/> INCH | <input type="checkbox"/> mm <input type="checkbox"/> INCH | REVISION ON CAD ONLY |     |     |
|  |             |                                    | mm                                    |      | INCH   |  |                             | mm ONLY   |   |                      |     |     |
| A2   |             | MAJOR W<br>SIGNIF. S<br>CRITICAL C | 4 PLACES ±0.                          | ±.   | DRAWN BY & DATE<br>F. Gottardo 88/08/29  | TITLE:<br>COPRICAPOCORDA A 4 VIE<br>PARALLELE PER MASCHIO<br>DA 6.3X0.8 mm | MOLEX INCORPORATED          |   |   |                      |     |     |
|  |             |                                    | 3 PLACES ±0.                          | ±.   | CHECKED BY & DATE  |  |                             |   |   |                      |     |     |
|  |             |                                    | 2 PLACES ±0.10                        | ±.   | APPROVED BY & DATE<br>M. Previeto 88/08/29   |  |                             |   |   |                      |     |     |
|  |             |                                    | 1 PLACE ±0.20                         | ±.   | CAD FILENAME<br>SD-94090-023.S01   | MATERIAL NO.<br>94090-4160   | DRAWING NO.<br>SD-94090-024 |   |   | SHEET NO.<br>1/1     |     |     |
| DRAFT WHERE APPLICABLE MUST REMAIN WITHIN DIMENSIONS |             |                                    |                                       |      | THIS DRAWING CONTAINS INFORMATION THAT IS PROPRIETARY TO MOLEX INCORPORATED AND SHOULD NOT BE USED WITHOUT WRITTEN PERMISSION. |  |                             |   |   | SIZE<br>A4           |     |     |