



Chipsmall Limited consists of a professional team with an average of over 10 year of expertise in the distribution of electronic components. Based in Hongkong, we have already established firm and mutual-benefit business relationships with customers from,Europe,America and south Asia,supplying obsolete and hard-to-find components to meet their specific needs.

With the principle of “Quality Parts,Customers Priority,Honest Operation,and Considerate Service”,our business mainly focus on the distribution of electronic components. Line cards we deal with include Microchip,ALPS,ROHM,Xilinx,Pulse,ON,Everlight and Freescale. Main products comprise IC,Modules,Potentiometer,IC Socket,Relay,Connector.Our parts cover such applications as commercial,industrial, and automotives areas.

We are looking forward to setting up business relationship with you and hope to provide you with the best service and solution. Let us make a better world for our industry!



## Contact us

Tel: +86-755-8981 8866 Fax: +86-755-8427 6832

Email & Skype: [info@chipsmall.com](mailto:info@chipsmall.com) Web: [www.chipsmall.com](http://www.chipsmall.com)

Address: A1208, Overseas Decoration Building, #122 Zhenhua RD., Futian, Shenzhen, China



10

9

8

7

6

5

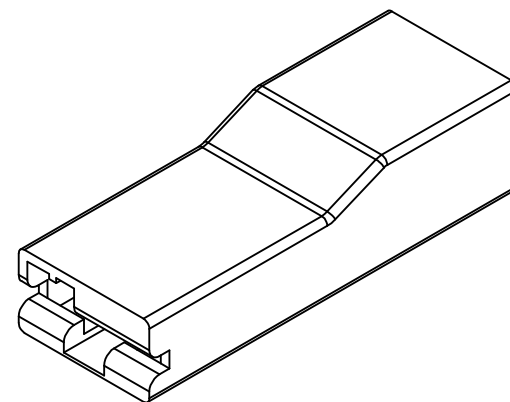
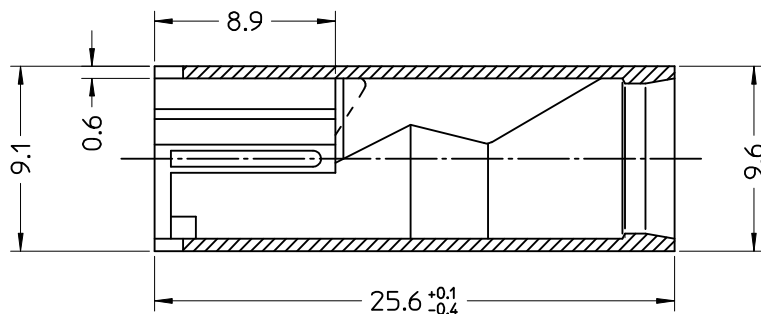
4

3

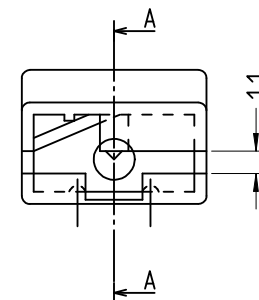
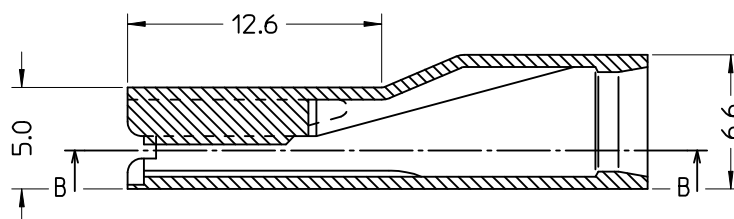
2

1

## SEZIONE B-B



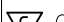
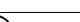


## SEZIONE A-A



CODICE P/N	COLORE COLOUR	MATERIALE sec. UL-94 MATERIAL ref. UL-94	CONFEZIONE PACKAGING
94090-5320	NATURALE/NATURAL	PA 6.6 V2	12.000 PZ IN SCATOLA (SPQ) 12.000 PCS IN CARTON BOX (SPQ)
94090-5321	NERO/BLACK	PA 6.6 HB	
94090-5322	ROSSO/RED	PA 6.6 HB	
94090-5326	NERO/BLACK	PA 6.6 V0	
94090-5324	NATURALE/NATURAL	NYLON 6.6 GWT 750°C IEC 60335-1 TEST METHOD IEC 60695-2-11	

STD DESCR: HSG FOR 6.3 F TERM

EC NO: Z2008-0222 DRAWN:SBARBER CHKD:L SANTOSSO APPR:FB/SELLO	2008/06/23 2008/06/23 2008/06/24	DESCRIPTION	QUALITY SYMBOLS	GENERAL TOLERANCES (UNLESS SPECIFIED)		DIMENSION STYLE MM ONLY		SCALE 4:1	DESIGN UNITS METRIC		FIRST ANGLE PROJECTION
			 =0  =0	<div>mm</div> <div>INCH</div>	DRAWN BY LSANTESSO	DATE 1993/03/16	TITLE 1 CKT HOUSING FOR FEMALE TERMINAL SERIES Z630	 MOLEX INCORPORATED	DOCUMENT NO. SD-94090-017	SHEET NO. 1 OF 1	
				4 PLACES ± --- ± ---	CHECKED BY	DATE					
				3 PLACES ± --- ± ---	APPROVED BY MPREVIATO	DATE 1993/03/16					
				2 PLACES ± --- ± ---							
				1 PLACE ± 0.2 ± ---							
ANGULAR ± 3 °		MATERIAL NO.		SEE TABLE							
DRAFT WHERE APPLICABLE MUST REMAIN WITHIN DIMENSIONS		SIZE A3		THIS DRAWING CONTAINS INFORMATION THAT IS PROPRIETARY TO MOLEX INCORPORATED AND SHOULD NOT BE USED WITHOUT WRITTEN PERMISSION							

9

8

7

6

5

4

3

2

1