



Chipsmall Limited consists of a professional team with an average of over 10 year of expertise in the distribution of electronic components. Based in Hongkong, we have already established firm and mutual-benefit business relationships with customers from,Europe,America and south Asia,supplying obsolete and hard-to-find components to meet their specific needs.

With the principle of “Quality Parts,Customers Priority,Honest Operation,and Considerate Service”,our business mainly focus on the distribution of electronic components. Line cards we deal with include Microchip,ALPS,ROHM,Xilinx,Pulse,ON,Everlight and Freescale. Main products comprise IC,Modules,Potentiometer,IC Socket,Relay,Connector.Our parts cover such applications as commercial,industrial, and automotives areas.

We are looking forward to setting up business relationship with you and hope to provide you with the best service and solution. Let us make a better world for our industry!



## Contact us

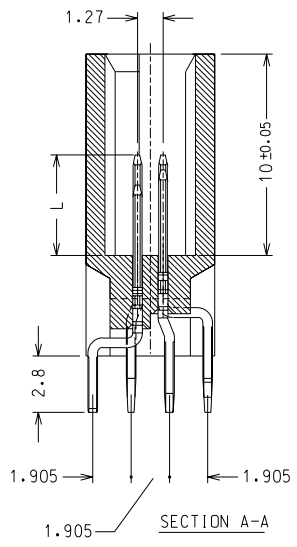
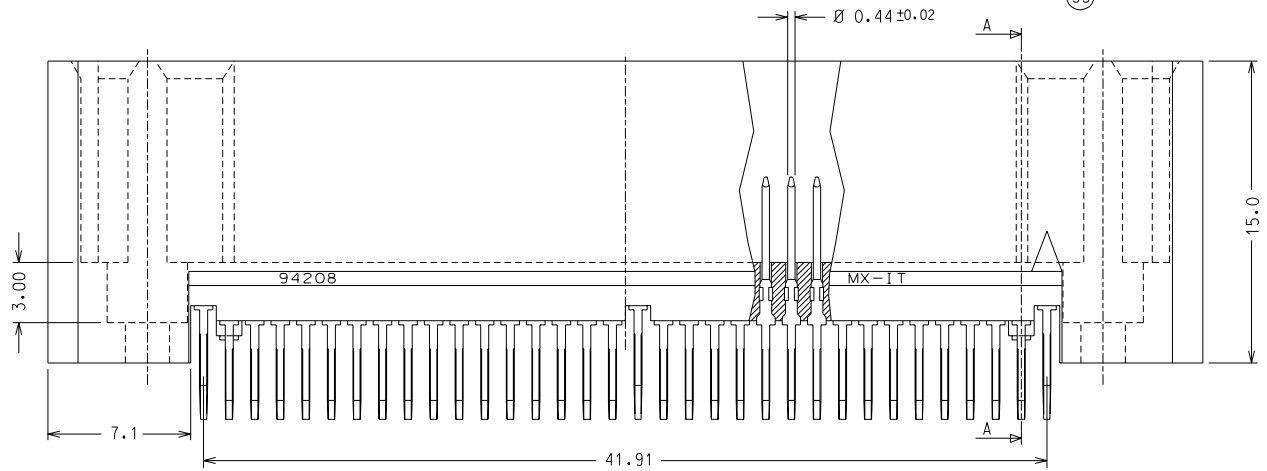
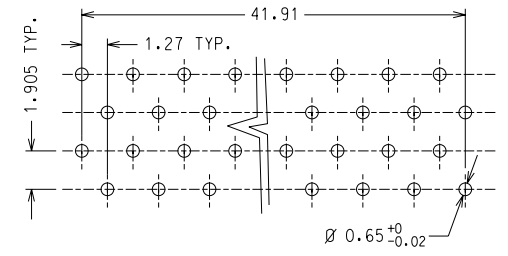
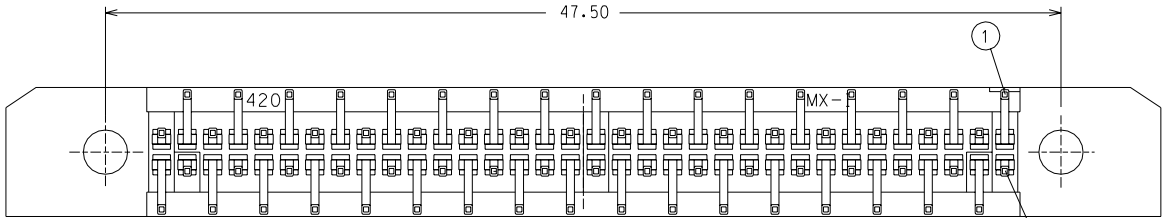
Tel: +86-755-8981 8866 Fax: +86-755-8427 6832

Email & Skype: info@chipsmall.com Web: www.chipsmall.com

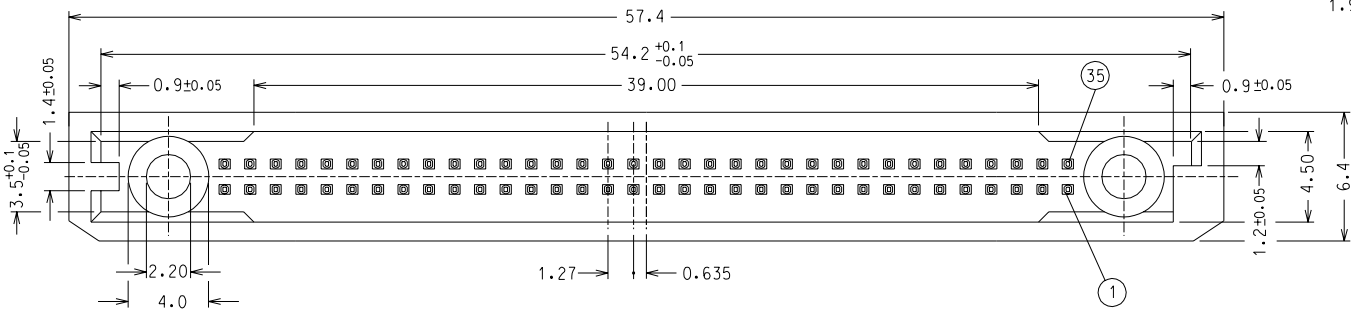
Address: A1208, Overseas Decoration Building, #122 Zhenhua RD., Futian, Shenzhen, China



8 7 6 5 4 3 2 1



| PIN NUMBER       | LENGTH L ± 0.1 |
|------------------|----------------|
| 36,67            | 3.5            |
| ALL OTHER PINS   | 4.25           |
| 1,17,34,35,51,68 | 5.0            |



MATERIAL:  
 HOUSING: PA 46 30% G.F. UL94 V-0  
 CONTACT: PHOSPHOR BRONZE  
 PLATING: 0.13 µ min. Au over 1 µ min. Pd Ni alloy over 1.27 µ min. Ni  
 Solder area: Sn 3.75 µ min. over 1.27 µ Ni min.

F  
E  
D  
C  
B  
A

F  
E  
D  
C  
B  
A

8 7

ECN Z2004-0231 06-05-04  
 Mod. materiale G.F.  
 A2  
 ECN Z2004-0069 26-11-03  
 Mod. descr. finitura G.F.  
 A1  
 LTR

| DIMENSIONS SHOWN (METRIC) INCH                     |              |
|--|--------------|
| UNLESS OTHERWISE SPECIFIED TOLERANCES: ANGULAR ± / |              |
| INCH   | (METRIC)     |
| 3 PLACE ±  |              |
| 2 PLACE ±  | ± 0.1        |
| 1 PLACE  | ± 0.2        |
| DESIGN DIMENSION (PRIMARY)                         | Ø (MM) □ IN  |
| EQUIVALENT DIMENSION (SECONDARY)                   | □ (MM) □ IN. |

DRWG BY  
 Gottardo  
 CHK'D BY  
 APP'D BY  
 Previeto  
 SCALE  
 4:1

| REVISE ONLY ON CAD SYSTEM  |  | SH.       | REV. |
|--|--|-----------|------|
| CAD/CAM FILENAME<br>9420800S   | THIS DRAWING CONTAINS INFORMATION THAT IS PROPRIETARY TO MOLEX INC AND SHOULD NOT BE USED WITHOUT WRITTEN PERMISSION |           |      |
| TITLE<br>MEMORY CARD CONNECTOR 68 CKT<br>DUAL ROW - STRAIGHT HEADER<br>ACCORDING TO JEIDA VER. 4 | SHEET NO. DATE<br>1/1 10-09-91   |           |      |
| PART NO.<br>94208-0011   | DWG NO.<br>SD-94208-001  | SIZE<br>B |      |

