



Chipsmall Limited consists of a professional team with an average of over 10 year of expertise in the distribution of electronic components. Based in Hongkong, we have already established firm and mutual-benefit business relationships with customers from,Europe,America and south Asia,supplying obsolete and hard-to-find components to meet their specific needs.

With the principle of “Quality Parts,Customers Priority,Honest Operation,and Considerate Service”,our business mainly focus on the distribution of electronic components. Line cards we deal with include Microchip,ALPS,ROHM,Xilinx,Pulse,ON,Everlight and Freescale. Main products comprise IC,Modules,Potentiometer,IC Socket,Relay,Connector.Our parts cover such applications as commercial,industrial, and automotives areas.

We are looking forward to setting up business relationship with you and hope to provide you with the best service and solution. Let us make a better world for our industry!



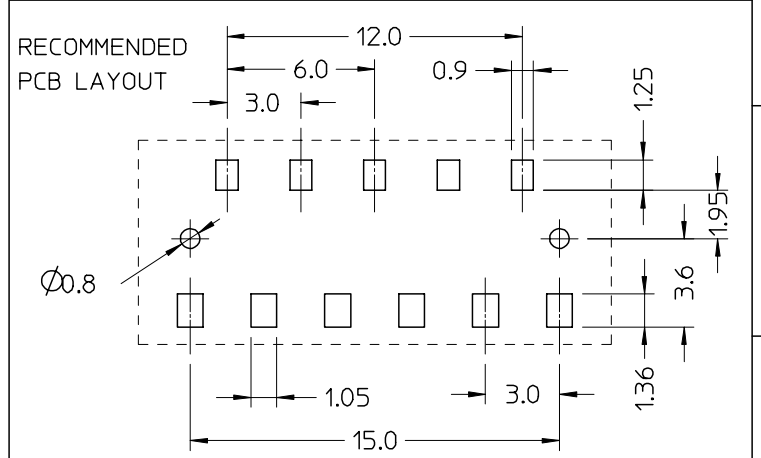
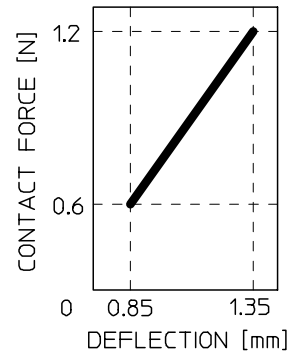
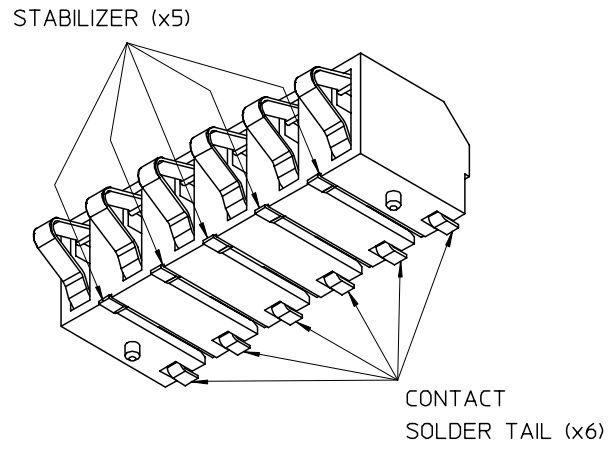
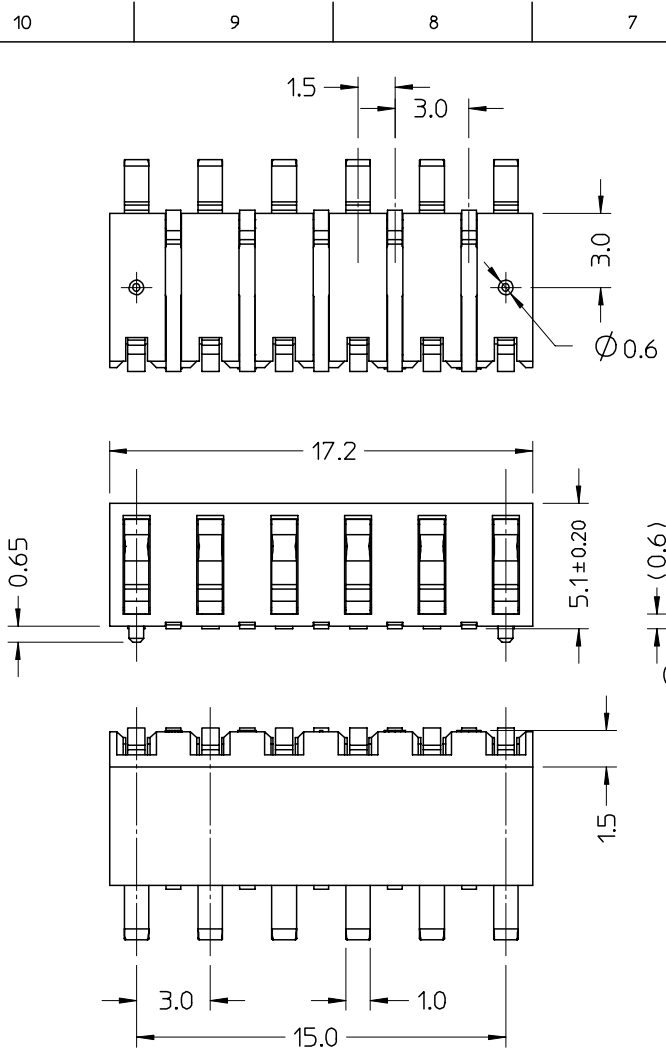
Contact us

Tel: +86-755-8981 8866 Fax: +86-755-8427 6832

Email & Skype: info@chipsmall.com Web: www.chipsmall.com

Address: A1208, Overseas Decoration Building, #122 Zhenhua RD., Futian, Shenzhen, China





- NOTES:
- MATERIALS:
 - HOUSING: PA6T 30%GF UL94 V-0 BLACK
 - CONTACTS: BERYLLIUM COPPER
 - STABILIZERS: BERYLLIUM COPPER
 - PLATING:
 - CONTACT AREA: 0.5µm MIN SELECTIVE Au
 - SOLDER TAIL : 3µm MIN SELECTIVE Sn
 - OVERALL: 1.27µm MIN Ni
 - PACKAGING: SEE DRAWING PK-94322-001

Std. Descr.: BATTERY CONNECTOR SMT 6 CKT

GENERAL TOLERANCES: ±0.05

EC NO: Z2007-0007 DRWN:RSANDANO06/07/12 CHKD: 2006/07/12 APPR: SBARBIE 2006/07/19	QUALITY SYMBOLS	GENERAL TOLERANCES (UNLESS SPECIFIED)	SCALE 5:1	DESIGN UNITS METRIC	FIRST ANGLE PROJECTION	REVISE ON CAD ONLY																		
	▴ - 0 ▽ - 0	<table border="1"> <thead> <tr> <th></th> <th>mm</th> <th>INCH</th> </tr> </thead> <tbody> <tr> <td>4 PLACES</td> <td>±---</td> <td>±---</td> </tr> <tr> <td>3 PLACES</td> <td>±---</td> <td>±---</td> </tr> <tr> <td>2 PLACES</td> <td>±0.25</td> <td>±---</td> </tr> <tr> <td>1 PLACE</td> <td>±0.3</td> <td>±---</td> </tr> <tr> <td colspan="3">ANGULAR ±---°</td> </tr> </tbody> </table>		mm	INCH	4 PLACES	±---	±---	3 PLACES	±---	±---	2 PLACES	±0.25	±---	1 PLACE	±0.3	±---	ANGULAR ±---°			DIMENSION STYLE MM ONLY	TITLE	6 CKT 3.0 PITCH BATTERY CONNECTOR	
			mm	INCH																				
		4 PLACES	±---	±---																				
3 PLACES	±---	±---																						
2 PLACES	±0.25	±---																						
1 PLACE	±0.3	±---																						
ANGULAR ±---°																								
DRAFT WHERE APPLICABLE MUST REMAIN WITHIN DIMENSIONS	APPROVED BY SBARBIE 2006/07/12	DATE 2006/07/12	MATERIAL NO. 94322-5006	DOCUMENT NO. SD-94322-001	SHEET NO. 1 OF 1																			
REV	THIS DRAWING CONTAINS INFORMATION THAT IS PROPRIETARY TO MOLEX INCORPORATED AND SHOULD NOT BE USED WITHOUT WRITTEN PERMISSION					A3																		