



Chipsmall Limited consists of a professional team with an average of over 10 year of expertise in the distribution of electronic components. Based in Hongkong, we have already established firm and mutual-benefit business relationships with customers from,Europe,America and south Asia,supplying obsolete and hard-to-find components to meet their specific needs.

With the principle of “Quality Parts,Customers Priority,Honest Operation,and Considerate Service”,our business mainly focus on the distribution of electronic components. Line cards we deal with include Microchip,ALPS,ROHM,Xilinx,Pulse,ON,Everlight and Freescale. Main products comprise IC,Modules,Potentiometer,IC Socket,Relay,Connector.Our parts cover such applications as commercial,industrial, and automotives areas.

We are looking forward to setting up business relationship with you and hope to provide you with the best service and solution. Let us make a better world for our industry!



Contact us

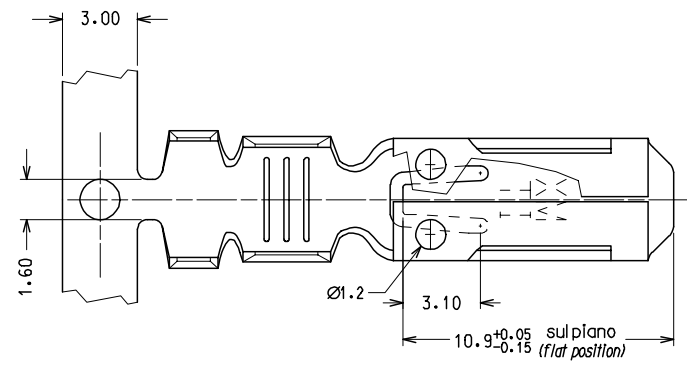
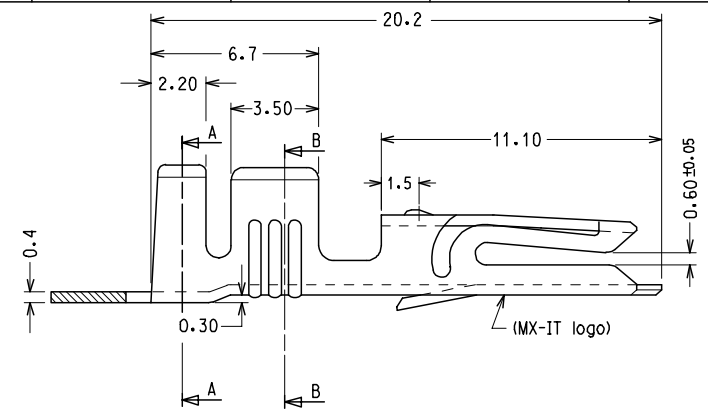
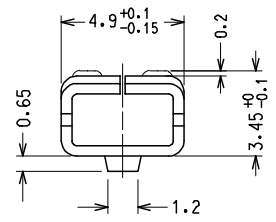
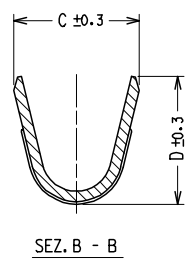
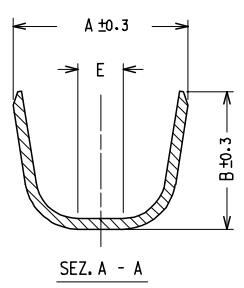
Tel: +86-755-8981 8866 Fax: +86-755-8427 6832

Email & Skype: info@chipsmall.com Web: www.chipsmall.com

Address: A1208, Overseas Decoration Building, #122 Zhenhua RD., Futian, Shenzhen, China



10 9 8 7 6 5 4 3 2 1



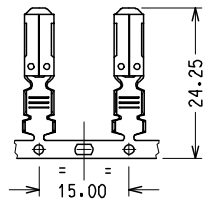
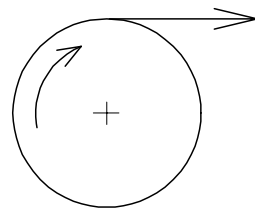
| CODICE P/N | FINITURA PLATING | MATERIALE MATERIAL | SEZ. RAME WIRE RANGE | Ø ISOLANTE INS. RANGE | DIMENSIONI | | | | | PZ./BOBINA PCS/REEL |
|--------------|------------------|---------------------------|--|-----------------------|------------|-----|-----|-----|-----|---------------------|
| | | | | | A | B | C | D | E | |
| 94518 - 0100 | GREGGIO/ PLAIN | OTTONE BRASS | 0.5 - 1.0 | 2.2 - 2.8 | 4.5 | 4.5 | 3.0 | 3.0 | / | 3000 |
| 94518 - 0101 | STAGNATO/ TIN | | | | | | | | | |
| 94518 - 0120 | GREGGIO/ PLAIN | BRONZO FOSF. PHOSP.BRONZE | 1.0 - 2.5 | 2.6 - 3.8 | 5.5 | 5.5 | 4.1 | 4.3 | / | 2500 |
| 94518 - 0121 | STAGNATO/ TIN | | | | | | | | | |
| 94518 - 0200 | GREGGIO/ PLAIN | OTTONE BRASS | 1.0 - 2.5 | 2.6 - 3.8 | 5.5 | 5.5 | 4.1 | 4.3 | / | 2500 |
| 94518 - 0201 | STAGNATO/ TIN | | | | | | | | | |
| 94518 - 0220 | GREGGIO/ PLAIN | BRONZO FOSF. PHOSP.BRONZE | PER CAVI SINGOLI E DOPPI (VEDERE FOGLIO 2/2) | — | 7.3 | 5.1 | 5.2 | 4.0 | 1.8 | 2500 |
| 94518 - 0221 | STAGNATO/ TIN | | | | | | | | | |
| 94518 - 0400 | GREGGIO/ PLAIN | OTTONE BRASS | 1.5 - 3.0 | — | 7.3 | 5.1 | 5.2 | 4.0 | 1.8 | 2500 |
| 94518 - 0401 | STAGNATO/ TIN | | | | | | | | | |
| 94518 - 0300 | GREGGIO/ PLAIN | OTTONE BRASS | 4.0 | 3.4 - 3.7 | 5.5 | 5.5 | 5.0 | 5.1 | / | 2500 |
| 94518 - 0301 | STAGNATO/ TIN | | | | | | | | | |

CONFEZIONE:
N° 5 bobine con carta intermedia per box.

PACKING:
N° 5 reels with Interleaf paper/box

Std. Descr.: HNF TERM (material-plating-wire range)

SENSO DI SVOLGIMENTO PER MINIAPPLICATORE
DIRECTION OFF REEL



| | | | |
|-------------------|---------------|------------|-------------|
| EC NO: Z2005-0129 | 2005/03/31 | 2005/03/31 | 2005/04/01 |
| DRAWN:FGOTTARD | CHKD:RSANDANO | APP:GZUIN | DESCRIPTION |

| | | |
|-----------------|-----|-----|
| QUALITY SYMBOLS | ▽=0 | ▽=0 |
|-----------------|-----|-----|

| GENERAL TOLERANCES (UNLESS SPECIFIED) | |
|--|--------------|
| | mm INCH |
| 4 PLACES | ± --- ± --- |
| 3 PLACES | ± --- ± --- |
| 2 PLACES | ± 0.10 ± --- |
| 1 PLACE | ± 0.2 ± --- |
| ANGULAR ± 2 ° | |
| DRAFT WHERE APPLICABLE MUST REMAIN WITHIN DIMENSIONS | |

| DIMENSION STYLE | |
|-----------------|--------------|
| MM ONLY | |
| DRAWN BY | DATE |
| FGOTTARD | 1992/10/01 |
| CHECKED BY | DATE |
| APPROVED BY | DATE |
| MPREVIAT | 1992/10/01 |
| MATERIAL NO. | DOCUMENT NO. |
| SEE CHART | SD-94518-005 |

| | | |
|---|--------------|------------------------|
| SCALE | DESIGN UNITS | FIRST ANGLE PROJECTION |
| 5:1 | METRIC | ⊙ □ |
| TITLE | | |
| HNF FEMALE TERMINAL FOR 6.3 X 0.8 TABS | | |
| MOLEX INCORPORATED | | |
| DOCUMENT NO. | | SHEET NO. |
| SD-94518-005 | | 1 OF 1 |
| THIS DRAWING CONTAINS INFORMATION THAT IS PROPRIETARY TO MOLEX INCORPORATED AND SHOULD NOT BE USED WITHOUT WRITTEN PERMISSION | | |

9 8 7 6 5 4 3 2 1