



Chipsmall Limited consists of a professional team with an average of over 10 year of expertise in the distribution of electronic components. Based in Hongkong, we have already established firm and mutual-benefit business relationships with customers from,Europe,America and south Asia,supplying obsolete and hard-to-find components to meet their specific needs.

With the principle of "Quality Parts,Customers Priority,Honest Operation,and Considerate Service",our business mainly focus on the distribution of electronic components. Line cards we deal with include Microchip,ALPS,ROHM,Xilinx,Pulse,ON,Everlight and Freescale. Main products comprise IC,Modules,Potentiometer,IC Socket,Relay,Connector.Our parts cover such applications as commercial,industrial, and automotives areas.

We are looking forward to setting up business relationship with you and hope to provide you with the best service and solution. Let us make a better world for our industry!



## Contact us

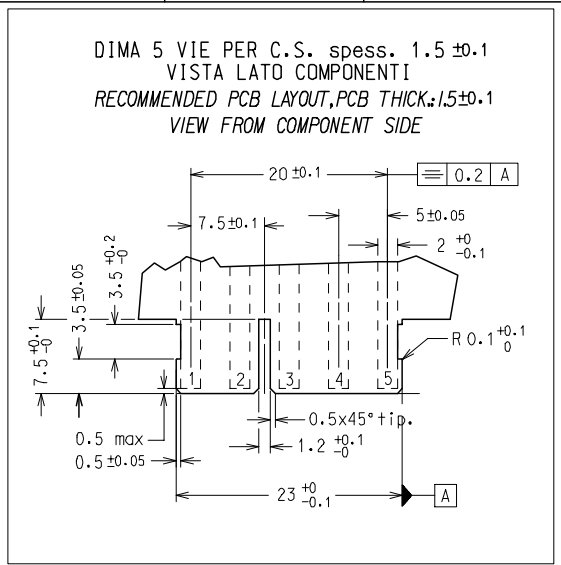
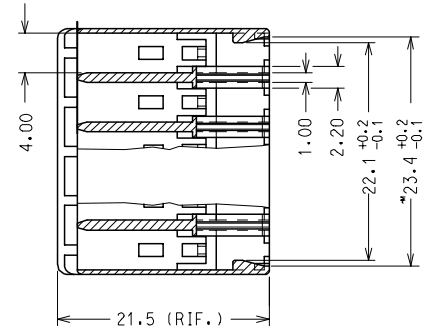
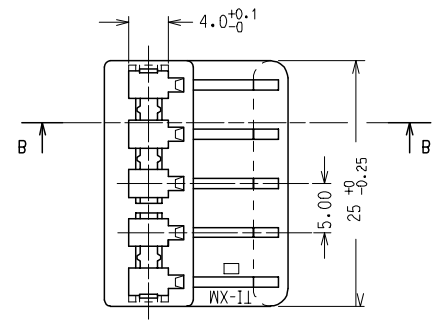
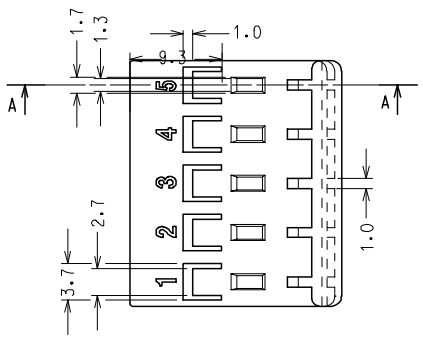
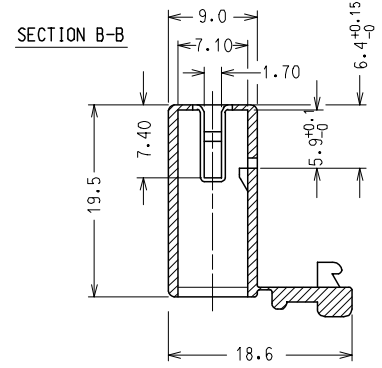
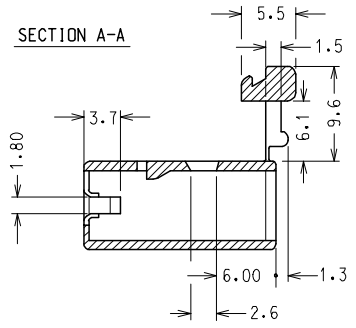
Tel: +86-755-8981 8866 Fax: +86-755-8427 6832

Email & Skype: info@chipsmall.com Web: www.chipsmall.com

Address: A1208, Overseas Decoration Building, #122 Zhenhua RD., Futian, Shenzhen, China



10 9 8 7 6 5 4 3 2 1



NOTA: LE DIMENSIONI VANNO MISURATE CON CORPI STABILIZZATI SECONDO NG 2301. (AUMENTO IN PESO DEL 2.7 %)

NOTE: PARTS SHALL BE DIMENSIONALLY CHECKED AFTER ATTAINING EQUILIBRIUM CONDITIONS E.G. 27 % INCREASE IN WEIGHT FOR HUMIDITY ABSORPTION FROM DRY STATUS.

CARATTERISTICHE PRODOTTO SECONDO PS-94529 PRODUCT CHARACTERISTICS ACCORDING TO PS-94529 E

CONFEZIONE: 4500 PZ. IN SCATOLA PACKAGING: 4500 pcs IN CARTON BOX

CODICE	P/N	MATERIAL
94529-9105		PA 66 NAT. UL94 V2 GWT 850 °C
94529-4105		NYLON 6.6 GWT 750 °C sec. IEC 60335-1 TEST METHOD IEC 60695-2-11 NATURAL

SPQ: 4500 PZ.

Descr. Std: HSG FOR FORK TERMINAL 5 CKT

ENTER DESCRIPTION EC NO: Z2006-0051 DRWN: FGOTTARDO 2005/10/12 CHKD: RSANDANO 2005/10/12 APPR: GZUIN 2005/10/14	QUALITY SYMBOLS ▽=0 ▽C=0	GENERAL TOLERANCES (UNLESS SPECIFIED)		DIMENSION STYLE		SCALE	DESIGN UNITS	FIRST ANGLE PROJECTION
				MM ONLY		2:1	METRIC	
				DRAWN BY DATE		TITLE		
				CHECKED BY DATE		5 CKT HOUSING FOR STRAIGHT FORK TERMINAL		
A1	REV	1 PLACE ±0.2 ±---		APPROVED BY DATE		MOLEX MOLEX INCORPORATED		SHEET NO. 1 OF 1
		2 PLACES ±0.1 ±---		GZUIN 2000/11/21		DOCUMENT NO. SD-94529-023		
		3 PLACES ±---		MATERIAL NO.				
		4 PLACES ±---		DRAWN BY DATE				
		ANGULAR ± 2 °		DATE				
		DRAFT WHERE APPLICABLE MUST REMAIN WITHIN DIMENSIONS		DATE				
				GZUIN 2000/11/21				
				MATERIAL NO.				
				DATE				
				GZUIN 2000/11/21				
				MATERIAL NO.				
				DATE				
				GZUIN 2000/11/21				
				MATERIAL NO.				
				DATE				
				GZUIN 2000/11/21				
				MATERIAL NO.				
				DATE				
				GZUIN 2000/11/21				
				MATERIAL NO.				
				DATE				
				GZUIN 2000/11/21				
				MATERIAL NO.				
				DATE				
				GZUIN 2000/11/21				
				MATERIAL NO.				
				DATE				
				GZUIN 2000/11/21				
				MATERIAL NO.				
				DATE				
				GZUIN 2000/11/21				
				MATERIAL NO.				
				DATE				
				GZUIN 2000/11/21				
				MATERIAL NO.				
				DATE				
				GZUIN 2000/11/21				
				MATERIAL NO.				
				DATE				
				GZUIN 2000/11/21				
				MATERIAL NO.				
				DATE				
				GZUIN 2000/11/21				
				MATERIAL NO.				
				DATE				
				GZUIN 2000/11/21				
				MATERIAL NO.				
				DATE				
				GZUIN 2000/11/21				
				MATERIAL NO.				
				DATE				
				GZUIN 2000/11/21				
				MATERIAL NO.				
				DATE				
				GZUIN 2000/11/21				
				MATERIAL NO.				
				DATE				
				GZUIN 2000/11/21				
				MATERIAL NO.				
				DATE				
				GZUIN 2000/11/21				
				MATERIAL NO.				
				DATE				
				GZUIN 2000/11/21				
				MATERIAL NO.				
				DATE				
				GZUIN 2000/11/21				
				MATERIAL NO.				
				DATE				
				GZUIN 2000/11/21				
				MATERIAL NO.				
				DATE				
				GZUIN 2000/11/21				
				MATERIAL NO.				
				DATE				
				GZUIN 2000/11/21				
				MATERIAL NO.				
				DATE				
				GZUIN 2000/11/21				
				MATERIAL NO.				
				DATE				
				GZUIN 2000/11/21				
				MATERIAL NO.				
				DATE				
				GZUIN 2000/11/21				
				MATERIAL NO.				
				DATE				
				GZUIN 2000/11/21				
				MATERIAL NO.				
				DATE				
				GZUIN 2000/11/21				
				MATERIAL NO.				
				DATE				
				GZUIN 2000/11/21				
				MATERIAL NO.				
				DATE				
				GZUIN 2000/11/21				
				MATERIAL NO.				
				DATE				
				GZUIN 2000/11/21				
				MATERIAL NO.				
				DATE				
				GZUIN 2000/11/21				
				MATERIAL NO.				
				DATE				
				GZUIN 2000/11/21				
				MATERIAL NO.				
				DATE				
				GZUIN 2000/11/21				
				MATERIAL NO.				
				DATE				
				GZUIN 2000/11/21				
				MATERIAL NO.				
				DATE				
				GZUIN 2000/11/21				
				MATERIAL NO.				
				DATE				
				GZUIN 2000/11/21				
				MATERIAL NO.				
				DATE				
				GZUIN 2000/11/21				
				MATERIAL NO.				
				DATE				
				GZUIN 2000/11/21				
				MATERIAL NO.				
				DATE				
				GZUIN 2000/11/21				
				MATERIAL NO.				
				DATE				
				GZUIN 2000/11/21				
				MATERIAL NO.				
				DATE				
				GZUIN 2000/11/21				
				MATERIAL NO.				
				DATE				
				GZUIN 2000/11/21				
				MATERIAL NO.				
				DATE				
				GZUIN 2000/11/21				
				MATERIAL NO.				
				DATE				
				GZUIN 2000/11/21				
				MATERIAL NO.				
				DATE				
				GZUIN 2000/11/21				
				MATERIAL NO.				
				DATE				
				GZUIN 2000/11/21				
				MATERIAL NO.				
				DATE				
				GZUIN 2000/11/21				
				MATERIAL NO.				
				DATE				
				GZUIN 2000/11/21				
				MATERIAL NO.				
				DATE				
				GZUIN 2000/11/21				
				MATERIAL NO.				
				DATE				
				GZUIN 2000/11/21				
				MATERIAL NO.				
				DATE				
				GZUIN 2000/11/21				
				MATERIAL NO.				
				DATE				
				GZUIN 2000/11/21				
				MATERIAL NO.				
				DATE				
				GZUIN 2000/11/21				
				MATERIAL NO.				
				DATE				
				GZUIN 2000/11/21				
				MATERIAL NO.				
				DATE				
				GZUIN 2000/11/21				
				MATERIAL NO.				
				DATE				
				GZUIN 2000/11/21				
				MATERIAL NO.				
				DATE				
				GZUIN 2000/11/21				
				MATERIAL NO.				
				DATE				
				GZUIN 2000/11/21				
				MATERIAL NO.				
				DATE				
				GZUIN 2000/11/21				
				MATERIAL NO.				
				DATE				
				GZUIN 2000/11/21				
				MATERIAL NO.				
				DATE				
				GZUIN 2000/11/21				
				MATERIAL NO.				
				DATE				
				GZUIN 2000/11/21				
				MATERIAL NO.				
				DATE				
				GZUIN 2000/11/21				
				MATERIAL NO.				
				DATE				
				GZUIN 2000/11/21				
				MATERIAL NO.				
				DATE				
				GZUIN 2000/11/21				
				MATERIAL NO.				
				DATE				