



Chipsmall Limited consists of a professional team with an average of over 10 year of expertise in the distribution of electronic components. Based in Hongkong, we have already established firm and mutual-benefit business relationships with customers from,Europe,America and south Asia,supplying obsolete and hard-to-find components to meet their specific needs.

With the principle of “Quality Parts,Customers Priority,Honest Operation,and Considerate Service”,our business mainly focus on the distribution of electronic components. Line cards we deal with include Microchip,ALPS,ROHM,Xilinx,Pulse,ON,Everlight and Freescale. Main products comprise IC,Modules,Potentiometer,IC Socket,Relay,Connector.Our parts cover such applications as commercial,industrial, and automotives areas.

We are looking forward to setting up business relationship with you and hope to provide you with the best service and solution. Let us make a better world for our industry!



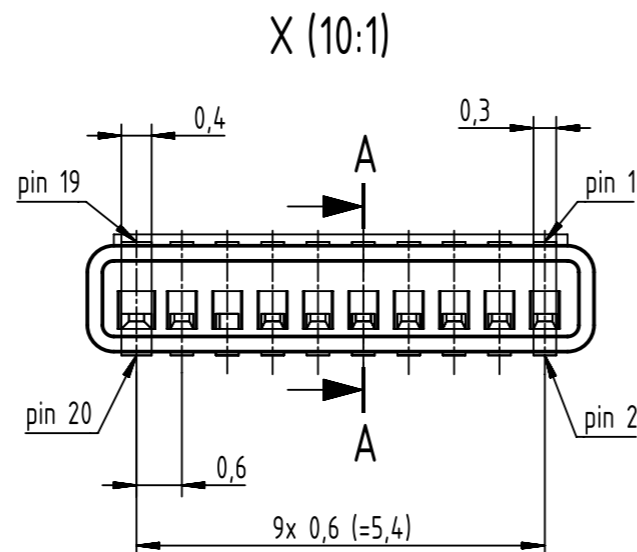
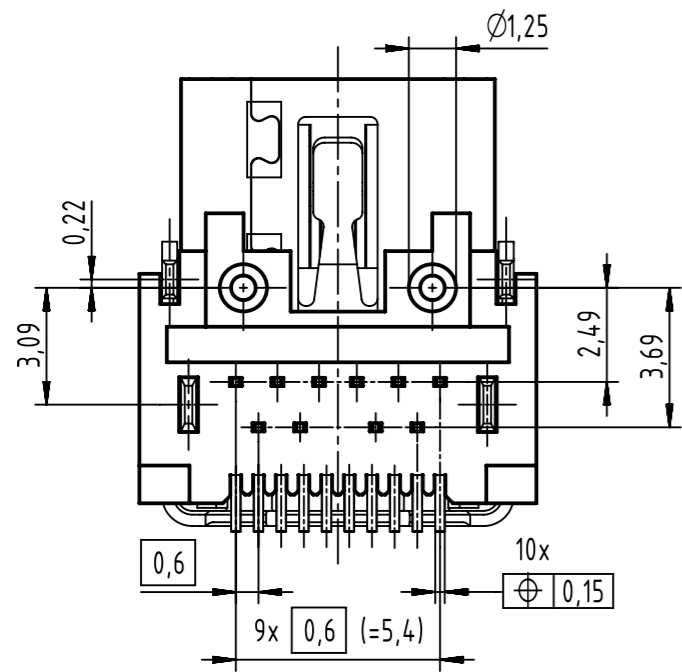
## Contact us

Tel: +86-755-8981 8866 Fax: +86-755-8427 6832

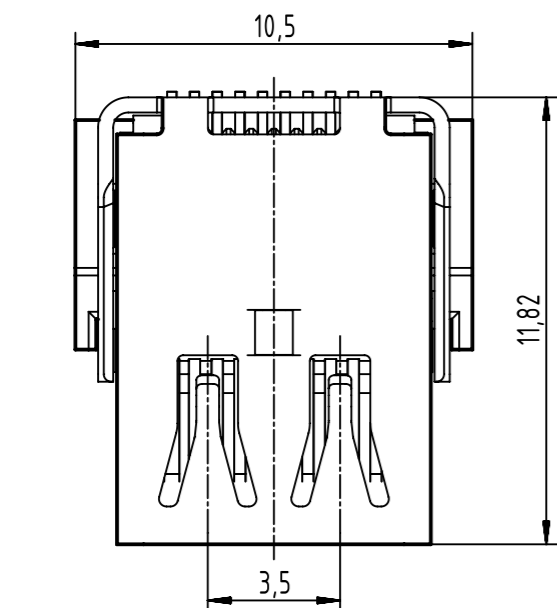
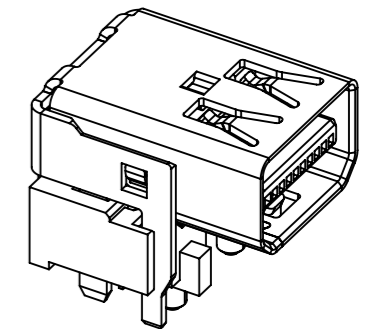
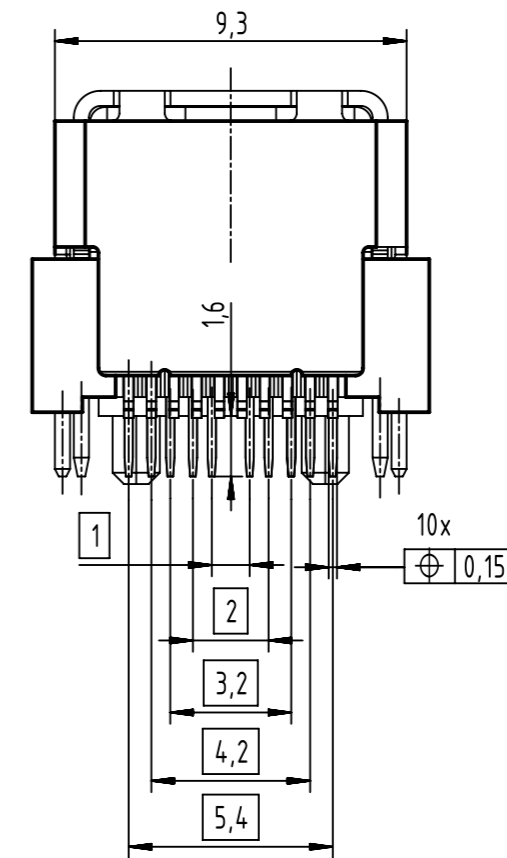
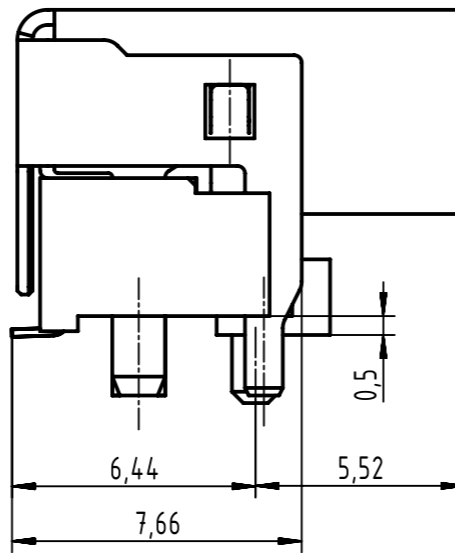
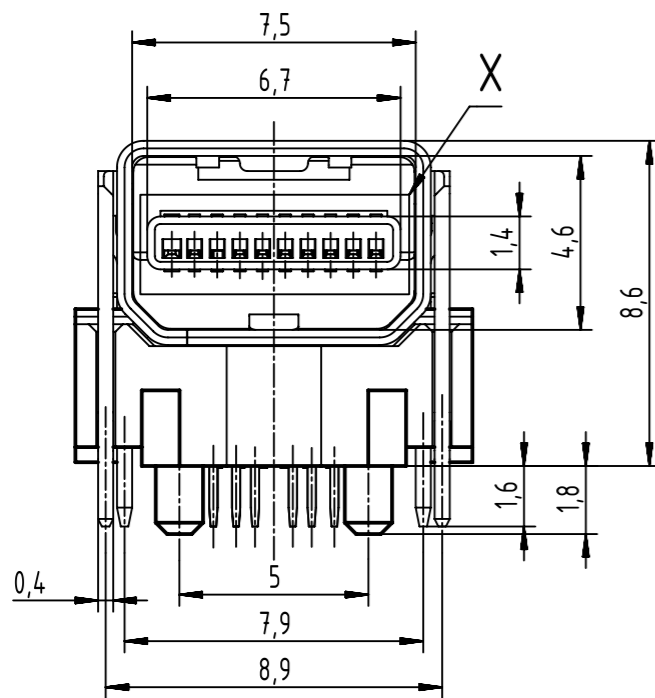
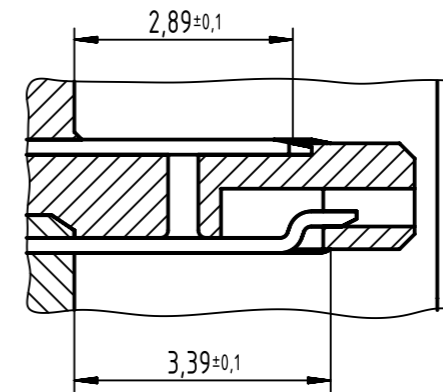
Email & Skype: info@chipsmall.com Web: www.chipsmall.com

Address: A1208, Overseas Decoration Building, #122 Zhenhua RD., Futian, Shenzhen, China

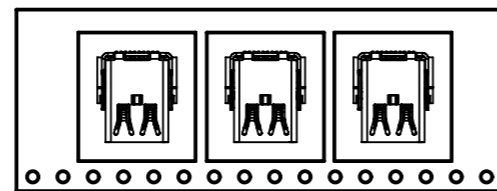




A-A (10:1)



packaging direction for solder jacks in tape & reel

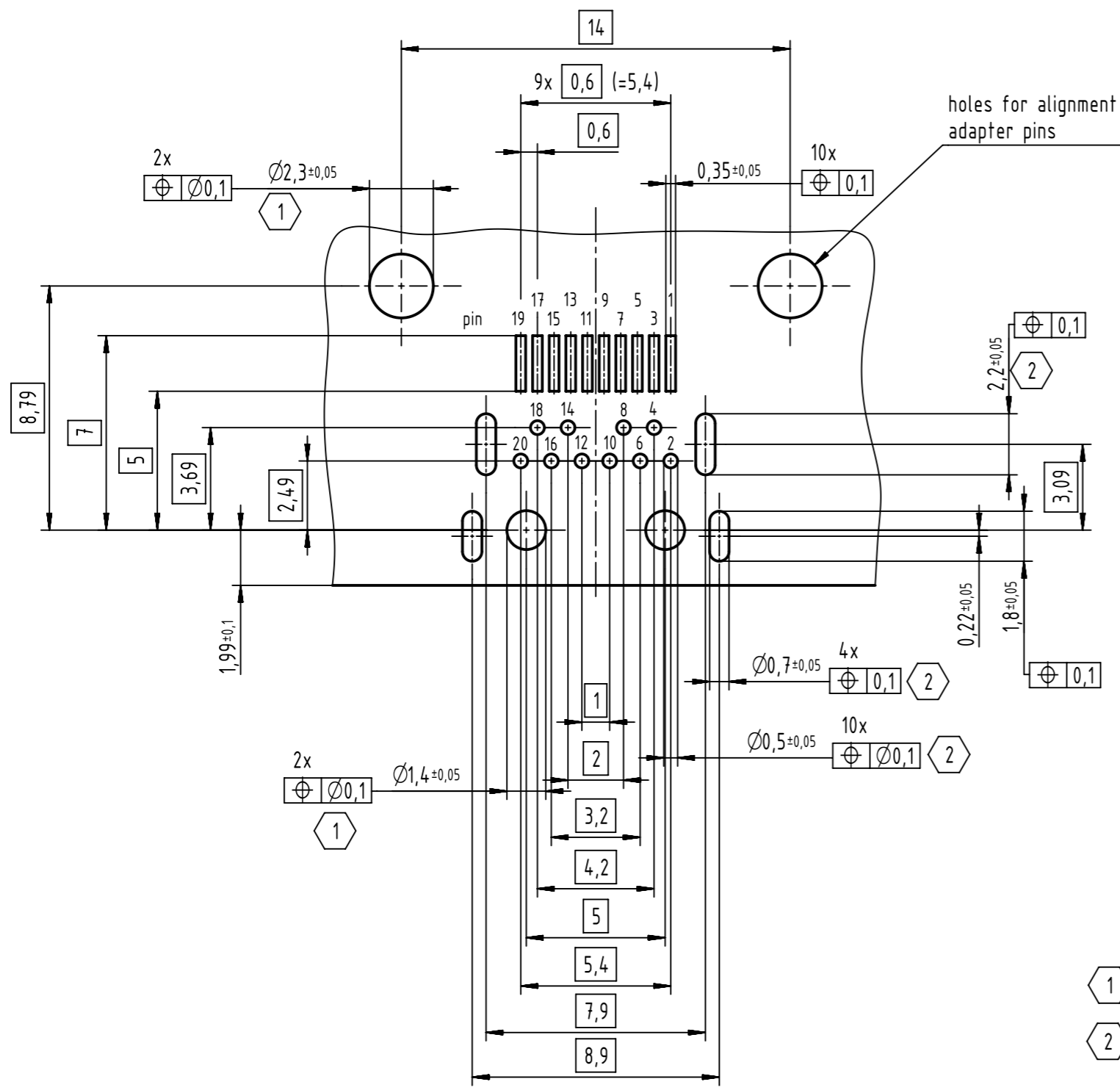


direction of movement

further information see: DS 0945000001

	All rights reserved Department EC PD - DE	All Dimensions in mm Original Size DIN A3		Scale 5:1	Free size tol.	Ref. Sub.
		Created by HASSE	Inspected by LUECKEMEIERM	Standardisation HOFFMANN	Date 2017-09-22	State Final Release
HARTING Electronics GmbH D-32339 Espelkamp		Title Mini DisplayPort receptacle			Doc-Key / ECM-Nr. 100658727/UGD/000/A 500000125431	
		Type TB	Number 09455511000		Rev. A	Page 1/2

# PCB layout



holes for alignment adapter pins

Pin Number	Pin Name - Source Side	Pin Name - Sink Side
1	GND	GND
2	Hot Plug Detect	Hot Plug Detect
3	ML_Lange0(p)	ML_Lange3(n)
4	CONFIG 1	CONFIG 1
5	ML_Lange0(n)	ML_Lange3(p)
6	CONFIG 2	CONFIG 2
7	GND	GND
8	GND	GND
9	ML_Lange1(p)	ML_Lange2(n)
10	ML_Lange3(p)	ML_Lange0(n)
11	ML_Lange1(n)	ML_Lange2(p)
12	ML_Lange3(n)	ML_Lange0(p)
13	GND	GND
14	GND	GND
15	ML_Lange2(p)	ML_Lange1(n)
16	AUX_CH(p)	AUX_CH(p)
17	ML_Lange2(n)	ML_Lange1(p)
18	AUX_CH(n)	AUX_CH(n)
19	GND	GND
20	DP_PWR(PWR OUT)	DP_PWR(PWR OUT)

- 1 non metallized
- 2 dimension after metallization process

	All rights reserved Department EC PD - DE	All Dimensions in mm Original Size DIN A3		Scale 5:1	Free size tol.	Ref. Sub.
		HARTING Electronics GmbH D-32339 Espelkamp	Created by HASSE	Inspected by LUECKEMEIERM	Standardisation HOFFMANN	Date 2017-09-22
Title Mini DisplayPort receptacle						Doc-Key / ECM-Nr. 100658727/UGD/000/A 500000125431
Type TB				Number 09455511000		Rev. A
						Page 2/2