



Chipsmall Limited consists of a professional team with an average of over 10 year of expertise in the distribution of electronic components. Based in Hongkong, we have already established firm and mutual-benefit business relationships with customers from,Europe,America and south Asia,supplying obsolete and hard-to-find components to meet their specific needs.

With the principle of “Quality Parts,Customers Priority,Honest Operation,and Considerate Service”,our business mainly focus on the distribution of electronic components. Line cards we deal with include Microchip,ALPS,ROHM,Xilinx,Pulse,ON,Everlight and Freescale. Main products comprise IC,Modules,Potentiometer,IC Socket,Relay,Connector.Our parts cover such applications as commercial,industrial, and automotives areas.

We are looking forward to setting up business relationship with you and hope to provide you with the best service and solution. Let us make a better world for our industry!



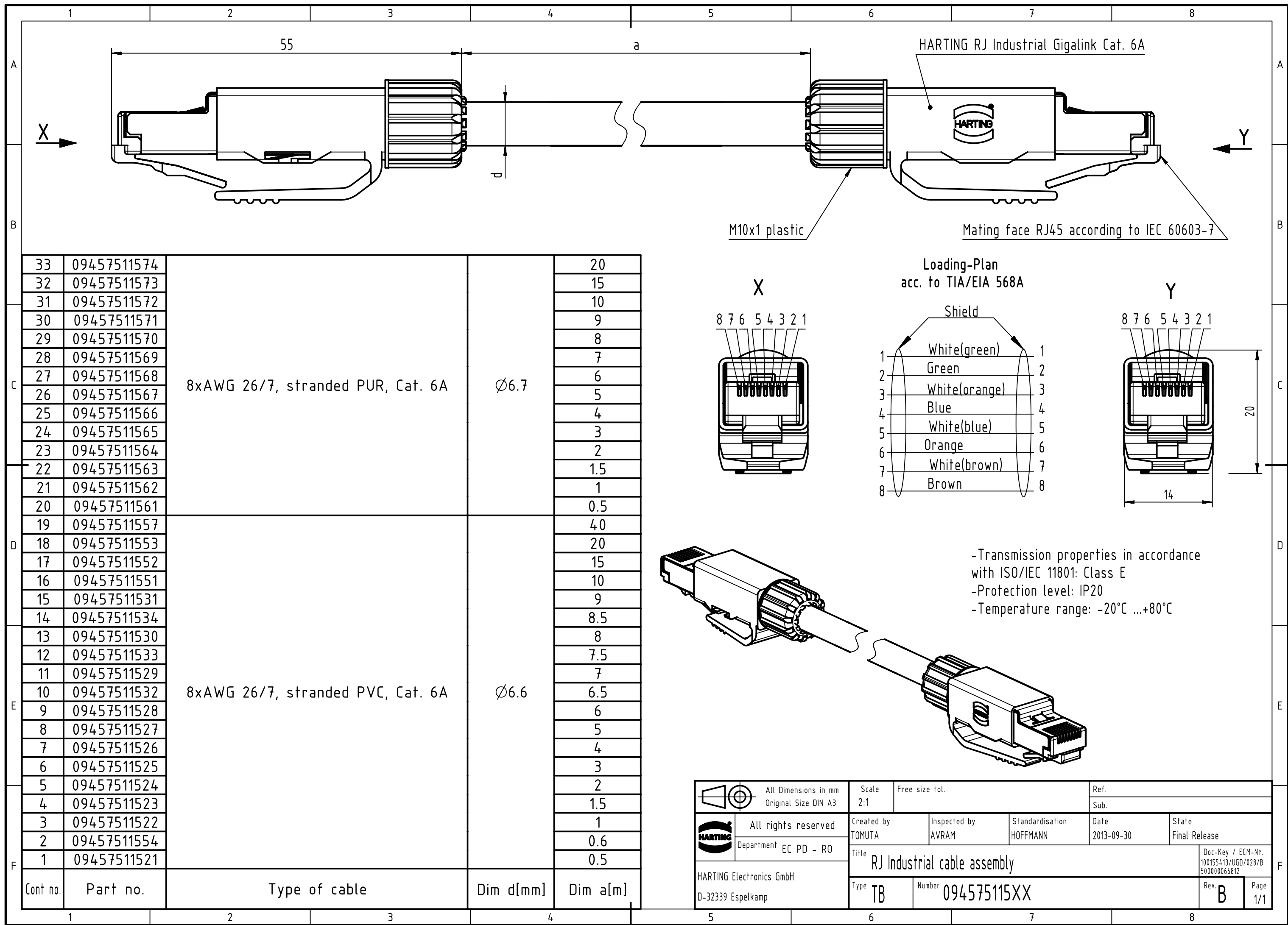
Contact us


Tel: +86-755-8981 8866 Fax: +86-755-8427 6832

Email & Skype: info@chipsmall.com Web: www.chipsmall.com

Address: A1208, Overseas Decoration Building, #122 Zhenhua RD., Futian, Shenzhen, China





 All rights reserved		Scale 2:1		Free size tol.		Ref.	
Department EC PD - RO		Created by TOMUTA		Inspected by AVRAM		Standardisation HOFFMANN	
HARTING Electronics GmbH		Title RJ Industrial cable assembly		Date 2013-09-30		State Final Release	
D-32339 Espelkamp		Type TB		Number 094575115XX		Doc-Key / ECM-Nr. 100155413/UGD/028/B 500000066812	
						Rev. B	
						Page 1/1	