



Chipsmall Limited consists of a professional team with an average of over 10 year of expertise in the distribution of electronic components. Based in Hongkong, we have already established firm and mutual-benefit business relationships with customers from,Europe,America and south Asia,supplying obsolete and hard-to-find components to meet their specific needs.

With the principle of “Quality Parts,Customers Priority,Honest Operation,and Considerate Service”,our business mainly focus on the distribution of electronic components. Line cards we deal with include Microchip,ALPS,ROHM,Xilinx,Pulse,ON,Everlight and Freescale. Main products comprise IC,Modules,Potentiometer,IC Socket,Relay,Connector.Our parts cover such applications as commercial,industrial, and automotives areas.

We are looking forward to setting up business relationship with you and hope to provide you with the best service and solution. Let us make a better world for our industry!



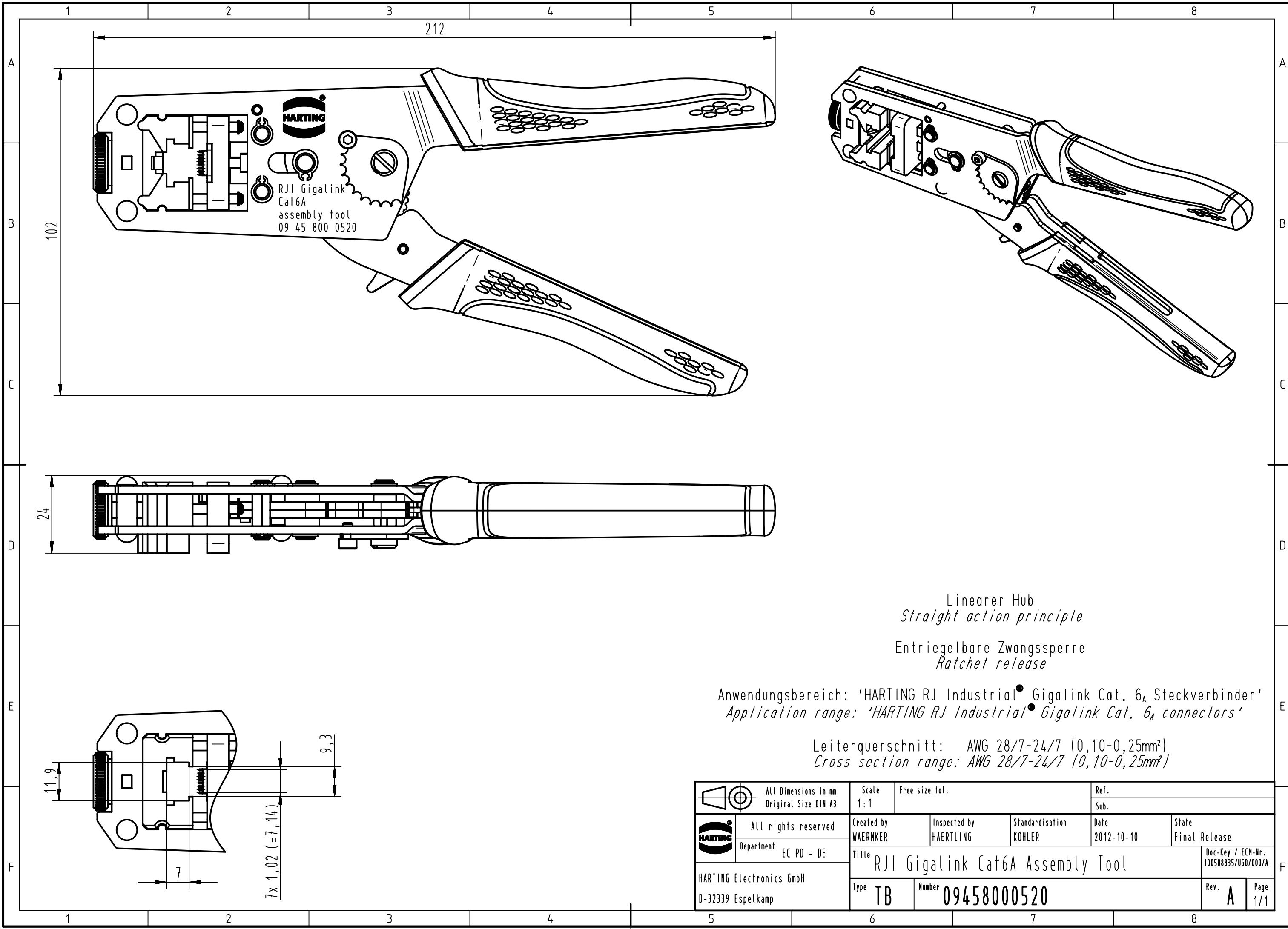
Contact us

Tel: +86-755-8981 8866 Fax: +86-755-8427 6832

Email & Skype: info@chipsmall.com Web: www.chipsmall.com

Address: A1208, Overseas Decoration Building, #122 Zhenhua RD., Futian, Shenzhen, China





Linearer Hub
Straight action principle

Entriegelbare Zwangssperre
Ratchet release

Anwendungsbereich: 'HARTING RJ Industrial' Gigalink Cat. 6_A Steckverbinder'
Application range: 'HARTING RJ Industrial' Gigalink Cat. 6_A connectors'

Leiterquerschnitt: AWG 28/7-24/7 (0,10-0,25mm²)
Cross section range: AWG 28/7-24/7 (0,10-0,25mm²)

		All Dimensions in mm Original Size DIN A3		Scale 1:1	Free size tol.	Ref.			
						Sub.			
		All rights reserved		Created by WAERNKER	Inspected by HAERTLING	Standardisation KÖHLER	Date 2012-10-10	State Final Release	
		Department EC PD - DE		Title RJ1 Gigalink Cat6A Assembly Tool					Doc-Key / ECH-Nr. 100508835/UGD/000/A
HARTING Electronics GmbH D-32339 Espelkamp				Type TB	Number 09458000520			Rev. A	Page 1/1