



Chipsmall Limited consists of a professional team with an average of over 10 year of expertise in the distribution of electronic components. Based in Hongkong, we have already established firm and mutual-benefit business relationships with customers from,Europe,America and south Asia,supplying obsolete and hard-to-find components to meet their specific needs.

With the principle of "Quality Parts,Customers Priority,Honest Operation,and Considerate Service",our business mainly focus on the distribution of electronic components. Line cards we deal with include Microchip,ALPS,ROHM,Xilinx,Pulse,ON,Everlight and Freescale. Main products comprise IC,Modules,Potentiometer,IC Socket,Relay,Connector.Our parts cover such applications as commercial,industrial, and automotives areas.

We are looking forward to setting up business relationship with you and hope to provide you with the best service and solution. Let us make a better world for our industry!



## Contact us

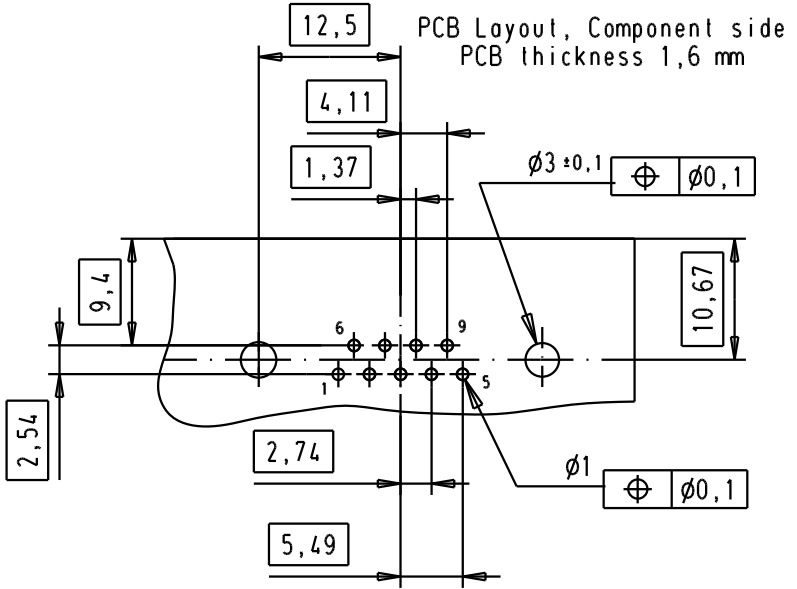
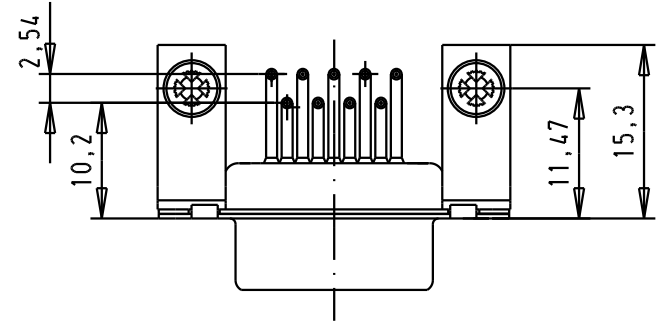
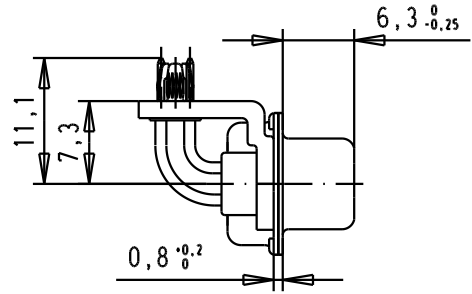
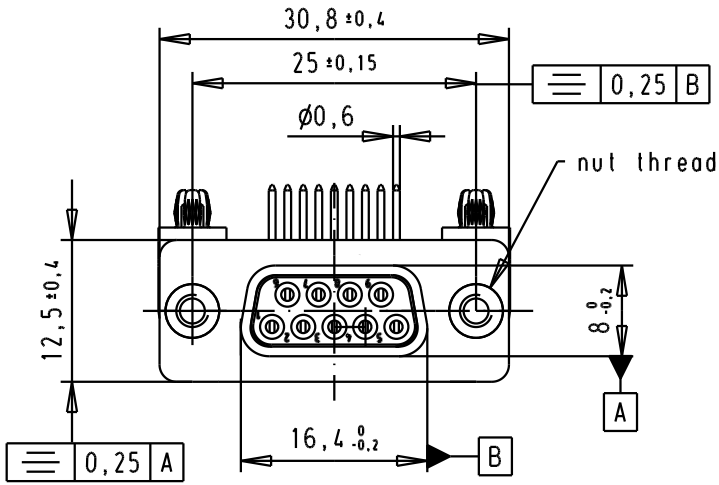
Tel: +86-755-8981 8866 Fax: +86-755-8427 6832

Email & Skype: info@chipsmall.com Web: www.chipsmall.com

Address: A1208, Overseas Decoration Building, #122 Zhenhua RD., Futian, Shenzhen, China



5 4 3 2 1



SPECIFICATION

Mating Cycles	500
Filter type	C
Capacitance	470pf±20%
Working Voltage	100v
Insulation Resistance	>1GΩ

Minimum Insertion Loss

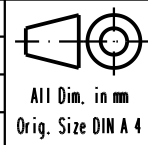
FREQUENCY (MHz)	ATTENUATION dB
5	-
10	1dB
50	10dB
100	15dB
500	35dB
1000	32dB

D  
C  
B  
A

09 64 114 7223	M3
09 64 114 7222	UNC 4-40
Part number	Nut thread

				Dat.	Name
				Detail.	8-JUL-02 CV
				Insp.	
				Stand.	
31897	17/05/04	AF	HARTING EURL F-95972 Paris		
31058	8-JUL-02	CV			
Mod.	Dat.	Name			

D-Sub, female, angled, 9 Poles, turned solder pin tin plated shell, metal bracket, nut and board lock



TB 0964114722x  
Sub.

Ma?Ms Lab/  
Scale  
1.5:1  
Blatt/ Page  
1 / 4