



Chipsmall Limited consists of a professional team with an average of over 10 year of expertise in the distribution of electronic components. Based in Hongkong, we have already established firm and mutual-benefit business relationships with customers from,Europe,America and south Asia,supplying obsolete and hard-to-find components to meet their specific needs.

With the principle of “Quality Parts,Customers Priority,Honest Operation,and Considerate Service”,our business mainly focus on the distribution of electronic components. Line cards we deal with include Microchip,ALPS,ROHM,Xilinx,Pulse,ON,Everlight and Freescale. Main products comprise IC,Modules,Potentiometer,IC Socket,Relay,Connector.Our parts cover such applications as commercial,industrial, and automotives areas.

We are looking forward to setting up business relationship with you and hope to provide you with the best service and solution. Let us make a better world for our industry!



## Contact us

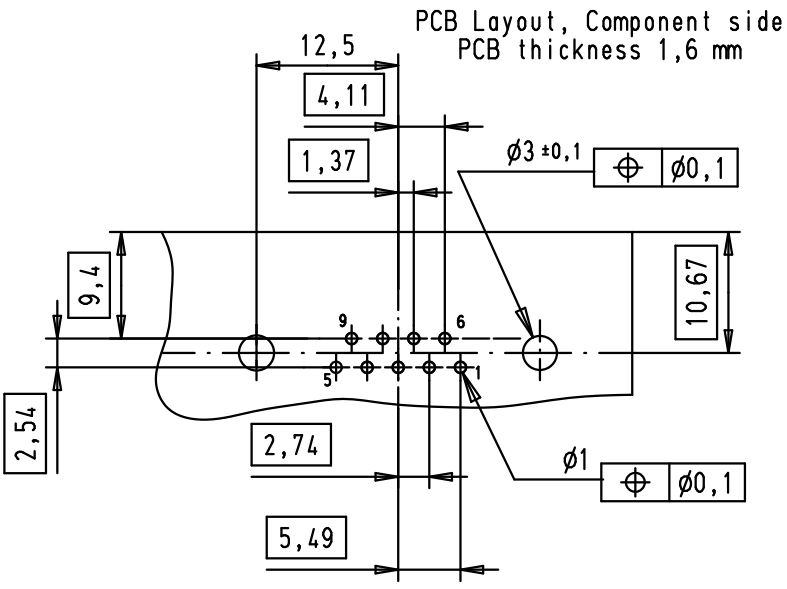
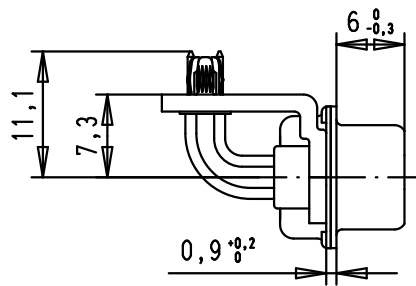
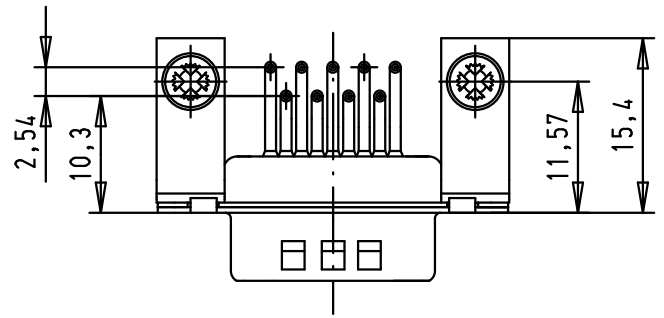
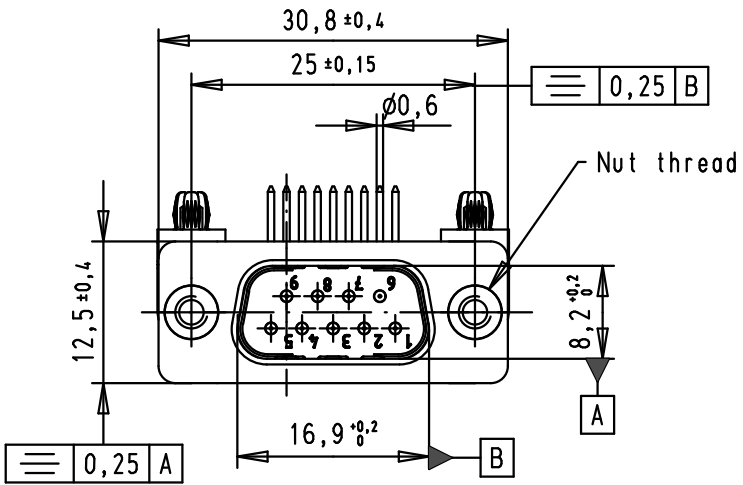
Tel: +86-755-8981 8866 Fax: +86-755-8427 6832

Email & Skype: info@chipsmall.com Web: www.chipsmall.com

Address: A1208, Overseas Decoration Building, #122 Zhenhua RD., Futian, Shenzhen, China



D  
C  
B  
A



SPECIFICATION

Performance level	PL2
Filter type	C
Capacitance	47pf±20%
Working Voltage	100v
Current rating	7,5A
Insulation Resistance	>1GΩ

Minimum Insertion Loss

FREQUENCY (MHz)	ATTENUATION dB
5	--
10	--
50	--
100	--
500	30dB
1000	35dB

09641247213	M3
09641247212	4-4UNC-2B
Part number	Nut thread

Mod.	Dot.	Name	Detail.	Dot.	Name
			Insp.	8-JUL-02	CV
			Stand.	12/01/12	JB
36283	12/01/12	SD			
32522	07/02/05	AF			
31576	08/12/03	AF			
31058	8-JUL-02	CV			

D-Sub, male, angled, 9 Poles, with turned solder pin, metal bracket with nut and board lock

Mo?Mstab/Scale  
1.5:1

HARTING EURL  
F-95972 Paris



TB 0964124721x

Blatt/ Page  
1 / 4

Sub.