



Chipsmall Limited consists of a professional team with an average of over 10 year of expertise in the distribution of electronic components. Based in Hongkong, we have already established firm and mutual-benefit business relationships with customers from,Europe,America and south Asia,supplying obsolete and hard-to-find components to meet their specific needs.

With the principle of "Quality Parts,Customers Priority,Honest Operation,and Considerate Service",our business mainly focus on the distribution of electronic components. Line cards we deal with include Microchip,ALPS,ROHM,Xilinx,Pulse,ON,Everlight and Freescale. Main products comprise IC,Modules,Potentiometer,IC Socket,Relay,Connector.Our parts cover such applications as commercial,industrial, and automotives areas.

We are looking forward to setting up business relationship with you and hope to provide you with the best service and solution. Let us make a better world for our industry!



Contact us

Tel: +86-755-8981 8866 Fax: +86-755-8427 6832

Email & Skype: info@chipsmall.com Web: www.chipsmall.com

Address: A1208, Overseas Decoration Building, #122 Zhenhua RD., Futian, Shenzhen, China



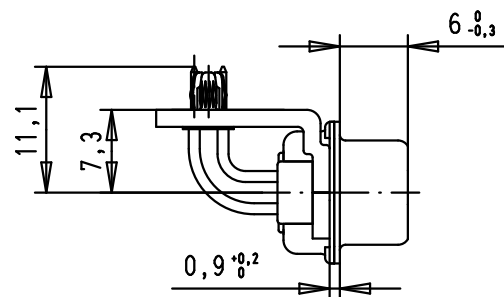
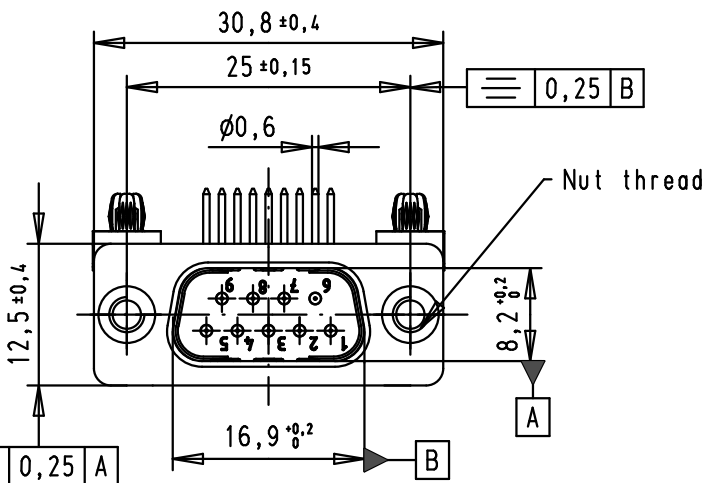
5

4

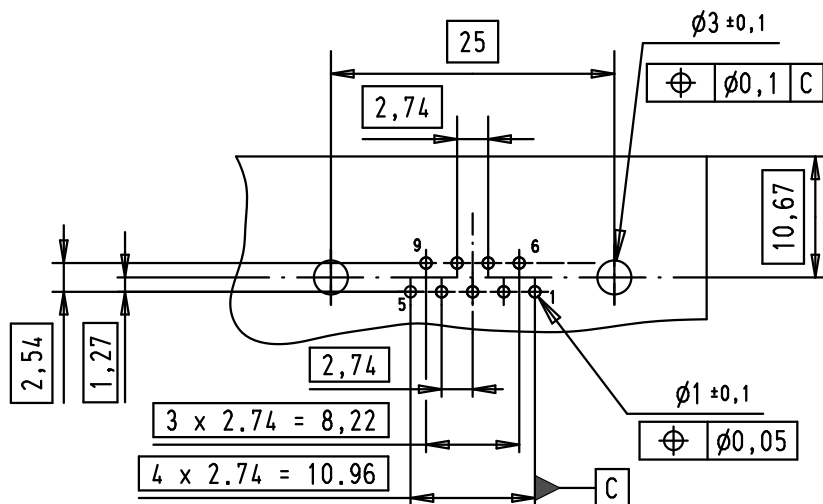
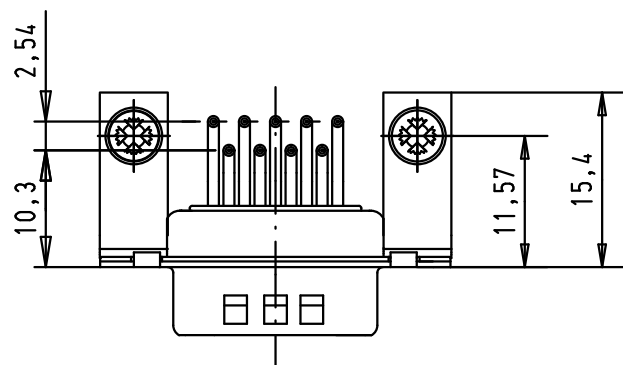
3

2

1



PCB Layout, Component side,
thickness 1.6 mm



SPECIFICATION

Performance level	PL2
Filter type	C
Capacitance	1000pf±20%
Working Voltage	100v
Current Rating	7.5A
Insulation Resistance	>1GΩ

FREQUENCY (MHz)	ATTENUATION (dB)
5	1dB
10	3dB
50	12dB
100	20dB
500	34dB
1000	30dB

A

09641247233	M3		36283	12/01/12	SD					
09641247232	UNC 4-40		33240	13/10/05	JMDR					
Part number	Nut thread		31058	8-JUL-02	CV					
			Mod.	Dot.	Name					

	Dot.	Name
Detail.	13/10/05	JMDR
Insp.	12/01/12	JB
Stand.		



All Dim. in mm
Orig. Size DIN A 4

D-Sub, male, angled, 9 Poles,
solder pins, brackets,
clinch nuts and board-locks

Mo?Mstab/
Scale

1.5:1

HARTING EURL
F-95972 Paris



TB 0964124723x

Sub.

Blatt/ Page

1 / 4