



Chipsmall Limited consists of a professional team with an average of over 10 year of expertise in the distribution of electronic components. Based in Hongkong, we have already established firm and mutual-benefit business relationships with customers from,Europe,America and south Asia,supplying obsolete and hard-to-find components to meet their specific needs.

With the principle of “Quality Parts,Customers Priority,Honest Operation,and Considerate Service”,our business mainly focus on the distribution of electronic components. Line cards we deal with include Microchip,ALPS,ROHM,Xilinx,Pulse,ON,Everlight and Freescale. Main products comprise IC,Modules,Potentiometer,IC Socket,Relay,Connector.Our parts cover such applications as commercial,industrial, and automotives areas.

We are looking forward to setting up business relationship with you and hope to provide you with the best service and solution. Let us make a better world for our industry!



Contact us

Tel: +86-755-8981 8866 Fax: +86-755-8427 6832

Email & Skype: info@chipsmall.com Web: www.chipsmall.com

Address: A1208, Overseas Decoration Building, #122 Zhenhua RD., Futian, Shenzhen, China



5

4

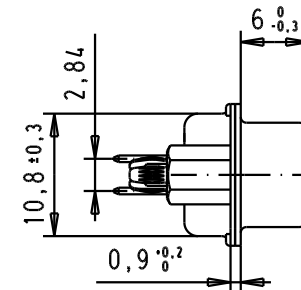
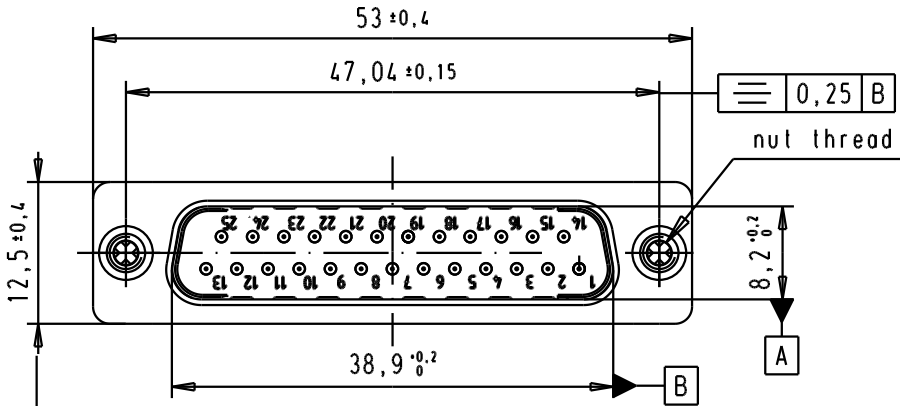
3

2

1

SPECIFICATION

Filter type	C
Mating Cycles	500
Capacitance	1000pf±20%
Working Voltage	100v
Current Rating	7.5A
Insulation Resistance	>1GΩ



0,25 A

0,25 B

nut thread

A

B

Side view of the filter component. Dimensions include a length of 41.3 ± 0.3 mm and a diameter of $\phi 0.6$ mm for the pins. The component is mounted on a base with a height of 5 mm. The filter body has a height of 11.2 mm and a base diameter of 11.2 mm. The distance between the two mounting holes is 9.8 mm, and the distance from the edge to the mounting hole is 6.5 mm.

PCB layout diagram showing dimensions and pin locations. Dimensions include a total length of 23.52 mm, a distance of 15.19 mm to the center of the pins, and a distance of 12.42 mm to the right edge. Pin locations are marked with dimensions: 6.91 , 9.68 , 4.14 , 1.4 , 2.77 , 5.54 , 13.82 , 16.56 , 11.05 , and 8.28 . Pin diameters are $\phi 0.1$ mm. A hole diameter of $\phi 3 \pm 0.1$ mm is shown. The text "PCB Layout, Component side" and "PCB thickness 1,6 mm" is included.

FREQUENCY (MHz)	ATTENUATION (dB)
5	1dB
10	3dB
50	12dB
100	20dB
500	34dB
1000	30dB

PCB Layout, Component side
PCB thickness 1,6 mm

			Dat.	Name		D-Sub, male, straight, 25 Poles, with turned solder pin, spacer nut with board lock	Ma?Ms lab/ Scale 1.5:1
		Detail.	8- JUL -02	CV			
		Insp.					
		Stand.			All Dim. in mm Orig. Size DIN A 4		
09 64 322 7236	M3	31897	17/05/04	AF	HARTING	TB 0964322723x	Blatt/ Page 2/3
09 64 322 7235	UNC 4-40	31058	8- JUL -02	CV			
Part number	nut thread	Mod.	Dat.	Name			
HARTING EURL F-95972 Paris							
					Sub.		

09 64 322 7236	M3
09 64 322 7235	UNC 4-40
Part number	nut thread

31897	17/05/04	AF
31058	8- JUL -02	CV
Mod.	Dat.	Name

HARTING EURL
F-95972 Paris

Sub.

TB 0964322723x

Blatt/ Page
2/3

D

C

B

A