



Chipsmall Limited consists of a professional team with an average of over 10 year of expertise in the distribution of electronic components. Based in Hongkong, we have already established firm and mutual-benefit business relationships with customers from,Europe,America and south Asia,supplying obsolete and hard-to-find components to meet their specific needs.

With the principle of “Quality Parts,Customers Priority,Honest Operation,and Considerate Service”,our business mainly focus on the distribution of electronic components. Line cards we deal with include Microchip,ALPS,ROHM,Xilinx,Pulse,ON,Everlight and Freescale. Main products comprise IC,Modules,Potentiometer,IC Socket,Relay,Connector.Our parts cover such applications as commercial,industrial, and automotives areas.

We are looking forward to setting up business relationship with you and hope to provide you with the best service and solution. Let us make a better world for our industry!



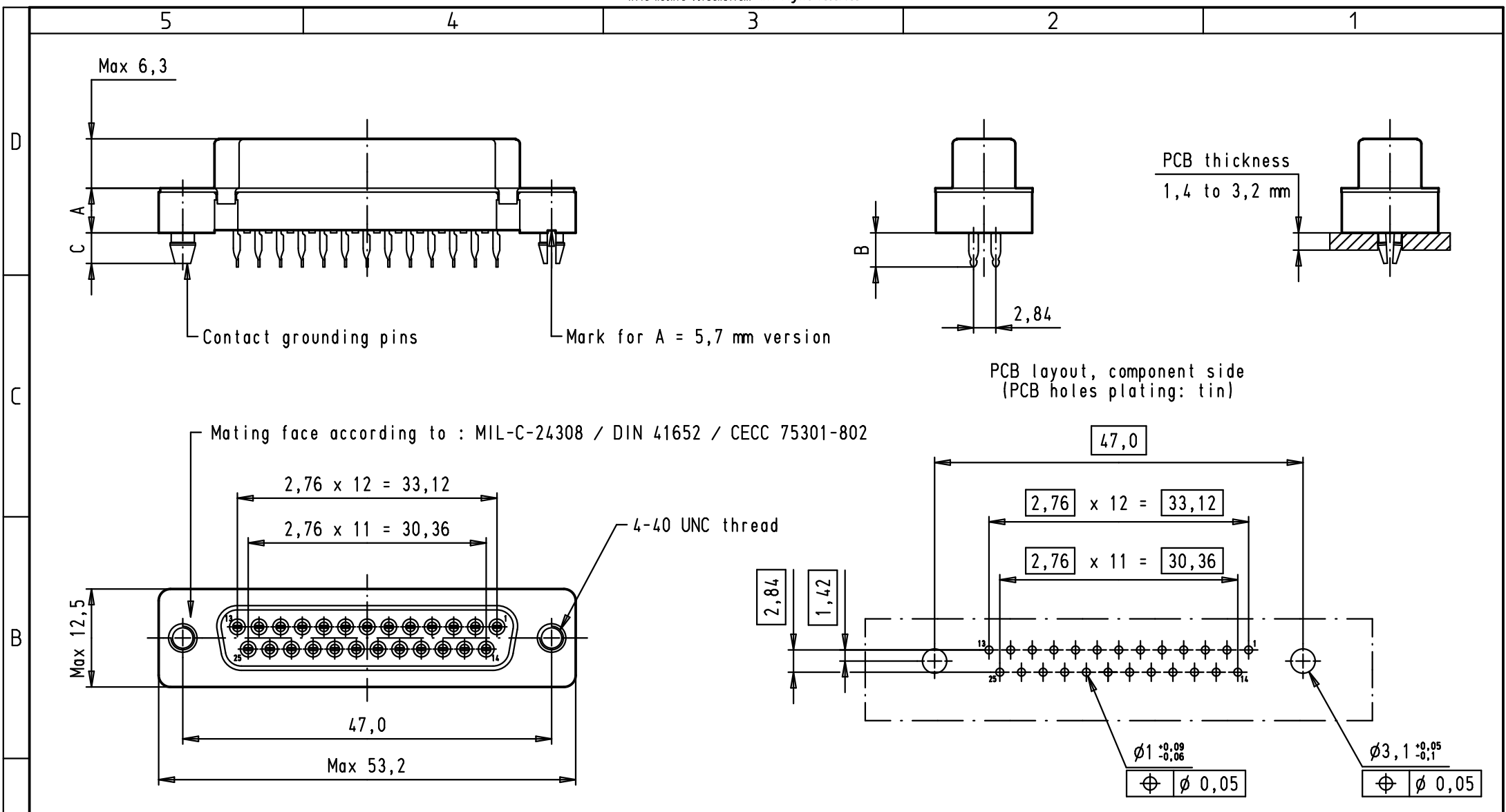
## Contact us

Tel: +86-755-8981 8866 Fax: +86-755-8427 6832

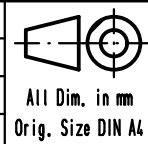
Email & Skype: info@chipsmall.com Web: www.chipsmall.com

Address: A1208, Overseas Decoration Building, #122 Zhenhua RD., Futian, Shenzhen, China





Part number	Performance level	A±0,2	B±0,2	Max C	Mod.	Dot.	Name	Detail.	Insp.	Stand.	Dot.	Name	Sub.	Blatt/ Page
09 66 354 7512	3	6	4,20	3,5										Maßstab/ Scale 1,5:1
09 66 354 6512	2	6	4,20	3,5										
09 66 354 5512	0,76 µm Au	6	4,20	3,5										Blatt/ Page 2 / 3
09 66 354 7516	3	5,7	4,35	3,9	EC01000	27/11/09	PK							
09 66 354 6516	2	5,7	4,35	3,9	27980	05/03/01	JFB	HARTING EURL F-95972 Paris						TB 09 66 354 X51X
09 66 354 5516	0,76 µm Au	5,7	4,35	3,9	26574	14/02/00	JFB							



D-Sub, female, straight, 25 poles, with press-in termination, version contact grounding pins



Sub.