



Chipsmall Limited consists of a professional team with an average of over 10 year of expertise in the distribution of electronic components. Based in Hongkong, we have already established firm and mutual-benefit business relationships with customers from,Europe,America and south Asia,supplying obsolete and hard-to-find components to meet their specific needs.

With the principle of “Quality Parts,Customers Priority,Honest Operation,and Considerate Service”,our business mainly focus on the distribution of electronic components. Line cards we deal with include Microchip,ALPS,ROHM,Xilinx,Pulse,ON,Everlight and Freescale. Main products comprise IC,Modules,Potentiometer,IC Socket,Relay,Connector.Our parts cover such applications as commercial,industrial, and automotives areas.

We are looking forward to setting up business relationship with you and hope to provide you with the best service and solution. Let us make a better world for our industry!



Contact us

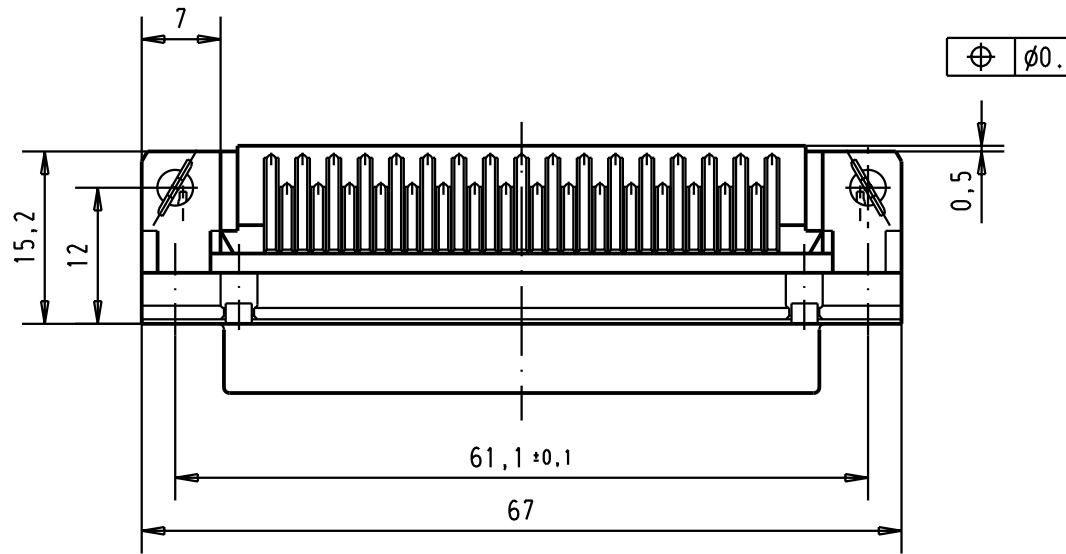
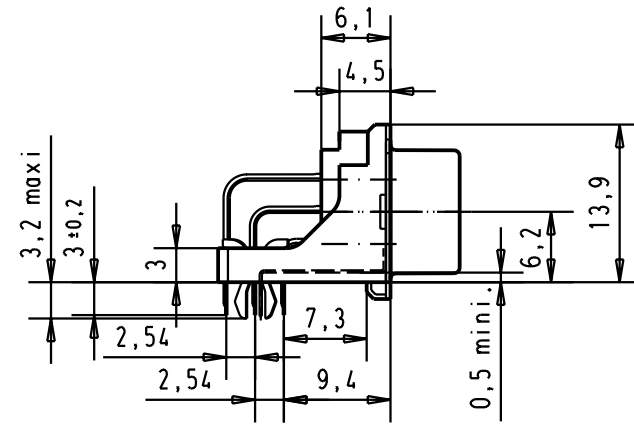
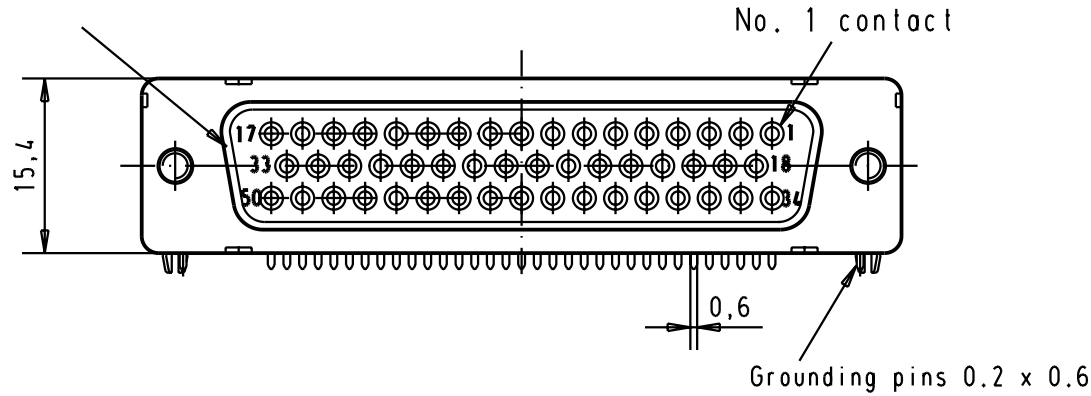
Tel: +86-755-8981 8866 Fax: +86-755-8427 6832

Email & Skype: info@chipsmall.com Web: www.chipsmall.com

Address: A1208, Overseas Decoration Building, #122 Zhenhua RD., Futian, Shenzhen, China

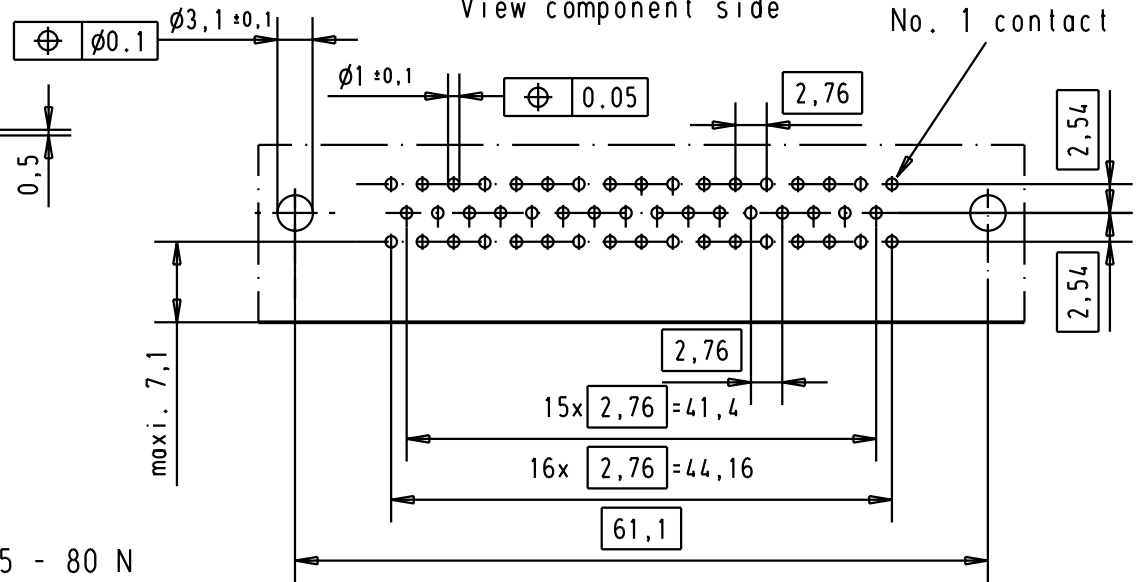


Mating face according to MIL-C-24308 / DIN 41 652 / CECC 75301-802



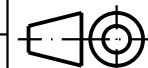
Mounting force on Printed board : 25 - 80 N

Printed board layout (1,6 ± 0,2 thick)
View component side



09 66 552 6615	M3	2			
09 66 552 7615	M3	3			
09 66 552 5615	M3	0,76 µm Au			
09 66 552 6616	4-40 UNC	2			
09 66 552 7616	4-40 UNC	3	31084	04/SEP/02	YT
09 66 552 5616	4-40 UNC	0,76 µm Au	29733	23-NOV-01	JB
Part number	nut thread	Performance level	Mod.	Dat.	Name

	Dat.	Name
Detail.	23-NOV-01	JB
Insp.		
Stand.		
HARTING EURL F-95972 Paris		



All Dim. in mm
Orig. Size DIN A 4



D-Sub female low profile
50 poles with solder pins,
nuts, board lock and
grounding pins

TB 09 66 552 X61x

Sub.

Moßstab/
Scale

1,5:1

Blatt/ Page

2