



Chipsmall Limited consists of a professional team with an average of over 10 year of expertise in the distribution of electronic components. Based in Hongkong, we have already established firm and mutual-benefit business relationships with customers from,Europe,America and south Asia,supplying obsolete and hard-to-find components to meet their specific needs.

With the principle of "Quality Parts,Customers Priority,Honest Operation,and Considerate Service",our business mainly focus on the distribution of electronic components. Line cards we deal with include Microchip,ALPS,ROHM,Xilinx,Pulse,ON,Everlight and Freescale. Main products comprise IC,Modules,Potentiometer,IC Socket,Relay,Connector.Our parts cover such applications as commercial,industrial, and automotives areas.

We are looking forward to setting up business relationship with you and hope to provide you with the best service and solution. Let us make a better world for our industry!



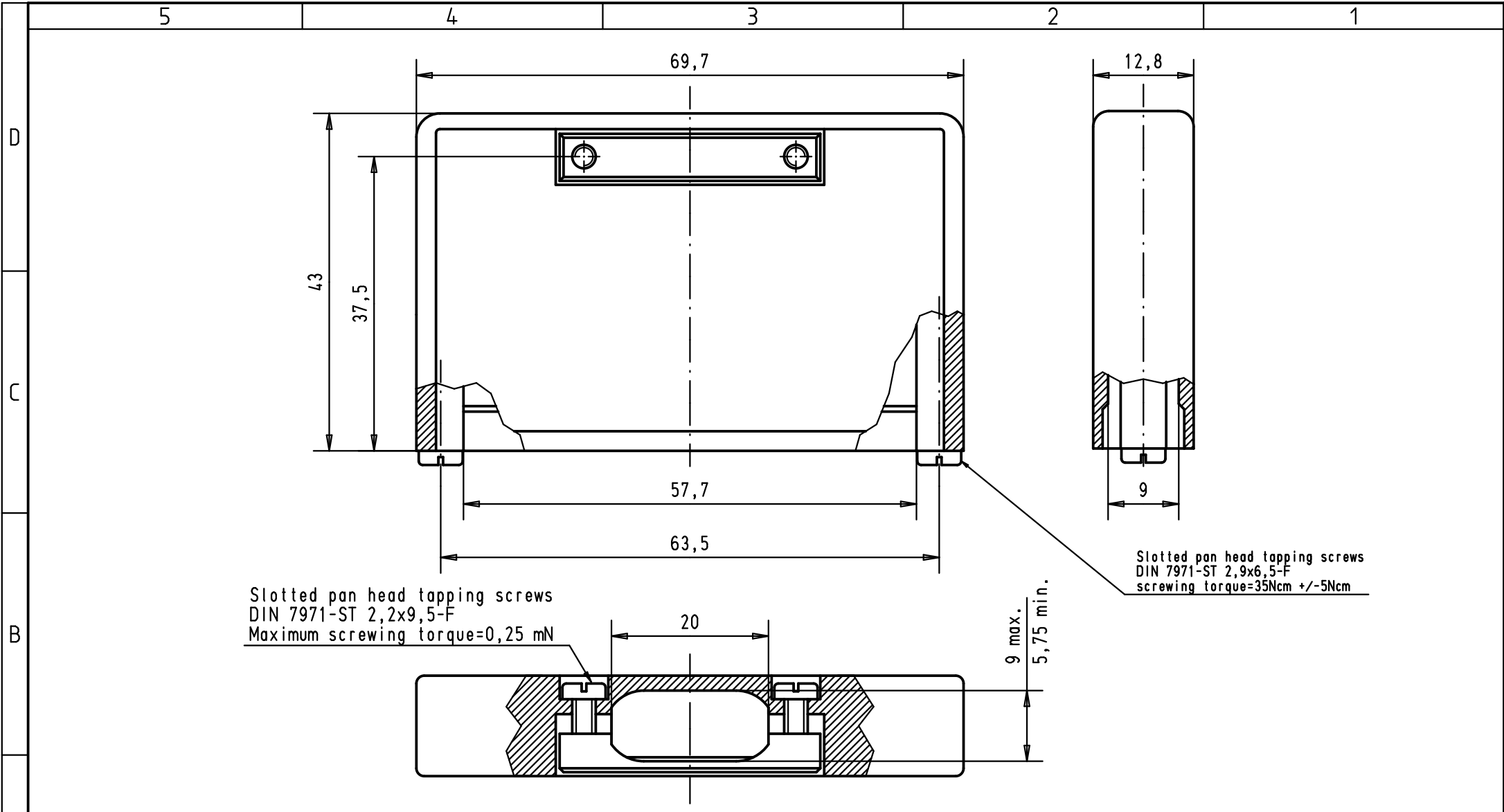
Contact us



Tel: +86-755-8981 8866 Fax: +86-755-8427 6832

Email & Skype: info@chipsmall.com Web: www.chipsmall.com

Address: A1208, Overseas Decoration Building, #122 Zhenhua RD., Futian, Shenzhen, China





					Dat.		Name		 All Dim. in mm Orig. Size DIN A 4		D-Sub, Hood 37 poles, for spring or slide locking, top cable entry		Maßstab/ Scale
					Detail.		CV						1.5:1
					Insp.		JMDV						
					Stand.								
09 67 037 0413	Thermoplastic metallized		EC03223	25-MAY-11	SD	HARTING EURL F-95972 Paris		 TB 0967037041x		Blatt/ Page			
09 67 037 0411	Thermoplastic grey RAL 7032		29760	28-MAR-02	CV					1			
Part number	Material		Mod.	Dat.	Name						Sub.		