



Chipsmall Limited consists of a professional team with an average of over 10 year of expertise in the distribution of electronic components. Based in Hongkong, we have already established firm and mutual-benefit business relationships with customers from,Europe,America and south Asia,supplying obsolete and hard-to-find components to meet their specific needs.

With the principle of “Quality Parts,Customers Priority,Honest Operation,and Considerate Service”,our business mainly focus on the distribution of electronic components. Line cards we deal with include Microchip,ALPS,ROHM,Xilinx,Pulse,ON,Everlight and Freescale. Main products comprise IC,Modules,Potentiometer,IC Socket,Relay,Connector.Our parts cover such applications as commercial,industrial, and automotives areas.

We are looking forward to setting up business relationship with you and hope to provide you with the best service and solution. Let us make a better world for our industry!



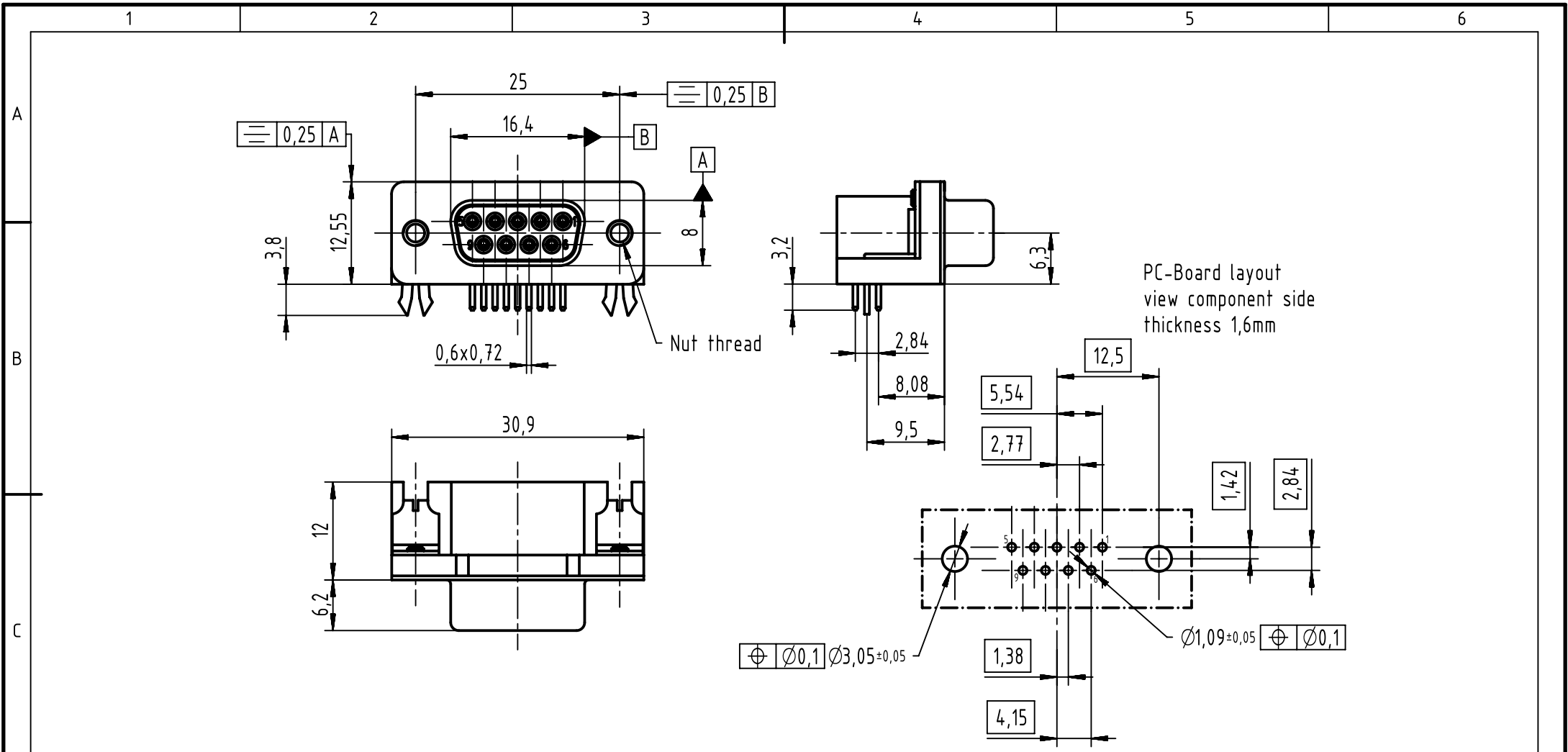
## Contact us

Tel: +86-755-8981 8866 Fax: +86-755-8427 6832

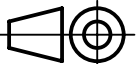

Email & Skype: info@chipsmall.com Web: www.chipsmall.com

Address: A1208, Overseas Decoration Building, #122 Zhenhua RD., Futian, Shenzhen, China





Connector insertion force on PCB = maxi 80N

09681537611	M3	PL3	 All Dimensions in mm Original Size DIN A4	Scale 2:1	Free size tol.		Ref.		
09681535611	M3	S4		 All rights reserved Department EC PD - FR	Created by DOUGE	Inspected by BAGDIKIAN	Standardisation HOFFMANN	Date 2013-12-10	State Final Release
09681537612	4-40 UNC	PL3	HARTING Electronics GmbH D-32339 Espelkamp		Title D-Sub STD 9P FEM angled board locks			Doc-Key / ECM-Nr. 100539510/UGD/001/B 500000069293	
09681535612	4-40 UNC	S4		Type TB	Number 0968153X61X		Rev. B	Page 1/1	
Part number	Nut thread	Performance level							