



Chipsmall Limited consists of a professional team with an average of over 10 year of expertise in the distribution of electronic components. Based in Hongkong, we have already established firm and mutual-benefit business relationships with customers from,Europe,America and south Asia,supplying obsolete and hard-to-find components to meet their specific needs.

With the principle of “Quality Parts,Customers Priority,Honest Operation,and Considerate Service”,our business mainly focus on the distribution of electronic components. Line cards we deal with include Microchip,ALPS,ROHM,Xilinx,Pulse,ON,Everlight and Freescale. Main products comprise IC,Modules,Potentiometer,IC Socket,Relay,Connector.Our parts cover such applications as commercial,industrial, and automotives areas.

We are looking forward to setting up business relationship with you and hope to provide you with the best service and solution. Let us make a better world for our industry!



Contact us

Tel: +86-755-8981 8866 Fax: +86-755-8427 6832

Email & Skype: info@chipsmall.com Web: www.chipsmall.com

Address: A1208, Overseas Decoration Building, #122 Zhenhua RD., Futian, Shenzhen, China

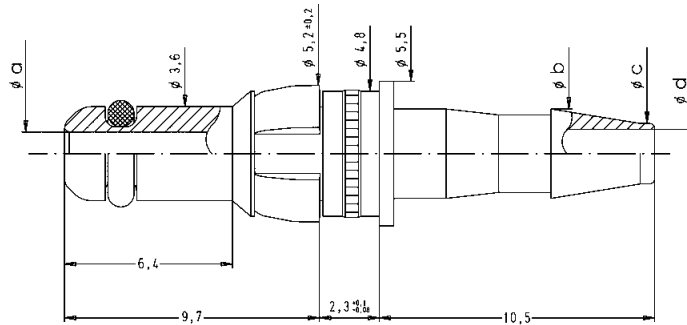




Pneumatic contacts for cable applications

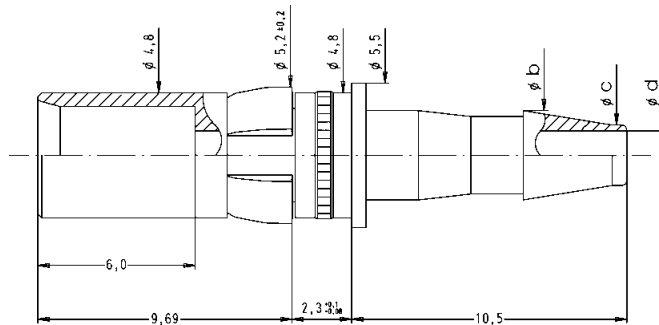
| Identification | Inner diameter air tube (mm) | Part number |
|-----------------|------------------------------|----------------|
| Male contacts | 2 | 09 69 287 0060 |
| | 2.6 | 09 69 287 0061 |
| | 3 | 09 69 287 0062 |
| | 4 | 09 69 287 0063 |
| Female contacts | 2 | 09 69 187 0060 |
| | 2.6 | 09 69 187 0061 |
| | 3 | 09 69 187 0062 |
| | 4 | 09 69 187 0063 |

Male contacts



| Part number | ø a | ø b | ø c | ø d |
|----------------|------|-----|-----|------|
| 09 69 x87 0060 | 1.45 | 2.6 | 1.5 | 0.95 |
| 09 69 x87 0061 | 1.65 | 3.1 | 2.0 | 1.65 |
| 09 69 x87 0062 | 1.65 | 3.4 | 2.3 | 1.85 |
| 09 69 x87 0063 | 1.65 | 4.8 | 3.7 | 2.95 |

Female contacts



Dimensions in mm

D-Sub