



Chipsmall Limited consists of a professional team with an average of over 10 year of expertise in the distribution of electronic components. Based in Hongkong, we have already established firm and mutual-benefit business relationships with customers from,Europe,America and south Asia,supplying obsolete and hard-to-find components to meet their specific needs.

With the principle of “Quality Parts,Customers Priority,Honest Operation,and Considerate Service”,our business mainly focus on the distribution of electronic components. Line cards we deal with include Microchip,ALPS,ROHM,Xilinx,Pulse,ON,Everlight and Freescale. Main products comprise IC,Modules,Potentiometer,IC Socket,Relay,Connector.Our parts cover such applications as commercial,industrial, and automotives areas.

We are looking forward to setting up business relationship with you and hope to provide you with the best service and solution. Let us make a better world for our industry!



Contact us

Tel: +86-755-8981 8866 Fax: +86-755-8427 6832

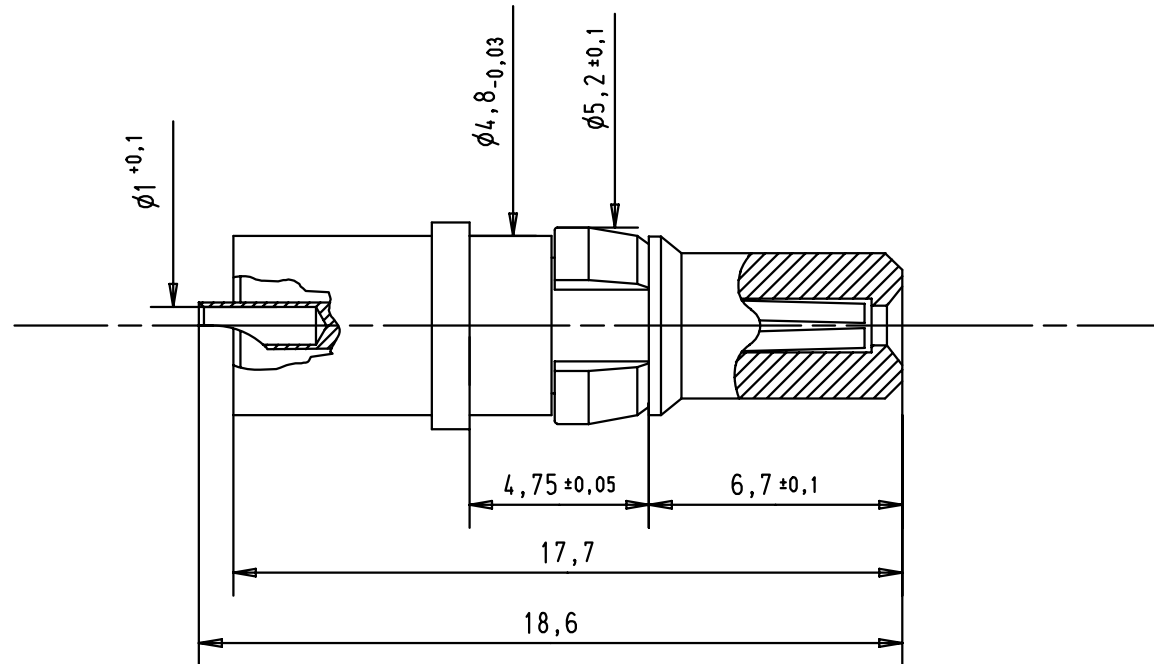
Email & Skype: info@chipsmall.com Web: www.chipsmall.com



Address: A1208, Overseas Decoration Building, #122 Zhenhua RD., Futian, Shenzhen, China



Harnessing dimensions

Technical drawing illustrating harnessing dimensions. The drawing shows a cross-section of a cable with a central core and surrounding strands. A dimension line indicates a width of 1,5. A label $\phi 1 \text{ max.}$ indicates the maximum diameter of the strands.



	Plating							Dat.	Name	 All Dim. in mm Orig. Size DIN A 4	Male High voltage contact, straight cable termination for AWG 20, solder	Maßstab/ Scale 5:1
Mating area	1,3 µm Au						Detail.	02/01/02	AF			
Termination area	1,3 µm AU						Insp.					
							Stand.					
							HARTING EURL F-95972 Paris				TB 09 69 281 2550	Blatt/ Page 1 / 1
				29742	02/01/02	AF						
				Mod.	Dat.	Name						