



Chipsmall Limited consists of a professional team with an average of over 10 year of expertise in the distribution of electronic components. Based in Hongkong, we have already established firm and mutual-benefit business relationships with customers from,Europe,America and south Asia,supplying obsolete and hard-to-find components to meet their specific needs.

With the principle of "Quality Parts,Customers Priority,Honest Operation,and Considerate Service",our business mainly focus on the distribution of electronic components. Line cards we deal with include Microchip,ALPS,ROHM,Xilinx,Pulse,ON,Everlight and Freescale. Main products comprise IC,Modules,Potentiometer,IC Socket,Relay,Connector.Our parts cover such applications as commercial,industrial, and automotives areas.

We are looking forward to setting up business relationship with you and hope to provide you with the best service and solution. Let us make a better world for our industry!



Contact us

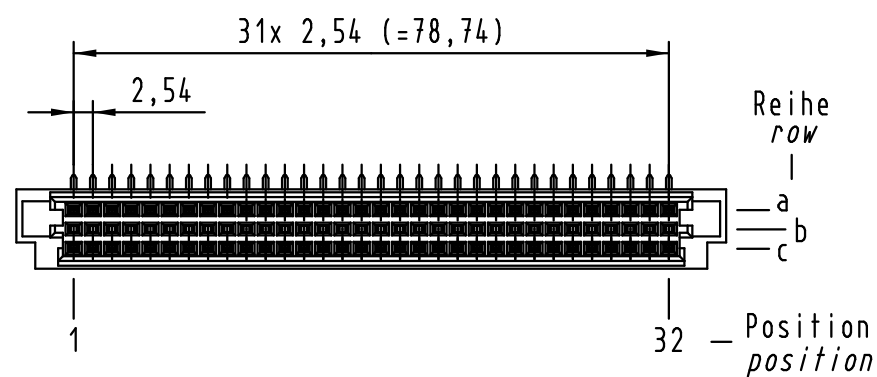
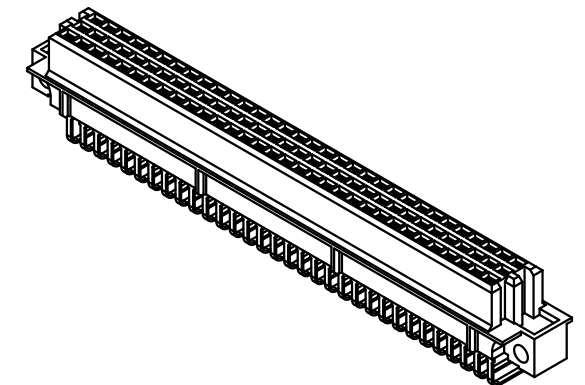
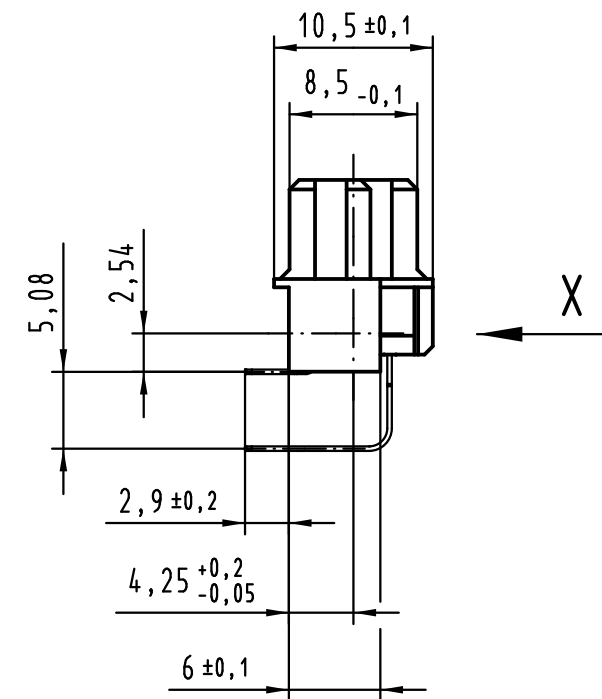
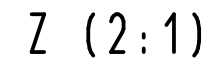
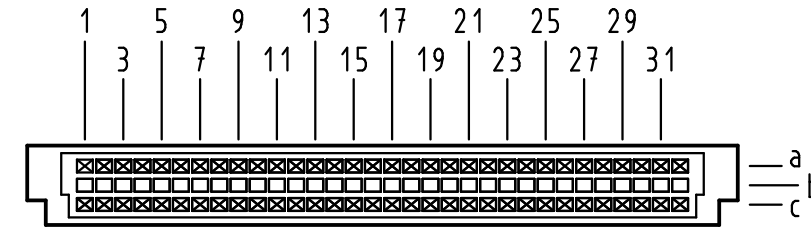
Tel: +86-755-8981 8866 Fax: +86-755-8427 6832

Email & Skype: info@chipsmall.com Web: www.chipsmall.com



Address: A1208, Overseas Decoration Building, #122 Zhenhua RD., Futian, Shenzhen, China



□ = Kontaktposition nicht belegt
= *position without contact*



1 weitere Informationen siehe: DS 09 73 220 02 01
further information see: DS 09 73 220 02 01

 All Dimensions in mm Original Size DIN A 3			Techn. Character.			Nicht tolerierte Maß/Free size tolerances IEC 60603-2		
				Dat.	Name	Maßstab/Scale 1 : 1	har-bus R LM Federleiste Einlöt , 64-polig <i>har-bus R LM female connector solder , 64-pole</i>	
36425	23.08.11	Hage.	Detail.	13.09.99	Rie.			
35443	11.11.08	LehT	Insp.	13.09.99	Pa.			
31034	04.06.02	Rie.	Stand.					
27555	04.02.00	Rie.	HARTING Electronics GmbH & Co. KG D-32339 ESPELKAMP				TB 09 79 264 x801	Blatt/ page /
26086								
Mod.	Dat.	Name						
			Sub.					