



Chipsmall Limited consists of a professional team with an average of over 10 year of expertise in the distribution of electronic components. Based in Hongkong, we have already established firm and mutual-benefit business relationships with customers from,Europe,America and south Asia,supplying obsolete and hard-to-find components to meet their specific needs.

With the principle of "Quality Parts,Customers Priority,Honest Operation,and Considerate Service",our business mainly focus on the distribution of electronic components. Line cards we deal with include Microchip,ALPS,ROHM,Xilinx,Pulse,ON,Everlight and Freescale. Main products comprise IC,Modules,Potentiometer,IC Socket,Relay,Connector.Our parts cover such applications as commercial,industrial, and automotives areas.

We are looking forward to setting up business relationship with you and hope to provide you with the best service and solution. Let us make a better world for our industry!



Contact us

Tel: +86-755-8981 8866 Fax: +86-755-8427 6832

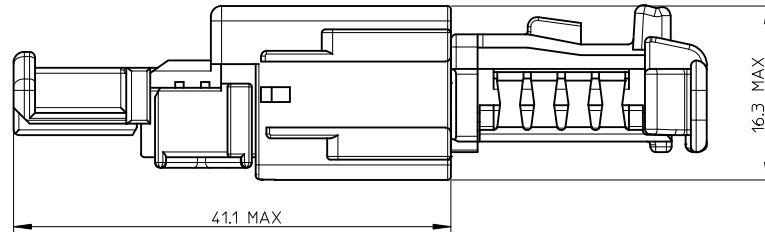
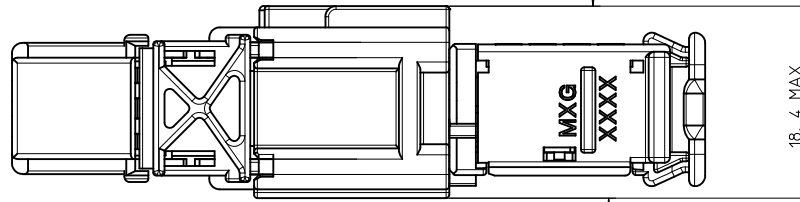
Email & Skype: info@chipsmall.com Web: www.chipsmall.com

Address: A1208, Overseas Decoration Building, #122 Zhenhua RD., Futian, Shenzhen, China



HANDLING AREA

AREA REQUIRED TO MATE
AND UNMATE THE CONNECTOR

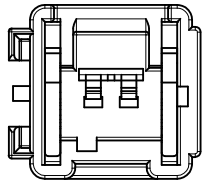
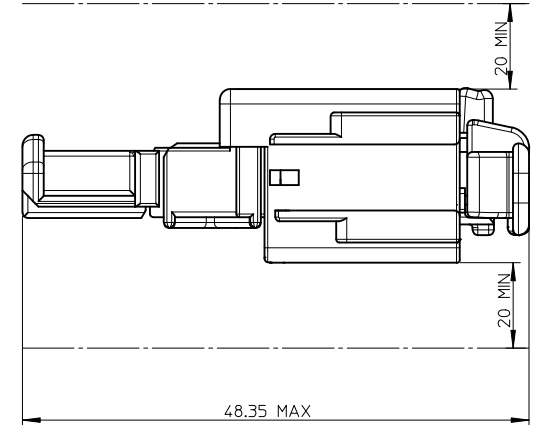


NOTE : 1 - The using conditions are shown in the MOLEX specification n°AS-98821-001.

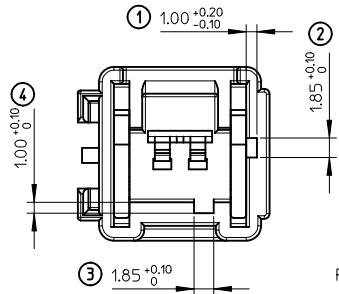
2 - Male terminal used : SICMA 3 1.5mm

3 - Male connector will mate with female connector P/N 098817102x

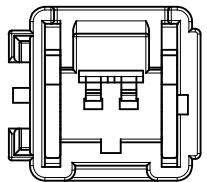
AREA REQUIRED WHEN THE CONNECTOR IS MATED



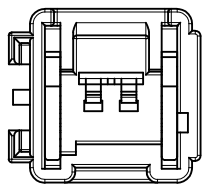
WHITE CODING
P/N 0988221020



BLACK CODING
P/N 0988221021

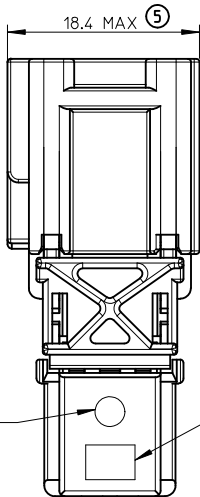


GREY CODING
P/N 0988221028

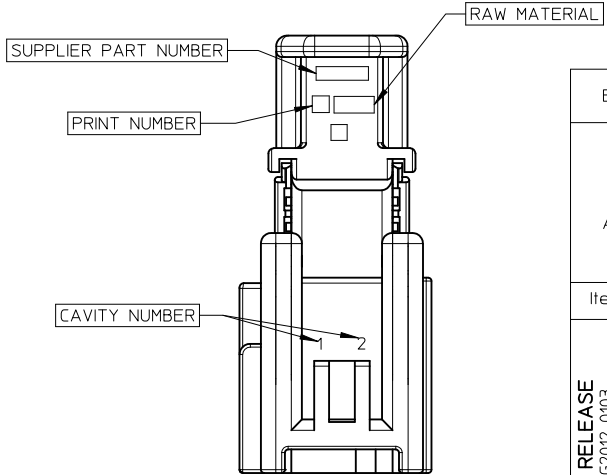
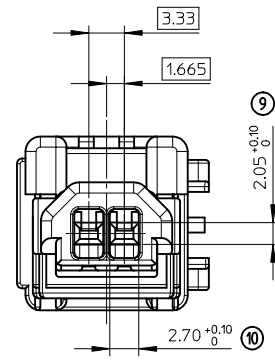
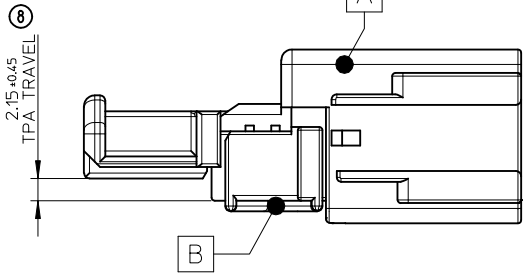
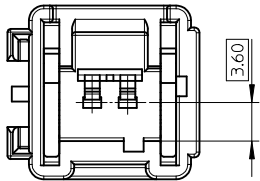
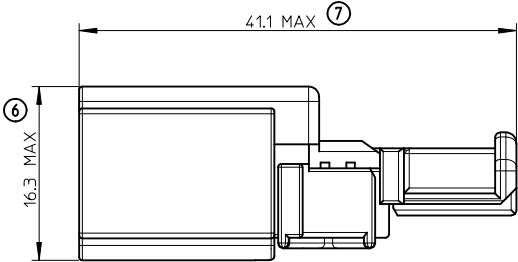
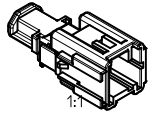


GREEN CODING
P/N 0988221025

FIRST RELEASE EC NO: G2012-0103 DRAWN BY: VJOUAS 2012/01/12 CHKD: AHERBELIN 2011/01/13 APPR: OPLESSIS 2012/01/26	QUALITY SYMBOLS ∇=0 ∇=0 ∇=0	GENERAL TOLERANCES (UNLESS SPECIFIED)		DIMENSION STYLE MM ONLY	SCALE 3:1	DESIGN UNITS METRIC	FIRST ANGLE PROJECTION	
		4 PLACES ± --- ± ---	mm INCH	DRAWN BY VJOUAS	DATE 2012/01/12	TITLE NSCC PIN CONN 1.5 2CKT		
		3 PLACES ± --- ± ---		CHECKED BY AHERBELIN	DATE 2011/01/13	MOLEX INCORPORATED		
		2 PLACES ± --- ± ---		APPROVED BY OPLESSIS	DATE 2012/01/26	MATERIAL NO. SEE SHEET 2	DOCUMENT NO. SD-98822-004	SHEET NO. 1 OF 2
		1 PLACE ± 0.1 ± ---		THIS DRAWING CONTAINS INFORMATION THAT IS PROPRIETARY TO MOLEX INCORPORATED AND SHOULD NOT BE USED WITHOUT WRITTEN PERMISSION				
		ANGULAR ± 1°						
		DRAFT WHERE APPLICABLE MUST REMAIN WITHIN DIMENSIONS						



0988221028	GREY
0988221025	GREEN
0988221021	BLACK
0988221020	WHITE
PART NUMBER	COLOR
ASSEMBLY PART	



BLACK CODING (P/N 0988221021) IS SHOWN.

B	SCC Pin Conn 15x0.8 TPA 2Ckt	0988220124	Yellow	POLYAMIDE >PA66-GF20<	4.508	
A	SCC Pin Conn Unseated 15x0.8 2Ckt	0988220028	Grey	POLYESTER >PBT<		
		0988220025	Green			
		0988220021	Black			
		0988220020	White			
Item	Description	Part-number	Color	Raw Material	Weight effective (g)	
FIRST RELEASE EC NO: G2012-0103 DRAWN: VJOUAS 2012/01/12 CHKD: AHERBEL IN 2011/01/13 APPR: OPLESSIS 2012/01/26		QUALITY SYMBOLS GENERAL TOLERANCES (UNLESS SPECIFIED) 4 PLACES ± --- ± --- 3 PLACES ± --- ± --- 2 PLACES ± --- ± --- 1 PLACE ± 0.1 ± --- ANGULAR ± 1 °		DIMENSION STYLE MM ONLY DRAWN BY VJOUAS DATE 2012/01/12 CHECKED BY AHERBEL IN DATE 2011/01/13 APPROVED BY OPLESSIS DATE 2012/01/26		SCALE 3:1 DESIGN UNITS METRIC FIRST ANGLE PROJECTION
DRAFT WHERE APPLICABLE MUST REMAIN WITHIN DIMENSIONS		SEE CHART		TITLE NSCC PIN CONN 1.5 2CKT MATERIAL NO. SD-98822-004 DOCUMENT NO. SD-98822-004 SHEET NO. 2 OF 2		
THIS DRAWING CONTAINS INFORMATION THAT IS PROPRIETARY TO MOLEX INCORPORATED AND SHOULD NOT BE USED WITHOUT WRITTEN PERMISSION						