



Chipsmall Limited consists of a professional team with an average of over 10 year of expertise in the distribution of electronic components. Based in Hongkong, we have already established firm and mutual-benefit business relationships with customers from,Europe,America and south Asia,supplying obsolete and hard-to-find components to meet their specific needs.

With the principle of “Quality Parts,Customers Priority,Honest Operation,and Considerate Service”,our business mainly focus on the distribution of electronic components. Line cards we deal with include Microchip,ALPS,ROHM,Xilinx,Pulse,ON,Everlight and Freescale. Main products comprise IC,Modules,Potentiometer,IC Socket,Relay,Connector.Our parts cover such applications as commercial,industrial, and automotives areas.

We are looking forward to setting up business relationship with you and hope to provide you with the best service and solution. Let us make a better world for our industry!



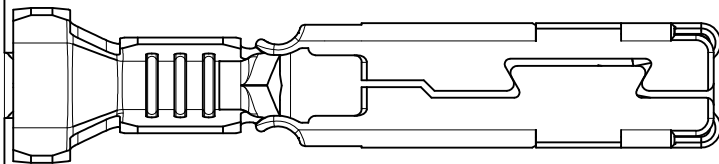
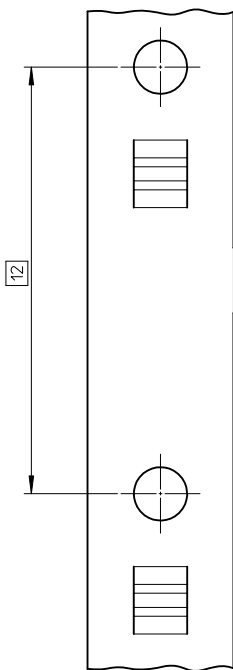
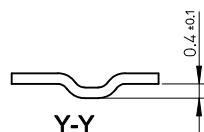
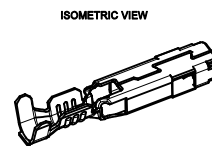
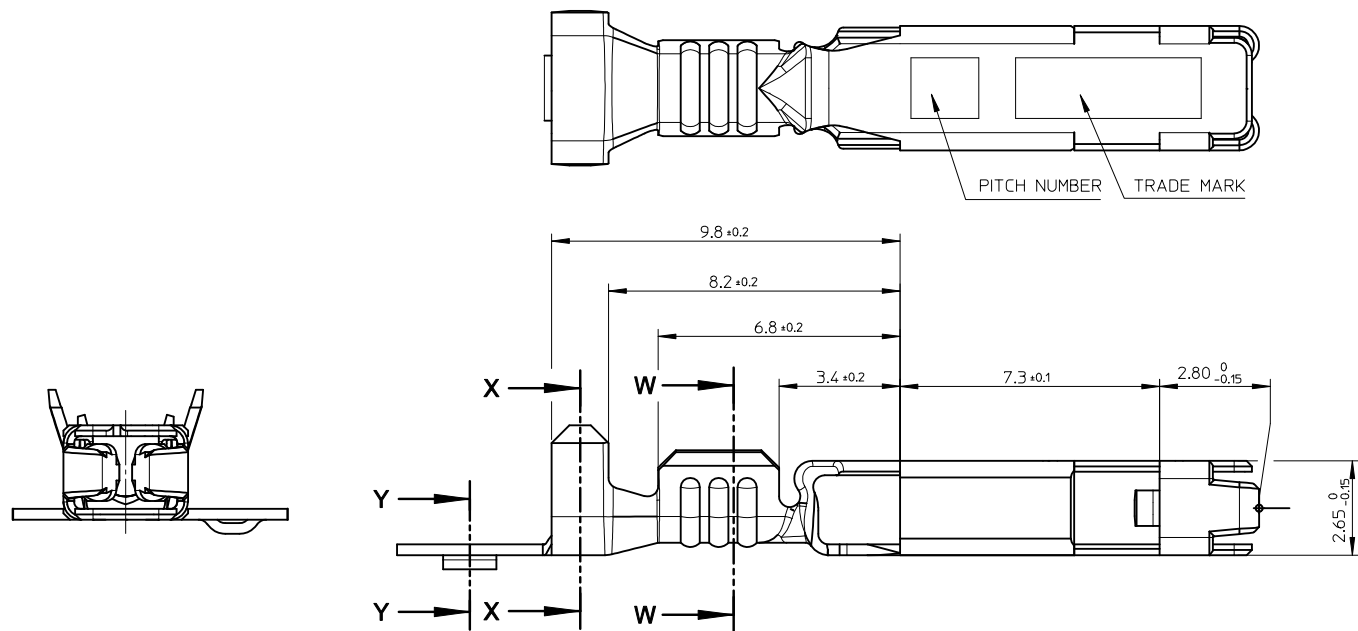
## Contact us

Tel: +86-755-8981 8866 Fax: +86-755-8427 6832

Email & Skype: [info@chipsmall.com](mailto:info@chipsmall.com) Web: [www.chipsmall.com](http://www.chipsmall.com)





Address: A1208, Overseas Decoration Building, #122 Zhenhua RD., Futian, Shenzhen, China





**NOTE:**  
CRIMPING SPEC : AS-98897-001  
PACKAGING SPEC : PK-98897-001

SPECIFICATIONS			
GRIP CODE	S	M	L
REAL SECTION MM2	0.22 to 0.44	0.49 to 0.94	0.95 to 1.87
MOLEX PART NUMBER (P/N)	0988971109	0988971119	0988971129
PLATING	Pre-plated 2µ Sn min.	Pre-plated 2µ Sn min.	Pre-plated 2µ Sn min.
MATERIAL	HIGH COPPER		
PART WEIGHT (g)	0.3582	0.3778	0.3955
THICKNESS	0.30		
A	2.40	2.70	3.10
B	1.90	2.60	3.50
Ø E	1.20	1.40	1.60
C	4.20	4.35	4.70
D	3.30	3.65	4.20
Ø F	2.40	2.50	2.70

MODIFY CRIMP AND PACKAGING NUMBER	REV	DESCRIPTION	QUALITY SYMBOLS	GENERAL TOLERANCES (UNLESS SPECIFIED)		DIMENSION STYLE		SCALE	DESIGN UNITS	 FIRST ANGLE PROJECTION	TITLE
				mm	INCH	MM ONLY					
EC NO: G2012-0124 DRWN:VJOUAS CHKD:JDCULOS APPR:OPLESSIS			 =0	4 PLACES	± ---	± ---	DRAWN BY	DATE	10:1	METRIC	NSCC 1.5 WIRE TERMINAL
			 =0	3 PLACES	± ---	± ---	G. DESBRUERES	2009/11/03			
			 =0	2 PLACES	± 0.10	± ---	CHECKED BY	DATE			
				1 PLACE	± 0.1	± ---	D. DOS SANTOS	2009/11/03			
				ANGULAR ± 2 °		APPROVED BY	DATE	MOLEX MOLEX INCORPORATED			
				DRAFT WHERE APPLICABLE MUST REMAIN WITHIN DIMENSIONS		OPLESSIS	2010/10/26				
						MATERIAL NO.		DOCUMENT NO.		SHEET NO.	
						SIZE	SEE CHART	SD-98897-050		1 OF 1	
THIS DRAWING CONTAINS INFORMATION THAT IS PROPRIETARY TO MOLEX INCORPORATED AND SHOULD NOT BE USED WITHOUT WRITTEN PERMISSION											