



Chipsmall Limited consists of a professional team with an average of over 10 year of expertise in the distribution of electronic components. Based in Hongkong, we have already established firm and mutual-benefit business relationships with customers from,Europe,America and south Asia,supplying obsolete and hard-to-find components to meet their specific needs.

With the principle of "Quality Parts,Customers Priority,Honest Operation,and Considerate Service",our business mainly focus on the distribution of electronic components. Line cards we deal with include Microchip,ALPS,ROHM,Xilinx,Pulse,ON,Everlight and Freescale. Main products comprise IC,Modules,Potentiometer,IC Socket,Relay,Connector.Our parts cover such applications as commercial,industrial, and automotives areas.

We are looking forward to setting up business relationship with you and hope to provide you with the best service and solution. Let us make a better world for our industry!



## Contact us

Tel: +86-755-8981 8866 Fax: +86-755-8427 6832

Email & Skype: info@chipsmall.com Web: www.chipsmall.com

Address: A1208, Overseas Decoration Building, #122 Zhenhua RD., Futian, Shenzhen, China



# SLC CLASS G FUSES

480/600 VAC • Time-Delay • 1/2-60 A



## Description

Littelfuse SLC fuses provide cost effective branch circuit protection. Fuse length varies to prevent over-fusing. Compact Class G fuses were the first fuse series to approach mid-gate fuse dimensions and meet NEC® requirements for branch-circuit protection.

## Features/Benefits

- Branch circuit rated
- Current-limiting
- 100 kA interrupting rating
- 600 VAC rated 1/2-20 A

## Applications

- Branch circuit protection

## Web Resources

Download TC Curves, CAD drawings and other technical information: [littelfuse.com/slc](http://littelfuse.com/slc)

## Recommended Fuse Holders

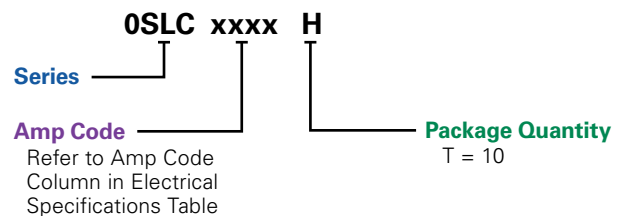
LFG60 Series (1-20 A)  
LFG48 Series (25-60 A)

## Specifications

|                             |                                                                                                                                      |
|-----------------------------|--------------------------------------------------------------------------------------------------------------------------------------|
| <b>Voltage Ratings</b>      | 600 VAC (1/2 – 20 A)<br>480 VAC (25 – 60 A)<br>170 VDC (1/2 – 60 A) (Littelfuse self-certified)                                      |
| <b>Interrupting Ratings</b> | AC: 100 kA rms symmetrical<br>DC: 10 kA                                                                                              |
| <b>Ampere Range</b>         | 1/2 – 60 A                                                                                                                           |
| <b>Approvals</b>            | Standard 248-5, Class G<br>UL Listed (File: E81895)<br>CSA Certified (File: LR29862)<br>Federal Specification WF-1814 (QPL-W-F-1814) |
| <b>Environmental</b>        | RoHS Compliant                                                                                                                       |

## Ordering Information

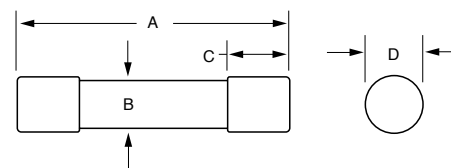
### Part Numbering System



| SERIES | AMP | PACKAGE QUANTITY | CATALOG NUMBER | ORDERING NUMBER |
|--------|-----|------------------|----------------|-----------------|
| SLC    | 2   | 10               | SLC002         | OSLC002.T       |

## Dimensions

### Ferrule Version



| AMP      | DIMENSIONS INCHES (mm) |           |            |              |
|----------|------------------------|-----------|------------|--------------|
|          | A                      | B         | C          | D            |
| 1/2 – 15 | 1 5/16 (33.3)          | 3/8 (9.5) | 9/32 (7.1) | 13/32 (10.3) |
| 20       | 1 13/32 (35.7)         | 3/8 (9.5) | 9/32 (7.1) | 13/32 (10.3) |
| 25, 30   | 1 5/8 (41.3)           | 3/8 (9.5) | 9/32 (7.1) | 13/32 (10.3) |
| 35 – 60  | 2 1/4 (57.2)           | 3/8 (9.5) | 1/2 (12.7) | 13/32 (10.3) |