



Chipsmall Limited consists of a professional team with an average of over 10 year of expertise in the distribution of electronic components. Based in Hongkong, we have already established firm and mutual-benefit business relationships with customers from,Europe,America and south Asia,supplying obsolete and hard-to-find components to meet their specific needs.

With the principle of “Quality Parts,Customers Priority,Honest Operation,and Considerate Service”,our business mainly focus on the distribution of electronic components. Line cards we deal with include Microchip,ALPS,ROHM,Xilinx,Pulse,ON,Everlight and Freescale. Main products comprise IC,Modules,Potentiometer,IC Socket,Relay,Connector.Our parts cover such applications as commercial,industrial, and automotives areas.

We are looking forward to setting up business relationship with you and hope to provide you with the best service and solution. Let us make a better world for our industry!



Contact us

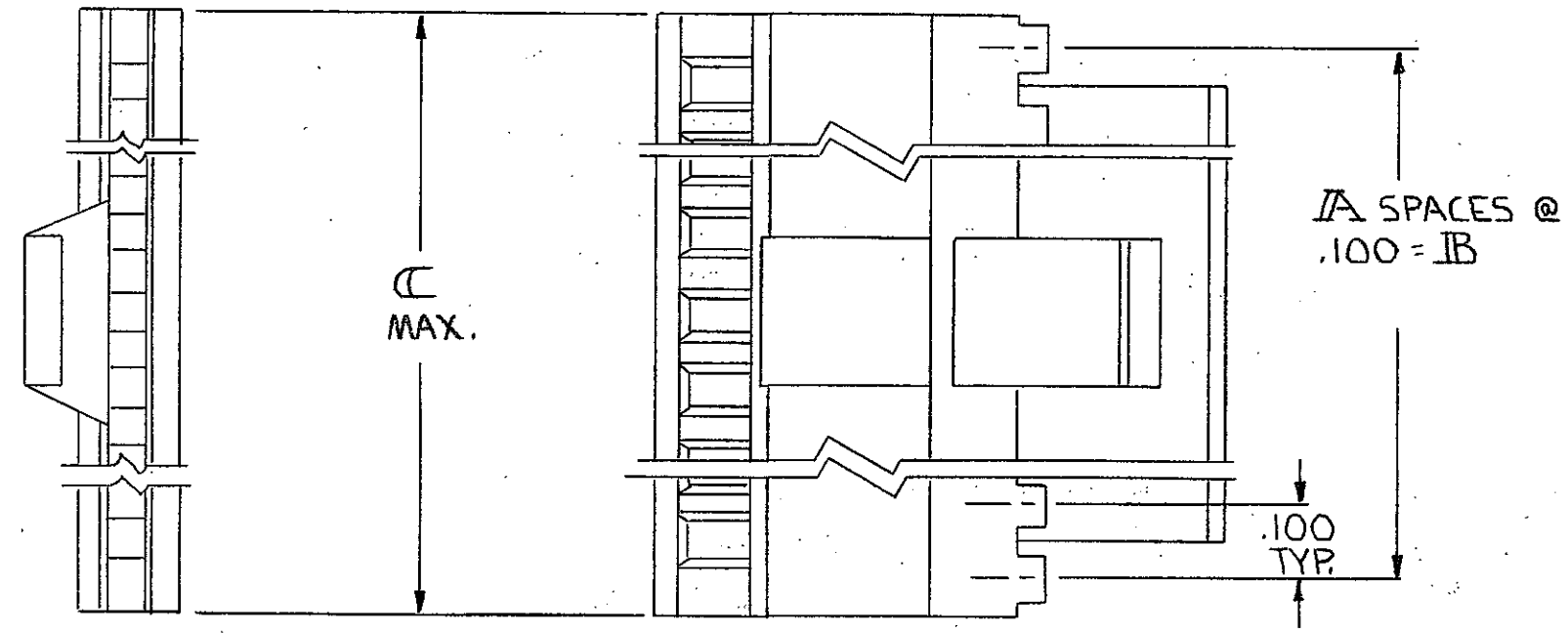
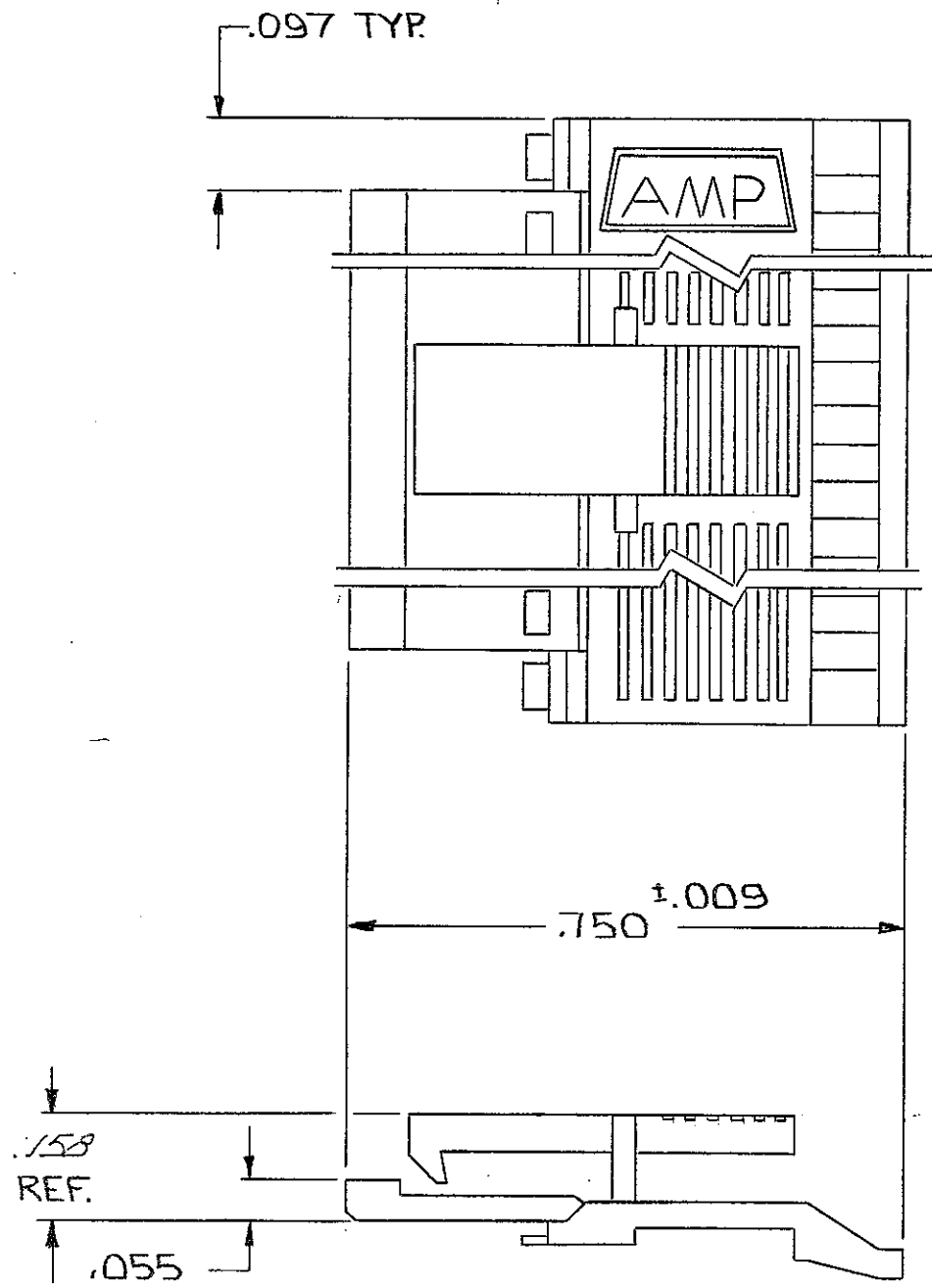
Tel: +86-755-8981 8866 Fax: +86-755-8427 6832

Email & Skype: info@chipsmall.com Web: www.chipsmall.com

Address: A1208, Overseas Decoration Building, #122 Zhenhua RD., Futian, Shenzhen, China



REVISIONS					
P	F	ZONE	LTR	DESCRIPTION	DATE APPROVED
0			E2	REVISED PER ECO-11-005140	31MAR11 HMR



- 1. NO. OF POS. PERTAINS TO HOUSING SIZE.
- 2. THIS COVER TO BE USED WITH 102536.
- ③ OBSOLETE PART NUMBER
- ④ OBSOLETE PARTS: OBSOLETE CIS STREAMLINING PER D.RENAUD/D.SINISI

3.600	3.500	35	72	3-102681	③-1	
3.500	3.400	34	70	3-	③-0	
3.400	3.300	33	68	2-	③-9	
3.300	3.200	32	66	2-	③-8	
3.200	3.100	31	64	2-	③-7	
3.100	3.000	30	62	2-	③-6	
3.000	2.900	29	60	2-	③-5	
2.900	2.800	28	58	2-	③-4	
2.800	2.700	27	56	2-	③-3	
2.700	2.600	26	54	2-	③-2	
2.600	2.500	25	52	2-	③-1	
2.500	2.400	24	50	2-	-0	
2.400	2.300	23	48	1-	③-9	
2.300	2.200	22	46	1-	③-8	
2.200	2.100	21	44	1-	③-7	
2.100	2.000	20	42	1-	③-6	
2.000	1.900	19	40	1-	-5	
1.900	1.800	18	38	1-	③-4	
1.800	1.700	17	36	1-	③-3	
1.700	1.600	16	34	1-	-2	
④ OBSOLETE	1.600	1.500	15	32	1-	-1
1.500	1.400	14	30	1-	-0	
1.400	1.300	13	28		-9	
1.300	1.200	12	26		-8	
1.200	1.100	11	24		-7	
④ OBSOLETE	1.100	1.000	10	22		-6
1.000	.900	9	20		-5	
.900	.800	8	18		-4	
.800	.700	7	16		-3	
.700	.600	6	14		-2	
.600	.500	5	12	102681-1		
C	B	A	NO. OF POS.	PART NO		

UNLESS OTHERWISE SPECIFIED DIMENSIONS ARE IN INCHES. TOLERANCES ON: DECIMALS ±.005 ANGLES ±	CONTRACT NO	TE Connectivity		
	DR <i>D. Schmitt</i> 10-31-80 CHK <i>P. J. Ruppberg</i> 11-2-80 ARPD <i>W. A. Berry</i> 11-4-80 APPD <i>Lucas</i> 4 Nov 80			NAME COVER-HALF, LATCH, MASS TERMINATION, AMPMODU, .100 €, FULL BAR POLARIZATION
MATERIAL FLAME RETARDANT THERMOPLASTIC COLOR= BLACK	DSGN APPD	SIZE	CODE IDENT NO	DRAWING NO
FINISH	OTHER APPD	C	00779	102681
		SCALE	SHEET 1 OF 1	