



Chipsmall Limited consists of a professional team with an average of over 10 year of expertise in the distribution of electronic components. Based in Hongkong, we have already established firm and mutual-benefit business relationships with customers from,Europe,America and south Asia,supplying obsolete and hard-to-find components to meet their specific needs.

With the principle of “Quality Parts,Customers Priority,Honest Operation,and Considerate Service”,our business mainly focus on the distribution of electronic components. Line cards we deal with include Microchip,ALPS,ROHM,Xilinx,Pulse,ON,Everlight and Freescale. Main products comprise IC,Modules,Potentiometer,IC Socket,Relay,Connector.Our parts cover such applications as commercial,industrial, and automotives areas.

We are looking forward to setting up business relationship with you and hope to provide you with the best service and solution. Let us make a better world for our industry!



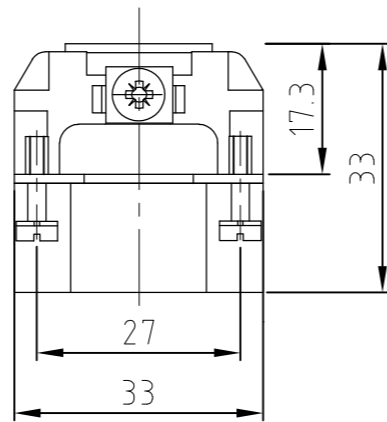
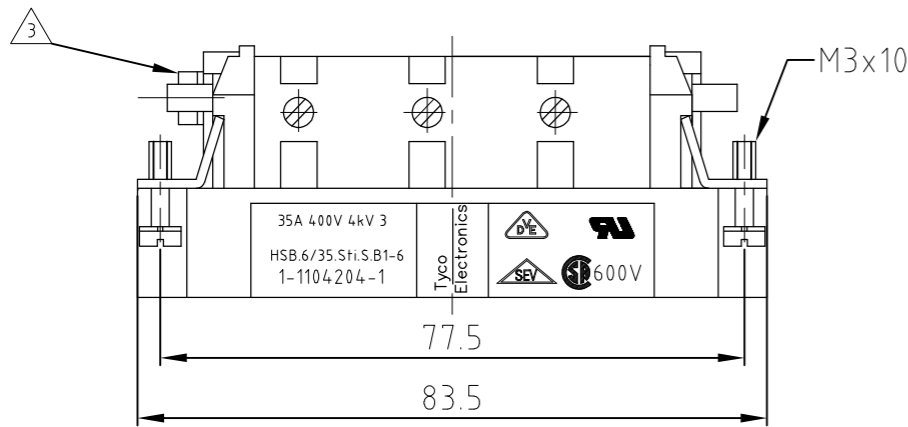
Contact us

Tel: +86-755-8981 8866 Fax: +86-755-8427 6832

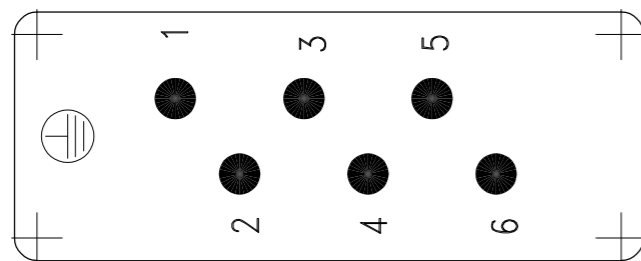
Email & Skype: info@chipsmall.com Web: www.chipsmall.com

Address: A1208, Overseas Decoration Building, #122 Zhenhua RD., Futian, Shenzhen, China

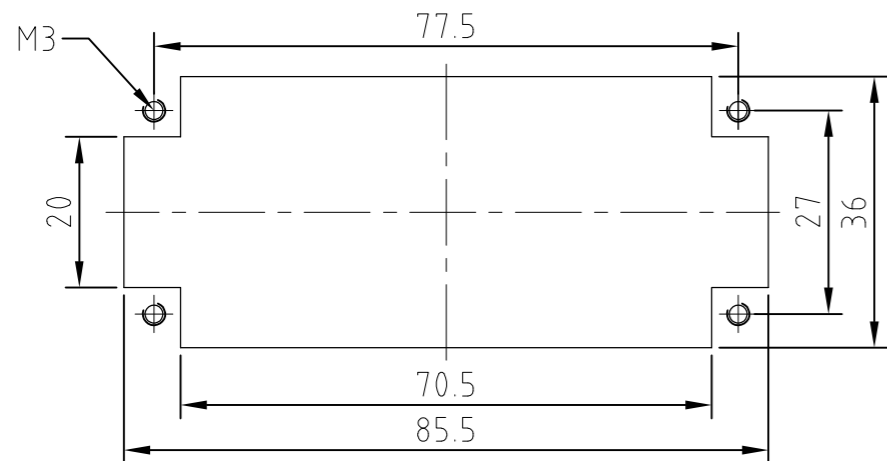




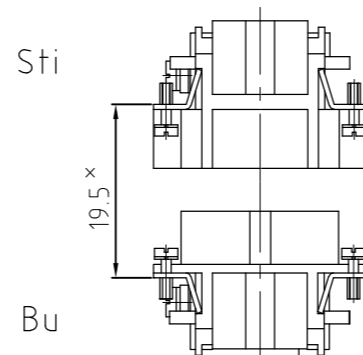
Contact arrangement view from termination side



Panel cut-out for contact insert when used without housing



Assembling instruction



x Distance for guaranteed contact max: 21 mm

NOTES

- 1 FINISH: CONTACT , AG
- 2 POWER CONTACT: 1 TO 6
OUTER DIMENSIONS OF INSULATION: MAX. ϕ 7.0 MM
- 3 GROUNDING CONTACT
- 4 SUITABLE HOOD SIZE 6: SERIES HB; HD; EMV; HIP
- 5 STANDARDS:
DIN EN 61984; DIN EN 60664-1
- 6 PACKAGING: 5 PIECES IN A CARTON
- 7 PACKAGING: 200 PIECES IN A BOX

1	1	MALE INSERT	beige	1	-
0-1	1-1	DESCRIPTION / BENENNUNG	MATERIAL	COLOR / FARBE	ITEM NO. POS.
7	6	<p>THIS DRAWING IS A CONTROLLED DOCUMENT FOR AMP INCORPORATED. IT IS SUBJECT TO CHANGE AND THE CONTROLLING ENGINEERING ORGANIZATION SHOULD BE CONTACTED FOR THE LATEST REVISION. DIESES ZEICHNUNGSDOKUMENT WIRD DURCH AMP INCORPORATED KONTROLLIERT. ÄNDERUNGEN, DIE DEM TECHNISCHEN FORTSCHRITT DIENEN, SIND VORBEHALTEN. DEN JEWELNS LETZTGÜELTIGEN ÄNDERUNGSSTAND ERFAHREN SIE AUF ANFRAGE.</p> <p>DIMENSIONS: DIMENSIONEN: mm</p> <p>TOLERANCES UNLESS OTHERWISE SPECIFIED: ALLGEMEINTOLERANZEN</p> <p>n. ISO 8015 n. ISO 2768 - mH - E n. DIN 16901 - 140</p> <p>0 PLC # 1 PLC # 2 PLC # 3 PLC #</p> <p>ANGLES / WINKEL # FINISH / OBERFLÄCHE / FARBE</p>	DWN Schweiger 18.06.1997	HTS Elektrotechnik 53819 Neunkirchen, Germany	
HSB.6/35.Sti.S.B1-6.KM	HSB.6/35.Sti.S.B1-6		CHK Kramer 04.06.98	APVD -	NAME MALE INSERT HSB.6/35.Sti.S.B1-6
ORDERING TEXT / BESTELLTEXT		PRODUCT SPEC PRODUKTSPEZ. 108-74006	APPLICATION SPEC VERARBEITUNGSSPEZ. 114-74007	SIZE A3	CAGE CODE 00779
		WEIGHT GEWICHT 86 g	DRAWING NO ZEICHNUNGS-NR. C-1104204		RESTRICTED TO NUR FUER -
		CUSTOMER DRAWING / KUNDENZEICHNUNG		MASSSTAB 1:1	BLATT 1 OF VON 1
				REV A4	