



Chipsmall Limited consists of a professional team with an average of over 10 year of expertise in the distribution of electronic components. Based in Hongkong, we have already established firm and mutual-benefit business relationships with customers from,Europe,America and south Asia,supplying obsolete and hard-to-find components to meet their specific needs.

With the principle of “Quality Parts,Customers Priority,Honest Operation,and Considerate Service”,our business mainly focus on the distribution of electronic components. Line cards we deal with include Microchip,ALPS,ROHM,Xilinx,Pulse,ON,Everlight and Freescale. Main products comprise IC,Modules,Potentiometer,IC Socket,Relay,Connector.Our parts cover such applications as commercial,industrial, and automotives areas.

We are looking forward to setting up business relationship with you and hope to provide you with the best service and solution. Let us make a better world for our industry!



Contact us

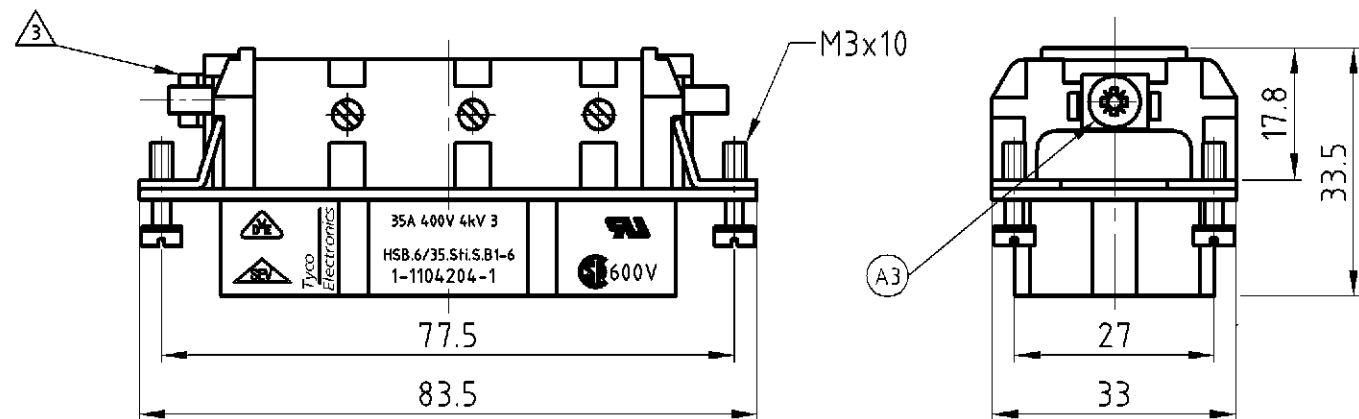
Tel: +86-755-8981 8866 Fax: +86-755-8427 6832

Email & Skype: info@chipsmall.com Web: www.chipsmall.com

Address: A1208, Overseas Decoration Building, #122 Zhenhua RD., Futian, Shenzhen, China



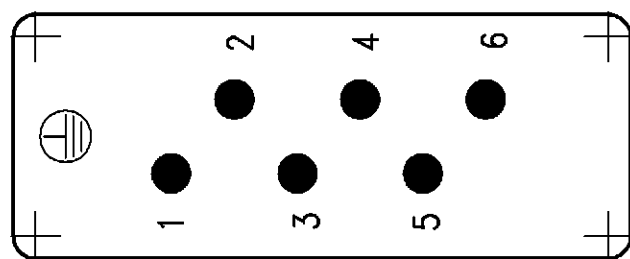
LOC	DIST	REVISIONS ÄNDERUNGEN					
A1	-	P	LTR	DESCRIPTION BESCHREIBUNG	DATE	DWN	APVD
PROJEKT NR.:		A3		Notes and design changed ECR-06-020881	30.08.06	SR	SM



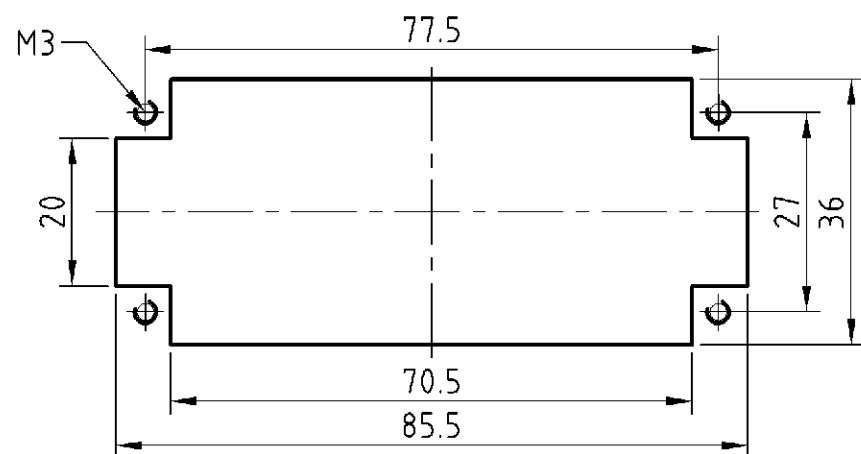
NOTES

- ① FINISH: CONTACT , AG
- ② POWER CONTACT: 1 TO 6
OUTER DIMENSIONS OF INSULATION: MAX. ϕ 7.0 MM
- ③ GROUNDING CONTACT
- ④ SUITABLE HOOD SIZE 6: SERIES HB; HD; EMV; HIP
- ⑤ STANDARDS:
DIN EN 61984; DIN EN 60664-1
- ⑥ PACKAGING: 5 PIECES IN A CARTON
- ⑦ PACKAGING: 270 PIECES IN A BOX

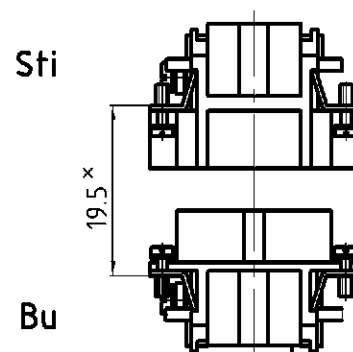
Contact arrangement view from termination side



Panel cut-out for contact insert when used without housing



Assembling instruction



X Distance for guaranteed contact max: 21 mm

1	1	Female insert	beige	1	REMARKS			
0-11-1	DESCRIPTION		MATERIAL	COLOR	ITEM NO. POS.			
HSB.6/35.Bu.S.B1-6.KM	HSB.6/35.Bu.S.B1-6	ORDERING TEXT / BESTELLTEXT	<small>THIS DRAWING IS A CONTROLLED DOCUMENT FOR AMP INCORPORATED. IT IS SUBJECT TO CHANGE AND THE CONTROLLING ENGINEERING ORGANIZATION SHOULD BE CONTACTED FOR THE LATEST REVISION. DIESES ZEICHNUNGSDOKUMENT WIRD DURCH AMP INCORPORATED KONTROLLIERT. ÄNDERUNGEN, DIE DEM TECHNISCHEN FORTSCHRITT DIENEN, SIND VORBEHALTEN. DEN JEWELN LETZT GÜELTIGEN ÄNDERUNGSSTAND ERFAHREN SIE AUF ANFRAGE.</small>		DWN Schweiger 18.06.1997	AMP HTS Elektrotechnik 53819 Neunkirchen, Germany		
			DIMENSIONS: DIMENSIONEN: mm	TOLERANCES UNLESS OTHERWISE SPECIFIED: ALLGEMEINTOLERANZEN n. ISO 8015 n. ISO 2768 - mH - E n. DIN 16901 - 14.0	CHK Kramer 04.06.98		APVD -	
				0 PLC # 1 PLC # 2 PLC # 3 PLC #	PRODUCT SPEC PRODUKTSPEZ. 108-74006		NAME FEMALE INSERT HSB.6/35.Bu.S.B1-6	
			MATERIAL	ANGLES /WINKEL # FINISH /OBERFLÄCHE/FARBE	APPLICATION SPEC VERARBEITUNGSSPEZ. 114-74007		SIZE A3	CAGE CODE 00779
			WEIGHT GEWICHT 90 g	CUSTOMER DRAWING /KUNDENZEICHNUNG	MASSSTAB 1:1	BLATT 1	OF VON 1	REV A3