



Chipsmall Limited consists of a professional team with an average of over 10 year of expertise in the distribution of electronic components. Based in Hongkong, we have already established firm and mutual-benefit business relationships with customers from,Europe,America and south Asia,supplying obsolete and hard-to-find components to meet their specific needs.

With the principle of "Quality Parts,Customers Priority,Honest Operation,and Considerate Service",our business mainly focus on the distribution of electronic components. Line cards we deal with include Microchip,ALPS,ROHM,Xilinx,Pulse,ON,Everlight and Freescale. Main products comprise IC,Modules,Potentiometer,IC Socket,Relay,Connector.Our parts cover such applications as commercial,industrial, and automotives areas.

We are looking forward to setting up business relationship with you and hope to provide you with the best service and solution. Let us make a better world for our industry!



## Contact us

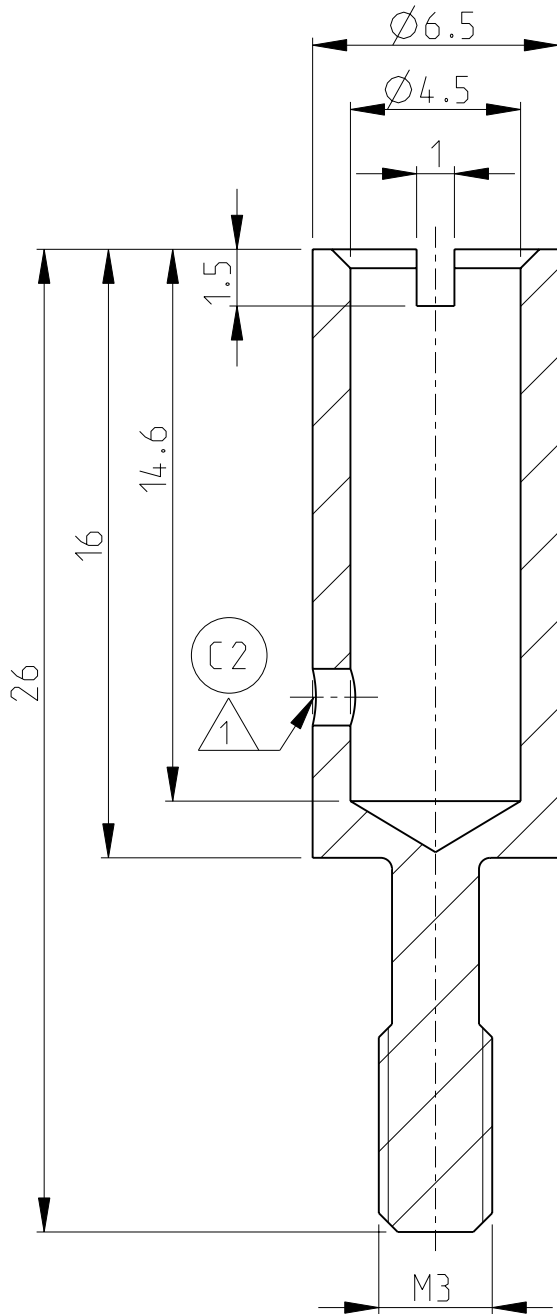
Tel: +86-755-8981 8866 Fax: +86-755-8427 6832

Email & Skype: info@chipsmall.com Web: www.chipsmall.com

Address: A1208, Overseas Decoration Building, #122 Zhenhua RD., Futian, Shenzhen, China

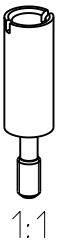


LOC	DIST	REVISIONS			
P	LTR	DESCRIPTION	DATE	DWN	APVD
A1	-	C1	REWORKED PER ECR - 016353	25JAN2008	GW ST
		C2	ECR-11-017158	15AUG2011	SR TV



- Notes
- 1 HOLE CAN BE PLACED OPTIONAL FOR PLATING DETAILS
  - 2 PACKAGING: PACKED IN A BAG  
QUANTITY: 50 PIECES

PN 1-1  
AS SHOWN



1:1

2006

RELEASED FOR PUBLICATION

ALL RIGHTS RESERVED.

Tyco Electronics AMP GmbH

© COPYRIGHT 2006

THIS DRAWING IS UNPUBLISHED.

DIMENSIONS: mm	DWN G.WROBLEW SKI	25JAN2008	MATERIAL	-	FINISH	-
	CHK T.SCHNURPFEIL	25JAN2008	TE Connectivity			
TOLERANCES UNLESS OTHERWISE SPECIFIED:	APVD T.SCHNURPFEIL	25JAN2008				
0 PLC ± 1 PLC ± 2 PLC ± 3 PLC ± 4 PLC ± ANGLES ±°	PRODUCT SPEC	-	NAME PILOT SOCKET F-BU-M3			
	APPLICATION SPEC	-	SIZE	CAGE CODE	DRAWING NO	RESTRICTED TO
	WEIGHT	-	A 4	00779	C=1106101	-
CUSTOMER DRAWING			SCALE	5:1	SHEET	1 OF 1 REV C2