



Chipsmall Limited consists of a professional team with an average of over 10 year of expertise in the distribution of electronic components. Based in Hongkong, we have already established firm and mutual-benefit business relationships with customers from,Europe,America and south Asia,supplying obsolete and hard-to-find components to meet their specific needs.

With the principle of “Quality Parts,Customers Priority,Honest Operation,and Considerate Service”,our business mainly focus on the distribution of electronic components. Line cards we deal with include Microchip,ALPS,ROHM,Xilinx,Pulse,ON,Everlight and Freescale. Main products comprise IC,Modules,Potentiometer,IC Socket,Relay,Connector.Our parts cover such applications as commercial,industrial, and automotives areas.

We are looking forward to setting up business relationship with you and hope to provide you with the best service and solution. Let us make a better world for our industry!



Contact us

Tel: +86-755-8981 8866 Fax: +86-755-8427 6832

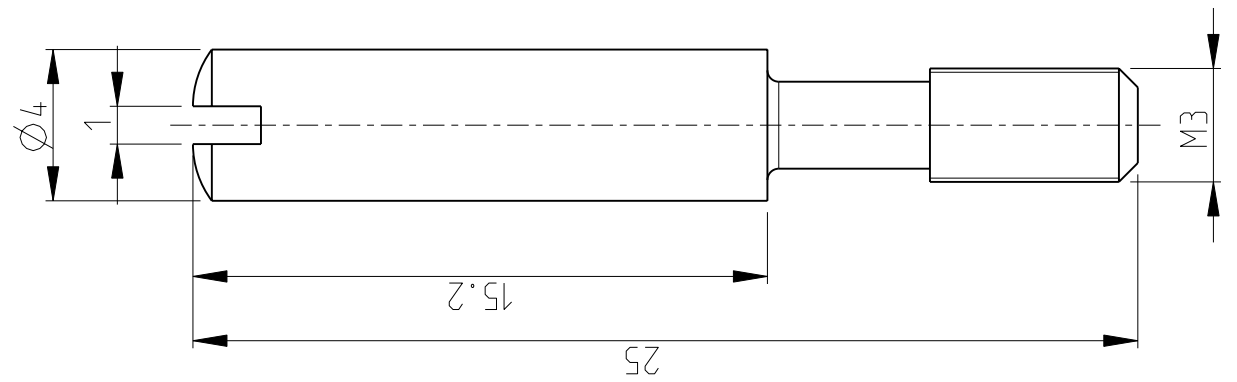
Email & Skype: info@chipsmall.com Web: www.chipsmall.com

Address: A1208, Overseas Decoration Building, #122 Zhenhua RD., Futian, Shenzhen, China



THIS DRAWING IS A CONTROLLED DOCUMENT FOR TYCO ELECTRONICS CORPORATION
IT IS SUBJECT TO CHANGE AND THE CONTROLLING ENGINEERING ORGANIZATION
SHOULD BE CONTACTED FOR THE LATEST REVISION.

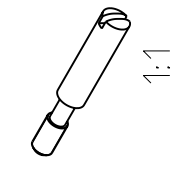
LOC	DIST	P	LTR	DESCRIPTION	DATE	DWN	APVD
A1	-	B1		NOTES ADDED ECR - 02280	25JAN2008	GW	ST



Notes

- 1 PACKAGING: PACKED IN A BAG
QUANTITY: 50 PIECES

PN 1-1
AS SHOWN



DIMS: DIMENSIONS:		MATERIAL		FINISH	
mm		-		-	
TOLERANCES UNLESS OTHERWISE SPECIFIED:		tyco Electronics AMP GmbH 53819 Neunkirchen (Germany)			
0 PLC	±	NAME			
1 PLC	±	GUIDE PIN			
2 PLC	±	F-STI-M3			
3 PLC	±	SIZE		CAGE CODE DRAWING NO	
4 PLC	±	A4 00779		C=1106102	
ANGLES	±1°	RESTRICTED TO			
CUSTOMER DRAWING		SCALE		SHEET 1 OF 1	
		5:1		REV B1	

2006

RELEASED FOR PUBLICATION

THIS DRAWING IS UNPUBLISHED.
© COPYRIGHT 2006 BY TYCO ELECTRONICS CORPORATION. ALL RIGHTS RESERVED.