



Chipsmall Limited consists of a professional team with an average of over 10 year of expertise in the distribution of electronic components. Based in Hongkong, we have already established firm and mutual-benefit business relationships with customers from,Europe,America and south Asia,supplying obsolete and hard-to-find components to meet their specific needs.

With the principle of "Quality Parts,Customers Priority,Honest Operation,and Considerate Service",our business mainly focus on the distribution of electronic components. Line cards we deal with include Microchip,ALPS,ROHM,Xilinx,Pulse,ON,Everlight and Freescale. Main products comprise IC,Modules,Potentiometer,IC Socket,Relay,Connector.Our parts cover such applications as commercial,industrial, and automotives areas.

We are looking forward to setting up business relationship with you and hope to provide you with the best service and solution. Let us make a better world for our industry!



Contact us

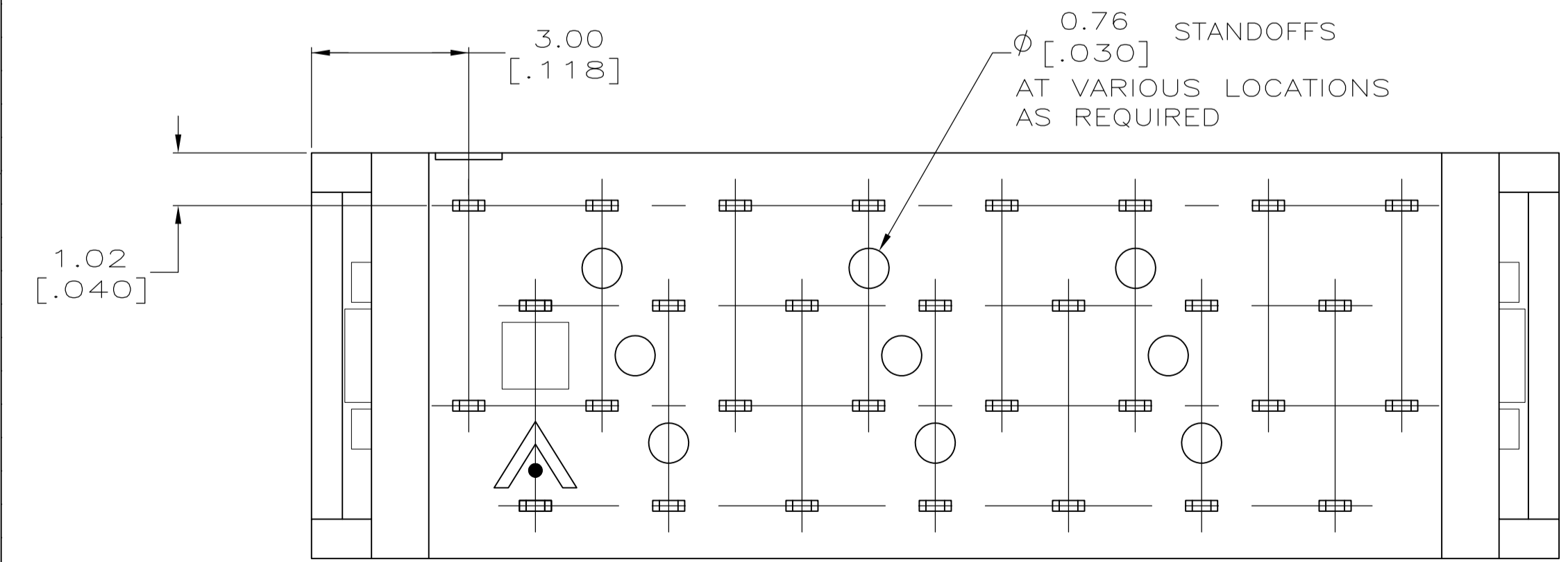
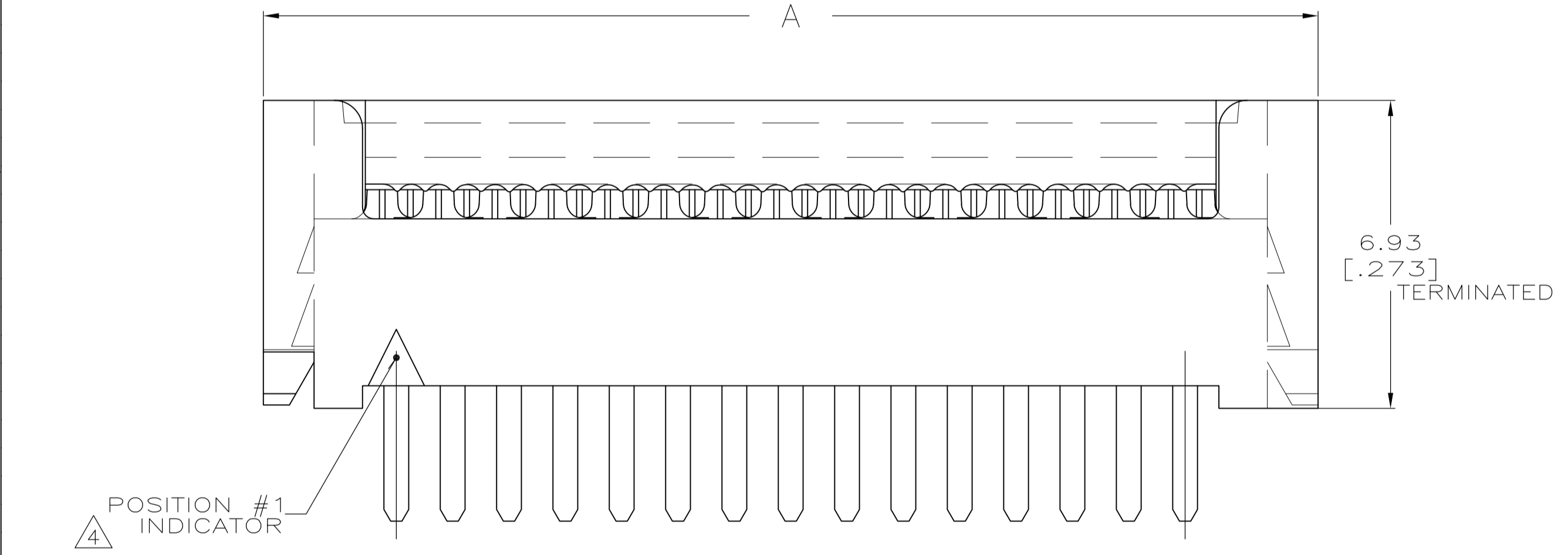
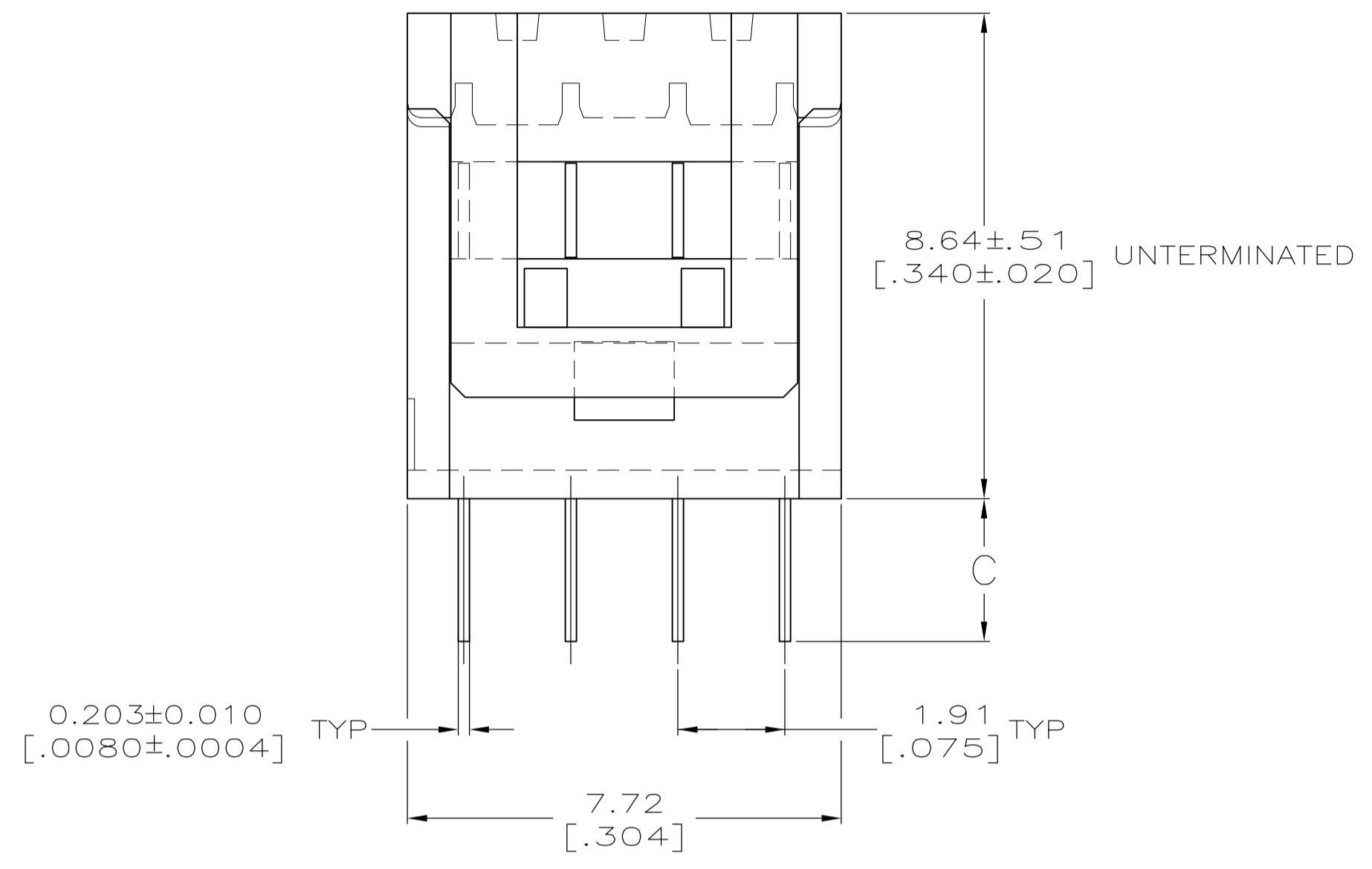
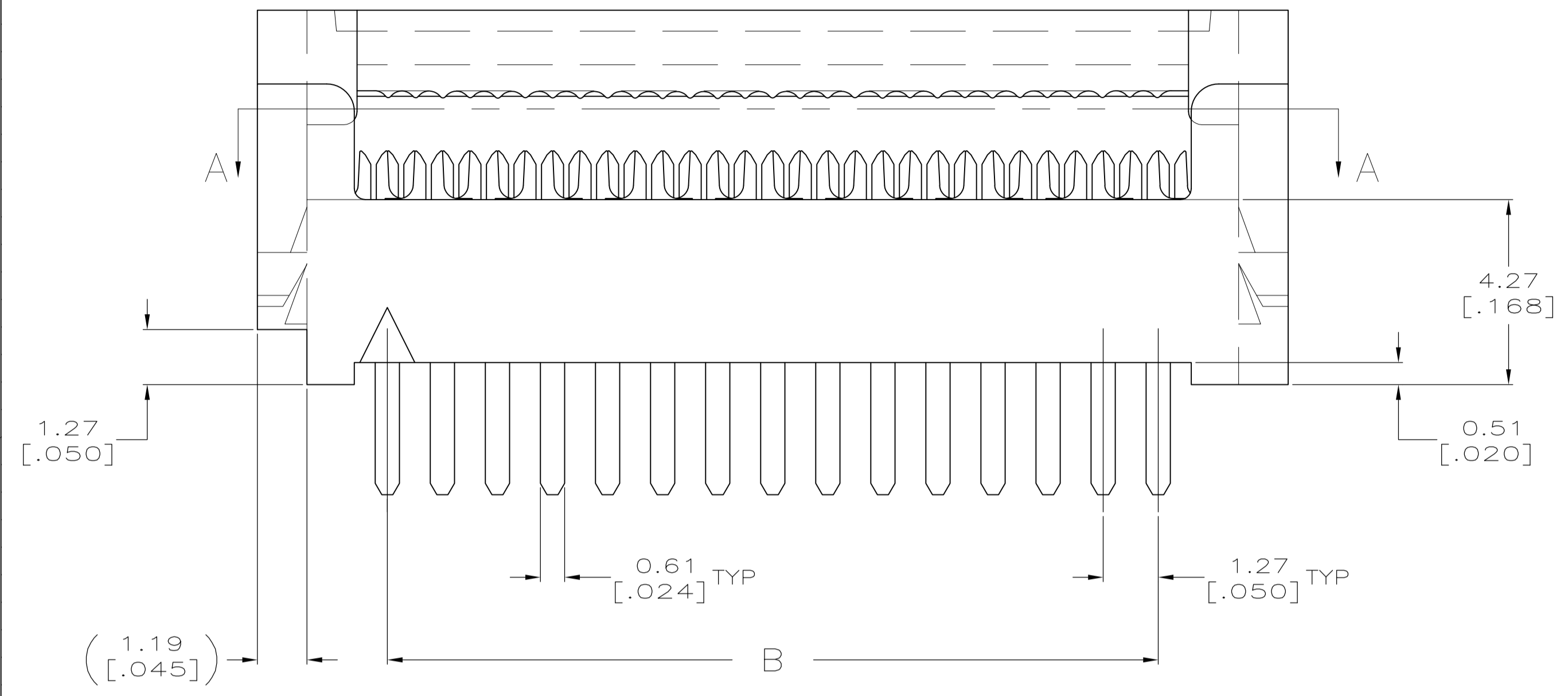
Tel: +86-755-8981 8866 Fax: +86-755-8427 6832

Email & Skype: info@chipsmall.com Web: www.chipsmall.com

Address: A1208, Overseas Decoration Building, #122 Zhenhua RD., Futian, Shenzhen, China



LOC		DIST		REVISIONS			
GP	00	REV	DESCRIPTION	DATE	BY	CHK	APPV
		N2	REVISED PER ECO-06-020813	25/OCT/06	ZR		CR
		N3	REV PER ECO-09-020932	01SEP09	KK		AEG



- △ HOUSING MATERIAL: UL RATED 94V-0 LCP THERMOPLASTIC, COLOR-BLACK.
- COVER MATERIAL: UL RATED 94V-0 POLYESTER MOLDING COMPOUND, COLOR-BLACK.
- △ CONTACT MATERIAL: COPPER ALLOY.
- △ CONTACT FINISH: 0.00254-0.00508 [.000100-.000200] BRIGHT TIN-LEAD OVER 0.00127-0.00254 [.000050-.000100] NICKEL.
- △ POSITION 1 INDICATOR; OMITTED FOR PART NUMBER 2-111595-1.
- △ OBSOLETE.
- △ VOID CORES MAY OR MAY NOT BE PRESENT BETWEEN ANY 2 ROWS OF CONTACTS.
- △ OBSOLETE PARTS: OBSOLETE CIS STREAMLINING PER D.RENAUD/D.SINISI

REV	DESCRIPTION	DATE	BY	CHK	APPV	
#2	3.30 [.130]	49.53 [1.950]	55.52 [2.186]	80	△ 2-111595-2	
△ SUPERCEDED	#2	2.54 [.100]	41.91 [1.650]	47.90 [1.886]	68	2-111595-1 △
△ SUPERCEDED	#2	2.54 [.100]	16.51 [.650]	22.50 [.886]	28	2-111595-0
	#2	2.54 [.100]	41.91 [1.650]	47.90 [1.886]	68	△ 1-111595-9
	-	1.91 [.075]	36.83 [1.450]	42.82 [1.686]	60	△ 1-111595-8
△ SUPERCEDED	#1	2.54 [.100]	27.94 [1.100]	33.93 [1.336]	46	1-111595-7
	#2	2.54 [.100]	62.23 [2.450]	68.22 [2.686]	100	1-111595-6
	#2	2.54 [.100]	49.53 [1.950]	55.52 [2.186]	80	△ 1-111595-5
△ SUPERCEDED	#2	2.54 [.100]	44.45 [1.750]	50.44 [1.986]	72	1-111595-4
△ SUPERCEDED	#2	2.54 [.100]	39.37 [1.550]	45.36 [1.786]	64	1-111595-3
	#2	2.54 [.100]	36.83 [1.450]	42.82 [1.686]	60	△ 1-111595-2
	#1	2.54 [.100]	30.48 [1.200]	36.47 [1.436]	50	1-111595-1
△ SUPERCEDED	#2	2.54 [.100]	26.67 [1.050]	32.66 [1.286]	44	1-111595-0
	#2	2.54 [.100]	24.13 [.950]	30.12 [1.186]	40	111595-9
	#1	2.54 [.100]	20.32 [.800]	26.31 [1.036]	34	△ 111595-8
	#1	2.54 [.100]	17.78 [.700]	23.77 [.936]	30	111595-7
	#1	2.54 [.100]	15.24 [.600]	21.23 [.836]	26	111595-6
△ SUPERCEDED	#2	2.54 [.100]	13.97 [.550]	19.96 [.786]	24	111595-5
	#2	2.54 [.100]	11.43 [.450]	17.42 [.686]	20	△ 111595-4
	#2	2.54 [.100]	8.89 [.350]	14.88 [.586]	16	111595-3
△ SUPERCEDED	#1	2.54 [.100]	7.62 [.300]	13.61 [.536]	14	111595-2
	#1	2.54 [.100]	5.08 [.200]	11.07 [.436]	10	△ 111595-1

THIS DRAWING IS A CONTROLLED DOCUMENT.

DIMENSIONS: mm [INCHES]

TOLERANCES UNLESS OTHERWISE SPECIFIED:

0. PLC	± .
1. PLC	± .
2. PLC	± .13 [.005]
3. PLC	± .
4. PLC	± .
ANGLES	± .

MATERIAL: △ △ △ FINISH: △

THIS DRAWING IS A CONTROLLED DOCUMENT.

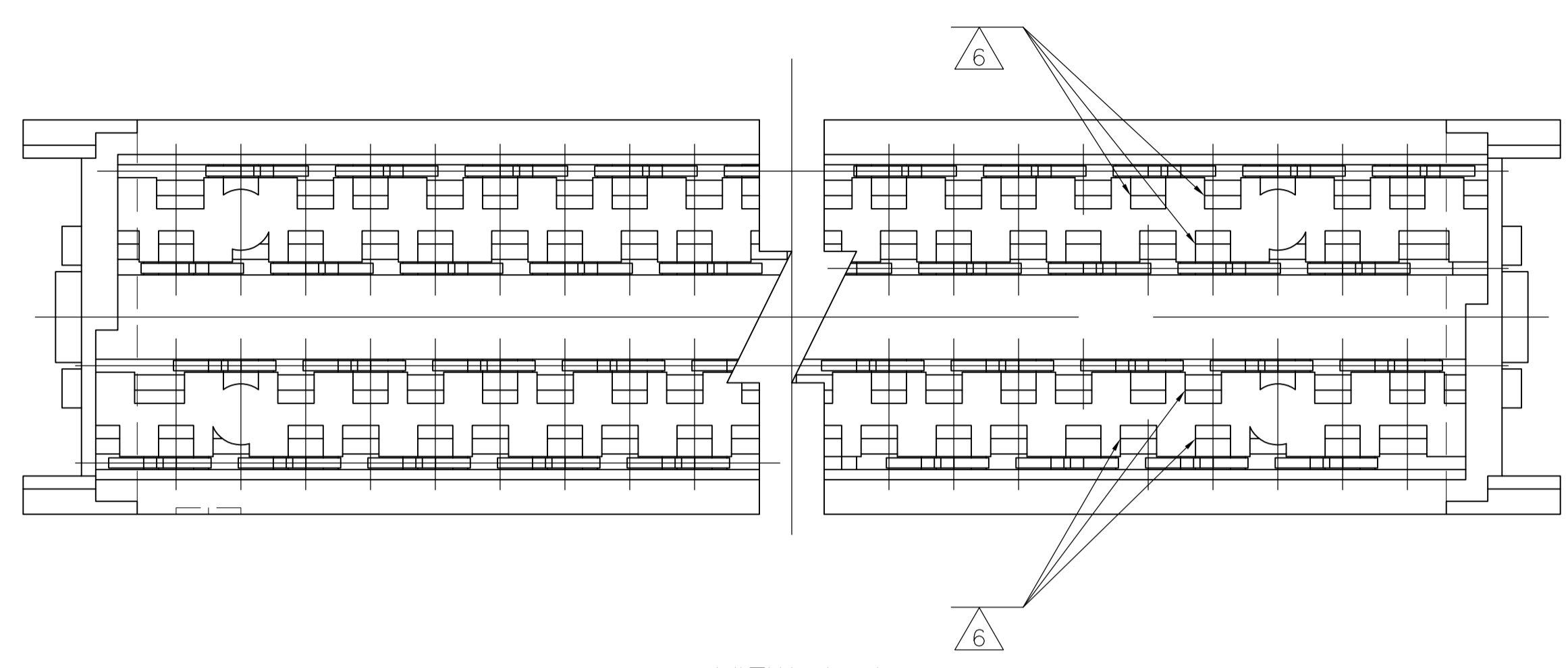
DIN: G. ATTADIA - 11-26-04
 CHK: C. ROHDE 11-26-04
 APPV: M. WALMSLEY 11-26-04

Tyco Electronics
 Tyco Electronics Corporation
 Harrisburg, PA 17105-3608

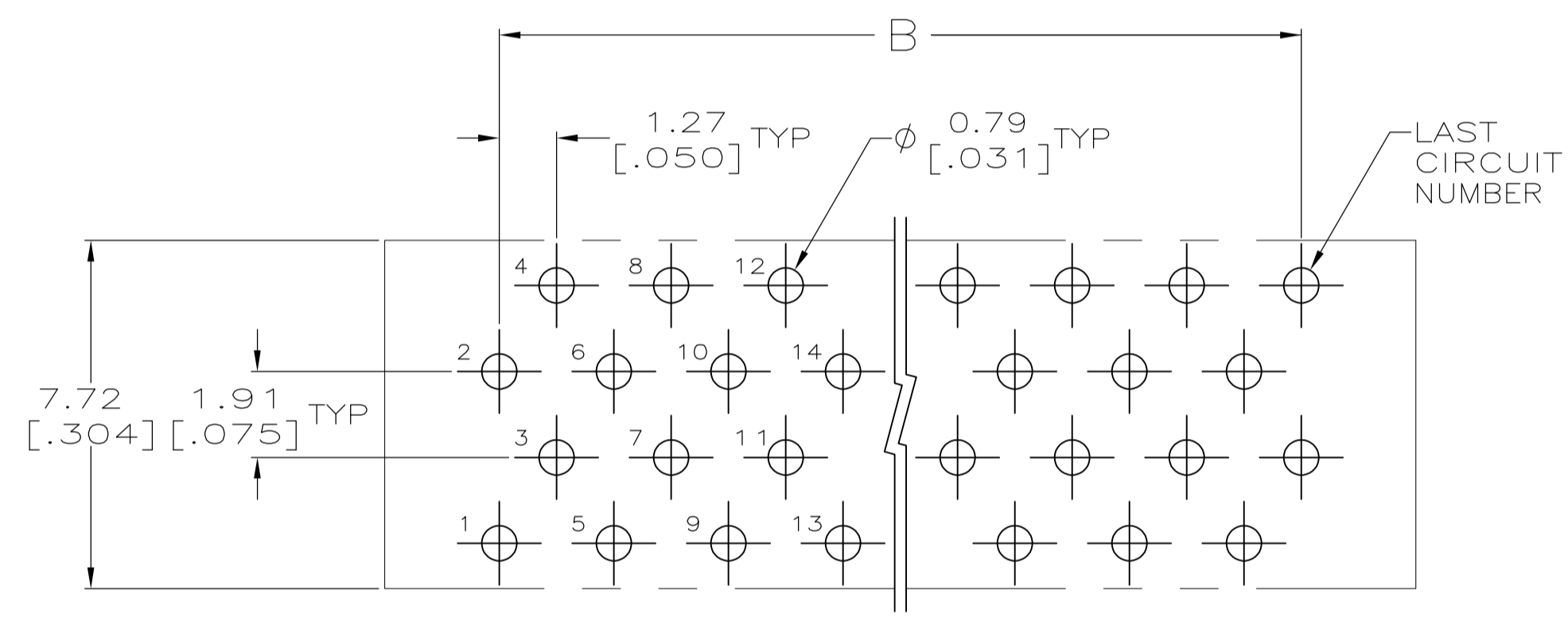
AMPMODU® SYSTEM 50,
 CONNECTOR,
 PADDLEBOARD

SIZE: A1 CAGE CODE: 00779 DRAWING NO: 111595
 WEIGHT: - RESTRICTED TO: -
 CUSTOMER DRAWING SCALE: 10:1 SHEET 1 OF 2 REV: N3

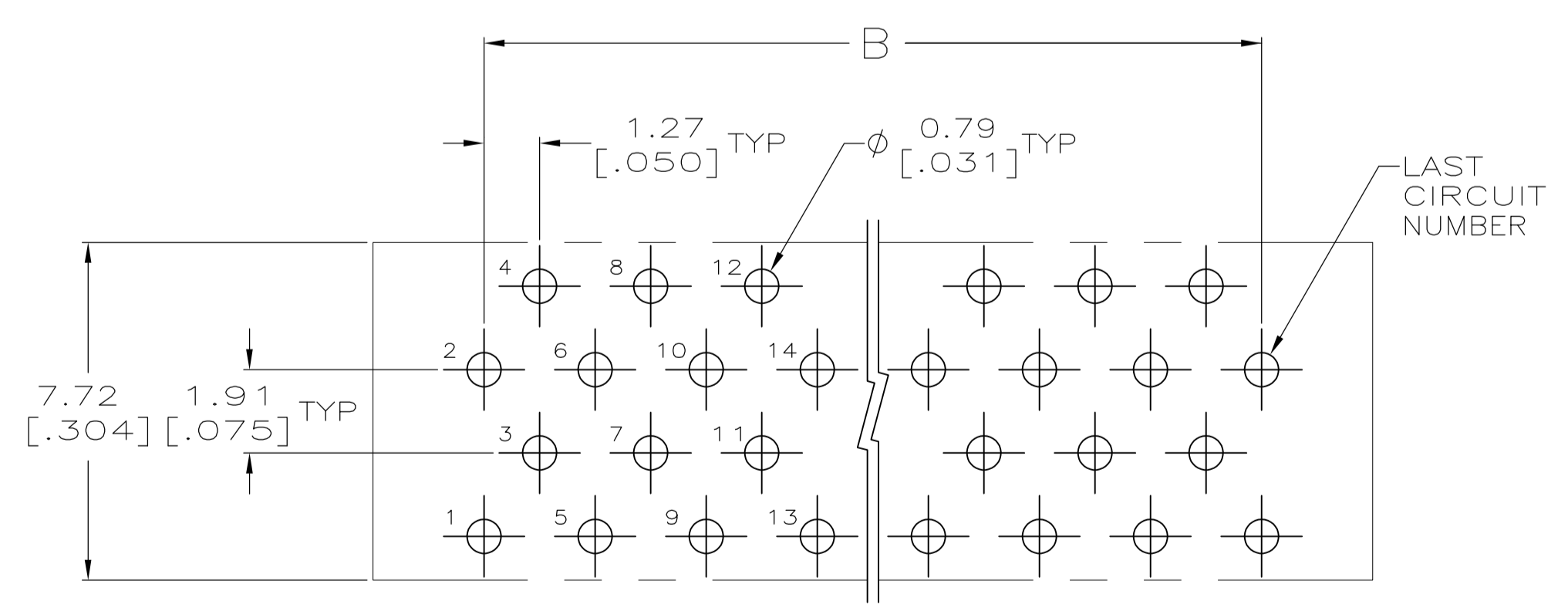
LOC		DIST		REVISIONS			
P	LTR	DESCRIPTION	DATE	DN	APVD		
		SEE SHEET 1					



VIEW A-A
(COVER REMOVED FOR CLARITY)



PRINTED CIRCUIT BOARD HOLE LAYOUT #2



PRINTED CIRCUIT BOARD HOLE LAYOUT #1

THIS DRAWING IS A CONTROLLED DOCUMENT.		DIN G. ATTADIA 26NOV04	Tyco Electronics Corporation Harrisburg, PA 17105-3608	
DIMENSIONS: mm [INCHES]		CHK C. ROHDE 26NOV04	NAME M. WALMSLEY 26NOV04	
TOLERANCES UNLESS OTHERWISE SPECIFIED: 0. PLC ± - 1. PLC ± - 2. PLC ± - 3. PLC ± - 4. PLC ± - ANGLES ± -		PRODUCT SPEC APPLICATION SPEC SIZE CAGE CODE DRAWING NO RESTRICTED TO		
MATERIAL SEE SHEET 1	FINISH SEE SHEET 1	WEIGHT -	A1 00779 C=111595	SCALE 10:1 SHEET 2 OF 2 REV N3
CUSTOMER DRAWING				