



Chipsmall Limited consists of a professional team with an average of over 10 year of expertise in the distribution of electronic components. Based in Hongkong, we have already established firm and mutual-benefit business relationships with customers from,Europe,America and south Asia,supplying obsolete and hard-to-find components to meet their specific needs.

With the principle of “Quality Parts,Customers Priority,Honest Operation,and Considerate Service”,our business mainly focus on the distribution of electronic components. Line cards we deal with include Microchip,ALPS,ROHM,Xilinx,Pulse,ON,Everlight and Freescale. Main products comprise IC,Modules,Potentiometer,IC Socket,Relay,Connector.Our parts cover such applications as commercial,industrial, and automotives areas.

We are looking forward to setting up business relationship with you and hope to provide you with the best service and solution. Let us make a better world for our industry!



## Contact us

Tel: +86-755-8981 8866 Fax: +86-755-8427 6832

Email & Skype: info@chipsmall.com Web: www.chipsmall.com

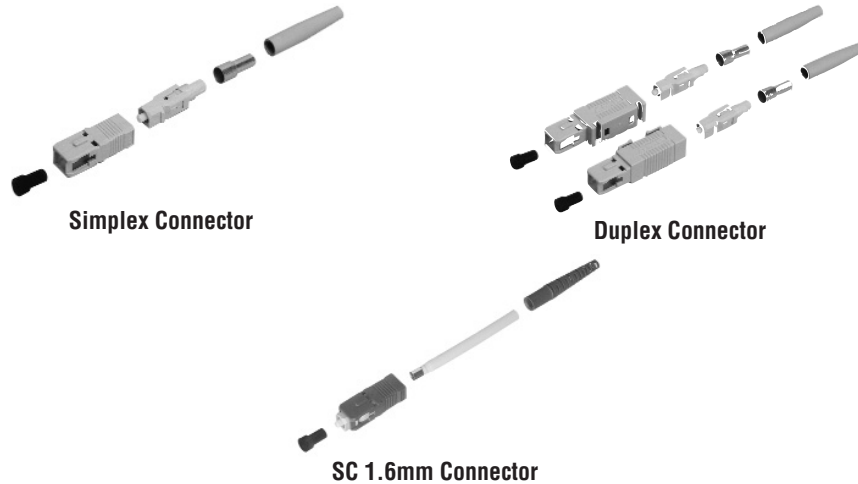
Address: A1208, Overseas Decoration Building, #122 Zhenhua RD., Futian, Shenzhen, China



**SC Connectors**

**Product Facts**

- One-piece connector body:
  - Fastest assembly
  - Field installable
  - Anaerobic epoxy compatible
- Compliant with
  - JIS C-5973
  - Fibre Channel
  - TIA FOCIS-3
- Pre-radiused ferrules
- For 125 µm cladding diameter



**Performance Characteristics**

**Insertion Loss** — <0.2 dB Typical  
**Durability** — 500 Cycles  
 TIA 586B Compliant

**Multimode SC Connector Kits**

Ferrule Type	Crimp Body Material	Jacket Size	Simplex / Duplex	Indiv. Pack w/ Strain Relief	Bulk Pack No Strain Relief	Bulk Pack w/ Strain Relief	Crimp Tool	Instruction Sheet
Ceramic	Polymer	3.0 mm	Simplex	503948-1	503948-3	503948-2	503911-1	408-4159
Ceramic	Polymer	3.0 mm	Duplex	504657-1	504657-3	504657-2	503911-1	408-4211
Polymer	Polymer	3.0 mm	Simplex	1457045-2	1457045-3	—	503911-1	408-4364
Polymer	Polymer	3.0 mm	Duplex	1457044-2	—	—	503911-1	408-4363
Ceramic	Metal	2.4 mm	Simplex	1588715-3	1588715-4	—	1588176-1	408-8674
Ceramic	Metal	2.4 mm	Duplex	1693775-3	1693775-4	—	1588176-1	408-8674
Ceramic	Metal	1.6-2.0 mm	Simplex	1588715-1	1588715-2	—	1588176-1	408-8674
Ceramic	Metal	1.6-2.0 mm	Duplex	1693775-1	1693775-2	—	1588176-1	408-8674
Ceramic	Polymer	900 µm	Simplex	504932-1	504932-3	504932-2	n/a	408-8674
Ceramic	Polymer	900 µm	Duplex	504929-1	—	504929-2	n/a	408-8674

**Performance Characteristics**

**Insertion Loss** — <0.2 dB Typical  
**Return Loss** — <-55 dB Typical  
**Durability** — 200 Cycles

**Singlemode SC Connector Kits - Polymer Crimp Body**

Ferrule Type	Crimp Body Material	Jacket Size	Simplex / Duplex	Indiv. Pack w/ Strain Relief	Bulk Pack No Strain Relief	Bulk Pack w/ Strain Relief	Crimp Tool	Instruction Sheet
Ceramic	Polymer	3.0 mm	Simplex	504646-2	504646-6	504646-4	503911-1	408-4208
Ceramic	Polymer	3.0 mm	Duplex	504655-1	504655-3	504655-2	503911-1	408-4212
Ceramic	Polymer	900µm	Simplex	492123-3	492123-7	492123-4	n/a	408-8674
Ceramic	Polymer	900µm	Duplex	—	—	504655-4	n/a	408-8674

**Performance Characteristics for GR-326 Style Product**

**Insertion Loss** — <0.2 dB Typical  
**Return Loss** — <-59 dB Typical  
**Durability** — 200 Cycles  
 Tested to GR-326  
 Tunable - 6 positions

**GR-326 Style Singlemode SC Connector Kits - Metal Crimp Body**

Ferrule Type	Crimp Body Material	Jacket Size	Simplex / Duplex	Indiv. Pack w/ Strain Relief	Bulk Pack w/ Strain Relief	Crimp Tool	Instruction Sheet
Ceramic	Metal	3.0 mm	Simplex	1457215-4	1457215-2	(1) 492131-1 (1) 58532-1	408-8674
Ceramic	Metal	3.0 mm	Duplex	1754599-2	1754599-4	(1) 492131-1 (1) 58532-1	408-8674
Ceramic	Metal	2.4 mm	Simplex	1588714-5	1588714-6	1588176-1	408-8674
Ceramic	Metal	2.4 mm	Duplex	1693776-5	1693776-6	1588176-1	408-8674
Ceramic	Metal	1.6-2.0 mm	Simplex	1588714-2	1588714-4	1588176-1	408-8674
Ceramic	Metal	1.6-2.0 mm	Duplex	1693776-2	1693776-4	1588176-1	408-8674

**Performance Characteristics**

**Insertion Loss** — <0.2 dB Typical  
**Return Loss** — <-65 dB Typical  
**Durability** — 200 Cycles  
 Tunable - 6 positions

**GR-326 Style Singlemode SC/APC Connector Kits - Metal Crimp Body**

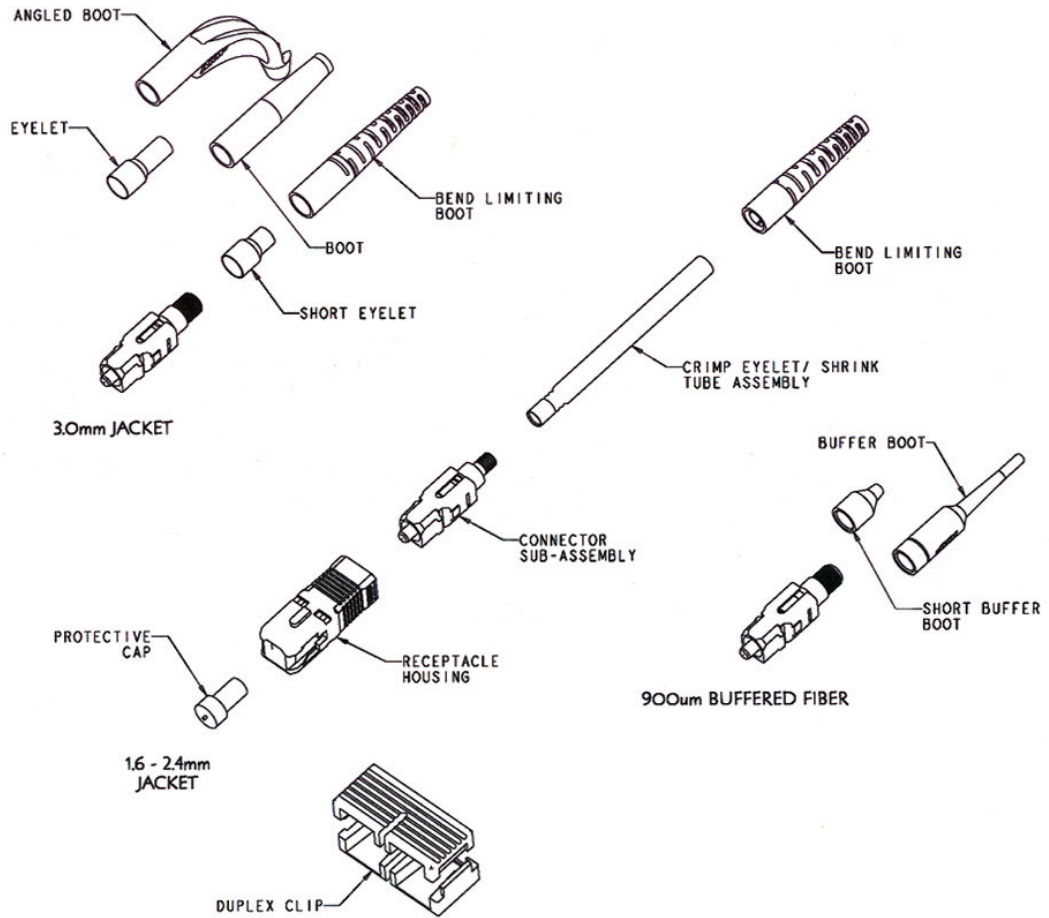
Ferrule Type	Crimp Body Material	Jacket Size	Simplex / Duplex	Bulk Pack w/ Strain Relief	Crimp Tool
Ceramic	Metal	3.0 mm	Simplex	4-1695500-3	(1) 492131-1 (1) 58532-1
Ceramic	Metal	2.4 mm	Simplex	3-1695500-3	1588176-2
Ceramic	Metal	1.6-2.0 mm	Simplex	2-1695500-3	1588176-1
Ceramic	Metal	900µm	Simplex	1-1695500-3	1588176-1

© Copyright 2004 by Tyco Electronics Corporation. All Rights Reserved. Dimensions are in millimeters with inches in brackets unless otherwise specified. Dimensions are shown for reference purposes only.

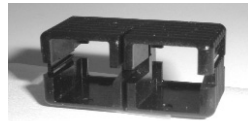


SC Connectors (Continued)

SC Connector Components



SC Duplex Clip (Black):  
Part Number 1348522-1



SC Connector Component Selection Chart (bulk packaged)

Fiber Type	Simplex Connector Sub-Assembly	Duplex Clip*	Cable Size	Crimp Eyelet w/ Heat Shrink	Crimp Eyelet	Strain Relief Part Number**
Singlemode - GR-326 Style	1693917-4	(2) 1348522-1	1.6-2.0 mm 2.4 mm	1374150-1 1588189-1	—	1588153-X 1588153-X
	492058-4	(2) 1348522-1	3.0 mm	—	504973-3	1588491-X
Singlemode - Polymer Crimp Body	503976-3	(2) 1348522-1	2.4 mm	—	503970-6	503971-X
			3.0 mm	—	503970-3	503971-X
			900 μm	—	—	1457493-X (long) 1278309-X (short)
Multimode - Ceramic Ferrule	1693917-5	(2) 1348522-1	1.6-2.0 mm 2.4 mm	1374150-1 1588189-1	—	1588153-X 1588153-X
			3.0 mm	—	503970-3	503971-X
	503975-3	(2) 1348522-1	900 μm	—	—	1457493-X (long) 1278309-X (short)
Multimode - Polymer Ferrule	503922-3	(2) 1348522-1	3.0 mm	—	503970-3	503971-X
			2.4 mm	—	503970-6	503971-X
			900 μm	—	—	1457493-X (long) 1278309-X (short)

\* For Fibre Channel compliant assemblies, use one (1) piece each of pn 503487-Y and 503488-Y. (Dash refers to color - refer to customer drawing for details).  
\*\* Strain relief dash number indicates color -- see page 14 for details.

**SC Connectors (Continued)**



3.0mm - GR-326 Style



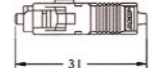
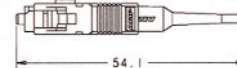
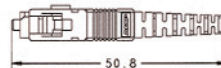
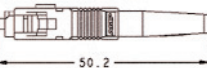
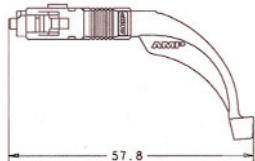
3.0mm Angled



900µm Short



900µm



**SC Strain Reliefs — Jacketed Cable**

Description	Part Number					
	GR-326 Style	Jacket Color				
	Black	Yellow	Red	Beige	Blue	
3.0 mm	No	1-503971-0	503971-7	1-503971-1	503971-1	503971-2
2.4 mm	No	1-503971-2	503971-8	1-503971-3	503971-3	503971-4
3.0 mm	Yes	1588491-3	1588491-4	—	1588491-5	1588491-2
1.6 mm - 2.4 mm	Yes	1588153-3	1588153-4	—	1588153-5	1588153-2

**SC Strain Reliefs — Angled**

Description	Part Number				
	Jacket Color				
	Black	Yellow	Red	Beige	Blue
3.0 mm Simplex	1-1278705-5	1-1278705-7	1-1278705-6	1-1278705-4	1-1278705-3

**SC Strain Reliefs — 900 micron**

Description	Part Number				
	Jacket Color				
	Black	Yellow	Red	Beige	Blue
Long (33mm) 900µm	1457493-3	1457493-5	1457493-4	1457493-9	1457493-1
Short (10 mm) 900 µm	1278309-1	—	1278309-3	—	1278309-2

**SC Low Loss Loopback Connector**

Part Number 503141-1

**Product Facts**

- 62.5/125 Multimode
- Use for Equipment Testing
- 0.6 dB Insertion Loss
- 0.5" Ferrule Centerline

Part Number 503141-2

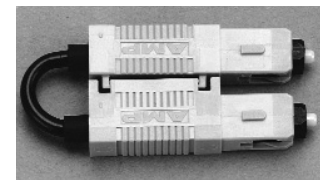
**Product Facts**

- 50/125 Multimode
- Use for Equipment Testing
- 0.8 dB Insertion Loss
- 0.5" Ferrule Centerline

Part Number 504883-1

**Product Facts**

- Singlemode
- Use for Equipment Testing
- 1.5 dB Insertion Loss
- 0.5" Ferrule Centerline

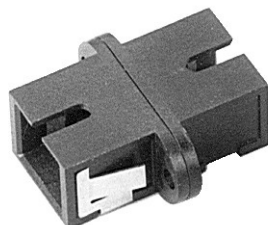




### SC Adapters

#### Product Facts

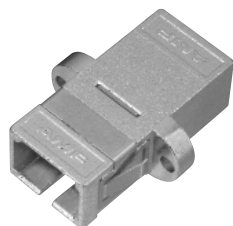
- Suitable for any SC connector
- Available with metal or ceramic alignment sleeves



SC Simplex Adapter - Plastic



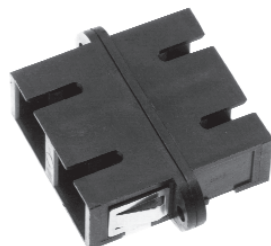
Flange-less SC Simplex Adapter - Plastic



SC Simplex Adapter - Metal



Flange-less SC Simplex Adapter - Metal



SC Duplex Adapter - Plastic

### SC Connectors (Continued)

- Choice of housing colors
- Assortment of hybrid configurations available
- Slide-on Cover Available
- Duplex adapters accept two simplex connectors or one duplex connector
- Mounting screws available P/N 503663-1

#### SC Simplex Adapter - Plastic

Alignment Sleeve Material/Application	Housing Color	Part Numbers	
		Single Pkg.	50 pc. Bulk Pkg.
Metal/MM only	Beige	504614-1	504614-2
Metal	Black	502632-7	1-502632-4
Metal	Blue	502632-8	1-502632-5
Metal	Beige	502632-9	1-502632-6
Ceramic	Black	1-502632-0	1-502632-7
Ceramic	Blue	1-502632-1	1-502632-8
Ceramic	Beige	1-502632-2	1-502632-9
Ceramic/APC	Green	2-106901-6	—

#### Flange-less SC Simplex Adapter - Plastic

Alignment Sleeve Material	Housing Color	Part Numbers
		Single Pkg.
Metal	Black	504632-1
Ceramic	Black	504632-2
Metal	Blue	504632-3
Ceramic	Blue	504632-4

#### SC Simplex Adapter - Metal

Alignment Sleeve Material	Housing Color	Part Numbers	
		Single Pkg.	50 pc. Bulk Pkg.
Metal	Electroless Nickel	1278348-1	1278348-2
Ceramic	Electroless Nickel	1278348-3	1278348-4

#### Flange-less SC Simplex Adapter - Metal

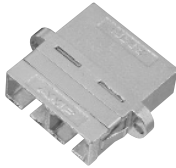
Alignment Sleeve Material	Housing Color	Part Numbers	
		Single Pkg.	50 pc. Bulk Pkg.
Metal	Electroless Nickel	1278348-5	1278348-6
Ceramic	Electroless Nickel	1278348-7	1278348-8

#### SC Duplex Adapter - Plastic

Alignment Sleeve Material/Application	Housing Color	Part Numbers	
		Single Pkg.	50 pc. Bulk Pkg.
Metal/MM only	Black	504640-4	—
Metal/MM only	Beige	504640-1	504640-2
Metal	Black	502776-7	1-502776-3
Metal	Blue	502776-8	1-502776-4
Metal	Beige	502776-9	1-502776-5
Ceramic	Black	1-502776-0	1-502776-6
Ceramic	Blue	1-502776-1	1-502776-7
Ceramic	Beige	1-502776-2	1-502776-8
Ceramic/APC	Green	2-502776-3	—

SC Connectors (Continued)

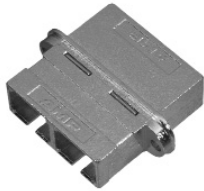
SC Adapters



SC Duplex Adapter

SC Duplex Adapter - Metal

Alignment Sleeve Material	Housing Color	Part Numbers	
		Single Pkg.	50 pc. Bulk Pkg.
Metal	Electroless Nickel	1278049-1	1278049-2
Ceramic	Electroless Nickel	1278049-3	1278049-4



SC Duplex Metal Adapter w/ EMI Shielding

Shielded SC Duplex Adapter - Metal

Alignment Sleeve Material	Housing Color	Part Numbers	
		Single Pkg.	50 pc. Bulk Pkg.
Metal	Electroless Nickel	1374223-1	1374223-2
Ceramic	Electroless Nickel	1374223-3	1374223-4

- Designed to help prevent EMI leak
- Ideal for high-speed applications

SC to ST Hybrid Adapters



SC to ST Simplex Adapter - Plastic

SC to ST Simplex Adapter - Plastic

Alignment Sleeve Material	Housing Color	Part Numbers	
		Single Pkg.	50 pc. Bulk Pkg.
Metal	Black	502780-1	502780-7
Metal	Blue	502780-2	502780-8
Metal	Beige	502780-3	502780-9
Ceramic	Black	502780-4	1-502780-0
Ceramic	Blue	502780-5	1-502780-1



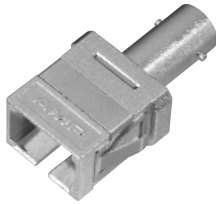
SC to ST Simplex Adapter - Metal

SC to ST Simplex Adapter - Metal

Alignment Sleeve Material	Housing Color	Part Numbers	
		Single Pkg.	50 pc. Bulk Pkg.
Ceramic	Electroless Nickel	1278350-3	1278350-4

**SC Connectors** (Continued)

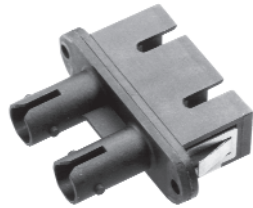
**SC to ST Hybrid Adapters** (Continued)



Flange-less SC to ST Simplex Adapter - Metal

**Flange-less SC to ST Simplex Adapter - Metal**

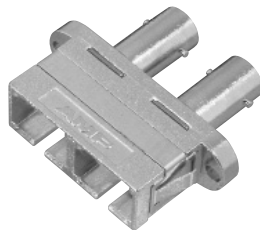
Alignment Sleeve Material	Housing Color	Part Numbers	
		Single Pkg.	50 pc. Bulk Pkg.
Ceramic	Electroless Nickel	1278350-7	1278350-8



SC to ST Duplex Adapter - Plastic

**SC to ST Duplex Adapter - Plastic**

Alignment Sleeve Material	Housing Color	Part Numbers	
		Single Pkg.	50 pc. Bulk Pkg.
Metal (MM Only)	Beige	504663-4	—
Metal	Black	503137-1	—
Metal	Blue	503137-2	—
Metal	Beige	503137-3	503137-9
Ceramic	Black	503137-4	—
Ceramic	Blue	503137-5	1-503137-1
Ceramic	Beige	503137-6	1-503137-2



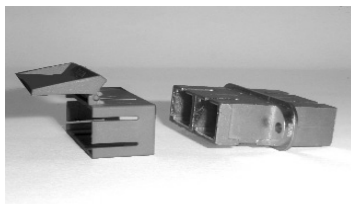
SC to ST Duplex Adapter - Metal

**SC to ST Duplex Adapter - Metal**

Alignment Sleeve Material	Housing Color	Part Numbers	
		Single Pkg.	50 pc. Bulk Pkg.
Metal	Electroless Nickel	1278051-1	1278051-2
Ceramic	Electroless Nickel	1278051-3	1278051-4



**Slide-on Retractable Cover for LC Duplex and SC Simplex or Duplex Applications**



Introducing the new Tyco Electronics' slide-on retractable cover for duplex LC and simplex or duplex SC applications. These retractable doors slip onto the end of existing Tyco Electronics adapters and can be mounted after the adapter has already been installed.

**1693539-1** - for Simplex SC and Duplex LC Adapters (1457567 style)

**1693540-1** - for use on all Tyco Electronics SC Duplex Adapters

**ST Connectors — Epoxy Type**

**Product Facts**

- Epoxy type connector
- Pre-radiused ferrule finish
- Available in bulk packages

**Singlemode**

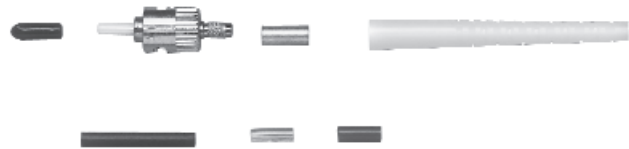
**Ceramic Performance Characteristics**

**Insertion Loss** — 0.3 dB typical  
**Back Reflection** — <-40 dB typical  
**Durability** — 200 cycles

**Ceramic**

**Materials**

**Ferrule Material** — Ceramic  
**Body Material** — Nickel Plated Brass  
**Coupling Nut Material** — Plated Die Cast  
**Nominal Fiber Size** — 126



**Singlemode ST Connector Kits**

Ferrule Type	Body Material	Jacket Size*	Strain Relief Type & Color	Indiv. Pack w/ Strain Relief	Bulk Pack No Strain Relief	Bulk Pack w/ Strain Relief	Crimp Tool	Instruction Sheet
Ceramic	Metal	3.0 mm (900µm, 2.4mm)	Bend Limiting /Yellow	502579-2	—	—	53433-4	408-9645
Ceramic	Metal	3.0 mm (900µm, 2.4mm)	Short/Yellow	502580-2	—	502580-4	58433-4	408-9645
Ceramic	Metal	900µm	Bare Buffer /Yellow	503613-2	503613-4	—	58433-4	408-9645

\* Jack sizes in parentheses can be accommodated with no additional purchases by using build-up tubing included in the kit part numbers listed.

**Ceramic**

**Multimode Ceramic Performance Characteristics**

**Insertion Loss** — 0.3dB typical  
**Durability** — 500 cycles



**Multimode ST Connector Kits - Ceramic Ferrule**

Ferrule Type	Body Material	Coupling Nut Material	Jacket Size*	Strain Relief Type & Color	Indiv. Pack w/ Strain Relief	Bulk Pack No Strain Relief	Bulk Pack w/ Strain Relief	Crimp Tool	Instruction Sheet
Ceramic	Polymer	Polymer	3.0 mm	Short/Black	—	503569-1	503569-2	58433-4	408-9971
Ceramic	Polymer	Polymer	3.0 mm (900µm, 2.4mm)	Short/Black	503571-1	—	—	58433-4	408-9971
Ceramic	Polymer	Polymer	3.0 mm (900µm, 2.0mm, 2.4mm)	Bare Buffer/Black	503571-3	—	—	58433-4	408-9971
Ceramic	Polymer	Metal	3.0 mm	Short/Black	503677-2	503676-1	503677-1	58433-4	408-9971
Ceramic	Polymer	Metal	900µm	Bare Buffer/Black	—	—	503677-3	58433-4	408-9971
Ceramic	Metal	Metal	3.0 mm (900µm, 2.4mm)	Right Angle/Black	502674-1	—	—	58433-4	408-9645
Ceramic	Metal	Metal	3.0 mm	Short/Black	—	492458-3	492458-2	58433-4	408-9645
Ceramic	Metal	Metal	3.0 mm, 900µm	Bare Buffer/Black Bend Limiting/Black	492458-1	—	—	58433-4	408-9645
Ceramic	Metal	Metal	3.0 mm (900µm, 2.4mm)	Bare Buffer/Black	501380-1	—	—	58433-4	408-9645
Ceramic	Metal	Metal	3.0 mm (900µm, 2.4mm)	Short/Blue	1-501380-1	—	501380-9	58433-4	408-9645
Ceramic	Metal	Metal	3.0 mm (900µm, 2.4mm)	Short/Black	1-501380-6	—	—	58433-4	408-9645
Ceramic	Metal	Polymer	3.0 mm	None	—	1374332-2	—	58433-4	408-9645
Ceramic 140µm	Metal	Polymer	3.0 mm	Short/Black	—	—	1374332-1	58433-4	408-9645
Ceramic 140µm	Metal	Metal	3.0 mm (900µm, 2.4mm)	Bend Limiting/Black	501380-6	—	—	58433-4	408-9645

\* Jack sizes in parentheses can be accommodated with no additional purchases by using build-up tubing included in the kit part numbers listed.

© Copyright 2004 by Tyco Electronics Corporation. All Rights Reserved. Dimensions are in millimeters with inches in brackets unless otherwise specified. Dimensions are shown for reference purposes only.





**ST Connectors — Epoxy Type (Continued)**

**Polymer Composite**

**Multimode  
Polymer Composite  
Performance Characteristics**

**Insertion Loss** — 0.3dB Typical

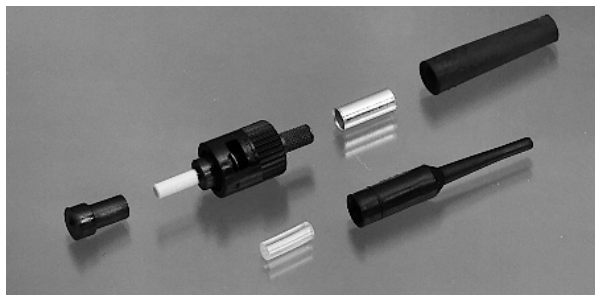
**Durability** — 500 Cycles

**Materials**

**Ferrule** — Composite Polymer

**Body** — Polymer

**Coupling Nut** — Polymer



**Multimode ST Connector Kits - Polymer Ferrule**

Ferrule Type	Body Material	Coupling Nut Material	Jacket Size	Strain Relief Type & Color	Indiv. Pack w/ Strain Relief	Bulk Pack No Strain Relief	Bulk Pack w/ Strain Relief	Crimp Tool	Instruction Sheet
Polymer	Polymer	Polymer	3.0 mm, 900µm	Short/Black Bare Buffer/Black	503415-1	—	—	58433-4	408-9971
Polymer	Polymer	Polymer	3.0 mm	Short/Black	—	503424-1	503424-3	58433-4	408-9971
Polymer	Polymer	Polymer	3.0 mm	Short/Beige	—	—	503424-5	58433-4	408-9971
Polymer	Polymer	Polymer	900µm	Bare Buffer/Black	—	—	503424-7	58433-4	408-9971

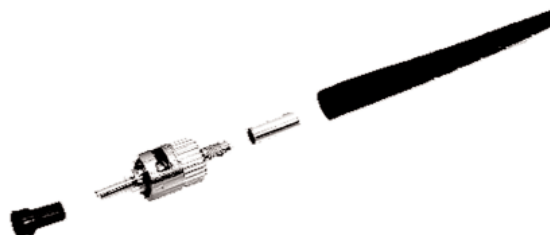
**Stainless Steel**

**Multimode  
Stainless Steel  
Performance Characteristics**

**Insertion Loss** — 0.3dB Typical

**Operating Temp. Range** —  
-30°C to +70°C

**Durability** — 500 cycles



**Multimode ST Connector Kits - Stainless Steel Ferrule**

Ferrule Type	Ferrule Designation	Body Material	Coupling Nut Material	Jacket Size	Strain Relief Type & Color	Indiv Pack w/ Strain Relief	Bulk Pack No Strain Relief	Crimp Tool	Instruction Sheet
Stainless Steel	125	Metal	Metal	3.0 mm	Bend Limiting/ Black	504008-3	5-504008-4	58551-1	408-4151
Stainless Steel	140	Metal	Metal	3.0 mm	Bend Limiting/ Black	504008-7	—	58551-1	408-4151
Stainless Steel	231	Metal	Metal	3.0 mm	Bend Limiting/ Black	1-504008-4	—	58551-1	408-4151
Stainless Steel	240	Metal	Metal	3.0 mm	Bend Limiting/ Black	1-504008-3	—	58551-1	408-4151

**ST Connectors — Epoxy Type (Continued)**

**ST Connector Component Selection Chart (Bulk Packaged)**

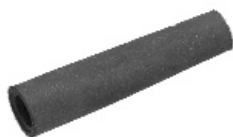
Fiber Type	Connector Sub-Assembly	Cable Size	Crimp Eyelet	Tubing	Strain Relief Part Number*
Singlemode	502578-2	1.6-2.0 mm	501971-3	501275-2	503219-X 502128-X 501457-X
		2.4 mm	501971-3	501275-1	502667-X 502128-X 501457-X
		3.0 mm 900µm	501971-3 501971-3	— 502179-7	502667-X 503628-X
Multimode - Ceramic Ferrule Metal Body, Metal Nut	492458-5	1.6-2.0 mm	501971-3	501275-2	503219-X 502128-X 501457-X
		2.4 mm	501971-3	501275-1	502667-X 502128-X 501457-X
		3.0 mm 900µm	501971-3 501971-3	— 502179-7	502667-X 503628-X
Multimode - Ceramic Ferrule Metal Body, Polymer Nut	501458-8	1.6-2.0 mm	501971-3	501275-2	503219-X 502128-X 501457-X
		2.4 mm	501971-3	501275-1	502667-X 502128-X 501457-X
		3.0 mm 900µm	501971-3 501971-3	— 502179-7	502667-X 503628-X
Multimode - Ceramic Ferrule Polymer Body, Metal Nut	503676-5	1.6-2.0 mm	501971-3	501275-2	503219-X 502128-X 501457-X
		2.4 mm	501971-3	501275-1	502667-X 502128-X 501457-X
		3.0 mm 900µm	501971-3 501971-3	— 502179-7	502667-X 503628-X
Multimode - Ceramic Ferrule Polymer Body, Polymer Nut	503676-4	1.6-2.0 mm	501971-3	501275-2	503219-X 502128-X 501457-X
		2.4 mm	501971-3	501275-1	502667-X 502128-X 501457-X
		3.0 mm 900µm	501971-3 501971-3	— 502179-7	502667-X 503628-X
Multimode - Polymer Ferrule Polymer Body, Polymer Nut	503424-9	1.6-2.0 mm	501971-3	501275-2	503219-X 502128-X 501457-X
		2.4mm	501971-3	501275-1	502667-X 502128-X 501457-X
		3.0 mm 900µm	501971-3 501971-3	— 502179-7	502667-X 503628-X

\* Strain relief dash number indicates color - see page 21 for details.

**ST Connectors — Epoxy Type (Continued)**



Bend Limiting



Short



Right Angle



Bare Buffer

**Strain Relief Bulk packages (100 pcs./package)**

Color	Bend Limiting	Short	Right Angle	Bare Buffer	Short (2.0mm)
Black	502128-9	501457-8	502667-6	503628-2	503219-1
Red	1-502128-1	1-501457-0	502667-9	2-503628-4	503219-3
Blue	1-502128-3	1-501457-2	502667-7	503628-9	503219-5
Beige	1-502128-2	1-502457-2	—	2-503628-9	503219-4

**ST Tooling and Accessories**

**Termination Kit:** Includes all tools and accessories except adhesives

Description	Part Number
Termination kit for all ST epoxy connectors.	503746-1

**Adhesives**

Description	Approx. No. of Connectors	Part Number
Quick Cure Adhesive Tube (3 grams)	100	492508-1
Epoxy - (25) Bipax Pkgs	250	501195-4
Epoxy - (1) Tube	400	502418-1
Epoxy Applicator	—	501473-3

**Crimp Tools**

Description	Hand Tool with Die Set	Hand Tool Only	Die Set Only
Ceramic/Polymer Ferrules	58433-4	58532-1	58424-1
Stainless Steel Ferrules	58551-1	58532-1	58552-1

**Miscellaneous Tools**

Polishing Bushing	Part Number
Metal Bushing, Ceramic & Stainless Steel Ferrules	503337-1
Polymer Bushing-Black, Ceramic & Stainless Steel Ferrules	503304-1
Polymer Bushing-Beige, Polymer Ferrule	503304-2
Curing Sleeve/Pieces	502259-1
Strip Card Kit	501818-1

**Polishing Films:** Package of (10) 8.5 x 11 in. Sheets  
Each package will polish between 60 and 80 connectors

Description	Part Number
5 µm	228433-8
1 µm	228433-7
0.3 µm	228433-5

**ST Connectors — Epoxy Type** (Continued)

**Product Facts**

- Free-hanging or panel mount design

**ST Coupling Receptacles**



Alignment Sleeve Material	Packaging	Part Number
Polymer Composite Multimode	Single	501381-1
	Bulk (1000)	501381-2
Metal Multimode	Single	504021-1
	Bulk (50)	504021-2
Zirconia Ceramic Singlemode	Single	502750-1
	Bulk (50)	502750-2

**ST Polymer Duplex Receptacle**

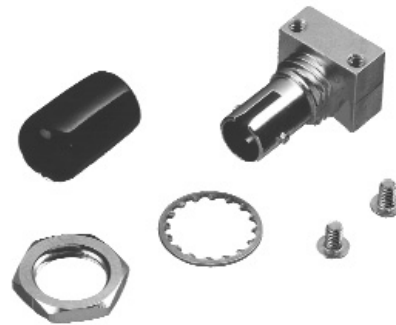


Alignment Sleeve	Color	Part Number
Metal/MM Only	Beige	504662-2
Metal/MM Only	Lt. Almond	504662-1

**ST Active Device Mounts — Multimode**

**Product Facts**

- Designed to accept multimode TO-18, TO-46 and TO-52 active devices
- Nickel plated, die cast zinc
- Mount to PCB or through panel
- Includes positioning ring

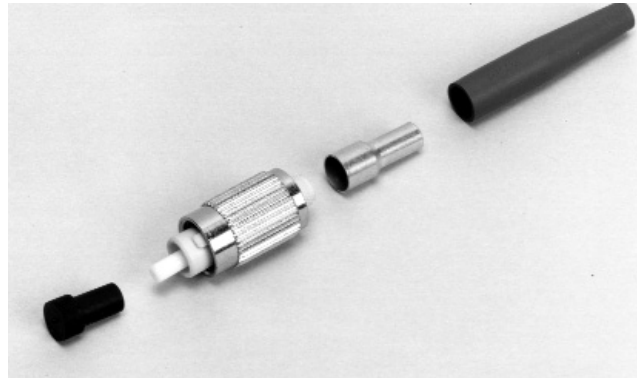


Description	Packaging	Style	Height	Part Number
Standard height	Single	A	.410	501474-1
Low profile	Single	B	.280	502585-2
Low profile	Single	C	.314	504022-2
Low profile	Bulk (50)	C	.314	504022-3

**FC Connectors**

**Product Facts**

- One-piece connector body:
  - Fastest assembly
- Compliant with:
  - JIS C-5970
- Pre-radiused ferrule



**Singlemode FC Connector Kits - Polymer Crimp Body Performance Characteristics**

**Insertion Loss** — <0.2 dB Typical  
**Return Loss** — <-59 dB Typical  
**Durability** — 200 Cycles

**Singlemode FC Connector Kits - Polymer Crimp Body**

Ferrule Type	Crimp Body Material	Jacket Size	Indiv. Pack w/Strain Relief	Bulk Pack w/Strain Relief	Crimp Tool	Instruction Sheet
Ceramic	Polymer	3.0 mm	504649-2	504649-8	503911-1	408-4213
Ceramic	Polymer	900µm	492052-3	492052-4	n/a	408-8674

**GR-326 Style FC Connector Kits - Metal Crimp Body Singlemode Performance Characteristics**

**Insertion Loss** — <0.2 dB Typical  
**Return Loss** — <-59 dB Typical  
**Tested to GR-326**  
**Tuning** - 6 position

**GR-326 Style Singlemode FC Connector Kits - Metal Crimp Body**

Ferrule Type	Crimp Body Material	Jacket Size	Indiv. Pack w/Strain Relief	Bulk Pack w/Strain Relief	Crimp Tool	Instruction Sheet
Ceramic	Metal	3.0 mm	1457216-4	1457216-2	(1) 492131-1 (1) 58532-1	408-8674
Ceramic	Metal	2.4 mm	1754264-5	1754264-6	1588176-1	408-8674
Ceramic	Metal	1.6 - 2.0 mm	1754264-4	1754264-7	1588176-1	408-8674



**FC Boots — Jacketed Cable**

Description	GR-326 Style	Part Number				
		Color				
		Black	Yellow	Red	Beige	Blue
3.0 mm	No	1-503971-0	503971-7	1-503971-1	503971-1	503971-2
2.4 mm	No	1-503971-2	503971-8	1-503971-3	503971-3	503971-4
3.0 mm	Yes	1588491-3	1588491-4	—	1588491-5	1588491-2
1.6 mm - 2.4 mm	Yes	1588153-3	1588153-4	—	1588153-5	1588153-2

**FC Boots — Angled**

Description		Part Number				
		Color				
		Black	Yellow	Red	Beige	Blue
3.0 mm	Simplex	1-1278705-5	1-1278705-7	1-1278705-6	1-1278705-4	1-1278705-3

**FC Boots — 900 micron**

Description	Part Number				
	Color				
	Black	Yellow	Red	Beige	Blue
Long (33mm) 900µm	1457493-3	1457493-5	1457493-4	1457493-9	1457493-1
Short (10 mm) 900 µm	1278309-1	—	1278309-3	—	1278309-2

© Copyright 2004 by Tyco Electronics Corporation. All Rights Reserved. Dimensions are in millimeters with inches in brackets unless otherwise specified. Dimensions are shown for reference purposes only.

For drawings, technical data or samples, contact your Tyco Electronics sales engineer, call 1-800-522-6752, or visit our Website at: <http://www.tycoelectronics.com/fiberoptics>. Specifications subject to change. Consult Tyco Electronics for latest specifications.

### FC Connectors (Continued)

#### FC Connector Component Selection Chart (bulk packaged)

Fiber Type	Simplex Connector Sub-Assembly	Cable Size	Crimp Eyelet w/ Heat Shrink	Crimp Eyelet	Strain Relief Part Number*
Singlemode - GR-326 Style	1374775-3	1.6-2.0 mm 2.4 mm	1374150-1 1588189-1	— —	1588153-X 1588153-X
	492541-4	3.0 mm	—	504973-3	1588491-X
Singlemode - Polymer Crimp Body	504650-3	2.4 mm 3.0 mm	— —	503970-6 503970-3	503971-X 503971-X
		900 μm	—	—	1457493-X (long) 1278309-X (short)
	1374778-2	1.6-2.0 mm 2.4 mm	1374150-1 1588189-1	— —	1588153-X 1588153-X
Multimode - Ceramic Ferrule	503922-3	3.0 mm	—	503970-3	503971-2
		900 μm	—	—	1457493-9 (long) 1278309-1 (short)

\* Strain relief dash number indicates color - see page 23 for details.

### FC Adapters



FC Square Flange Adapter

#### FC Simplex Square Flange Adapter - Metal

Alignment Sleeve Material	Panel Cut-out	Keyway Slot (Nom.)	Part Numbers	
			Single Pkg.	50 pc. Bulk Pkg.
Metal	Square Flange	Std. 2.33 mm	501506-2	501506-4
Ceramic	Square Flange	Std. 2.33 mm	501506-1	501506-3



FC 8mm/9mm Dia. Round

#### FC Simplex 8mm/9mm Dia. Round (D-Hole) Adapter - Metal

Alignment Sleeve Material	Panel Cut-out	Keyway Slot (Nom.)	Part Numbers	
			Single Pkg.	50 pc. Bulk Pkg.
Metal (Copper)	D-Hole	Std. 2.33 mm	504407-1	504407-2
Ceramic	D-Hole	Std. 2.33 mm	504407-3	504407-4
Ceramic/APC	D-Hole	2.05 mm Type R	504407-8	504407-9
Ceramic/APC	D-Hole	Prec. 2.02 mm	504407-7	504407-6



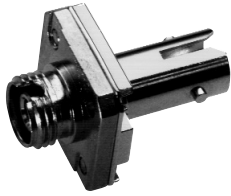
FC 8mm Dia. Round (Double D)

#### FC Simplex 8mm Dia. Round (Double D-Hole) Adapter - Metal

Alignment Sleeve Material	Panel Cut-out	Keyway Slot (Nom.)	Part Numbers
			Single Pkg.
Metal	Double D-Hole	Std. 2.33mm	504013-1

**FC Connectors** (Continued)

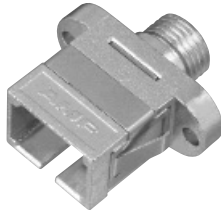
**Hybrid Adapters - SC/FC/ST**



FC to ST Simplex Adapter - Metal

**Hybrid FC to ST Simplex Adapter - Metal**

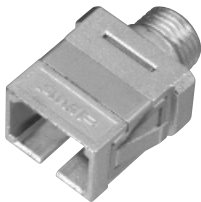
Alignment Sleeve Material	Housing Color	Part Numbers	
		Single Pkg.	
Metal	Electroless Nickel	503640-1	
Ceramic	Electroless Nickel	503640-2	



SC to FC Simplex Adapter - Metal

**SC to FC Simplex Adapter - Metal**

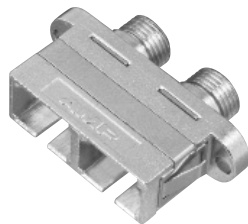
Alignment Sleeve Material	Housing Color	Part Numbers	
		Single Pkg.	50 pc. Bulk Pkg.
Metal	Electroless Nickel	1278349-1	1278349-2
Ceramic	Electroless Nickel	1278349-3	1278349-4



Flange-less SC to FC Simplex Adapter - Metal

**Flange-less Simplex Adapter - Metal**

Alignment Sleeve Material	Housing Color	Part Numbers	
		Single Pkg.	50 pc. Bulk Pkg.
Metal	Electroless Nickel	1278349-5	1278349-6
Ceramic	Electroless Nickel	1278349-7	1278349-8



SC to FC Duplex Adapter - Metal

**SC to FC Duplex Adapter - Metal**

Alignment Sleeve Material	Housing Color	Part Numbers	
		Single Pkg.	50 pc. Bulk Pkg.
Metal	Electroless Nickel	1278050-1	1278050-2
Ceramic	Electroless Nickel	1278050-3	1278050-4