



Chipsmall Limited consists of a professional team with an average of over 10 year of expertise in the distribution of electronic components. Based in Hongkong, we have already established firm and mutual-benefit business relationships with customers from,Europe,America and south Asia,supplying obsolete and hard-to-find components to meet their specific needs.

With the principle of “Quality Parts,Customers Priority,Honest Operation,and Considerate Service”,our business mainly focus on the distribution of electronic components. Line cards we deal with include Microchip,ALPS,ROHM,Xilinx,Pulse,ON,Everlight and Freescale. Main products comprise IC,Modules,Potentiometer,IC Socket,Relay,Connector.Our parts cover such applications as commercial,industrial, and automotives areas.

We are looking forward to setting up business relationship with you and hope to provide you with the best service and solution. Let us make a better world for our industry!



## Contact us

Tel: +86-755-8981 8866 Fax: +86-755-8427 6832

Email & Skype: [info@chipsmall.com](mailto:info@chipsmall.com) Web: [www.chipsmall.com](http://www.chipsmall.com)

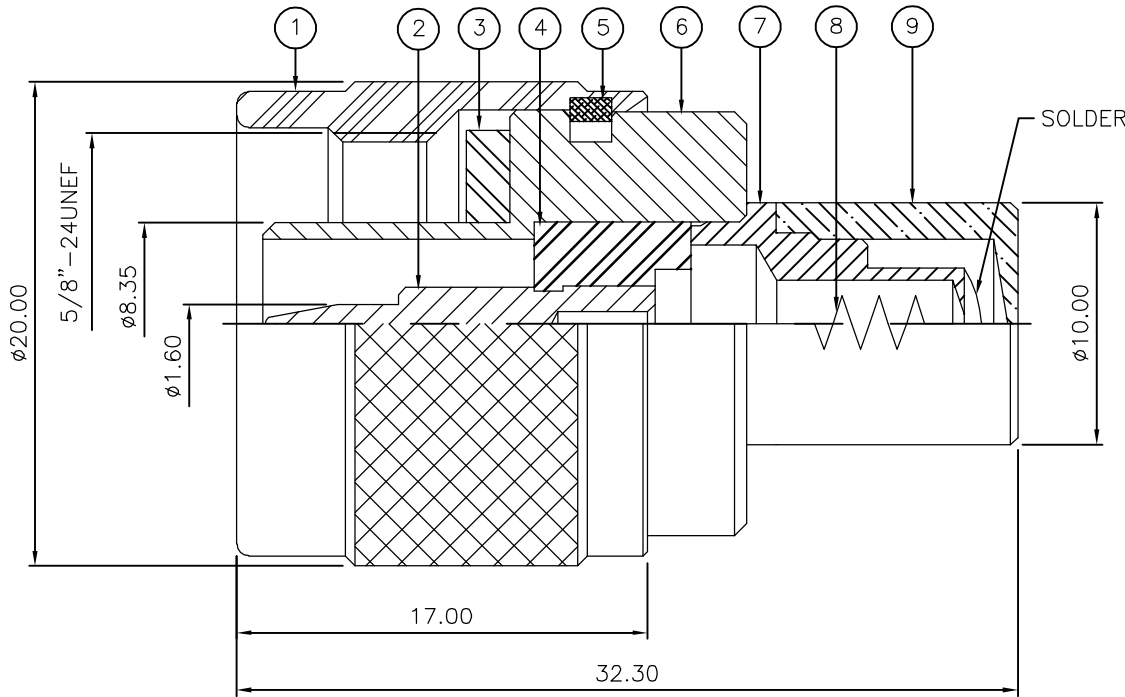
Address: A1208, Overseas Decoration Building, #122 Zhenhua RD., Futian, Shenzhen, China



LOC	DIST	REVISIONS				
		P	LTR	DESCRIPTION	DATE	DWN APVD
E	B		C	ECR-06-012053	23MAY06	JMS FWK

NOTES:

- 1 PACK IN ACCORDANCE WITH AMP SPEC 107-3275
- 2 100 TRAY PACK IN ACCORDANCE WITH AMP SPEC 107-3275
- 3 Au PLATING
- 4 Ni PLATING
- 5 THIS ITEM MUST BE WHITE
- 6 ELECTRICAL CHARACTERISTICS  
FREQUENCY RANGE: DC - 2 GHz  
NOMINAL IMPEDANCE: 50 Ohm  
INSULATION RESISTANCE: 5000 MOhm  
WORKING VOLTAGE: 1000 Volts RMS at Sea Level  
DIELECTRIC WITHSTAND VOLTAGE: 2500 Volts RMS Max  
CONTACT RESISTANCE:  
CENTRE CONTACT: 1.00 mOhm Max  
OUTER CONTACT: 1.00 mOhm Max  
VSWR @ x 2 GHz: 1.20:1  
INSERTION LOSS @ 2 GHz: 0.30 Max
- 7 MECHANICAL CHARATERISTICS  
COUPLING RETENTION FORCE: 445 N Min  
DURABILITY: 500 Cycles Min
- 8 ENVIRONMENTAL CHARACTERISTICS  
OPERATING TEMPERATURE: -65 to +165 DegC
- 9 FOR TECHNICAL DATA REFER TO YOUR LOCAL TYCO ELECTRONICS SALES OFFICE
- 10 ALL DIMENSIONS ARE NOMINAL FOR REFERENCE ONLY UNLESS OTHERWISE STATED



		1	1	BRASS	4	CAP	9
		1	1	1/2W-50 OHM		RESISTOR	8
		1	1	BRASS	4	CHASSIS	7
		1	1	BRASS	4	BODY	6
		1	1	BRASS		CIRCLIP	5
		1	1	PTFE		INSULATION	4
		1	1	SILICONE RUBBER	5	GASKET	3
		1	1	BRASS	3	CONTACT	2
		1	1	BRASS	4	COUPLING NUT	1
		6--0	1--0	MATERIAL		DESCRIPTION	ITEM
		2	1				
QUANTITY PER ASSY				PARTS LIST			

THIS DRAWING IS A CONTROLLED DOCUMENT.		DWN J.SANDWELL 23MAY06	<div><div>tyco</div><div>Electronics</div></div> <div>Tyco Electronics Corporation Bideford EX39 4HE</div>				
DIMENSIONS: mm		CHK S.PARLOW 23MAY06					
		APVD F.WHEELER-KING 23MAY06	NAME TYPE 'N' PLUG TERMINATION 50 OHM				
		PRODUCT SPEC					
		APPLICATION SPEC					
MATERIAL SEE TABLE		WEIGHT -	SIZE A3	CAGE CODE 00779	DRAWING NO C-1337638	RESTRICTED TO -	
CUSTOMER DRAWING				SCALE NTS	SHEET 1 OF 1	REV C	