



Chipsmall Limited consists of a professional team with an average of over 10 year of expertise in the distribution of electronic components. Based in Hongkong, we have already established firm and mutual-benefit business relationships with customers from,Europe,America and south Asia,supplying obsolete and hard-to-find components to meet their specific needs.

With the principle of "Quality Parts,Customers Priority,Honest Operation,and Considerate Service",our business mainly focus on the distribution of electronic components. Line cards we deal with include Microchip,ALPS,ROHM,Xilinx,Pulse,ON,Everlight and Freescale. Main products comprise IC,Modules,Potentiometer,IC Socket,Relay,Connector.Our parts cover such applications as commercial,industrial, and automotives areas.

We are looking forward to setting up business relationship with you and hope to provide you with the best service and solution. Let us make a better world for our industry!



Contact us

Tel: +86-755-8981 8866 Fax: +86-755-8427 6832

Email & Skype: info@chipsmall.com Web: www.chipsmall.com

Address: A1208, Overseas Decoration Building, #122 Zhenhua RD., Futian, Shenzhen, China



LOC		DIST		REVISIONS			
P	LTR	DESCRIPTION	DATE	DN	APVD		
P		REVISED PER ECO-11-005027	11MAR11	RK	HMR		

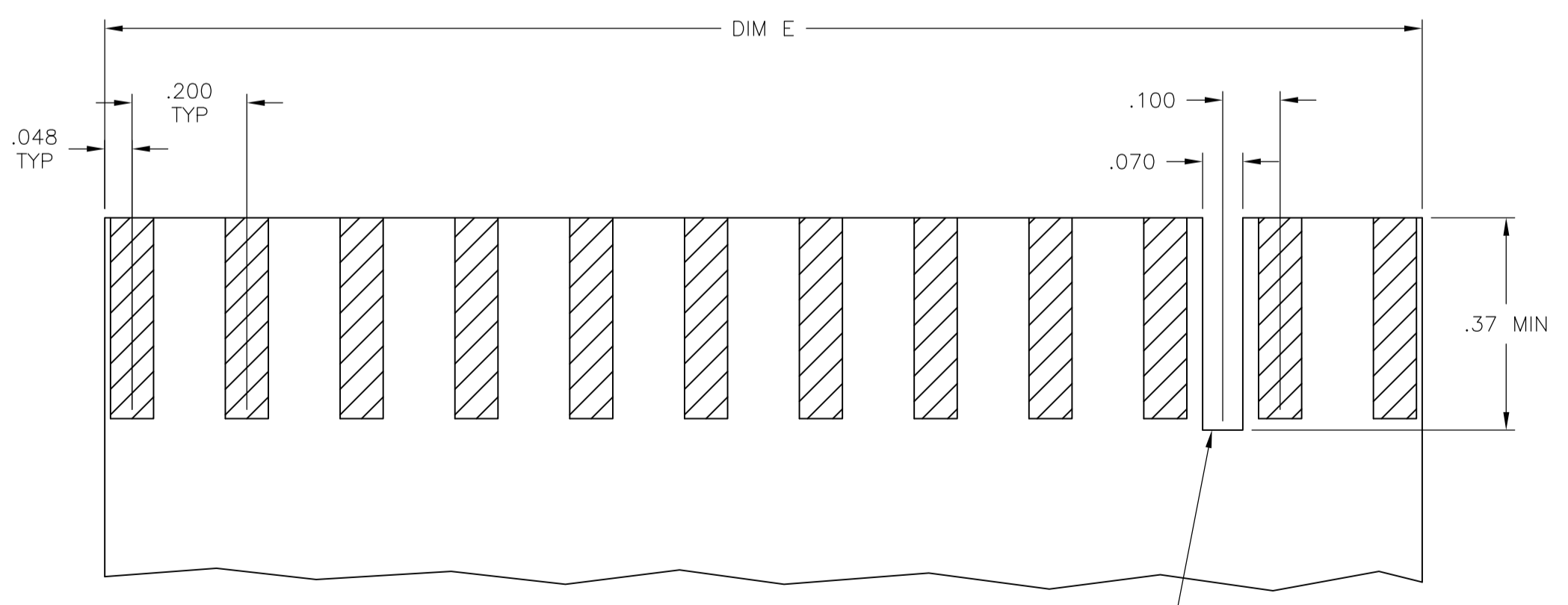
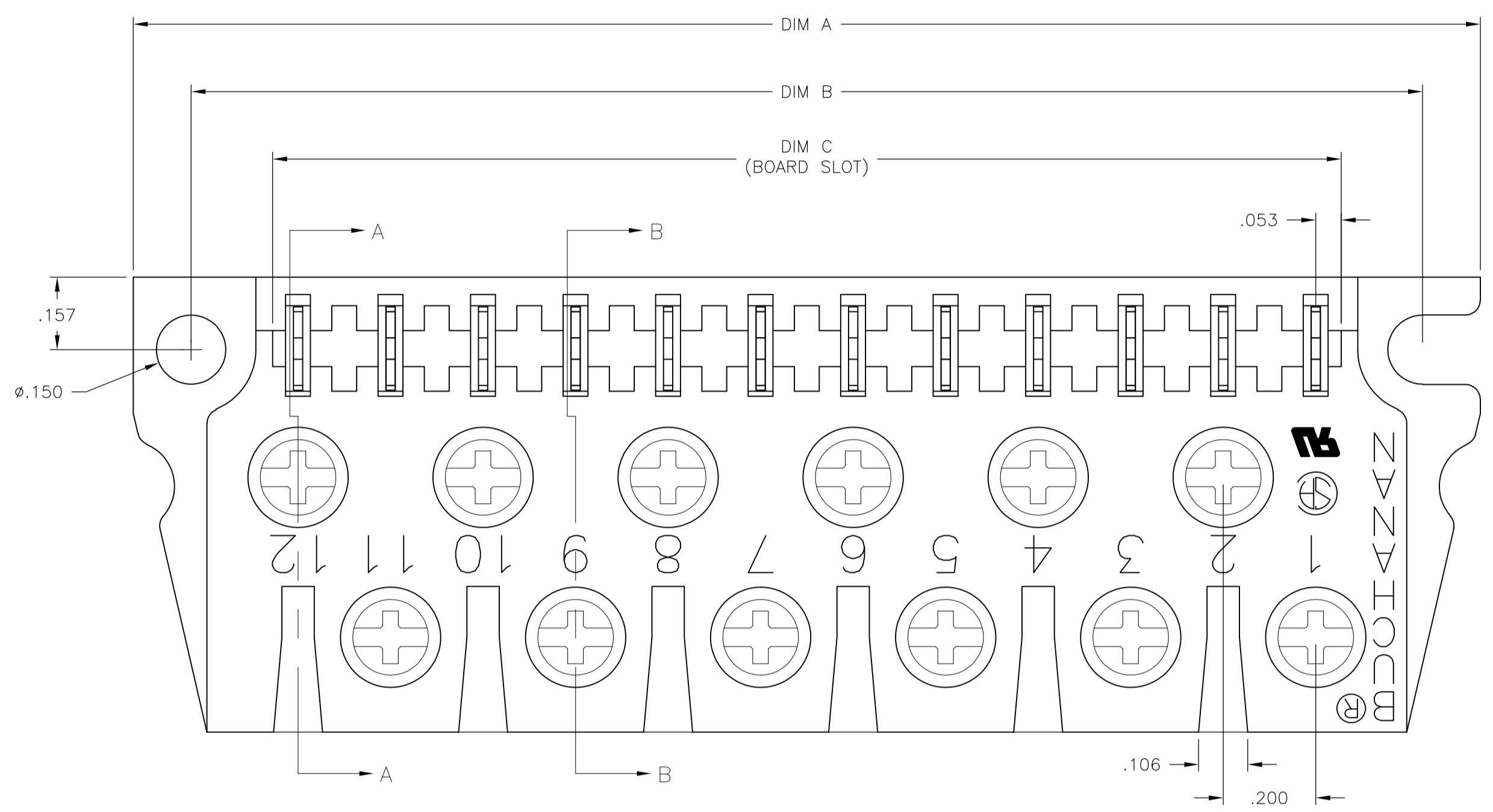
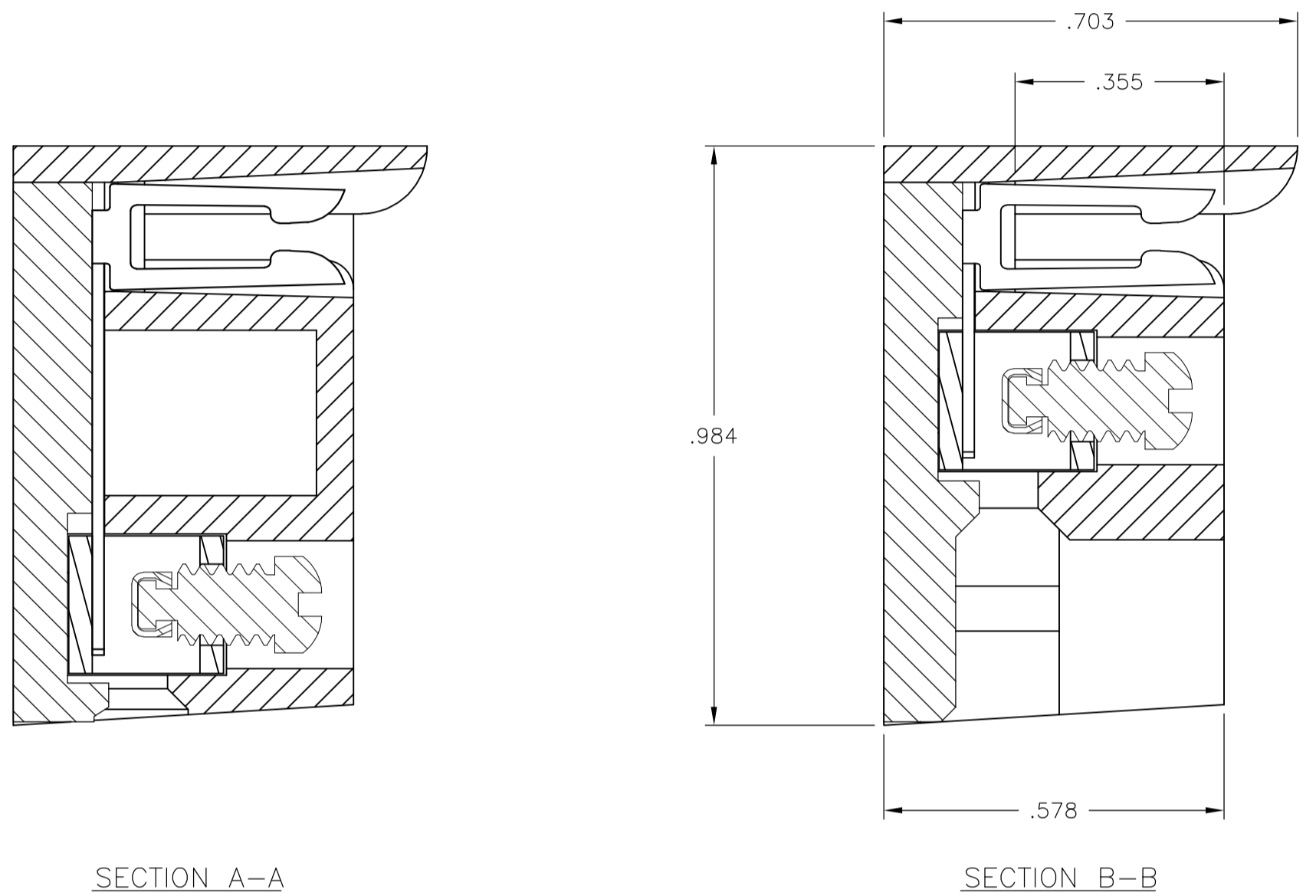
NOTES:

MATERIAL:
 HOUSING: POLYESTER, UL94V-0, WHITE.
 TUBULAR CONTACT: BRASS.
 PC CONTACT: PHOSPHOR BRONZE, BRIGHT TIN PLATE.
 SCREW: 6-32, STEEL, ZINC CHROMATE FINISH.
 CLAMP: BRASS

MECHANICAL:
 PITCH: .200"
 WIRE STRIP LENGTH: .25"
 RECOMMENDED TIGHTENING TORQUE: 5-8 IN-LBS.
 BOARD INSERTION FORCE: 5.6 OZ. PER CKT.
 BOARD SEPARATION FORCE: 1.8 OZ. PER CKT

ELECTRICAL:
 MAX CURRENT: 10A.
 OPERATING VOLTAGE: 250V.
 DIELECTRIC WITHSTAND: 2500V.
 WIRE RANGE: #12 STRANDED ONLY.
 INSULATION RESISTANCE:
 CONTACT RESISTANCE:

ENVIRONMENTAL:
 OPERATING TEMP.: -65°C TO +140°C.



OPTIONAL POLARIZING NOTCH
 LOCATION PER CUSTOMER REQUIREMENT
 USE OPTIONAL POLARIZING KEY CAT. NO. PC17

RECOMMENDED PCB LAYOUT

7.095	7.110	7.470	7.720	36	PCB1A36S	1-1437410-7
5.895	5.910	6.270	6.520	30	PCB1A30S	1-1437410-5
4.695	4.710	5.070	5.320	24	PCB1A24S	1-1437410-3
3.495	3.510	3.870	4.120	18	PCB1A18S	1-1437410-1
2.295	2.310	2.670	2.920	12	PCB1A12S	1437410-9
DIM E	DIM C	DIM B	DIM A	NO. OF POS.	CATALOG NUMBER	PART NUMBER

THIS DRAWING IS A CONTROLLED DOCUMENT.

DIMENSIONS: INCHES	TOLERANCES UNLESS OTHERWISE SPECIFIED:	DIN S SCHLEGEL 6/17/04	TE Connectivity
	0 PLG ± -	CHK S YODER 6/17/04	STE TE Connectivity NAME PCB1A ASSEMBLY TIN PLATE PRODUCT SPEC APPLICATION SPEC SIZE CAGE CODE DRAWING NO. RESTRICTED TO WEIGHT A1 00779 C=1437410-9 CUSTOMER DRAWING SCALE 4:1 SHEET 1 of 1 REV P
	1 PLG ± -	APVD S YODER 6/17/04	
	2 PLG ± .02		
	3 PLG ± .005		
	4 PLG ± -		
	ANGLES ± 1°		