



Chipsmall Limited consists of a professional team with an average of over 10 year of expertise in the distribution of electronic components. Based in Hongkong, we have already established firm and mutual-benefit business relationships with customers from,Europe,America and south Asia,supplying obsolete and hard-to-find components to meet their specific needs.

With the principle of “Quality Parts,Customers Priority,Honest Operation,and Considerate Service”,our business mainly focus on the distribution of electronic components. Line cards we deal with include Microchip,ALPS,ROHM,Xilinx,Pulse,ON,Everlight and Freescale. Main products comprise IC,Modules,Potentiometer,IC Socket,Relay,Connector.Our parts cover such applications as commercial,industrial, and automotives areas.

We are looking forward to setting up business relationship with you and hope to provide you with the best service and solution. Let us make a better world for our industry!



## Contact us

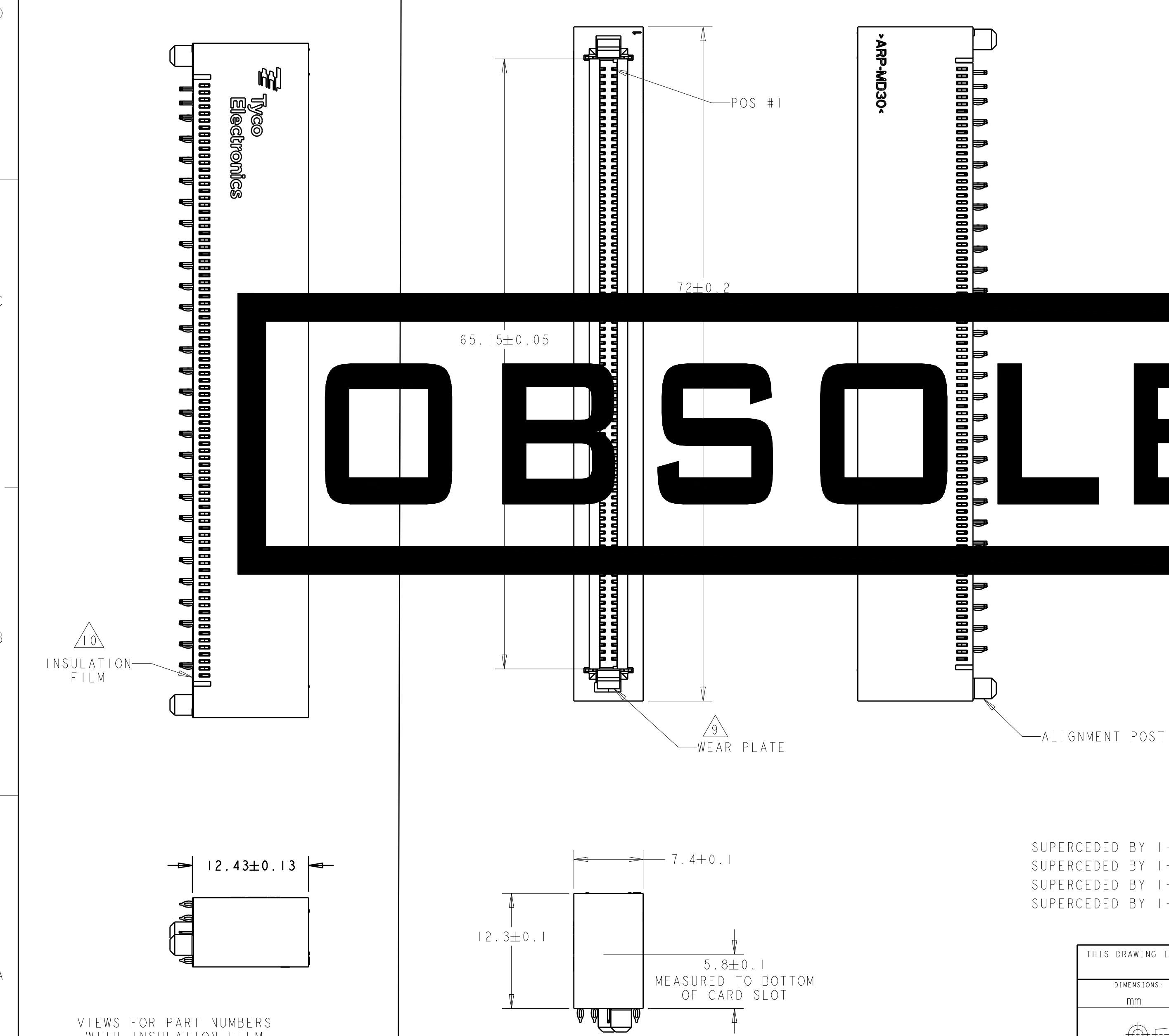
Tel: +86-755-8981 8866 Fax: +86-755-8427 6832

Email & Skype: info@chipsmall.com Web: www.chipsmall.com

Address: A1208, Overseas Decoration Building, #122 Zhenhua RD., Futian, Shenzhen, China



| LOC | DIST | REVISIONS   |                           |            |         |
|-----|------|-------------|---------------------------|------------|---------|
| P   | LTR  | DESCRIPTION | DATE                      | DWN        | APVD    |
| CC  | 00   | C           | REVISED PER ECR-12-009949 | rev.date.1 | F.L F.Y |



1 PCB HOLE DIMENSIONS:  
 DRILLED HOLE = 0.64 ± 0.02 mm  
 FINISHED HOLE = 0.55 mm REF  
 Cu THICKNESS = 25-50 um WITH EITHER  
 PLATING THICKNESS:  
 HASL Sn Pb = 4-10 um OR  
 IMMERSION Sn = MIN 0.5 um OR  
 OSP = 0.2-0.5 um OR  
 IMMERSION Au/Ni = 0.5-1.2 um Au OVER 3.0-7.0 um Ni OR  
 IMMERSION Ag = 0.1 um MIN

2 MATERIAL:  
 HOUSING- LCP, 94V-0 RATED, COLOR- BLACK  
 CONTACTS- COPPER ALLOY  
 WEAR PLATE- STAINLESS STEEL  
 INSULATION FILM- MYLAR

3 FINISH- MATING AREA- 0.76 um MIN GOLD OR  
 0.64 um MIN PALLADIUM-NICKEL OVER 1.27um MIN NICKEL  
 COMPLIANT PIN AREA- 0.5 um BRIGHT TIN OVER 1.27 um

4 CONNECTOR MARKED WITH PART NUMBER AND DATE CODE.

5 DATE OF DESIGN ESTABLISHED BY

6 CONTACT AREA LUBRICATED WITH BELLCORE APPROVED LUBRICANT TECHNICAL REFERENCE GR-127 CORE ISSUE NOVEMBER

7 REFER TO CONNECTIVITY APPLICATION SPECIFICATION 114-13180 FOR SPECIFICATION INFORMATION.

8 FINISH- MATING AREA- 0.76 um MIN GOLD OR 0.64 um MIN PALLADIUM-NICKEL OVER 1.27 um MIN NICKEL COMPLIANT PIN AREA- 0.5 um BRIGHT TIN OVER 1.27 um

9 WEAR PLATE EXTENDS FROM TOP OF CONNECTOR TO BOTTOM OF SLOT AND IS USED TO ELIMINATE WEAR OF THE HOUSING CAUSED BY THE EDGE OF THE PCB CARD.

10 INSULATION FILM USED WHEN ADDITIONAL INSULATION SPACING IS NEEDED BETWEEN PCB TRACES AND CONTACTS.

**OBSOLETE**

| INSULATION FILM | FINISH | WEAR PLATE | ALIGNMENT POSTS | PART NUMBER |
|-----------------|--------|------------|-----------------|-------------|
| YES             | 8      | YES        | YES             | 2-1469820-4 |
| YES             | 8      | YES        | NO              | 2-1469820-3 |
| YES             | 3      | YES        | YES             | 2-1469820-2 |
| YES             | 3      | YES        | NO              | 2-1469820-1 |
| NO              | 8      | YES        | YES             | 1-1469820-4 |
| NO              | 8      | YES        | NO              | 1-1469820-3 |
| NO              | 3      | YES        | YES             | 1-1469820-2 |
| NO              | 3      | YES        | NO              | 1-1469820-1 |
| NO              | 8      | NO         | YES             | 1469820-4   |
| NO              | 8      | NO         | NO              | 1469820-3   |
| NO              | 3      | NO         | YES             | 1469820-2   |
| NO              | 3      | NO         | NO              | 1469820-1   |

SUPERCEDED BY 1-1469820-4  
 SUPERCEDED BY 1-1469820-3  
 SUPERCEDED BY 1-1469820-2  
 SUPERCEDED BY 1-1469820-1

VIEWS FOR PART NUMBERS WITH INSULATION FILM 2-1469820-1 THRU 2-1469820-4

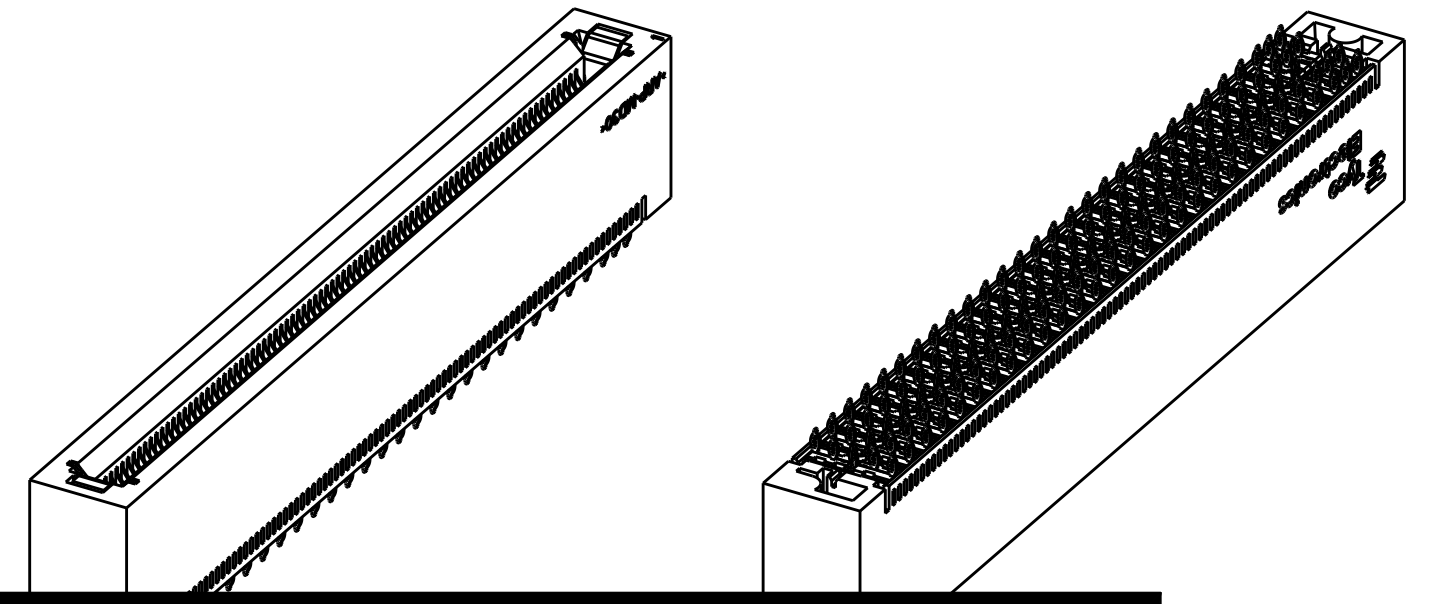
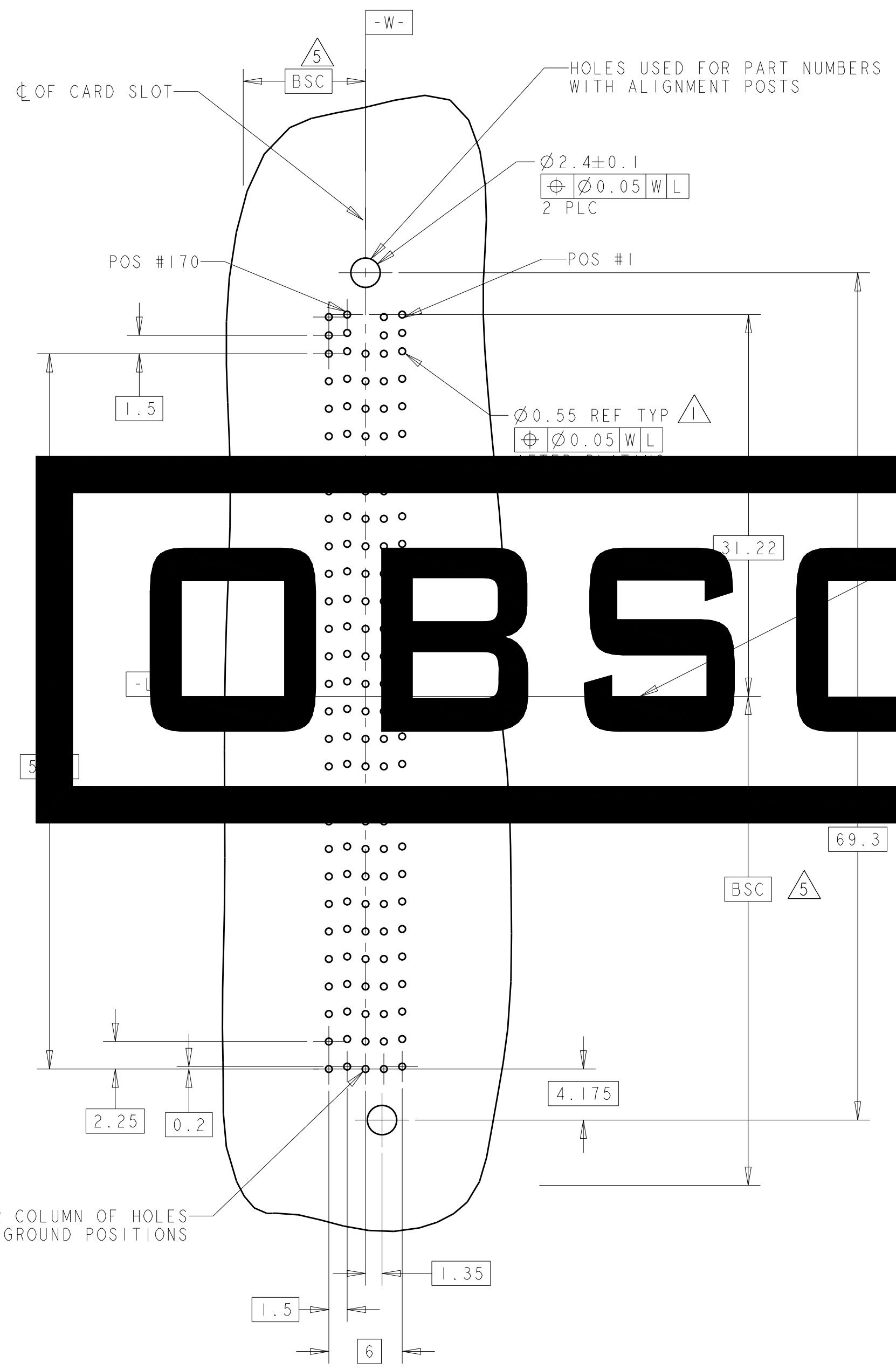
THIS DRAWING IS A CONTROLLED DOCUMENT. DWN: SZCZESNY, 31MAR06, CHK: -

|                |  |                             |   |
|----------------|--|-----------------------------|---|
| DIMENSIONS: mm | TOLERANCES UNLESS OTHERWISE SPECIFIED: | PRODUCT SPEC: 108-2254      | NAME: CARD EDGE CONNECTOR, VERTICAL MICRO TCA |
| 0 PLC ±0.1     | 1 PLC ±0.5                             | APPLICATION SPEC: 114-13180 | SIZE: A2                                      |
| 2 PLC ±0.13    | 3 PLC ±0.013                           | WEIGHT: -                   | CAGE CODE: 00779                              |
| 4 PLC ±0.0001  | ANGLES ±                               | CUSTOMER DRAWING            | DRAWING NO: 1469820                           |
| MATERIAL: -    | FINISH: -                              | SCALE: 3:1                  | SHEET 1 OF 2                                  |

STE TE Connectivity

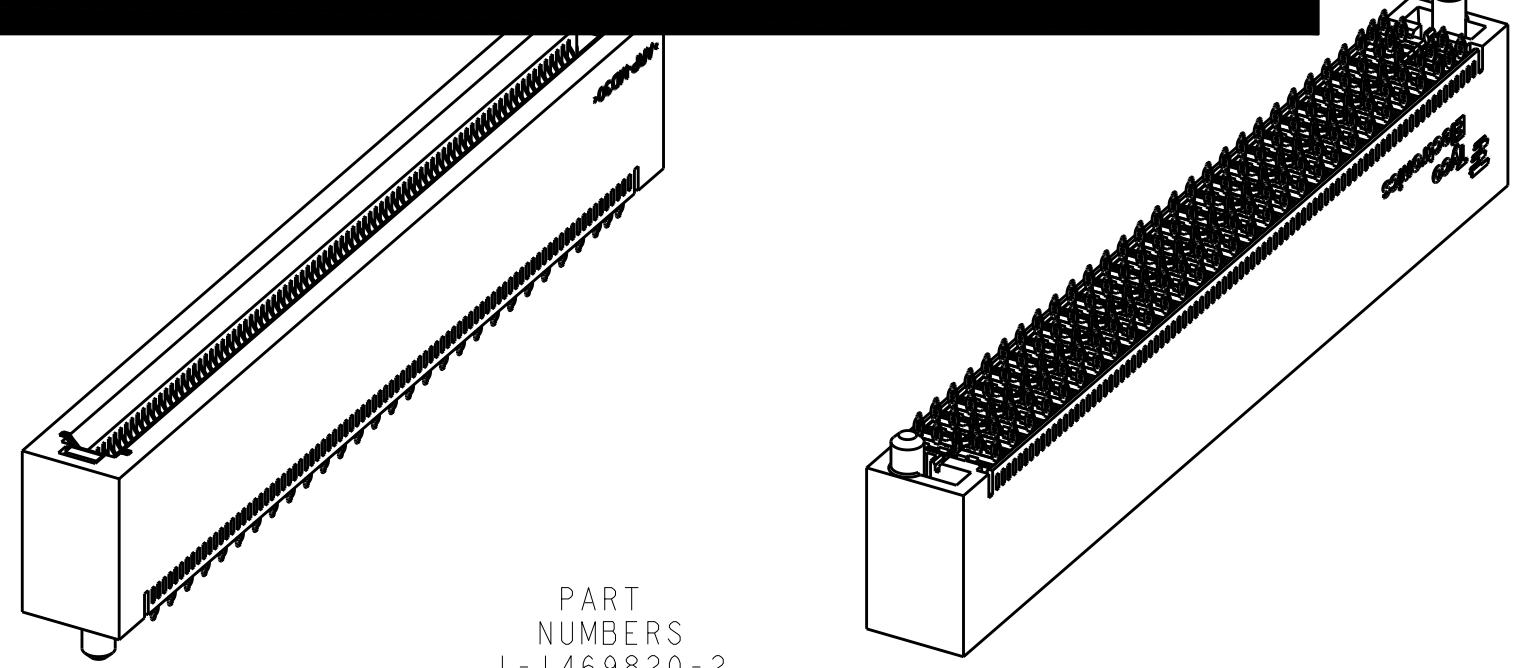
THIS DRAWING IS UNPUBLISHED. RELEASED FOR PUBLICATION 20  
 © COPYRIGHT 20 BY - ALL RIGHTS RESERVED.

| LOC | DIST | REVISIONS |     |             |      |     |      |
|-----|------|-----------|-----|-------------|------|-----|------|
| CC  | 00   | P         | LTR | DESCRIPTION | DATE | DWN | APVD |
|     |      | -         |     | SEE SHEET 1 |      |     |      |



**OBSOLETE**

PART NUMBERS  
 1-1469820-3  
 2-1469820-1  
 2-1469820-3  
 WITHOUT POSTS



PART NUMBERS  
 1-1469820-2  
 1-1469820-4  
 2-1469820-2  
 2-1469820-4  
 WITH POSTS

CENTER COLUMN OF HOLES ARE GROUND POSITIONS

|  |  |   |           |                         |
|--|--|---|-----------|-------------------------|
| THIS DRAWING IS A CONTROLLED DOCUMENT.   |  | DWN<br>D. SZCZESNY  | 31MAR06   | TE Connectivity         |
| DIMENSIONS:<br>mm  |  | CHK<br>-  | APVD<br>- |                         |
| TOLERANCES UNLESS OTHERWISE SPECIFIED:<br>0 PLC ±0.1<br>1 PLC ±0.1<br>2 PLC ±0.13<br>3 PLC ±0.013<br>4 PLC ±0.0001<br>ANGLES ±<br>FINISH |  | PRODUCT SPEC<br>108-2254<br>APPLICATION SPEC<br>114-13180 |           | SIZE<br>A200779         |
| MATERIAL<br>-  |  | WEIGHT<br>-   |           | DRAWING NO<br>C-1469820 |
|  |  | CUSTOMER DRAWING  |           | RESTRICTED TO<br>-      |
|  |  | SCALE 2:1   |           | SHEET 2 OF 2 REV C      |