



Chipsmall Limited consists of a professional team with an average of over 10 year of expertise in the distribution of electronic components. Based in Hongkong, we have already established firm and mutual-benefit business relationships with customers from,Europe,America and south Asia,supplying obsolete and hard-to-find components to meet their specific needs.

With the principle of “Quality Parts,Customers Priority,Honest Operation,and Considerate Service”,our business mainly focus on the distribution of electronic components. Line cards we deal with include Microchip,ALPS,ROHM,Xilinx,Pulse,ON,Everlight and Freescale. Main products comprise IC,Modules,Potentiometer,IC Socket,Relay,Connector.Our parts cover such applications as commercial,industrial, and automotives areas.

We are looking forward to setting up business relationship with you and hope to provide you with the best service and solution. Let us make a better world for our industry!



Contact us

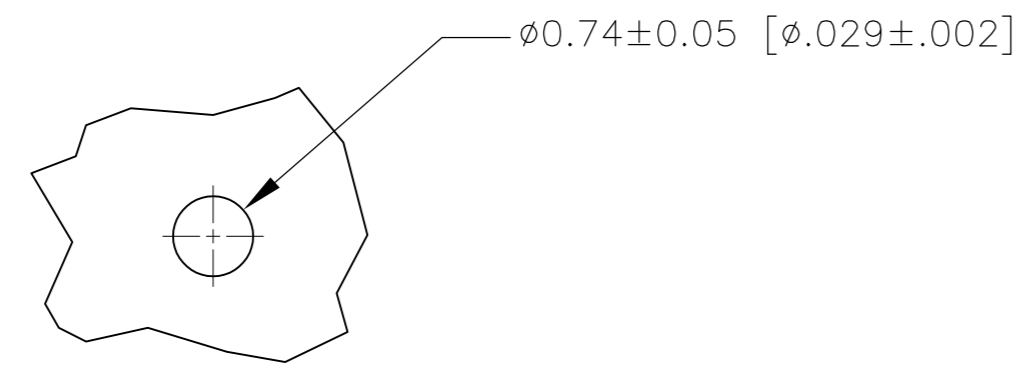
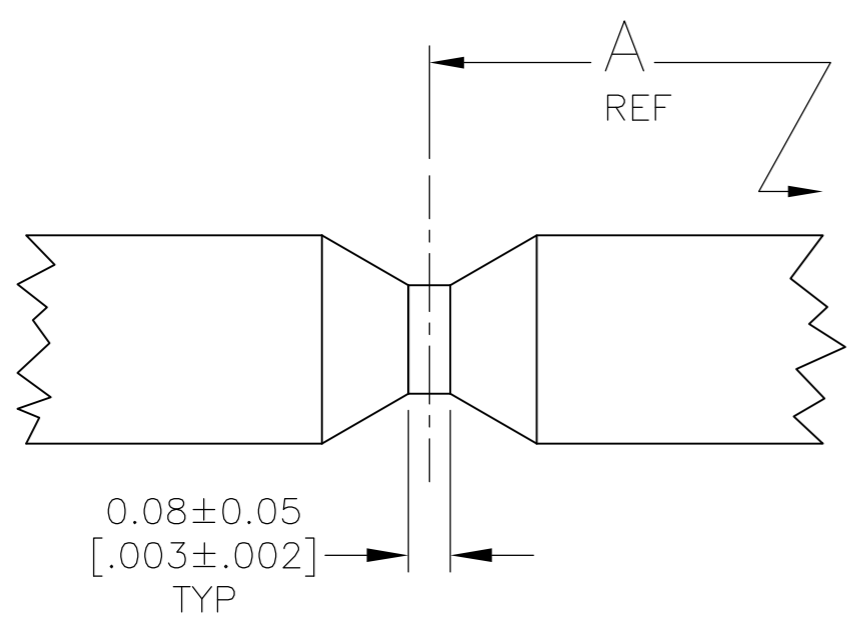
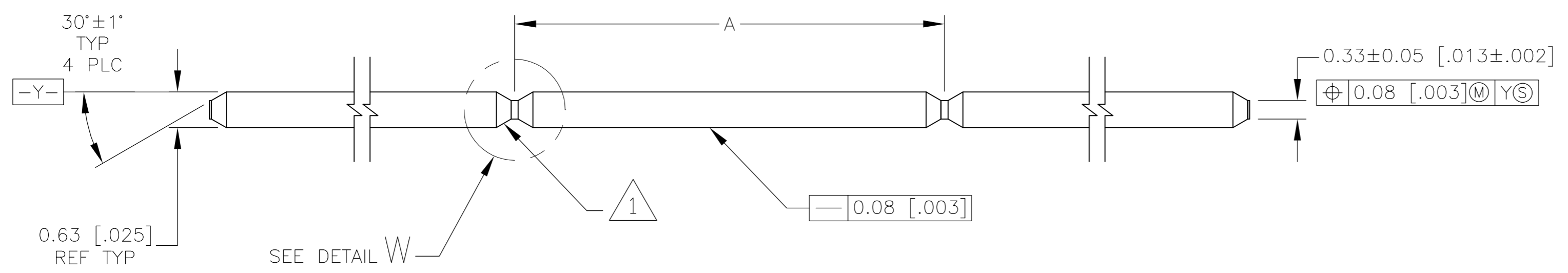
Tel: +86-755-8981 8866 Fax: +86-755-8427 6832

Email & Skype: info@chipsmall.com Web: www.chipsmall.com

Address: A1208, Overseas Decoration Building, #122 Zhenhua RD., Futian, Shenzhen, China



LOC	DIST	REVISIONS			
P	LTR	DESCRIPTION	DATE	DWN	APVD
	B	ECO-07-021031	11SEP07	MB	JG
	B1	REVISED PER ECO-09-020689	22AUG09	KK	AEG



RECOMMENDED PC BOARD
TIN-PLATED HOLE SIZE

- 1 THE NOTCHED EDGES AND POST TIPS WILL NOT BE PLATED.
- 2 0.00038 [.000015] GOLD OVER 0.00127 [.000050] NICKEL.
- 3 MATERIAL: COPPER ALLOY.
- 4 OBSOLETE PARTS: OBSOLETE CIS STREAMLINING PER D.RENAUD/D.SINISI

4 OBSOLETE	Dimension	Part Number
	25.40 [1.000]	6-147334-1
	25.15 [.990]	6-147334-0
	24.89 [.980]	5-147334-9
	24.64 [.970]	5-147334-8
	24.38 [.960]	5-147334-7
	24.13 [.950]	5-147334-6
	23.88 [.940]	5-147334-5
	23.62 [.930]	5-147334-4
	23.37 [.920]	5-147334-3
	23.11 [.910]	5-147334-2
	22.86 [.900]	5-147334-1
	22.61 [.890]	5-147334-0
	22.35 [.880]	4-147334-9
	22.10 [.870]	4-147334-8
	21.84 [.860]	4-147334-7
	21.59 [.850]	4-147334-6
	21.34 [.840]	4-147334-5
	21.08 [.830]	4-147334-4
	20.83 [.820]	4-147334-3
	20.57 [.810]	4-147334-2
	20.32 [.800]	4-147334-1
	20.07 [.790]	4-147334-0
	19.81 [.780]	3-147334-9
	19.56 [.770]	3-147334-8
	19.30 [.760]	3-147334-7
	19.05 [.750]	3-147334-6
	18.80 [.740]	3-147334-5
	18.54 [.730]	3-147334-4
	18.28 [.720]	3-147334-3
	18.03 [.710]	3-147334-2
	17.78 [.700]	3-147334-1
	17.53 [.690]	3-147334-0
	17.27 [.680]	2-147334-9
	17.02 [.670]	2-147334-8
	16.76 [.660]	2-147334-7
	16.51 [.650]	2-147334-6
	16.26 [.640]	2-147334-5
	16.00 [.630]	2-147334-4
	15.75 [.620]	2-147334-3
	15.49 [.610]	2-147334-2
	15.24 [.600]	2-147334-1
	14.99 [.590]	2-147334-0
	14.73 [.580]	1-147334-9
	14.48 [.570]	1-147334-8
	14.22 [.560]	1-147334-7
	13.97 [.550]	1-147334-6
	13.72 [.540]	1-147334-5
	13.46 [.530]	1-147334-4
	13.21 [.520]	1-147334-3
	12.95 [.510]	1-147334-2
	12.70 [.500]	1-147334-1
	12.45 [.490]	1-147334-0
	12.19 [.480]	147334-9
	11.94 [.470]	147334-8
	11.68 [.460]	147334-7
	11.43 [.450]	147334-6
	11.18 [.440]	147334-5
	10.92 [.430]	147334-4
	10.67 [.420]	147334-3
	10.41 [.410]	147334-2
	10.16 [.400]	147334-1

THIS DRAWING IS A CONTROLLED DOCUMENT.		DWN B. HAYMAKER 06MAR00	Tyco Electronics Corporation Harrisburg, PA 17105-3608	
DIMENSIONS: INCHES		CHK J. GESFORD 06MAR00	NAME 0.64 [.025] SQ CONTINUOUS POST	
TOLERANCES UNLESS OTHERWISE SPECIFIED:		APVD J. GESFORD 06MAR00	PRODUCT SPEC -	
0 PLC ± -		APPLICATION SPEC 114-13011		
1 PLC ± -		SIZE A2		
2 PLC ± -		CAGE CODE 00779		
3 PLC ± 0.13[.005]		DRAWING NO 147334		
4 PLC ± -		RESTRICTED TO -		
ANGLES ± -		WEIGHT -		
FINISH		SCALE 15:1		
3		SHEET 1 of 1		
2		REV B1		
CUSTOMER DRAWING		SCALE 15:1 SHEET 1 of 1 REV B1		