



Chipsmall Limited consists of a professional team with an average of over 10 year of expertise in the distribution of electronic components. Based in Hongkong, we have already established firm and mutual-benefit business relationships with customers from,Europe,America and south Asia,supplying obsolete and hard-to-find components to meet their specific needs.

With the principle of “Quality Parts,Customers Priority,Honest Operation,and Considerate Service”,our business mainly focus on the distribution of electronic components. Line cards we deal with include Microchip,ALPS,ROHM,Xilinx,Pulse,ON,Everlight and Freescale. Main products comprise IC,Modules,Potentiometer,IC Socket,Relay,Connector.Our parts cover such applications as commercial,industrial, and automotives areas.

We are looking forward to setting up business relationship with you and hope to provide you with the best service and solution. Let us make a better world for our industry!



Contact us

Tel: +86-755-8981 8866 Fax: +86-755-8427 6832

Email & Skype: info@chipsmall.com Web: www.chipsmall.com

Address: A1208, Overseas Decoration Building, #122 Zhenhua RD., Futian, Shenzhen, China



4

3

2

1

THIS DRAWING IS UNPUBLISHED.

RELEASED FOR PUBLICATION

© COPYRIGHT 2002

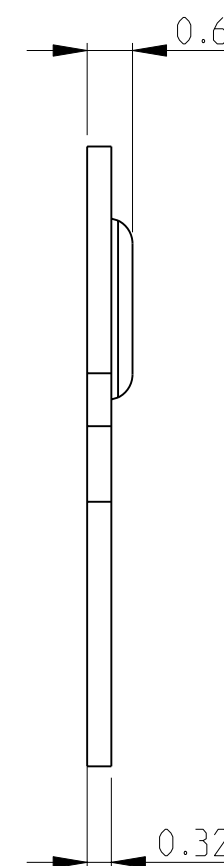
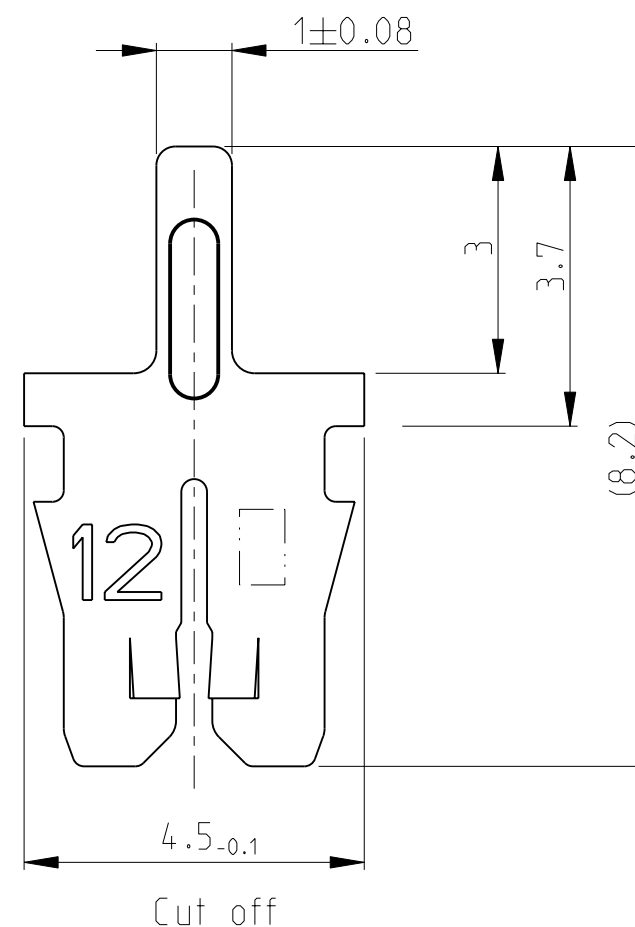
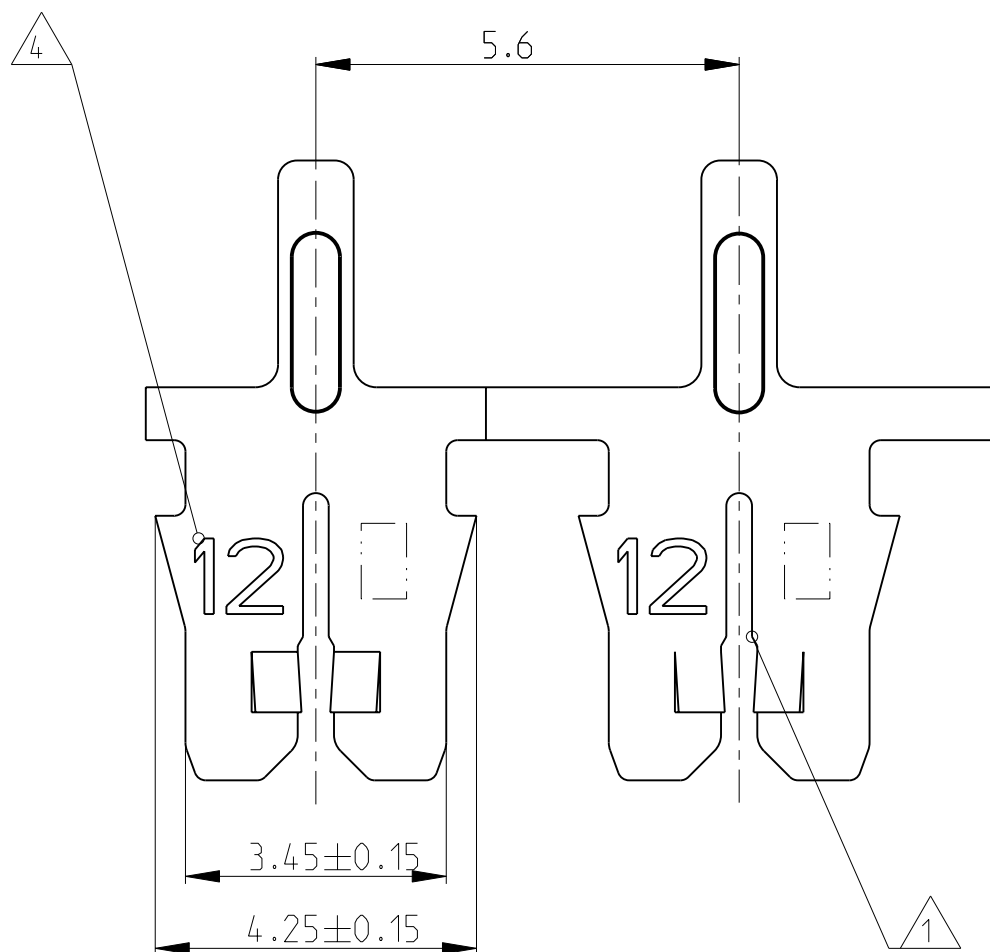
ALL RIGHTS RESERVED.


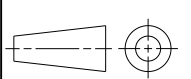
LOC
IR

DIST
-

REVISIONS

P	LTR	DESCRIPTION	DATE	DWN	APVD
	A1	Text hinzu	29JUL2003	Ba.	PL.
	A2	RELEASED TO GENERAL SALES	18JUL2011	PKS	RRP



THIS DRAWING IS A CONTROLLED DOCUMENT.		DWN M. Neitzel	08JAN2002	 TE Connectivity	
DIMENSIONS: mm		CHK H. Ploesser	-		
TOLERANCES UNLESS OTHERWISE SPECIFIED:		APVD -	-	NAME MAG-MATE Kontakt mit Loetpin Baugroesse .300 mod.	
		PRODUCT SPEC -	-	SIZE A3	
0 PLC ±0.2 1 PLC ±0.2 2 PLC ±0.2 3 PLC ±0.2 4 PLC ±0.2 ANGLES ±1°		APPLICATION SPEC -	-	CAGE CODE 00779	DRAWING NO C-1534686
MATERIAL SEE TABLE		WEIGHT -	-	RESTRICTED TO -	
FINISH SEE TABLE		CUSTOMER DRAWING		SCALE 10:1	SHEET 1 OF 2
				REV A2	

4

3

2

1

THIS DRAWING IS UNPUBLISHED.

RELEASED FOR PUBLICATION

© COPYRIGHT 2002

ALL RIGHTS RESERVED.

LOC

DIST

REVISIONS

A1

-

P

LTR

DESCRIPTION

DATE

DWN

APVD

-

SEE SHEET 1

-

-

-

DIRECTION OFF TOP OF REEL

Bemerkungen:

NOTES:

1 Geeignet fuer Kupferlackdraht
Einzel- $\varnothing 0.40 \dots 0.63\text{mm}$ oder Doppeldraht $\varnothing 0.45 \dots 0.56\text{mm}$
SLOT ACCEPTS:
SINGLE MAGNET WIRE $\varnothing 0.40 \dots 0.63\text{mm}$ DIA
OR DOUBLE MAGNET WIRE $\varnothing 0.40 \dots 0.56\text{mm}$ DIA

2 Anlieferungszustand: Kontakte fortlaufend mit
Papierzwiseilage auf Kunststoffspule aufgewickelt
Max. 5 Splice Stellen pro Spule
Splice Stellen nicht miteinander verbunden
DELIVERY STATE: CONTACTS CONTINUOUS REELED WITH
PAPER INTERLAYER ON PLASTIC-REEL.
MAX. 5 SPLICES PER REEL
SPLICES BE NOT BONDED TOGETHER.

3 Kontaktkammer nach Zeichnung } 411-18516
CAVITY ACCORDING DWG.

4 Kennziffer fuer Drahtgroessenbereich (12)
IDENTIFICATION NO. FOR MAGNET WIRE RANGE (12)

5 Materialdicke } 0.32 ± 0.02
STOCK THICKNESS

10	A	CuNiSi	Ag OVER Ni	1-1534686-8
10	A	CuNiSi	Au OVER Ni	1-1534686-7
10	A	CuNiSi	BLANK	1-1534686-2
10	A	CuSn	PRETINNED	1-1534686-1
9	B	CuNiSi	Ag OVER Ni	1534686-8
9	B	CuNiSi	Au OVER Ni	1534686-7
9	B	CuNiSi	BLANK	1534686-2
9	B	CuSn	PRETINNED	1534686-1
REELING	REV.	5 MATERIAL	SURFACE COLOR	TE PART NO

OBSOLETE

THIS DRAWING IS A CONTROLLED DOCUMENT.		DWN	08JAN2002		TE Connectivity				
		CHK	M. Neitzel						
		APVD	H. Ploesser		NAME MAG-MATE Kontakt mit Loetpin Baugroesse .300 mod.				
		PRODUCT SPEC							
		APPLICATION SPEC			SIZE	CAGE CODE	DRAWING NO	RESTRICTED TO	
		WEIGHT	-		A3	00779	©1534686	-	
CUSTOMER DRAWING		SCALE		10:1	SHEET		2 OF 2	REV	A2

DIMENSIONS:	TOLERANCES UNLESS OTHERWISE SPECIFIED:
mm	
	0 PLC ± 0.2
	1 PLC ± 0.2
	2 PLC ± 0.2
	3 PLC ± 0.2
	4 PLC ± 0.2
	ANGLES $\pm 1^\circ$

MATERIAL	FINISH
SEE TABLE	SEE TABLE

1470-19 (3/11)